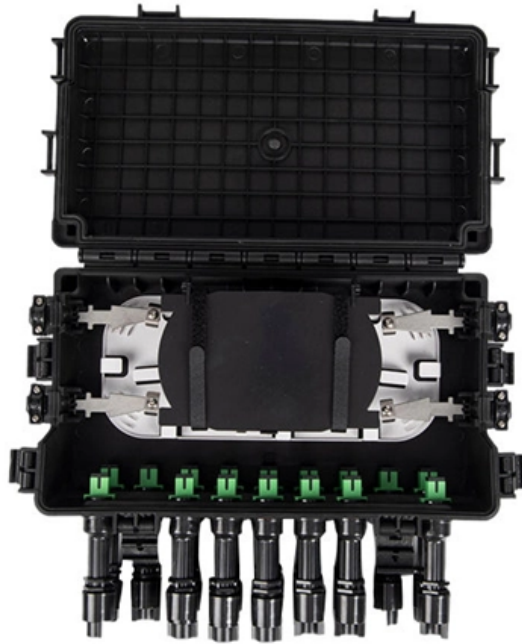


Switch Data Access Cable





Overview

It is a pre-terminated Twinax copper cable assembly with two pluggable connectors, connecting ports directly within active platforms such as networking switches, routers, servers, adapter cards, or data storage devices. As a networking engineer, I want to share my knowledge and help you understand the basics. They eliminate the need for separate optical transceivers and patch cords, offering plug-and-play simplicity, zero power consumption (passive models), and ultra-low latency for connections. Using swappable cooling fans and power supply modules with switches can help in enhancing redundancy. Compliance with Ethernet Protocols: Since the Ethernet networks are built over IEEE standards. But what exactly is a DAC, and why is it often the preferred solution over fiber optics?

This guide cuts through the jargon to explain DAC technology, its benefits.



Switch Data Access Cable



What You Need to Know About Direct Attach Cables (DAC)

Table of Contents In the high-speed world of data centers and enterprise networking, efficiently connecting switches, servers, and storage is

FS Community

Hier sollte eine Beschreibung angezeigt werden, diese Seite lässt dies jedoch nicht zu.



What type of cables to use between hubs, switches,

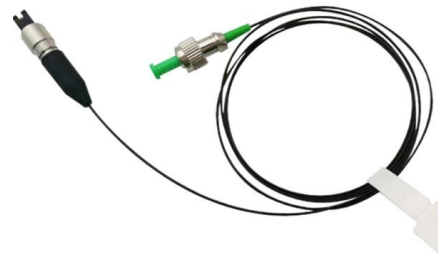
The type of cable table Back to the fundamentals. Here's a quick reference of what type of cable to use in what situation. Most modern networking

Unlocking Network Management: The Essential Guide to Switch

Unlocking Network Management: The Essential Guide to Switch Console Access Master the fundamental skill of connecting to network



switches via console cable for configuration,

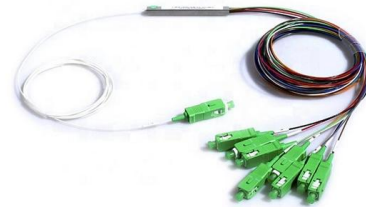


Review Catalyst Switch Cable, Connector, & AC Power Cord Guide

This document describes the care and use of Catalyst switch equipment including cables, connectors, power supplies, and cords.

Cat 8 Ethernet Cable Explained

You certainly can use Cat8 for gaming but it's really designed for high-speed switch to switch communication in a data center. Plus, the heavier gauge Cat8 cable is quite rigid, making it more



Connectors and Cables

Cable and Connectors This appendix describes the switch ports and the cables and adapters that you use to connect the switch to other devices.



Direct Attach Copper Cables , Copper Network Cables , Eaton

Eaton direct attach copper cables (DACs) connect network devices like switches, servers and storage devices in a data center and other applications that require data transmission in short distances and



Data Switch Boxes

Discover CableLeader's wide selection of data switch boxes, including DB9, DB25, and VGA manual switches. Easily switch between multiple computers and

The Fundamentals of Ethernet Cabling in an Enterprise

Through our studies, we learn about the devices that are part of an enterprise data network such as switches, routers, wireless access points, and also about



Common Types and Uses of Direct Attach Copper (DAC) Cables

Explore the types and uses of DAC cables for data centers, including passive, active, and high-performance options to enhance connectivity.



The Ultimate Guide to Understanding Access Control Cable Types

Understanding Access Control Systems and Their Cable Requirements Access control systems are sophisticated networks that integrate various devices, including card readers, electric strikes, and

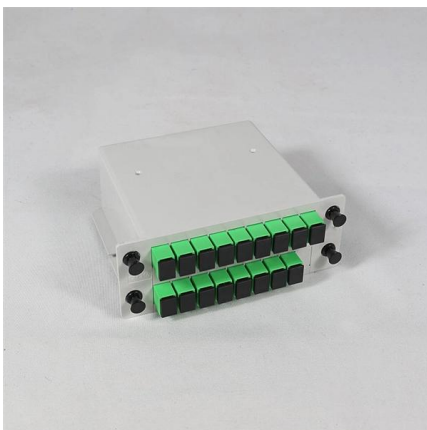


Direct Attach Copper (DAC) Twinax Cables: Passive vs

What is a DAC Cable? A Direct Attach Copper cable is a twinax copper cable with integrated connectors that plug directly into switch, router, or server

Direct Attach Cable (DAC) Overview: A Simple Guide

Direct Attach Cable (DAC) is a fixed-length, pre-terminated cable assembly with integrated transceiver modules at both ends. It is typically used to connect



What You Need to Know About Direct Attach Cables (DAC)

In the high-speed world of data centers and enterprise networking, efficiently connecting switches, servers, and storage is paramount. Enter the



Datacom Connectors and Product Applications

Samtec's high-performance board-to-board, board-to-cable, optical, and high frequency interconnects provide industry-leading performance for



Cisco Catalyst 9300 Series Switches Hardware

The supplied RJ-45-to-DB-9 adapter cable is used to connect the console port of the switch to a console PC. You need to provide a RJ-45-to-DB

How To Connect Switch To Ethernet , Robots

It receives data packets from one device and then forwards them to the appropriate destination device based on the unique media access control



GameChanger Cable , Datacom Solutions

Paige Datacom connects your security, fire, access control, audiovisual, signage, high voltage, irrigation, asset protection, and structured cabling systems with the



Why Datacenters Need Direct-Attached Copper Cables

Passive direct-attached copper cables are the go-to standard for server racks because of their low costs and latency and are a must for advanced

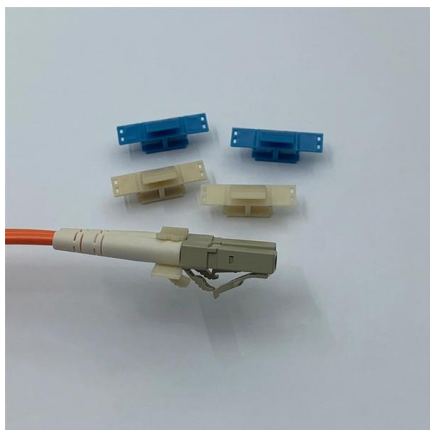
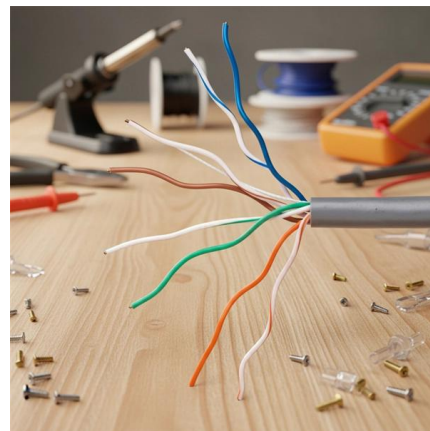


What Are Console Cables and Why You Need Them

Console cables explained. Learn what they are, uses, and why they're essential for network device management.

How to Connect to a Cisco Switch with Console Cable: Your First

How to connect to a Cisco switch with console cable transcends dusty textbook procedures. It remains the definitive, unbreakable handshake between you and the hardware--built directly into every Cisco



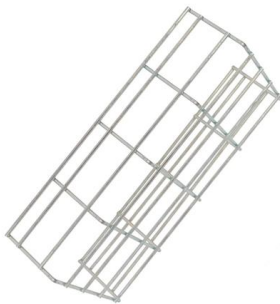
Core Switch vs. Distribution Switch vs. Access Switch

Comprehensive guide to Core, Distribution, and Access Switches. Roles in the network and important parameters explained.



Understanding Access Switches: Key Components of

Access switches are at the core of this infrastructure, representing the first interaction of end-user equipment with corporate networking features. This



How Do Ethernet Switches Work?

Packet switching allows the network to receive, forward and process that data before delivering it to the intended device. Networked devices communicate effortlessly when their

What Is a Direct Attach Copper (DAC) Cable?

Learn what DAC cables are, the difference between passive and active types, and why they're a cost-effective, low-latency networking solution.



What Is a Direct Attach Copper (DAC) Cable?

Summary : Direct Attach Copper (DAC) cables provide fast, reliable, and cost-effective short-distance connections for data centers, enterprise



Contact Us

For datasheets, pricing, or custom high-speed optical interconnect solutions, please visit:

<https://www.syropy.com.pl>