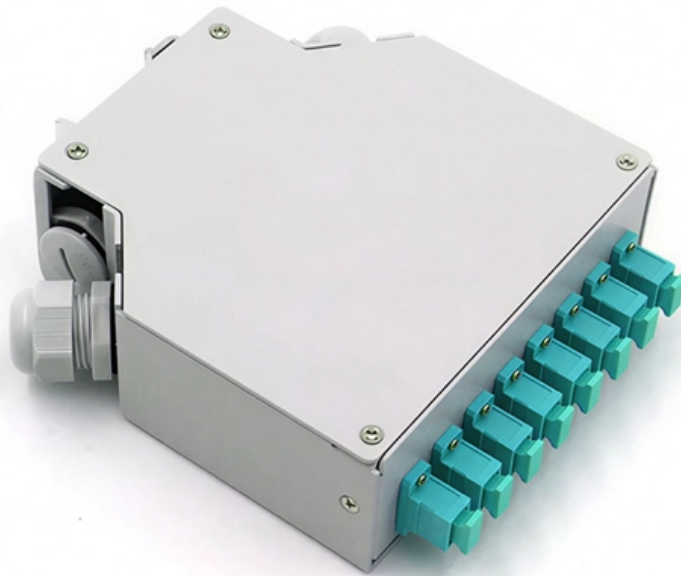


Swedish ladder-type cable tray specifications





Overview

Ladder cable tray is available in widths of 6, 9, 12, 18, 24, 30, 36, 42 and 48 inches with rung spacings of 6, 9, 12 or 18 inches. Note that wider rung spacings and wider cable tray widths decrease the overall strength of the cable tray. All fittings are available in sizes and types corresponding to the straight cable tray sections. We also offer smart wall sockets, switches, and dimmers from several major suppliers. Whether specifying a major new project, refurbishing existing facilities or doing the engineering, procurement and construction (EPC) for your end user, with T&B Cabletray, ABB offers reliable solutions designed conforming to ASTM A123 & ISO 1461 : m. Browse or download the cable tray catalog for more information on our full line of cable tray and ladder systems. SFSP produces a variety of products ranging from cable management systems; cable trays, cable ladders, basket trays, trunkings and support systems, to mechanical cladding fixations, steel lintels and block work accessories, plasterers' beads, expanded metal and block work reinforcement, strut. IEC 61537:2023 specifies requirements and tests for cable tray systems and cable ladder systems intended for the support and accommodation of cables and possibly other electrical equipment in electrical and/or communication systems installations.



Swedish ladder-type cable tray specifications



FRP Ladder Type Cable Tray - Full Form & Specifications

Learn the full form of FRP, ladder-type cable tray specifications, features, storage, and applications in industrial and power sectors.

PATNY Ladder Type Cable Trays (LTCT)

Patny Ladder type cable trays. Patny Systems designed cable trays to provide an efficient and economical method of cable management. Reach us today.

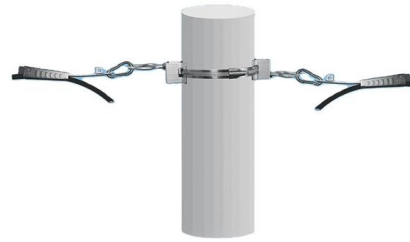


IEC 61537:2023

EXAMPLE a) cable tray length or cable ladder length, b) cable tray fitting or cable ladder fitting, c) coupler, d) support device, e) mounting device, f) system accessory.

CABLE TRAYS, CABLE LADDERS CABLE SUPPORT SYSTEMS& CABLE

In building electrical wiring, a strengthened type cable tray system is utilized to support insulated electrical wires used for power distribution, control, and communication. As an alternative to exposed



Ladder Type Cable Trays for Industries , Ajay Industrial

Ladder type cable tray is a versatile cable management solution that provides high load capacity and allows for easy access to cables. It features rungs that are



CABLE TRAY, CABLE LADDER, CABLE TRUNKING CATALOGUE

Cable Ladder. Straight sections of ladder type cable trays consist of two longitudinal side rails, connected by individual transverse, or rungs, which are welded to the side rails or bolted in case of GI



Top Cable Tray Manufacturer in Pune , Indmark Cable

Ladder-type cable trays are an essential components of modern electrical and data cable management systems. These versatile structures provide robust support





B-Line series Cable Tray Design Considerations

Our wind certification report provides you with list of acceptable B-Line series cable tray supports, fittings and covers based off of the environmental conditions, cable loading, and type of cable tray in your



Product Catalogue Cable Management Solutions

Straight sections and fittings provide the flexibility to allow cable ladder installations to follow cable runs which are either planned for new projects or already exist in buildings, as shown in the illustration right.

Cable Tray Technical Guide A practical guide to product selection and

SOLID-BOTTOM CABLE TRAY Providing additional cable protection, solid-bottom cable tray is sometimes preferred to support and protect numerous small instrumentation and control cables.



CABLE LAddEr TRAY

It is important to note that the Cable Ladder Tray will come under its greatest stress when cables are being pulled into the tray. Therefore, proper placement of supports is necessary to ensure that the



Cable management

IEC 61537:2023 specifies requirements and tests for cable tray systems and cable ladder systems intended for the support and accommodation of cables and possibly other electrical equipment in

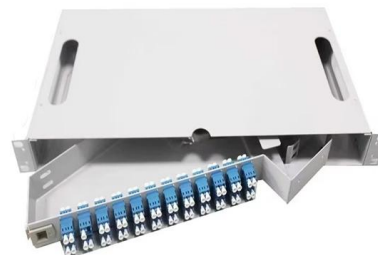


Enduro_Specification_Ladder Cable Tray_04-30-21

Straight section ladder tray shall be prefabricated structures made from fiberglass reinforced plastic, consisting of two longitudinal members (side rails) connected by transverse rungs, meeting all the

Cope Ladder Master Spec

Cable tray systems are defined to include, but are not limited to straight sections of [ladder type] [trough type] [solid bottom type] [channel type] cable trays, bends, tees, elbows, drop-outs, supports, and



Cable trays , Ahlsell - We make it easier to be professional

Hot-dip galvanized cable ladder with closed, hexagonal side profiles and flat, perforated rungs. The ladders are intended for installations in environments where high requirements are set for strength



Best Practice Guide to Cable Ladder and Cable Tray Systems

These guidelines will be particularly useful for the design, specification, procurement, installation and maintenance of these systems. Cable ladder systems and cable tray systems are designed for use



Monaco Distributors , Fibre Reinforced Plastic

Monaco Distributors , Fibre Reinforced Plastic

CABLE LADDER SYSTEM

Cable Ladder Specifications: A. CABLE TRAY DESIGN Cable Tray shall be made of straight sections, fittings and accessories as defined in the latest NEMA standards per NEMA VE-1. Standard cable



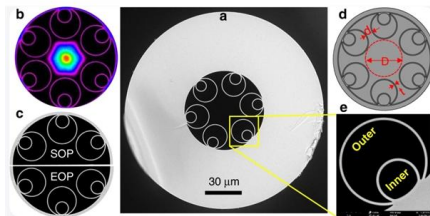
Resources for Cable tray and ladder systems

Our cable tray design considerations guide details key factors to consider when designing cable tray systems for industrial and commercial applications. Browse



CABLE TRAY SYSTEMS GUIDE

Steel Ladder System Hubbell's NEXTFRAME® Ladder Tray is the effective and widely used cable runway that supports and delivers bundles of cable between cabinets, racks, and closets, along

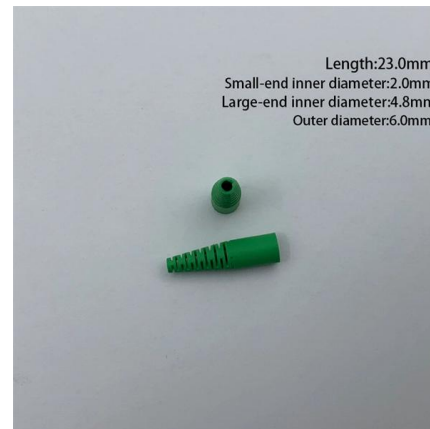


LEGRAND CABLE TRAYS TECHNICAL GUIDE

Not all cable trays are equivalent. The mechanical and electrical characteristics, tests, certifications, overall quality management, recommendations mentioned in this technical guide only apply to our

B-Line series Cable Tray Design Considerations

Is your cable tray system optimized for safety, dependability, space and cost savings? Cable tray (or cable ladder) systems are a popular alternative to electrical conduit systems, as they have an



Best practice guide to cable ladder and cable tray

Cable ladder and cable tray systems The following recommendations are intended to be a practical guide to ensure the safe and proper installation of

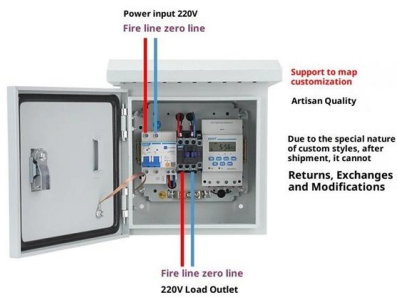


Cable management

Where necessary, cable tray systems and cable ladder systems can be used for the arrangement of cables into groups. This document does not apply to conduit systems, cable trunking systems and



Product Wiring Diagram



What is a Ladder Type Cable Tray? Features, Sizes

Explore everything about ladder cable trays - from their components to unique features, sizes, and comparison with other cable trays.

CABLE TRAY SYSTEMS GUIDE

The Ladder Tray features light, rugged, tubular steel construction. It is designed for mechanical support and strain relief in long runs of cable and creates a smooth gradual bend for cable. Rail and stringer



CABLE TRAY INSTITUTE

Question: We are using ladder type cable trays at many of our facilities for telecommunications wiring. Do you have any information available for



CABLE TRAY, CABLE LADDER, CABLE TRUNKING CATALOGUE

Rung spacing: 300mm. Material: Mild steel sheet / PO steel sheet. Constructed Type: MIG welding. er coating / Ho Horizontal Tee.



Electrical Cable Tray , Ladder Type Cable Tray

The load capacity of ladder type cable trays varies depending on factors such as tray size, material, and configuration. It is important to consult the manufacturer's

Contact Us

For datasheets, pricing, or custom high-speed optical interconnect solutions, please visit:
<https://www.syropy.com.pl>