

Supports are installed on the slanted side of the cable tray





Supports are installed on the slanted side of the cable tray



Precautions for Cable Tray Installation

Proper installation is not just about placing the cable tray in the right position; it also involves correct selection and layout, ensuring structural safety, maintaining

Cable tray

In the electrical wiring of buildings, a cable tray system is used to support insulated electrical cables used for power distribution, control, and communication. Cable



Best Practice Guide to Cable Ladder and Cable Tray Systems

Cable ladder systems and cable tray systems are designed for use as supports for cables and not as enclosures giving full mechanical protection. They are not intended to be used as ladders, walk ways



Best practice guide to cable ladder and cable tray

The following recommendations are intended to be a practical guide to ensure the safe and proper installation of cable ladder and cable tray systems



Explaining NEC Article 392 on Cable Trays

NEC Article 392 explains cable trays, their components, appropriate wiring methods for cable trays, and instances where they are and are not

CABLE TRAY SYSTEMS GUIDE

Hubbell's NEXTFRAME® Ladder Tray is the effective and widely used cable runway that supports and delivers bundles of cable between cabinets, racks, and closets, along walls, and suspended from



Guide to cable support systems

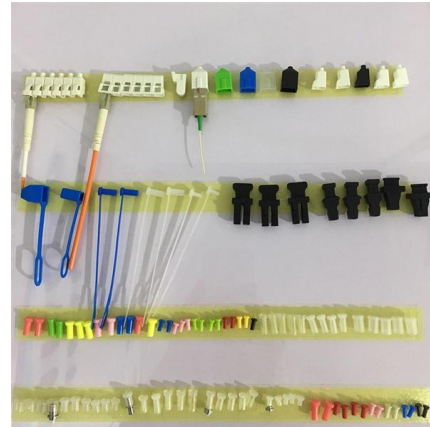
Universal systems for cable support structures are used for small loads. The systems are suspended from the ceiling with threaded rods, stand-off brackets allow raised floor mounting of cable trays,

Cable Tray Technical Guide A practical



guide to product selection and

A practical guide to product selection and installation This guide for engineers and installers has been developed by ABB as a practical reference regarding cable tray characteristics, installation, and

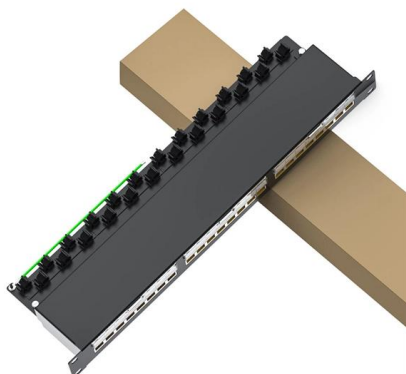


NEC: Cable Tray Tips , EC& M

Cable trays solve many design and installation problems, save money, and produce a neat, durable installation. For industrial establishments, strongly

Cable Tray Support Spacing: Key Guidelines Explained

Cable Trays Installation: Cable trays shall be secured to the structure of the building. The cable tray supports shall be designed to support the weight of



Cable Tray Systems

Cable trays offer continuous support of cables, are lightweight, quick and straight forward to install just about anywhere, and generally mean that changing cabling services over the lifetime of a project is



Mastering Cable Tray Installation , Step-by-Step Guide for a Seamless

Learn how to install cable trays correctly. Get the ultimate step-by-step guide on setting up a seamless and reliable cable management system.

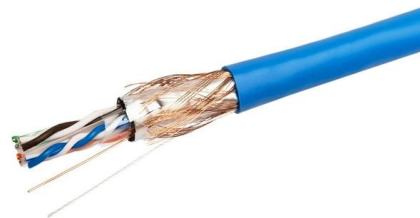


Best Practice Guide to Cable Ladder and Cable Tray

Cable ladder and cable tray systems The following recommendations are intended to be a practical guide to ensure the safe and proper installation of

B-Line series Cable Tray Design Considerations

Our wind certification report provides you with list of acceptable B-Line series cable tray supports, fittings and covers based off of the environmental conditions, cable loading, and type of cable tray in your



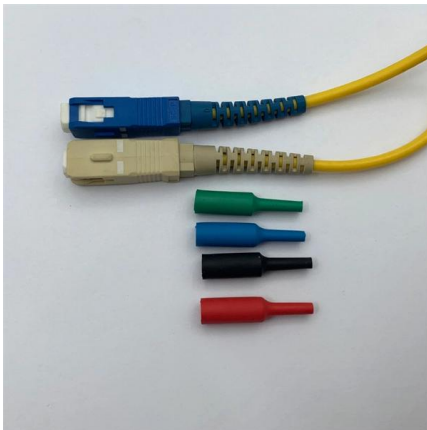
Beama Best Practice Guide , Installation Of The System , Cable

2.2 Structural characteristics When considering the installation of the cable supports system it is imperative to avoid the cutting or drilling of structural building members without the approval of the



Beama Best Practice Guide , Installation Of The System , Cable

The following recommendations are intended to be a practical guide to ensure the safe and proper installation of cable ladder and cable tray systems and channel support and other support systems.



Cable Tray Spacing Standards for Installation and Safety

Proper installation can significantly reduce electromagnetic interference, prevent fire hazards, and improve overall efficiency. This article

Cable Tray Technical Guide A practical guide to product selection and

In designing supports for a cable tray system, consideration should be given to the loads associated with future cable additions and any additional loading that may be applied to the cable tray system (e.g.,



Decoding Cable Tray Support Structures: Tips and Insights

Discover efficient cable tray support structures for optimal cable management. Learn about hanger, wall-mounted, and Unistrut systems for safer



Document DICOS

Performance of a cable tray wiring system depends on proper installation, including supports and cables. Neglecting installation and maintenance guidelines may lead to a personal injury as well as damage



B-Line series Cable Tray Design Considerations

Is your cable tray system optimized for safety, dependability, space and cost savings? Cable tray (or cable ladder) systems are a popular alternative to electrical conduit systems, as they have an



Best Practice Guide to Cable Ladder and Cable Tray Systems

This publication is intended as a practical guide for the proper and safe* installation of cable ladder systems, cable tray systems, channel support systems and associated supports.



A Guide to Installing and Supporting Electrical Cable Trays

This guide covers the critical steps, from selecting the right electrical cable tray and performing accurate cable fill calculations to managing a safe cable pull through





Cable Support System Requirements

Compared to other cable support systems, the Unipath system is modular, high-capacity, organized, easy to install, and cost-effective. As an open-air structured



Cable Tray Systems: A Complete Guide to Types

Cable Tray Supports: These include trapeze hangers, center-span supports, and wall brackets that anchor the entire system to the building structure

Contact Us

For datasheets, pricing, or custom high-speed optical interconnect solutions, please visit:
<https://www.syropy.com.pl>