

# **Supply of Gas Explosion-Proof Distribution Boxes**



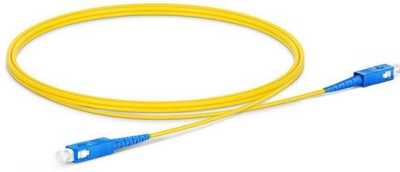


## Supply of Gas Explosion-Proof Distribution Boxes

---

### 5 Key Factors to Consider When Selecting Explosion Proof Distribution Boxes

Key Global Standards Explosion-proof distribution boxes must meet strict safety standards to protect people and property in hazardous environments. International standards help



### Explosion Proof Illumination Distribution Boxes (With

Flameproof and explosion proof, these power overhaul distribution boxes are suitable for use in hazardous areas. Specs: Ex mark: Ex de IIC T4 Gb DIP A21 TA,T4



### Explosion-Proof Distribution Boxes: Special Installation Requirements

These environments require electrical distribution boxes that don't just contain sparks but withstand massive internal explosions. Certification standards like ATEX, IECEx, and NEC Class I/II Division



### Explosion proof Power Distribution Panel Box

Power Distribution panel box - Hazardous locations for explosive gas mixtures: Zone 1 and Zone 2. Explosive gas mixtures: Class IIA, IIB, and IIC.



### **IP66 Explosion Proof Distribution Boxes for Hazardous Areas**

Chemical, oil and gas, mining, manufacturing, agricultural, pharmaceutical, and electrical industries widely use IP66 explosion-proof distribution boxes. All these industries require additional safety and



### **Explosion Proof Distribution Box & Electrical Enclosures**

Durable Hexlon Explosion Proof Distribution Boxes and Electrical Enclosures, IECEx and ATEX certified for Zone 1 and Zone 2.



### **Custom ATEX & Explosion-Proof Enclosures , Zone 1/2**

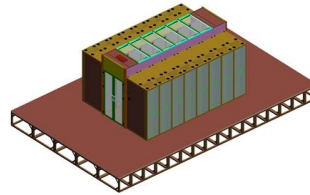
Weimiao provides project-based ATEX & IECEx explosion-proof enclosures for hazardous areas. Custom enclosures for oil, gas, chemical, and mining projects





## Terminal Boxes Market Size, Share and Forecast 2035

Terminal Boxes Market analysis indicates the market was valued at USD 684 Million in 2025 and is anticipated to reach USD 1.14 Billion by 2035 with a CAGR of 5.2% over the forecast timeline.



## Ex-Proof & Flameproof Enclosures & Junction Box , Supermec

Supermec ATEX Junction Box & Enclosures are designed to satisfy most of our clients' requirements for CONTROL explosion-proof and flameproof enclosures.

## Control and Distribution Panels , Ex d , EJB Series

The enclosures are certified Ex d IIB+H2 and Ex tb as well as "explosion-proof". They are available in many sizes, a wide range of operating elements and



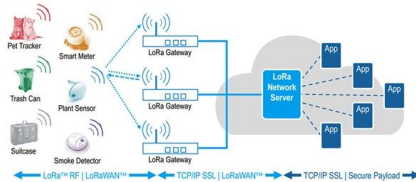
## Energy Distribution

BARTEC offers one of the most extensive ranges of explosion-proof and substance-resistant components, devices, and systems for controlling, switching, and



## Terminal boxes , Junction boxes , Ex , Ex e , Ex d , ATEX , Explosion

Terminal boxes for safe installation in hazardous areas Safely conduct, connect and distribute energy in hazardous areas with R. STAHL's terminal boxes. We offer bespoke, custom-made terminal boxes



## Explosion-Proof Distribution Box , Product Center

Explosion-proof distribution boxes are designed to safely control and distribute electrical power in hazardous environments, preventing ignition risks.



## Product Photography



## Terminal and Junction Boxes (Ex d) , Explosion Protection

Constructed from corrosion-resistant, copper-free aluminum, the GUB series terminal boxes and junction boxes are available in a variety of sizes and configurations to suit different installation needs.



## Explosion-Proof Distribution Box for Natural Gas Station

Our main products include explosion-proof boxes, explosion-proof air conditioners, explosion-proof lights and other series of explosion-proof electrical equipment.



## CE92 Explosion-proof power distribution boxes

CE92 Explosion-proof power distribution boxes  
Category: Atex Junction Boxes

## Explosion Proof Plug and Socket, Junction Box Price,

Explosion proof junction boxes are mandatory installation for power distribution in areas with presence of potentially flammable gases or combustible dusts.



## Custom CZ1290 Explosion-proof distribution boxes

About CZ CZ Electric Co., Ltd was established in 1990, is a CZ1290 Explosion-proof distribution boxes ( socket with transformer ) suppliers, and is headquartered in



## Ex Local Control Stations & Distribution Boxes

Atex control stations, explosion protected control units and distribution boxes made stainless steel maritime grade AISI 316L or AISI 304L. Atex Delvalle provides a



## Explosion-Proof Distribution Boxes & Panels Manufacturer

The explosion-proof distribution box safely delivers power in hazardous zones (oil, gas, chemical plants) with rugged, spark-resistant casing--ATEX/IECEX, IP66 certified for reliable operation in explosive

## DISTRIBUTION BOARDS

These are available in a range of materials including Stainless Steel, GRP & Sheet Steel from IP42 (Indoor) to IP 66 (Outdoor) Applications.



## Custom CZ1290 Explosion-proof distribution boxes

CZ Electric Co., Ltd is a Custom CZ1290 Explosion-proof distribution boxes suppliers and company, Modular design Easy operations with windows Operating handles



## **6WAY EXPLOSION PROOF DISTRIBUTION BOXES,**

BESIDES THE PRESENT DESIGNATION FOR THE FULL PLASTIC EXPLOSION-PROOF MOBILE POWER BRANCH CONNECTION SOCKET BOX, IT ALSO



## **Contact Us**

---

For datasheets, pricing, or custom high-speed optical interconnect solutions, please visit:

<https://www.syropy.com.pl>