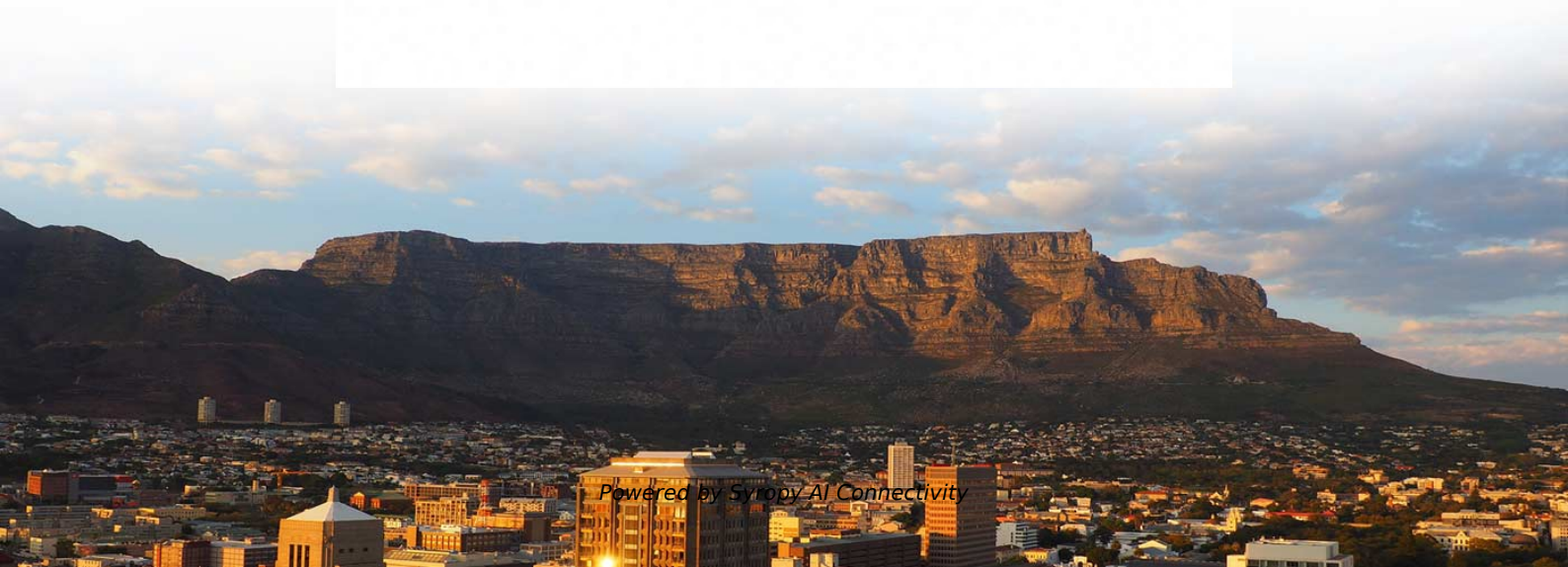


Sub configuration needs to be done on either the core switch or the aggregation switch





Sub configuration needs to be done on either the core switch or the



Aggregation Switch: Increasing the Priority of Special Traffic

Aggregation Switch: Increasing the Priority of Special Traffic Networking Requirements Core switches set up a CSS that functions as the core of the entire campus network to implement high network

Does lacp Link Aggregation require switch side configuration

Link Aggregation (Port-Channel, Ether-Channel) is a switch feature. It builds a logical link out of 1-8 physical ones. There are three types of link aggregation - unconditional, PAGP and LACP



Data Center Aggregation Layer Design and Configuration with

Introduction This chapter covers the design recommendations for a data center design deployment consisting of a Cisco Nexus® 7000 Series Switch at the aggregation layer and a Cisco Nexus 5000

Link Aggregation Configuration

S1720, S2700, S5700, and S6720 V200R011C10 Configuration Guide - Ethernet Switching This document describes the configuration of Ethernet services, including configuring link aggregation,

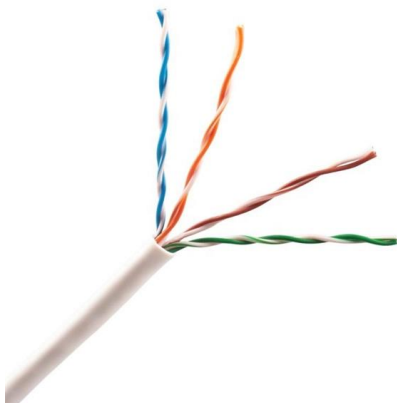


VLAN Aggregation Configuration

VLAN aggregation introduces the concept of sub-VLANs and super-VLANs. A sub-VLAN is an independent broadcast domain that contains only physical interfaces, whereas a super-VLAN

Aggregation Switch

The regular Aggregation switch is best used to connect all devices in a rack together when there is no need for an "even bigger pipe". So for SMBs or Prosumers that need a 10Gbps backbone but



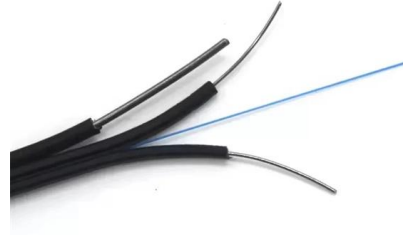
In-depth analysis: What is an aggregation switch?

In many network constructions, we have all heard of switches. So do you really understand switches? Why are aggregation switches often overlooked?



SMB Switch: Access Switch vs Aggregation Switch vs

The aggregation switch is used to aggregate the access switch. The core switch is used to aggregate the aggregation switch and is also responsible



How to configure LACP on our Smart/ Managed Switch

We want to aggregate port 10, 11, 12 of T3700G-28TQ and port 22, 23, 24 of T2600G-28TS via LACP protocol. Configuration Process Before

Multi-chassis Link Aggregation Group

Introduction MLAG (Multi-chassis Link Aggregation Group) implementation in RouterOS allows configuring LACP bonds on two separate devices, while the client device believes to be



Configuring LAG Settings on a Switch through the

This document explains how to configure LAG on a switch through the Command Line Interface (CLI). If you are unfamiliar with terms in this



What Is an Aggregation Switch and How to Choose?

An aggregation switch is a network device that consolidates traffic from multiple access switches, wireless access points, or other edge devices and



How To Set Up Switch Link Aggregation

Managed switches provide many advantages for a growing network, including support for VLANs, QoS, and Trunking. I touched on simple VLAN configuration a

Link Aggregation Configuration

This document provides campus networks typical configuration examples and feature typical configuration examples. "Campus Networks Typical Configuration Examples" provides typical



Link_Aggregation_Config_Guide

Switches do not exchange any port channel control information with other end devices in static link aggregation. Hence, users need to configure the port channel groups and member ports

What is an Aggregation Switch? , Features



and Practical Benefits

This article focuses on the question of what is an aggregation switch and how it works its uses and its implementation. Read till the end to learn this very important concept in network



What is an Aggregate Switch?

An aggregate switch consolidates traffic from access switches, while a core switch forms the backbone of the network, interconnecting multiple aggregate switches and providing access to

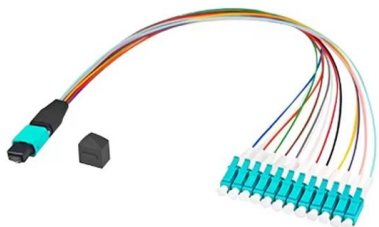
Example for Configuring Link Aggregation in Manual Mode When Switches

Switch A and Switch B can provide higher link bandwidth to implement inter-VLAN communication. Data transmission and link reliability need to be ensured. Figure 5-5 Networking for configuring link



Link Aggregation and Ethernet Bonding Feature Overview and

Introduction and overview This guide includes two sample configurations for Link Aggregation Control Protocol (LACP), or dynamic channel groups, as well as a sample configuration for a static channel



Configuring Aggregation and Access



Switches to Be Managed by the

Configure the core switch as the management subnet gateway of the aggregation and access switches. Configure the management VLAN auto-negotiation function with the core switch acting as the root



Configuration Guide for Cisco NCS 4000 Series

This chapter describes the procedures to configure Link Aggregation on Cisco NCS 4000 Series routers. Link Aggregation Overview Understanding Link Bundle Characteristics and

Unleash the Power of Ubiquiti Unifi Switch Aggregation

Upgrade your network with Ubiquiti Unifi Switch Aggregation 8-port 10G SFP+ with fanless design for seamless, high-speed connectivity. Discover



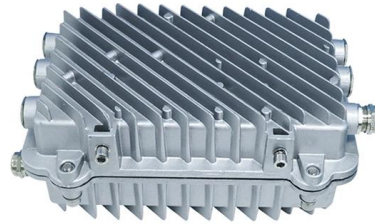
Chapter18:Link Aggregation Configuration

Port aggregation supports the following operation modes and functions: Static aggregation control After the settings of physical ports are bound to a logical port, you need not worry



What is an Aggregate Switch?

What is the difference between an aggregate switch and a core switch? An aggregate switch consolidates traffic from access switches, while a core switch forms the backbone of the



Ordering information

NO.	1	2	3	4
Model	PS80	PS80	PS240	PS240
Product name	Patch Panel	Patch Panel	Patch Panel	Patch Panel
Illustration				
HSU	1	2	3	4
Maximum number of cores	96	192	288	384
Product size (including modules and accessories)	482.0*206.7*43.3mm	482.0*206.7*86.3mm	482.0*206.7*133.3mm	482.0*206.7*176.3mm
Standard color code	SAU9005	SAU9005	SAU9005	SAU9005

What Is an Aggregation Switch and How to Choose?

Unlike core switches, aggregation switches can be either Layer 2 or Layer 3 switches. When choosing a Layer 2 switch, the routing and management policies

Understand EtherChannel Load Balance and

This document presents the concept of load balancing and redundancy on Cisco Catalyst switches with the use of the EtherChannel. This



Extreme Networks 7520 Switch: Enterprise Core

Extreme 7520 series delivers high-performance core and aggregation switching for enterprise data centers. View specs, port configurations, and



LAN Aggregation

Most configuration tasks can be done on the EtherChannel interface instead of on each individual port, ensuring configuration consistency throughout the links. EtherChannel relies on existing switch ports.



What is Switch Aggregation, Its Role and Selection Advice

This article wraps up "what is switch aggregation" and suggestions for choosing an aggregation switch. By considering these factors, network administrators can make informed

PA-Aggregate-Group-Configuration-Dual-Uplink-Core-Switch

From switch side also, you need to create port aggregation/channel of the interfaces that are going to be terminated on the firewall. So on both end devices (switch and Palo Alto), you will



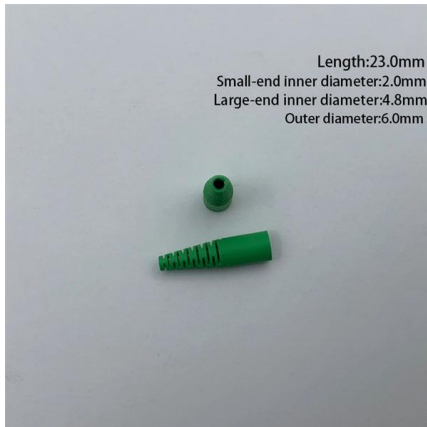
Aggregated Ethernet Interfaces Overview

You can configure LAGs to connect a QFX Series product or an EX4600 switch to other switches, like aggregation switches, servers, or routers. This example describes how to configure LAGs to connect



What is Switch Aggregation, Its Role and Selection Advice

When a Layer 2 switch is used as the aggregation switch, routing and management policies are determined by the core switch rather than the aggregation switch. This article wraps up



Configuring Link Aggregation Group (LAG) on a Switch

Article ID:2860 Configuring Link Aggregation Group (LAG) on a Switch Objective Link Aggregation Group (LAG) multiply the bandwidth, increase port flexibility, and provide link

Understanding Switch Aggregation: A Comprehensive

QSFPTek: How to Choose the Best Aggregation Switch?: This source provides a comprehensive guide on choosing the best aggregation switch,



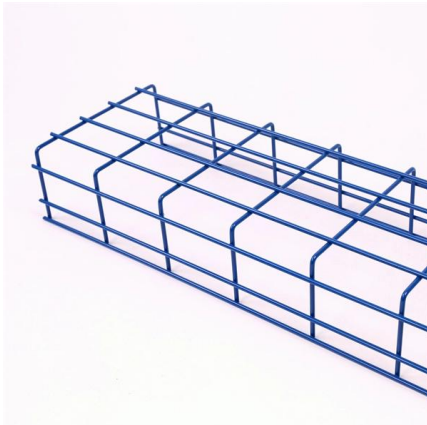
Aggregation Switch

An Aggregation or "Top-of-Rack" switch is designed to connect everything in a rack at high speeds, then have an even bigger pipe out to the rest of the network.



Aggregation Switch

In Chapter 4, we described several types of data center networking equipment including virtual switches, top of rack switches, end of row switches, fabric extenders, aggregation switches, and core switches,



Tutorial

Learn how to configure a Cisco Switch Link Aggregation using the command-line, by following this simple step-by-step tutorial, you will be able to

Everything You Need to Know About Aggregation Switch

A: Ubiquiti UniFi is a brand of networking equipment, including aggregation switches, that offers high-performance and easy-to-manage solutions



Contact Us

For datasheets, pricing, or custom high-speed optical interconnect solutions, please visit:
<https://www.syropy.com.pl>