

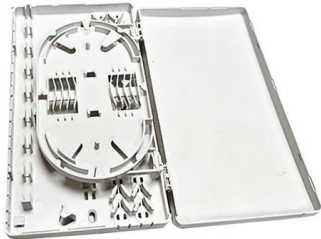
# **Standards for Selecting Angle Steel for Cable Tray Supports**





## Standards for Selecting Angle Steel for Cable Tray Supports

---



### Criteria for Sizing, Designing, Installing and Supporting of Cable-Tray

9.7 Cable-Tray Support: Cable trays shall be fastened to support steel by using guides that allow for longitudinal movement. 9.7.1 Whenever possible, supports and hangers shall be designed to permit

### Vogtle Electric Generating Plant (VEGP) Units 3 and 4 Updated

3F.3.3 Allowable Stresses basic stress allowables for the cable trays are based on the American Iron and Steel Institute specification. The basic stress allowables for cable tray supports utilizing light



### cable tray system

A cable tray system is an assembly of metallic cable tray sections and accessories, that forms a rigid structural system to support cables.

### CABLE TRAY SYSTEMS GUIDE

With a support span of 20' and a total working load of 80 lbs/ft, a NEMA Class 20B tray rated at 75 lbs/ft will not be adequate. A NEMA Class 20C tray, rated at 100 lbs/ft, will be required.



### Cable Tray

Of course, the exact specifications and definitions of DIN 4102 Part 12 of November 1998, such as rail height, tray widths, hole proportion, material thickness, max.



### Engineers guide to structural steel savings with B-Line series cable

This brochure provides an overview of Eaton's recommendations for structural steel supports when utilizing Eaton's B-Line series cable ladder, fittings and splice plates. For additional information, and



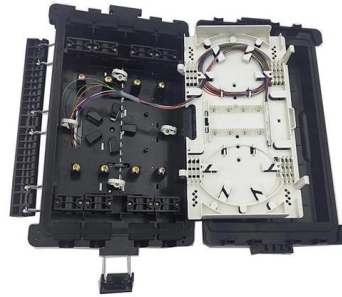
### Best Practice Guide to Cable Ladder and Cable Tray Systems

Introduction This publication is intended as a practical guide for the proper and safe\* installation of cable ladder systems, cable tray systems, channel support systems and associated supports.



## Guide to cable support systems

This chapter deals with the correct dimensioning and the final selection of a cable support system, depending on the application, according to various influencing factors, such as cable volume, cable



Ordering information

NO.	1	2	3	4
Model	P4001	P4002	P4003	P4004
Product name	Patch Panel	Patch Panel	Patch Panel	Patch Panel
Illustration				
Height	1	2	3	4
Maximum number of cores	96	192	288	384
Product size (including modules and accessories)	482.0*206.7*43.3mm	482.0*206.7*86.6mm	482.0*206.7*130.0mm	482.0*206.7*173.3mm
Standard color code	RAL9005	RAL9005	RAL9005	RAL9005

## Ultimate Guide to Cable Tray Selection - Types,

Learn how to choose the best cable tray system for your needs. Explore types, materials, installation tips, and NEC compliance in this expert guide.

## Cable Tray Structural Design Guide

The document discusses different beam configurations that can be found in cable tray installations, including simple beams, continuous beams, cantilever beams,



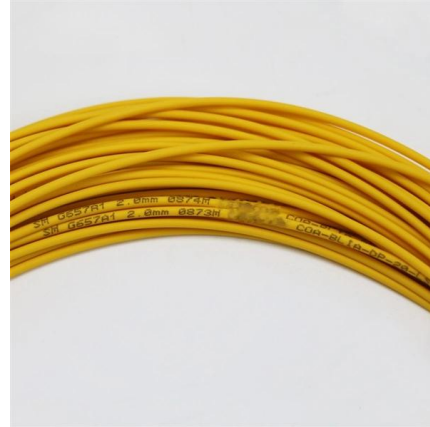
## Best Practice Guide to Cable Ladder and Cable Tray Systems

This guide covers cable ladder systems, cable tray systems, channel support systems and associated supports intended for the support and accommodation of cables and possibly other electrical



## Cable Tray Installation Specifications , PDF , Sheet

This document provides installation guidelines for cable trays, including: 1) Cable trays come in perforated and ladder types, with perforated trays made of steel

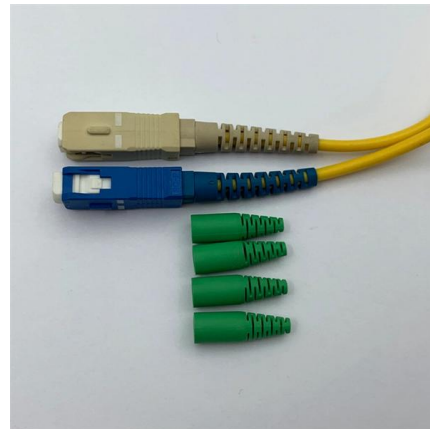


## Cable Tray Technical Guide A practical guide to product selection and

A practical guide to product selection and installation This guide for engineers and installers has been developed by ABB as a practical reference regarding cable tray characteristics, installation, and

## Full cable tray systems specification document

B. Cable tray systems are defined to include, but are not limited to straight sections of [ladder type] [trough type] [solid bottom type] [channel type] cable trays, bends, tees, elbows, drop-outs, supports



## Best Practice Guide to Cable Ladder and Cable Tray Systems

Introduction This publication is intended as a practical guide for the proper and safe\* installation of cable ladder systems, cable tray systems, channel support systems and associated



## TECHNICAL GUIDE

Mechanical resistance First and foremost, a cable tray must act as an effective, resistant and durable support for cables. The mechanical performance of all products and accessories is tested against the



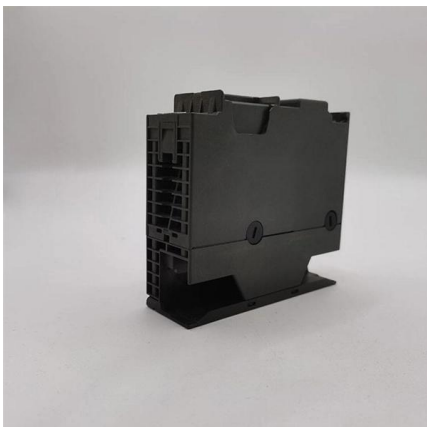
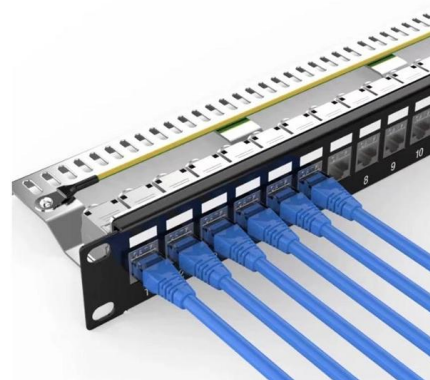
### Cable Tray

Cable Tray Cable trays are mechanical support systems that provide a rigid structural system for electrical cables, raceways, and insulated conductors used



### B-Line series Cable Tray Design Considerations

As an industry leader in cable tray, Eaton offers one of the widest ranges of cable management solutions available in the market today with its B-Line series portfolio. With unmatched quality and service, we



### Best practice guide to cable ladder and cable tray

Cable ladder and cable tray systems The following recommendations are intended to be a practical guide to ensure the safe and proper installation of

### Beama Best Practice Guide , Installation Of



## The System , Cable

The following recommendations are intended to be a practical guide to ensure the safe and proper installation of cable ladder and cable tray systems and channel support and other support systems.



### Cable Ladder Master Spec

Cable Tray Supports - Shall be placed so that the support spans do not exceed maximum span indicated on drawings. Supports shall be constructed from 12 gauge steel formed shape channel

### CABLE TRAY

**WARNING!**--Do not use a cable tray as a walkway, ladder, or support for people; cable tray is a mechanical support system for cables and raceways. Using cable trays as walkways can cause



### Cable Management Support Systems

Cable Support Systems are well designed to provide necessary support for cable trays, cable ladders and trunkings. Cable supports are manufactured according to





## Technical Specification for Cable tray installation and cable laying work

1. Scope :- This specification covers the following major activities; - Fabrication and installation of Mild Steel (MS) support structure for Galvanized Iron (GI) Cable tray. - Installation of perforated GI Cable

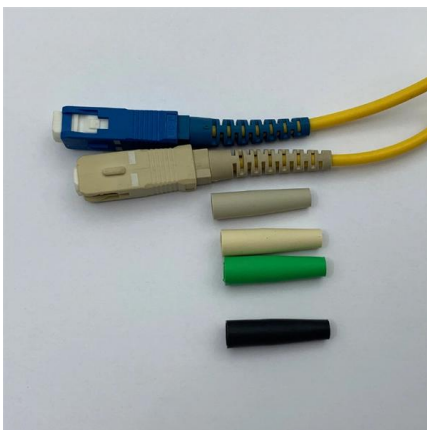


### Cable Tray Technical Guide A practical guide to product selection and

Cable tray length is selected based on the load to be supported, the distance between the supports (also referred to as the span), and handling and installation constraints.

### GUIDE CABLE TRAYS TECHNICAL

Specifies requirements for metal cable trays and associated fittings designed for use in accordance with the rules of Canadian Electrical Code, Part I and the National Electrical Code®



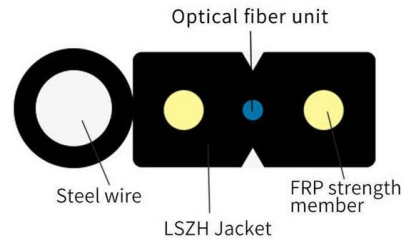
### Cable Tray Systems: Requirements and Best Practices

Comprehensive guide to cable tray systems requirements: tray types, materials, loading, supports, bonding, routing, and best practices for safe electrical cable management.



## The Ultimate Guide to Selecting the Right Cable Tray for

Installation Plan: Plan the installation method and consider any additional accessories or supports required for the cable tray system. In Conclusion



## Contact Us

---

For datasheets, pricing, or custom high-speed optical interconnect solutions, please visit:  
<https://www.syropy.com.pl>