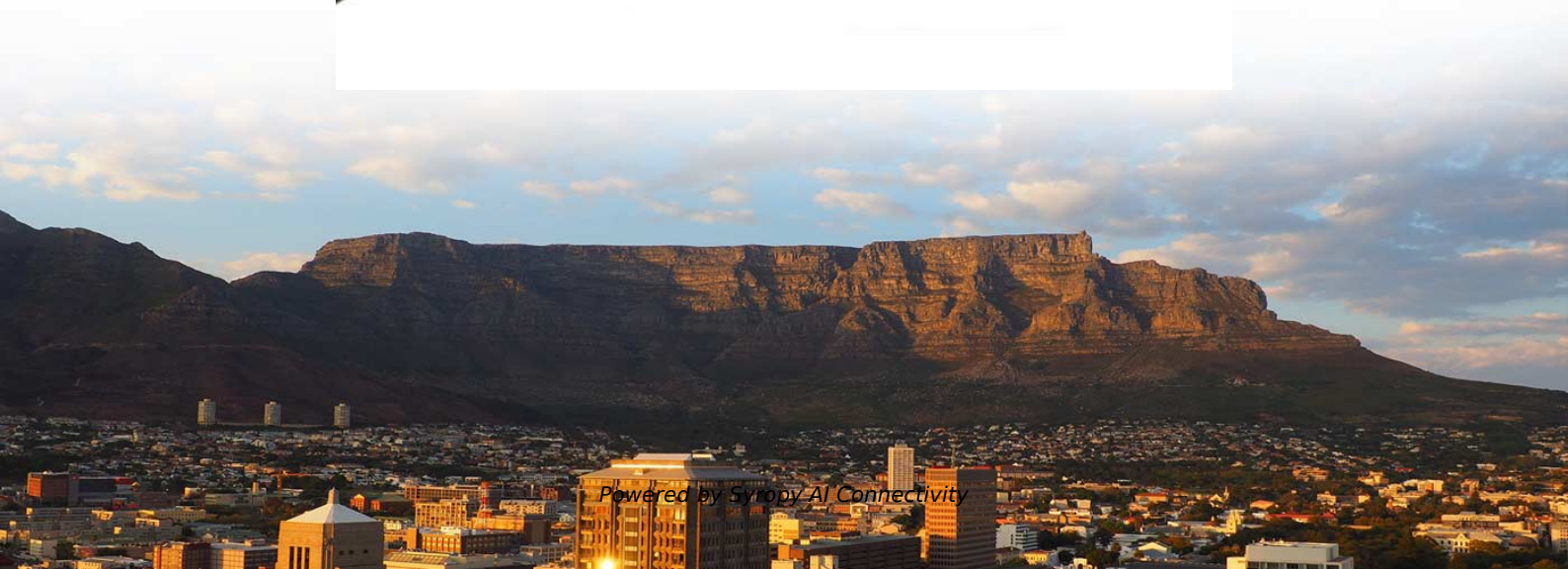


Standards for Finished Concrete Structures of Communication Towers





Standards for Finished Concrete Structures of Communication Towers



DRAFT TANZANIA STANDARD Steel towers for communication

For roof mount/rooftop masts and towers the base of the tower is mounted on concrete or steel frame (consists of I-beams or inverted I-beams) with the frame fixed on the rooftop existing concrete

DRAFT TANZANIA STANDARD Steel towers for communication

Steel towers for communication services -- Specification 0 Foreword wire supportive infrastructure to enable communication services be delivered. Network facilities including towers and masts are the



TOWERS AND MASTS

The Structural Standards for Steel Antenna Towers and Antenna Supporting Structures (ANSI/TIA 222-F-1996 was published in March 1996 by the TIA (Telecommunications Industry Association).

The construction process for pre-stressed ultra high performance

This study proposes the new design for construction of segmental tubular section communication tower with ultra-high-performance fibre concrete (UHPFC) material and prestress tendon to gain durability,



Manufacturing and Erection of

When erection of mechanical structure of telecommunication tower is finished then different telecom companies install the telecom unit along with the tower. For that they use a control room (processing

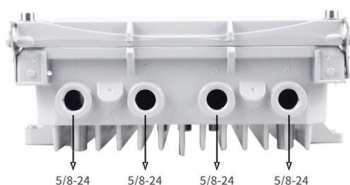
Telecom Tower Foundation Design Guide , PDF , Deep

This document discusses the design of a reinforced concrete foundation for a 100-foot telecommunications tower using spMats engineering software. A pier footing



Full-scale load testing for evaluating crack performance in precast

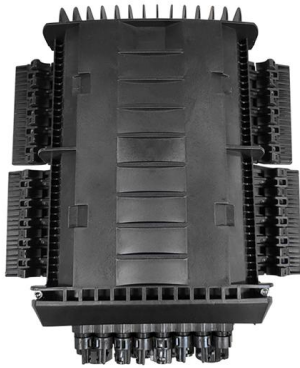
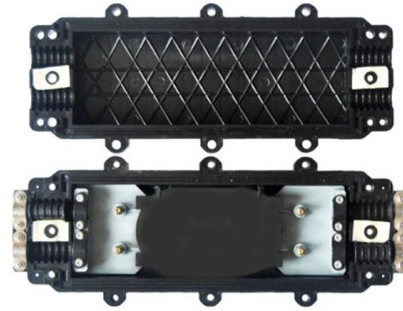
For examining the crack resistant performance of concrete tower structure with annular sections, the static loading tests were conducted on two full-scale prestressed precast concrete





Self-supporting Communication Tower Design

Design of the towers shall comply with British Standard (BS) 5950. These shall cover the following: Foundation reinforcement should comply with



Classification of Tower Structures per

The IBC specifically recognizes the TIA-222 Standard as the guideline for communication tower design and analysis and fundamentally accepts the TIA-222 structure classification as the basis required for

Telecommunication Tower Reinforced Concrete Foundation

For illustration and purposes, the following figures provide a sample of the input modules and results obtained from an spMats model created for the telecom tower reinforced concrete footing in this



Q& A: How the A10.48 Standard Can Help Improve

A10.48 subcommittee members Gordon Lyman and Don Doty share how the updated A10.48 standard can help keep workers safe on communication



Self-supporting Communication Tower Design

Self-supporting Communication Tower Foundation reinforcement should comply with British Standard (BS) 4449. The minimum



Microsoft Word

All communication facilities shall be in compliance with all Federal, State, and local building, electrical, and other relevant code requirements. No advertising message nor identification shall be affixed to

STRUCTURAL ANALYSIS AND DESIGN OF

In this thesis, a comprehensive structural analysis and design for a self-supported latticed telecommunication tower is being carried out using three different



Navigating the new ANSI Tower Standards: What you

Update on new standards for public safety radio communications towers and structures: ANSI/TIA 322; ANSI/ASSE A10.48 designed to stable



Recommended Best Practices for Communication Tower Design,

Co-locate communications equipment on existing communication towers or other structures (e.g., billboard, water and transmission tower, distribution pole, or building mounts).



(PDF) Design of telecommunication tower

This project focuses on the structural design and analysis of a 40-meter telecommunication tower, aimed at ensuring optimal performance and stability



Principles Of Concrete Telecom Towers Design

It includes a review of globally renowned telecom towers measuring 200 metres and above, with analyses of their architectural concepts, structural plans, and longitudinal sections.



INTERGRATED TELECOMMUNICATION TOWERS REINFORCED CONCRETE

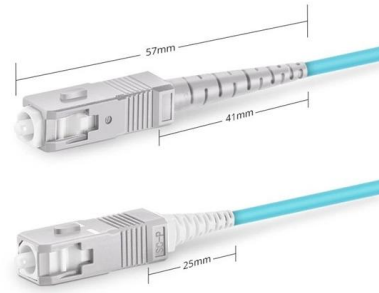
IN THIS TOPIC OF THE DISCUSSION, ONE ASPECT OF IMPORTANCE FOR INSTALLATION OF THE TELECOMMUNICATION TOWERS, ARE BUILT ON THE BASIS TO





Classification of Tower Structures per ANSI/TIA-222-G, IBC and ASCE 7

Structure Class II: Structures that due to height, use or location, represent a significant hazard to human life and/ or damage to property in the event of failure and/ or used for services that may be provided



Simplex SC UPC



(PDF) Structural performance optimization of Reinforced

Structural performance optimization of Reinforced concrete buildings with rooftop Telecommunication towers: A location-based analysis

Telecom tower Requirements_R2

Tower Mast Ø All towers shall be Monopole tree towers. Ø All towers shall meet the TIA-222 Structural standard. Ø Monopole towers should be self-supported and be fitted with climbing rungs/ladder. Ø



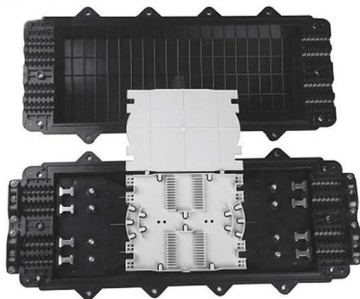
LBI-39185C, Specifications, Guidelines, and Practices, Tower

This specification establishes minimum standards for the design, fabrication and installation of latticed steel guyed and self-supporting towers including Portland Cement concrete foundations.



STANDARDS AND GUIDELINES FOR COMMUNICATION SITES

CSA Standard - Towers, Antennas and Antenna Supporting Structures Company submitting proposals or awarded contract Canadian Labor Code includes tower, antenna's, piers, guy lines and anchors,



(PDF) Performance of base connections for concrete

Demand for communication towers has increased in the last several years due to revolution in the networking domain. Recently, advancements in the

The construction process for pre-stressed ultra high

Towers are important structures for installing radio equipment to emit electromagnetic waves that allow radio, television and/or mobile communications



Contact Us

For datasheets, pricing, or custom high-speed optical interconnect solutions, please visit:
<https://www.syropy.com.pl>