

Standard requirements for resistance of construction site distribution boxes





Standard requirements for resistance of construction site distribution



Temporary electrical wiring for construction sites

work requires electrical power for many purposes. However, exposure to weather, frequent relocation, rough use and other conditions not normally encountered with conventional wiring systems

Key Points Of Installation And Collocation Of Distribution Box In

The power distribution system at the construction site shall be distributed in different levels. The main distribution box (or distribution room) shall be set up.



Installation requirements for distribution boxes

Installation of closed or explosion-proof electrical facilities; distribution box electrical components, meters, switches and lines should be arranged neatly, firmly installed, easy to operate.



5 Key Factors to Consider When Selecting Explosion Proof

Engineers select materials for explosion-proof distribution boxes based on durability and resistance to harsh conditions. Stainless steel and aluminum offer strong protection against corrosion.



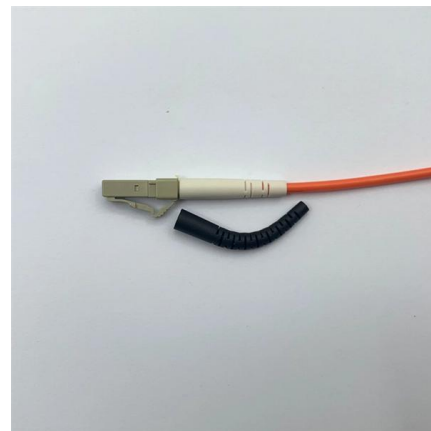
Requirements And Specifications For Installation Of

The installation of explosion-proof distribution boxes should follow specific explosion-proof grades and material requirements to ensure their safety



Outdoor Electrical Distribution Box Specifications: NEC

Complete specification guide for outdoor electrical distribution boxes covering NEC Article 312 requirements, NEMA ratings, sizing calculations, and



Technical Specifications For Corrosion Resistance Of

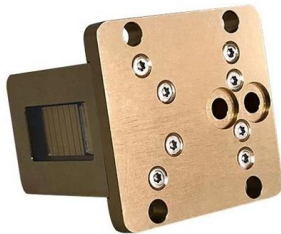
Engineering design requires the establishment of a corrosion rate prediction model as a basis for selection. The corrosion resistance rating of stainless electrical





Lex Products Introduces Terrapin Station Portable

Lex Products has introduced the PowerHOUSE(TM) Terrapin Station(TM), the first-ever portable power distribution box to meet stringent UL, NEC and



CONSTRUCTION SITES

The 68 Q-BOX ACS distribution boards stand out for their resistance to impact (IK10) and UV rays (in accordance with EN62208). They also come in pre-wired versions fitted with socket-outlets (with or

Design requirements and standards for low voltage

You need to understand the main standards and codes that guide the safe design and use of low voltage distribution boxes. These rules help you meet



The installation requirements for the distribution box

In this guide, we'll break down everything you need to know to install a distribution box correctly and confidently. Choose the right box based on

Detailed introduction of safety



Temporary power distribution boxes for flexible electrical installation. Robust solutions for construction sites, events and temporary energy infrastructure.

Waterproof and dustproof, reliable and safe

The outer classic sink design allows the sealing ring of the cabinet and door to be seamlessly compressed without leaving a trace of gaps



Key Material Requirements for Distribution Box

The key material requirements for distribution box are used in constructing an electrical distribution box play a crucial role in its durability,

Handbook PO-632

Construction Accessibility Guidelines Accessibility requirements and regulations, including those required to accommodate customers with disabilities, may vary by type of facility and governing



Requirements for distribution box at construction site

Rubber insulated cables shall be used for the incoming and outgoing lines, and the incoming and outgoing ports shall be set at the lower end face of the box body, with protective rings added.



1. An Ultimate Guide for Metal Distribution Boxes

Among the various types of distribution boxes, metal distribution boxes stand out due to their durability, fire resistance, and grounding capabilities. This article explores



Cautions and Requirements for Installation of

When the distribution box is installed and constructed, some safety operation items have become the primary premise of the work. Therefore, there are certain

Everything You Need to Know About Temporary Power

We pride ourselves on offering customizable, industry-leading products and unparalleled sales support. Our portable construction boxes have



Guardians of Safety: A Comprehensive Guide to

Stringent electrical codes and regulations govern the design and installation of electrical boxes. This commitment to compliance ensures that power distribution



Quality Control for Installation and Construction of Electrical Riser

Master the key quality control methods for electrical riser & distribution box installation. Ensure safety, compliance, and prevent hazards in building electrical systems.



Contact Us

For datasheets, pricing, or custom high-speed optical interconnect solutions, please visit:
<https://www.syropy.com.pl>