

Standard for Three-Level Electrical Distribution Boxes in Construction Sites





Standard for Three-Level Electrical Distribution Boxes in Construction



Essential Rules for 3-Level Electrical Distribution

The main distribution board should be located near the power source. Distribution boards should be placed in areas where electrical equipment or loads are

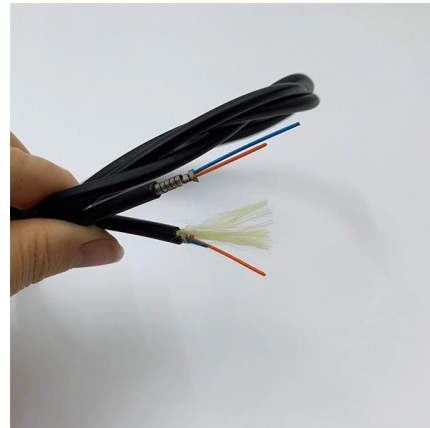


Three Phase Distribution Box Functions and

A three phase distribution box safely distributes and protects power for large equipment in factories, buildings, and high-demand commercial settings.

Installation requirements for distribution boxes

Distribution boxes shall be made of non-combustible materials; open distribution boards may be installed in production places and offices with low electric shock risk; enclosed cabinets shall



Electrical

Electrical hazards are addressed in specific standards for the construction industry. For additional information on general industry regulations, see the general industry regulations section. Visit the

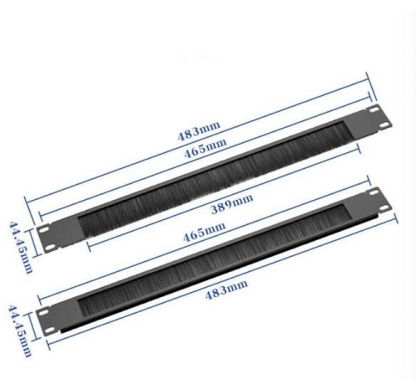
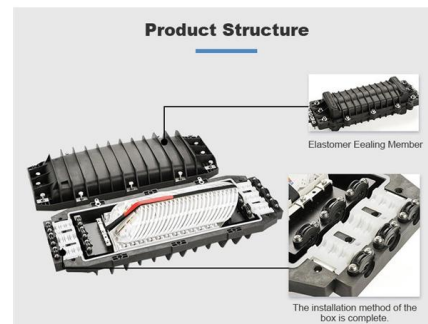


GTC Technical Guidelines

These guidelines provide you with information on the installation of electricity mains, services, streetlamps, and other parts of our electricity networks. The guidelines also cover the safety aspects

The Meaning and Function of Primary, Secondary, and Tertiary

Differences Between Primary, Secondary, and Tertiary Distribution Boxes
Primary Distribution Box: Designed for construction or large-scale projects as a main distribution point. Built to meet specific



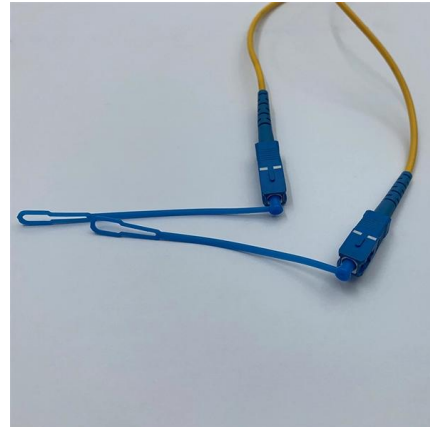
Microsoft Word

GENERAL Electrical installations must comply with the current electricity standards in the host country and canton (Switzerland and Geneva) and must comply with the applicable requirements, rules and



Construction of Transmission and Distribution Lines

1891 saw the construction of the first three-phase alternating current overhead line on the occasion of the International Electricity Exhibition in Frankfurt. Miller built a three phase current 200 hp



Atlantic International University

Hier sollte eine Beschreibung angezeigt werden, diese Seite lässt dies jedoch nicht zu.

Microsoft Word

It is intended to assist the field engineers and technicians to achieve uniform standard in construction to ensure a satisfactory and economical level of service without operation restrictions so that the



ENERGYBOX Assemblies for Construction Sites (ACS)

ENERGYBOX is a complete range of Assemblies for Construction Sites (ACS) pre-wired boards that can be wall-mounted or installed on a support.



Reuters , Breaking International News & Views

Find latest news from every corner of the globe at Reuters , your online source for breaking international news coverage.



Key Points Of Installation And Collocation Of Distribution Box In

The power distribution system at the construction site shall be distributed in different levels. The main distribution box (or distribution room) shall be set up.

Distribution materials specification- construction standard for

REV.



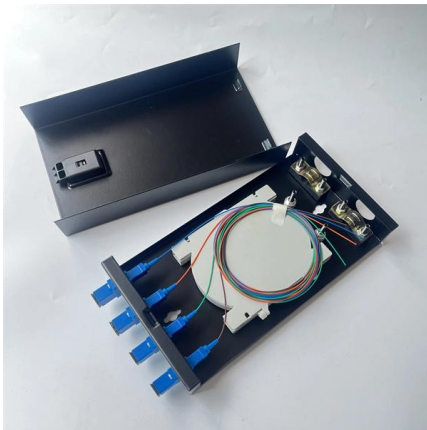
Electrical practices -- construction and demolition sites

The standard sets out minimum requirements for the design, construction and testing of electrical installations that supply electricity to appliances and equipment on



The Meaning and Function of Primary, Secondary, and Tertiary

Built to meet specific safety and operational standards for temporary construction sites. Incorporates a complete protection system (e.g., three-tier safety protection) and may include copper busbars for



What are the primary, secondary and tertiary distribution boxes?

Three level distribution box: a distribution box is set under the main distribution box, a switch box is set under the distribution box, and electrical equipment is set under the switch box to form a three-level

Requirements for distribution box at construction site

2? The rated value and action setting value of the main distribution box shall be compatible with the rated value and action setting value of the branch switch. 3? The electrical components and leakage



BS 4363:1998+A1:2013 Specification for distribution assemblies for

BS 4363:1998+A1:2013 This standard BS 4363:1998+A1:2013 Specification for distribution assemblies for reduced low voltage electricity supplies for construction and building sites



Distribution materials specification- construction standard for

Provides construction standards and specifications for materials used in underground distribution networks.

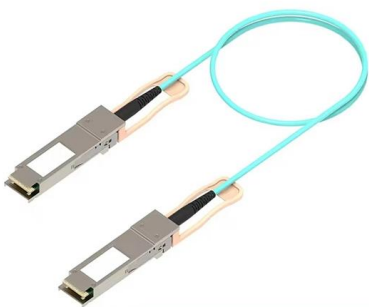


Construction site electrical enclosure

Find your construction site electrical enclosure easily amongst the 25 products from the leading brands (HLC, WALTHER WERKE, DIGITAL ELECTRIC,) on

Three-Tier Power Distribution System in a Newly Constructed

Implements strict safety standards, such as "one device, one circuit breaker, one RCD, one box," ensuring independent circuit protection for each device. May include fixed or portable boxes to



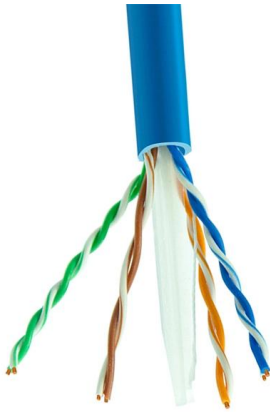
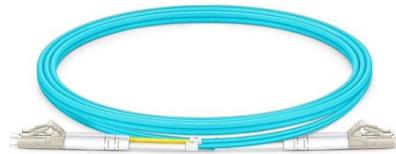
Summary of key points for construction and installation of distribution

The construction and installation points of distribution boxes and switch boxes are summarized as follows: 1. Select qualified products that meet national standards and safety requirements.



The difference between the first, second, and third levels of

The construction power distribution cabinet is designed specifically for the special situation of the construction site and complies with the relevant construction electricity specifications

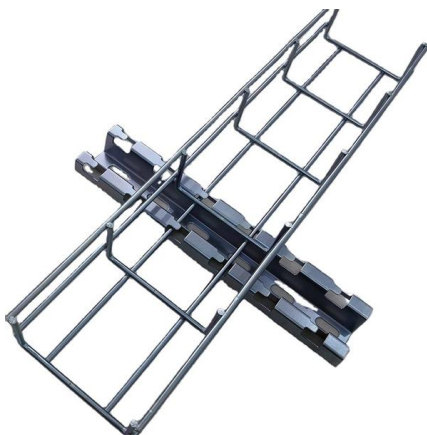


PDF Download BS 4363: Specification for distribution

Requirements for distribution assemblies for control and distribution of electricity from a three-phase reduced low voltage a.c. system at declared voltage up to 110 V (63.5 V to earth) or a single-phase

Requirements And Specifications For Installation Of

In flammable and explosive environments, explosion-proof distribution boxes should be selected and explosion-proof treatment should be carried out.



UNDERGROUND ELECTRIC DISTRIBUTION CONSTRUCTION STANDARDS

The Builder shall keep the premises, right-of-way and adjacent property free from accumulations of waste materials, rubbish and other debris resulting from the work, as well as all tools, construction



Detailed introduction of safety requirements for distribution box

The low-voltage power supply system at the construction site shall be equipped with a general distribution box, a distribution box and a switch box to implement three-level power distribution.



2 LV distribution networks

2 LV distribution networks - Electrical Installation Guide, Schneider Electric, 2008 Links are inserted in such a way that distributors form radial circuits from the substation with open-ended branches (see

Contact Us

For datasheets, pricing, or custom high-speed optical interconnect solutions, please visit:
<https://www.syropy.com.pl>