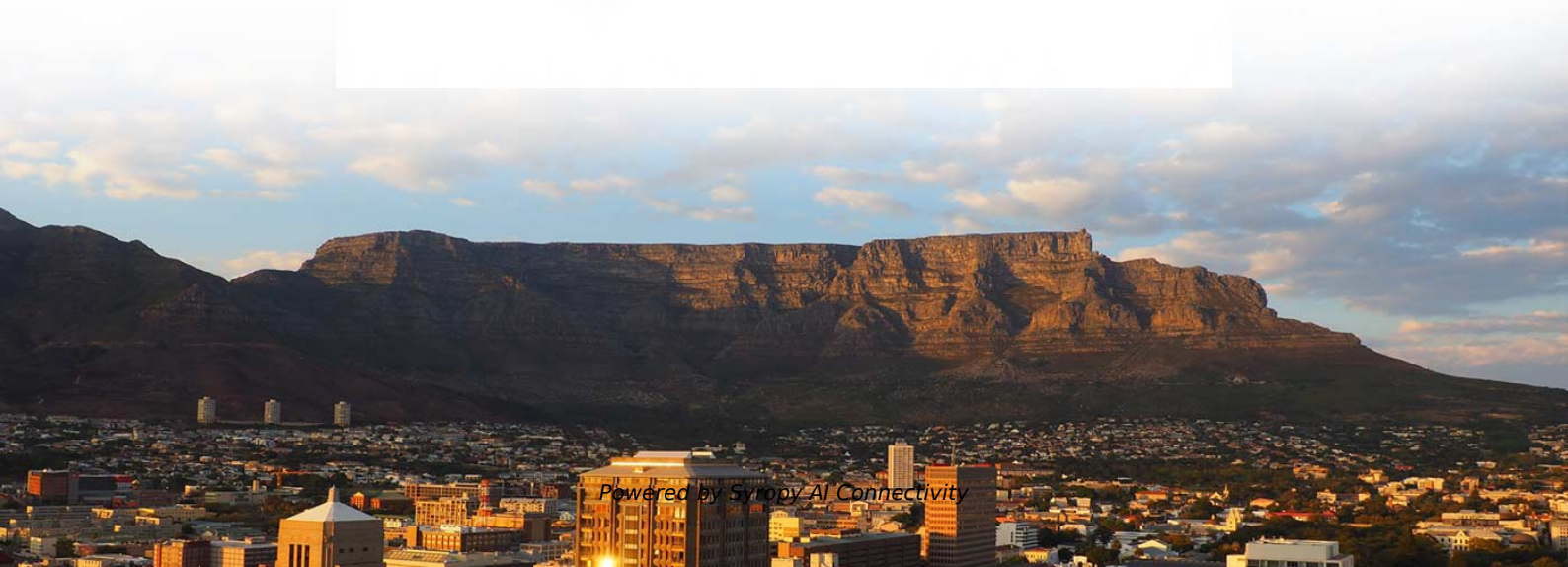


Standard connection method for cables entering the distribution box





Overview

Busbar connection is the most common electrical connection method in distribution boxes. It takes the incoming power and safely distributes it to different circuits throughout your building. Abstract: The design, installation, and protection of wire and cable systems in substations are covered in this guide, with the objective of minimizing cable failures and their consequences. The Low Voltage Directive refers to any electrical equipment designed for use at a rated voltage from 50 to 1000 V for alternating current and from 75 to 1500 V for direct current.



Standard connection method for cables entering the distribution bo



Size determination, installation method and wiring mode

The distribution box is the central hub of the home circuit and the general control of our daily power consumption. It is an indispensable electrical equipment. If there

Underground Residential Distribution Layouts

Distribution Layouts Distribution circuits to residential areas are similar to overhead designs, except the installation is underground. Primary mains, with take-offs, are installed to which are connected the



What are the electrical connection methods of industrial

Industrial distribution box is an indispensable equipment in industrial production. It is responsible for distributing electric energy to various electrical

What are the requirements for NM-cables entering an electric panel box?

NM-cables must be securely fastened where they enter an electric panel, so that tugging on a cable from outside the box will not pull wires loose from their terminations inside. This is usually



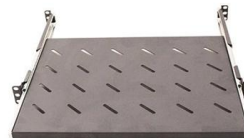
Install and connect electrical cables, conductors, wiring systems and

This standard is for people who install and connect electrical cables, conductors, wiring systems, equipment, accessories and components. The person carrying out this work must be able to comply



How To Wire A Distribution Board (DB Board): A Step-By-Step Guide

A distribution board (DB board), also known as a fuse box or breaker panel, is essential for managing electrical circuits in a building. It distributes electrical power from the main supply to



[Webit Cabling](#)

POWER CABLE INSTALLATION GUIDE

Southwire Company's Power Cable Installation Guide provides installation information for extruded dielectric power cable systems. This guide covers copper and aluminum conductors from No. 14





Wiring installation in a building

Install grommets in holes that cables are to be run through to protect cables from damage (some framing has grommets preinstalled). Use self-drilling screws to attach flush boxes, distribution boards and



How Does a Power Distribution Box Work

Learn how a power distribution box works step by step--from incoming power to circuit protection and smart monitoring--for safe, efficient electricity delivery.

Hager Guide to Commercial Installations (2), the cable

After introducing the Type B Distribution Boards and compliance with standards in the first part of the Hager Distribution Boards guide, in this article we're



Electrical installation handbook

To define the current carrying capacity of the conductor and therefore to identify the correct cross section for the load current, the standardized method of installation that better suits the actual



525-2016

Scope: This document is a guide for the design, installation, and protection of insulated wire and cable systems in substations with the objective of helping to minimize cable failures and

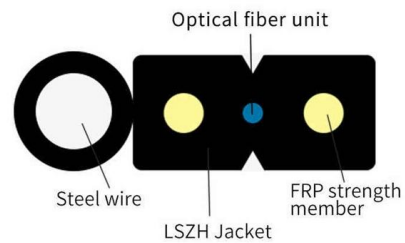


How to Wire a Home Distribution Box

Wiring Accessories for Single Phase Distribution Board Main Distribution Board or Fuse Boards (Consumer Unit) usually contains on the

Designing and Building an Electrical Panel Part 2:

What are the mounting methods? Fixed to a wall--This is a common approach for small electrical distribution boards. Fixed to a floor--This is useful



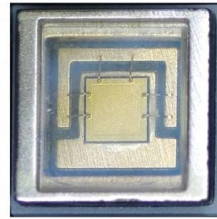
How To Connect A Distribution Box

Learn how to connect a distribution box with this easy-to-follow, step-by-step guide. From tools and materials needed to common installation mistakes and solutions, this comprehensive article will



What are the electrical connection methods of industrial

Busbar connection is the most common electrical connection method in distribution boxes. A busbar is a large-section conductive metal strip, usually



Correct Connection Method Of Grounding Wire Of

Open the distribution box and find the position marked with the grounding plate or PE letter. This position is the connection point of the grounding

Explaining NEC Article 230 on Service Entrance Conductors

Article 230 of NEC explains the installation of service conductors and equipment that bring electrical power from the utility supply to a building or structure.



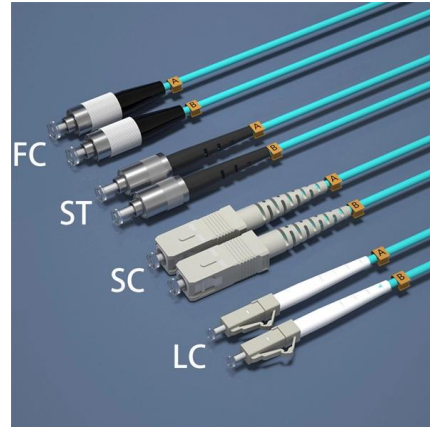
Hager Guide to Commercial Installations (2), the cable

Hager Commercial Distribution Boards - Cable entry Designers and installers must select a wiring system that avoids damage to the sheath and insulation of cable



Guides and handbooks

How to build our network: guides for developers
Our handbooks show you how to build fibre or copper infrastructure at your new residential or commercial development, and how to install Openreach



IEEE 525-2007_accepted

To link substations together, fiber-optic cable may be installed on transmission or distribution lines using OPGW or all-dielectric self-supporting (ADSS) cable (IEEE Std 1138TM-1994).

Understanding Circuit Breaker Wiring Configurations in

Herein lies an overview of standard wiring practices and the implications of using 1P versus 2P circuit breakers. Circuit Breaker Wiring



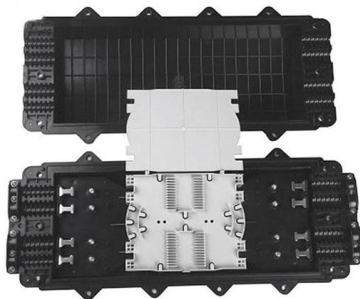
How to Wire a Home Distribution Box

In this video, we'll walk you through the process of wiring a home distribution box with a detailed connection diagram. Whether you're an electrician or a DIY



ITER Cabling Handbook

This set of rules describes the layout that applies for cable connections between devices and cubicles, between cubicles or between devices. All cables are routed within a suitable EMC protection (pipes,



Distribution Box Wiring Steps

?Wiring Direction?: Wiring between the main circuit breaker and each branch circuit breaker in the box generally goes on the left, and the wiring out of



Annex I

A 500 mm extra cable length could be stored as loops in cable trays (when possible) where the cable is connected (sensors, captors, etc.) or where the cable enters in electrical cabinets when location of



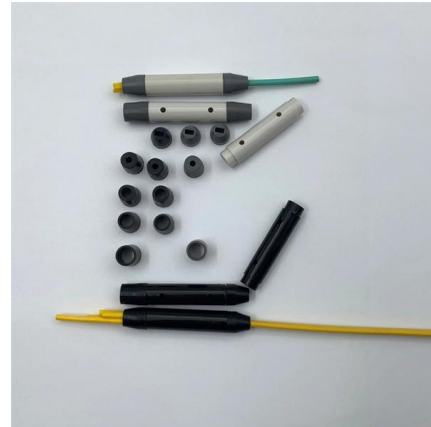
How to Wire 120/240V Main Panel

These three wires enter the meter box and then connect to the main panel. In the following tutorial, we will show how to wire 120V single-phase and 240V split



How to Install a Cable Distribution Box Safely and

Terminal connection: Connect the input and output lines to the terminals in the distribution box in accordance with the principle of "phase wire to



Contact Us

For datasheets, pricing, or custom high-speed optical interconnect solutions, please visit:

<https://www.syropy.com.pl>