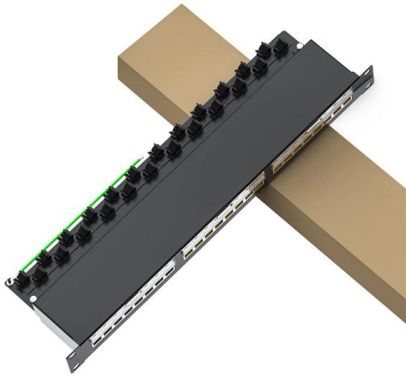


Standard Specifications and Dimensions of Cabinets and Cable Trays





Standard Specifications and Dimensions of Cabinets and Cable Tray



CABLE TRAY SYSTEMS GUIDE

Hubbell's NEXTFRAME® Ladder Tray is the effective and widely used cable runway that supports and delivers bundles of cable between cabinets, racks, and closets, along walls, and suspended from

Full cable tray systems specification document

B. Cable tray systems are defined to include, but are not limited to straight sections of [ladder type] [trough type] [solid bottom type] [channel type] cable trays, bends, tees, elbows, drop-outs, supports

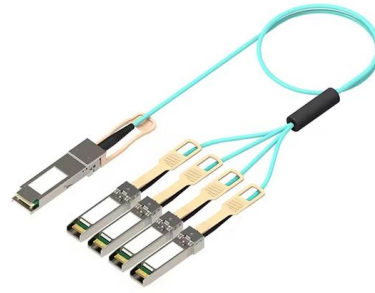


Types of Cable Trays - Advantages, Applications and Sizes

Explore the types of cable trays, their advantages, applications, and standard sizes. Learn how they improve cable management and support various industries.

26 05 36 Cable Trays for Electrical Systems

EATON B-LINE SERIES GUIDE SPECIFICATION
Section 26 05 36 - CABLE TRAYS FOR
ELECTRICAL SYSTEMS 26 05 364/2025 Specifier
Notes: This product guide specification is written



Cable Tray Size Chart and Selection Guide

When interfacing with existing cable trays, physically verify the in-place electrical cable tray dimensions rather than relying on original specifications, as manufacturing standards may have

Lenovo NVIDIA GB300 NVL72 Rack Scale AI Product

Standard specifications - GB300 Compute tray
Standard specifications - GB300 NVL Switch Tray
Models Configurations Spare Compute Trays
NVIDIA



Wire Mesh Cable Trays Technical Information Detailed,

Wire Mesh Cable Tray Detailed Information: a. A job site, field adaptable support system primarily for low voltage telecommunication and fiber optic cables. These



Cable Tray Size Choosing: Key Factors for Electrical

The size of the cable tray you choose can significantly impact the performance and safety of your electrical system. Key factors that influence cable



cable tray technical specifications

standards & specifications light & medium duty cable tray sizes All light duty tray and accessories do not have a return edge. Also light duty tray of widths 150mm and un-der do not require the use of

Cable Tray Technical Guide A practical guide to product selection and

Cable tray is considered to be a system. It must provide continuous support for cables, and the electrical continuity of the cable tray system must be maintained.



Unlocking the Secret: Exact Electrical Cable Tray Dimensions for

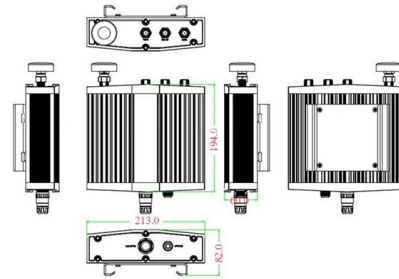
Discover essential electrical cable tray dimensions, including standard sizes, materials, and proper installation guidelines. Learn how to select the right cable tray for your project with this



Cable Tray Width, Dimensions and Specifications as per

Learn about cable tray width dimensions and specifications as per NEC standards. Understand types, sizes, materials, and installation guidelines for safe and

Mechanical drawing

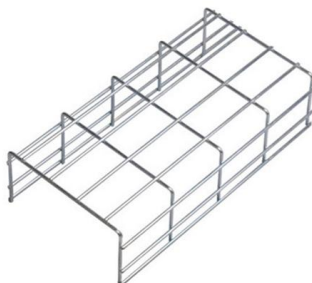


Cable Calculator

How to find the size of a cable? Cable size calculator to aid specification of cables to British Standard BS7671 and International standard IEC 60364-5-52. Use the cable calculator to add your installation

26 05 36 Cable Trays for Electrical Systems

Description: This product category covers metal cable trays and metal cable tray systems intended for field assembly and for use in accordance with Article 392 of NFPA 70.



Product Specifications: CABLE TRAY

AS/NZS 4680:2006 FDG CABLE TRAY FDG Cable Tray is designed to continuously support cable systems including; Power, Data, and Audio Visual. A quick and easy system to install without the



A Complete Guide to Cable Trays Sizes and Selection

Explore our complete guide to cable trays sizes. Learn how to calculate loads, select types, and navigate UK standards for a certified network installation.



CABLE TRAY

Cable Support Systems are well designed to provide necessary support for cable trays, cable ladders and trunkings. Cable supports are manufactured according to common standards from high quality

Cable Tray Size and Dimensions: How to Choose the

Learn how to calculate the perfect cable tray size and dimensions for your electrical project. This guide covers load capacity, fill ratios, and industry



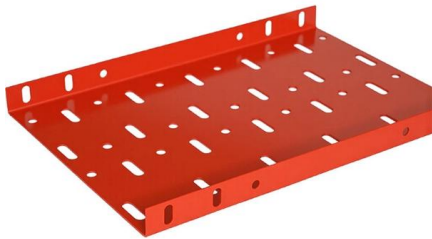
Cable Tray Technical Guide A practical guide to product selection and

A practical guide to product selection and installation This guide for engineers and installers has been developed by ABB as a practical reference regarding cable tray characteristics, installation, and



Cable Tray Size Guide: How to Choose the Right Dimensions

Selecting the right cable tray size is critical for electrical safety, system efficiency, and cost control. This comprehensive guide covers standard cable tray sizes, calculation methods, and practical selection



Cable Tray Dimensions Guide: Standard Sizes, Tray

Explore standard sizes by tray type, understand width and depth limits, and see how to calculate and choose compliant cable tray sizes for real projects.

SPECIFICATION 271100 COMMUNICATIONS CABINETS AND

All Cabinets/Rack are to have a 24 port standard RJ45 patch panel installed with 12 ports cabled back to the Horizontal cable cabinet on an approved patch panel (Designer to ensure enough



A Complete Guide to Cable Trays Sizes and Selection

To make selecting the right size easier, we've put together a quick reference table outlining the standard dimensions you'll find in the UK and where



13-SDMS-08 REV. 00 MATERIAL SPECIFICATION FOR

Scope This Distribution Material Specification describes the minimum technical requirements for design, engineering, construction, manufacture, inspection, testing and performance of racks and cabinets



Cable Tray Width, Dimensions and Specifications as per

Cable Tray Width, Dimensions and Specifications as per NEC Learn about cable tray width dimensions and specifications as per NEC standards. Understand types,



Contact Us

For datasheets, pricing, or custom high-speed optical interconnect solutions, please visit:
<https://www.syropy.com.pl>