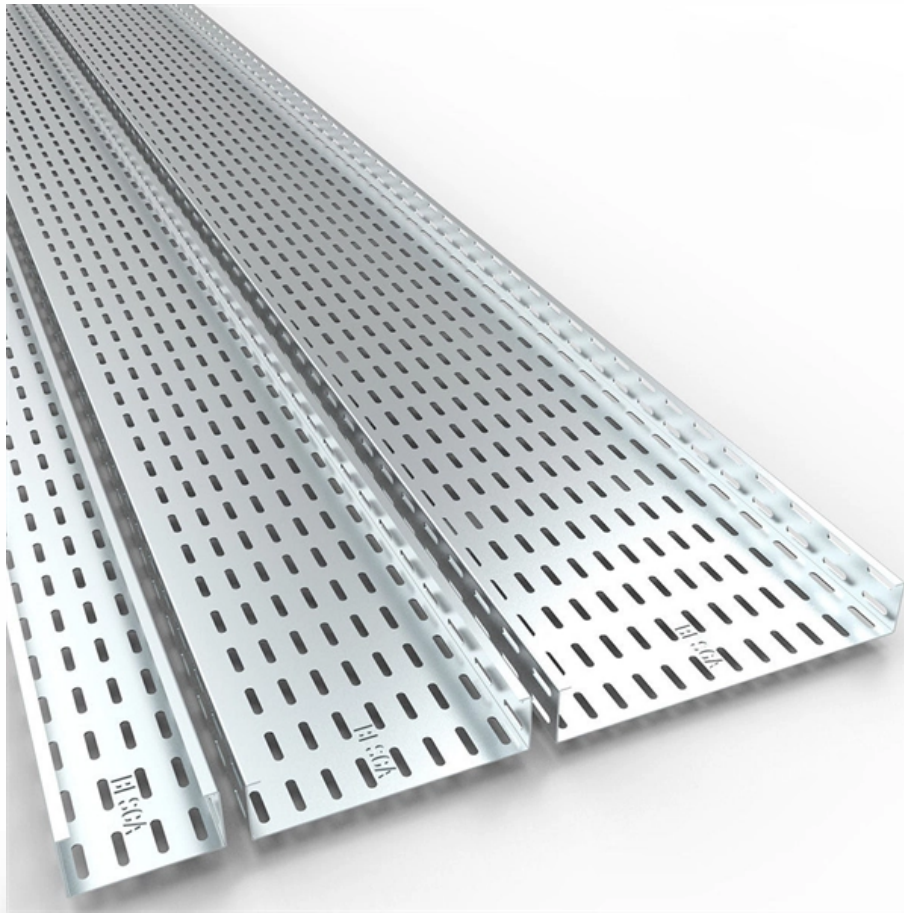



Standard Requirements for Installing Cable Trays in Network Equipment Rooms





Overview

Learn NEC Article 392 requirements for cable trays, including grounding, bonding, fill capacity, and compliant installation for power, control, Ethernet, and. Cable Tray Fill Capacity Rules The NEC sets clear limitations on cable tray fill to ensure safety, performance, and long-term reliability. The mechanical and electrical characteristics, tests, certifications, overall quality management, recommendations mentioned in this technical guide only apply to our own cable management ranges and cannot under any circumstances be transposed to si osure, overheating or. The Cable Tray ng standards, performance standards, test standards and application in this document have been tested extens ompetent professional en completely installed, without damage either to conductors or. These requirements ar Telecommunications Distribution Methods Manua  shall mean any enclosed channel for routing wire, cable or bu.



Standard Requirements for Installing Cable Trays in Network Equipment

Cable Tray Questions , Cable Tray Institute

A contractor has just installed a new phone system at my location and he utilized cable trays in the switch room. I did not see any deliberate attempt to ground the system. Our existing cable tray



Technical Guidelines for Cable Tray Installation and

Cable tray installation must comply with specific technical standards to ensure electrical safety, system reliability, and long-term maintainability. This document



GUIDE CABLE TRAYS TECHNICAL

In accordance with its continuous improvement policy, Legrand reserves the right to change the specifications and illustrations without notice. All illustrations, descriptions and technical information



Best Practices for Installing Cables in Trays

Learn the best practices for installing cables in trays. This guide covers essential steps, technical requirements, and key details



Best Practice Guide to Cable Ladder and Cable Tray Systems

This publication is intended as a practical guide for the proper and safe* installation of cable ladder systems, cable tray systems, channel support systems and associated supports.

Section 27 05 36 Cable Tray for Communications Systems

3.2.1 Cable trays shall be sized (including 10% growth) as per the drawings and will accommodate all horizontal and/or backbone cabling within the Telecommunications Room as well as entering/existing



Mastering Cable Tray Installation , Step-by-Step Guide for a Seamless

Conclusion Mastering cable tray installation is crucial for creating a safe, organised, and efficient cable management system. By following this step-by-step guide, you can ensure a seamless



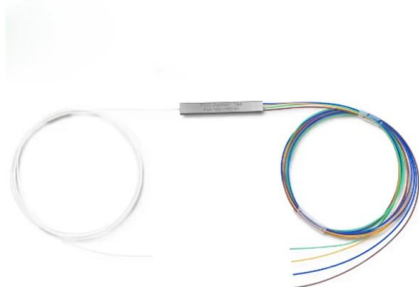
METHOD STATEMENT FOR CABLE TRAY INSTALLATION

7.1.7 Install necessary fabricated supports for cable tray as per installation detail. All permanent materials (including fabricated supports), consumables, construction area and resources shall be



Method Statement installation of Cable Trays and Ladders

This method statement covers the site installation of the cable tray & ladders and the requirements of checks to be carried out.



CABLE TRAY

Figure 4.50 Attachment of a channel cable tray in this method maintains the electrical requirements, bolted mechanical connection, and provides a practical method of dropping tray cables to equipment.



Compliance Requirements for Instrument Cable Trays

Installing instrument cable trays properly and in compliance with relevant standards is crucial to ensure safety, functionality, and durability. Below is a detailed guide



Cable Tray Technical Guide A practical guide to product selection and

This guide for engineers and installers has been developed by ABB as a practical reference regarding cable tray characteristics, installation, and requirements.



Best practices for underfloor cable management

Designing, selecting, installing, and grounding cable tray properly allows the equipment in the data center to function at its best. An important final step is to create ongoing cable management



Cable Tray Technical Guide A practical guide to product selection and

A practical guide to product selection and installation This guide for engineers and installers has been developed by ABB as a practical reference regarding cable tray characteristics, installation, and



Codes and Standards , Cable Tray Institute

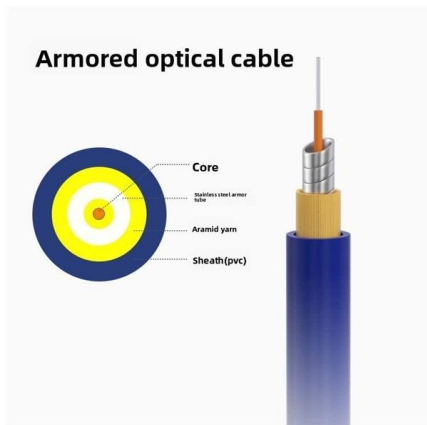
The Cable Tray Institute is making available the current edition of this practical guide for the proper installation of aluminum or steel cable tray systems. These guidelines will be useful to engineers,





SECTION 270528 -- CABLE TRAY FOR TELECOMMUNICATIONS

Hardware: Install removable hardware, including pulling eyes, cable stanchions, cable arms, and insulators, as required for installation and support of cables and conductors and as indicated.



GUIDE CABLE TRAYS TECHNICAL

Specifies requirements for metal cable trays and associated fittings designed for use in accordance with the rules of Canadian Electrical Code, Part I and the National Electrical Code®

NEC Standards for Cable Trays: Grounding, Fill Capacity & Installation

Our solutions emphasize mandatory grounding and bonding for metallic trays, firestop systems at penetrations, and mesh tray options that reduce installation time while maintaining



Efficient Cable Tray Installation Methods for Organized

Discover efficient methods for installing cable trays to organize power, data, and security cables. Explore wall, ceiling, and floor mounting options



Cable Pathways: A Data Center Design Guide and Best

A basket tray is a cable tray designed for light duty applications. The basket tray is lightweight and easy to install; however a certain level of



A Guide to Installing and Supporting Electrical Cable Trays

A professional guide to installing electrical cable tray systems per NEC Article 392. Covers support, securing cables, and fill calculations.

Cable Tray and Conduit Installation Method Statement

Step-by-step cable tray and conduit installation method with safety, quality and inspection procedures as per IEEE standards.



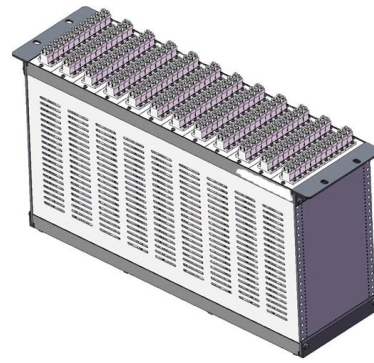
NEC Standards for Cable Trays: Grounding, Fill Capacity

This article provides a comprehensive framework that governs various aspects of cable tray installations, including the types of cables that are deemed acceptable for use, requirements for

The Standard for Cable Trays: How to Ensure Safe

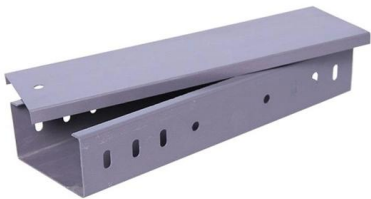


However, cable trays must comply with specific codes and standards to ensure proper design, installation, and maintenance. This article will provide an in-depth



Cable trays are structural components of a facility's electrical system

Since cable tray installations and the cables allowed in those trays are covered by OSHA and the NEC, the installations are also covered under BNL's Electrical Material and Installation Inspection (EMII)



Explaining NEC Article 392 on Cable Trays

NEC Article 392 explains cable trays, their components, appropriate wiring methods for cable trays, and instances where they are and are not



Cable Tray Systems: Requirements and Best Practices

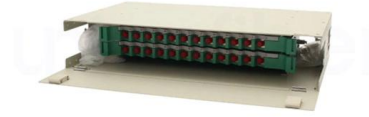
This article explains the main requirements and good practices for cable tray systems, including tray types, materials, loading, supports, bonding, cable selection, and installation details.



Installation Of Cable In Cable Trays: NEC, Safety



Installation of Cable in Cable Trays ensures proper routing, cable management, NEC compliance, grounding, fire safety, and load capacity.



Contact Us

For datasheets, pricing, or custom high-speed optical interconnect solutions, please visit:

<https://www.syropy.com.pl>