

Standard Requirements for Installation of Distribution Box Supports





Overview

Ensure safe placement: install in dry, accessible areas with good ventilation and at appropriate height (typically ~1. Choose the right box based on environment (indoor/outdoor), load capacity, and durability. Design requirements for low voltage distribution boxes cover NEC, IEC, and safety standards to ensure reliable, compliant electrical installations.



Standard Requirements for Installation of Distribution Box Supports

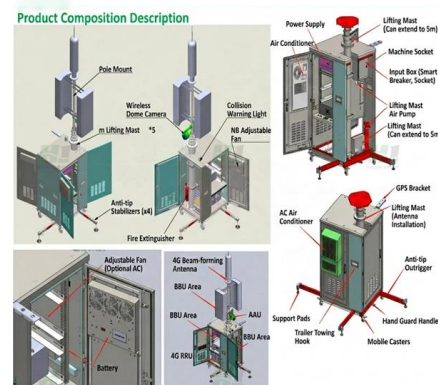


How to Install a Cable Distribution Box Safely and

In modern electrical systems, cable distribution boxes (also known as electrical distribution boxes or distribution boxes) play a crucial role as the key

How to Install a Distribution Box--A Comprehensive

Whether you are an electrical contractor or a construction brigade, knowing how to properly and safely install distribution boxes is the basis of



Distribution boards components

Distribution boards (generally only one in residential premises) usually include the meter (s) and in some cases (notably where the supply utilities impose a TT earthing system and/or tariff

How to Install a Cable Distribution Box Safely and

This article provides a detailed overview of the entire process of installing a distribution box, from pre-installation preparation to post-installation

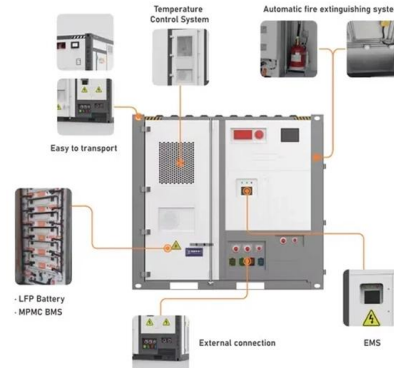


525-2016

Scope: This document is a guide for the design, installation, and protection of insulated wire and cable systems in substations with the objective of helping to minimize cable failures and

How to Install a Distribution Box--A Comprehensive

Distribution Box Installation: Put the distribution box on the installation surface, and align the position of the expansion bolts and tighten the screws. This



Outdoor Electrical Distribution Box Specifications: NEC

This specification guide provides system designers, electrical engineers, and procurement professionals with the technical criteria needed to





Latest Requirements for Distribution Box Installation under the US

When Professional Installation Matters Most While DIY electrical work has its place, distribution box installation isn't it. Consider these real cases: The Lakehouse Disaster: After saving

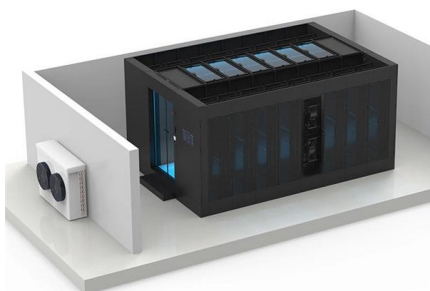
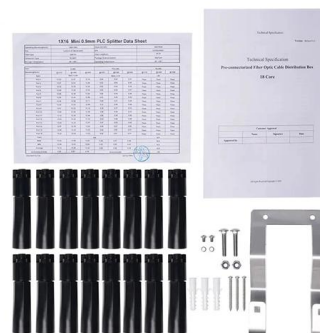


Installation requirements for distribution boxes

Installation of closed or explosion-proof electrical facilities; distribution box electrical components, meters, switches and lines should be arranged neatly, firmly installed, easy to operate.

What is the Ideal Installation Height for a Distribution Box

Install a distribution box at 4.5 to 5.5 feet high for safety, accessibility, and compliance. This height ensures easy use and protection from hazards.



Requirements And Specifications For Installation Of

The installation requirements and specifications of Distribution box involve many aspects, including site selection, fixing method, wiring specifications



Electric Panel Installation Method Statement

This document provides a method statement for installing and terminating electric panels and distribution boxes. It outlines 4 steps: 1) Pre-installation preparation



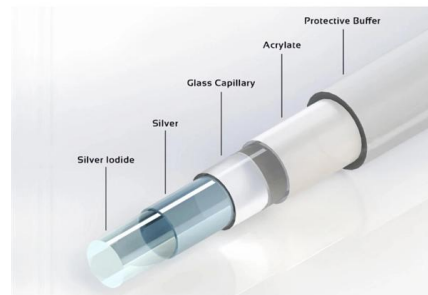
How to Improve the Installation Quality of Distribution Boxes

Learn key methods to enhance distribution box installation quality, including location, height, wiring, and safety compliance.



Brief Introduction To The Requirements Of Distribution Box

The distribution box device is the low-voltage terminal responsible for completing the system power control, protection, and distribution device conversion. The power



Design requirements and standards for low voltage

Design requirements for low voltage distribution boxes cover NEC, IEC, and safety standards to ensure reliable, compliant electrical installations.

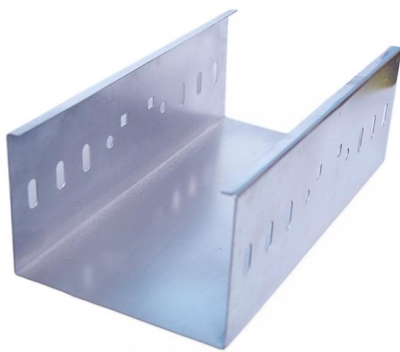


Requirements for distribution box at



construction site

1? The manufacture and installation of distribution box and switch box shall meet the following requirements: 1. The distribution box shall be made of iron plate or other fire-proof insulating



Transformer and Distribution Cabinet Equipment

2.1 Pre-installation Requirements for Complete Distribution Cabinets, Control Cabinets, and Distribution Boxes: - The indoor ceiling and wall decoration

The Complete Guide to Distribution Box: Installation, Types & More

Making Smart Electrical Infrastructure Decisions
Distribution boxes form the foundation of safe and reliable electrical systems. Understanding their components, installation requirements, and



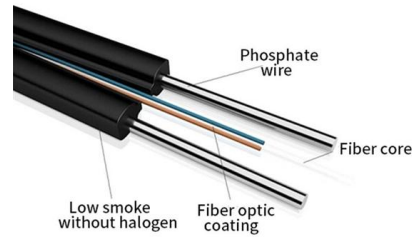
How to Improve the Installation Quality of Distribution Boxes

The installation of the distribution box must be level and stable. According to inspection standards, the permissible vertical deviation for boxes with a height less than 50cm is 1.5mm, and for boxes 50cm

IEEE 525-2007_accepted



IEEE-SA Standards Board Abstract: The design, installation, and protection of wire and cable systems in substations are covered in this guide, with the objective of minimizing cable failures and their



Summary of key points for construction and installation of distribution

The construction and installation points of distribution boxes and switch boxes are summarized as follows: 1. Select qualified products that meet national standards and safety requirements.

Transformer and distribution cabinet equipment installation, standards

Equipment installation location requirements
Transformer rooms, capacitor rooms, distribution device rooms, and control rooms should not have irrelevant pipes passing through them.



Distribution box

In this article, you will learn everything you need to know about installing, expanding or replacing a distribution box - from the legal basis to practical implementation.



Contact Us

For datasheets, pricing, or custom high-speed optical interconnect solutions, please visit:

<https://www.syropy.com.pl>