

Standard Requirements for Configuring Home Electrical Distribution Boxes





Overview

Ensure safe placement: install in dry, accessible areas with good ventilation and at appropriate height (typically ~1. In modern electrical systems, cable distribution boxes (also known as electrical distribution boxes or distribution boxes) play a crucial role as the key hub for managing, distributing, and protecting circuits. Whether it is residential buildings, commercial facilities or industrial sites, the. This highly technical guide details the exact engineering criteria required for selecting, precisely sizing, and optimally configuring the correct enclosure for your specific electrical load profiles. Read more about innovation and evolution to increase efficiency and sustainability of your medium. This guide covers split load vs dual RCD vs RCBO board configurations, circuit arrangement and allocation, BS 7671 labelling requirements, type testing under BS EN 61439, SPD installation, wiring best practice, and the common mistakes found during EICR inspections.



Standard Requirements for Configuring Home Electrical Distribution



Complete Guide For Distribution Boxes Types

Distribution boxes, also known as electrical distribution boards or panels, are pivotal components in electrical systems, ensuring the safe and organized distribution of

Understanding Distribution Boxes: Your Guide to Power

Distribution boxes help in organizing electrical circuits enabling proper organization in control and management preventing system failure and



Distribution Box Installation: A Complete Guide to Safe

The distribution box, often referred to as a breaker box, fuse box, or electrical panel, is a critical component of any electrical system. It acts as the central hub for

The Importance of Distribution Boxes in Electrical Systems

Learn more about how distribution boxes play a critical role in the safe and efficient operation of electrical systems.



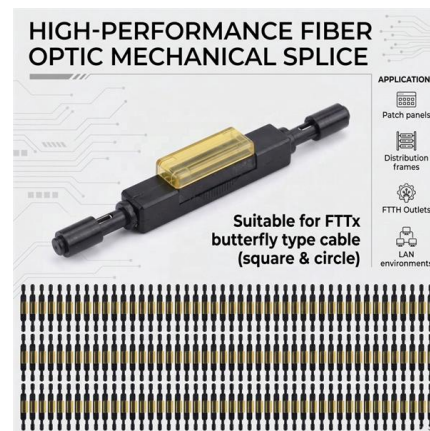
Electrical Distribution Box: Complete Panel Types Guide

We'll explain what they are, the different panel types you'll encounter, NEC 408 requirements that govern their installation, and common applications for



Understanding Distribution Boxes:A Comprehensive Guide

A distribution boxes is an essential device that manages the safe and efficient flow of electrical power throughout different areas of a building or facility.



What is a Distribution Box? - A Comprehensive Guide

Whether in homes, offices, or industries, its importance cannot be overstated. Understanding the Basics of a Distribution Box A electrical distribution





Distribution Box and Selection Guide

Factors to Consider When Choosing a Distribution box Type of Property The nature of your property plays a crucial role in determining the



Requirements And Specifications For Installation Of

The installation requirements and specifications of Distribution box involve many aspects, including site selection, fixing method, wiring specifications

Power Distribution Boxes Explained Simply

Learn what a power distribution box is, how it works, key components, types, and why it's vital for safe and efficient electrical systems.



Power Distribution Boxes Explained Simply

Discover the essentials of a Power Distribution Box--how it works, key types, benefits, and tips to ensure safe, efficient electrical power management.



Safe electrical box choices: the right box for you

This guide provides a detailed, step-by-step approach to selecting the appropriate electrical boxes for various installations, ensuring both safety and compliance with the National Electrical Code (NEC).

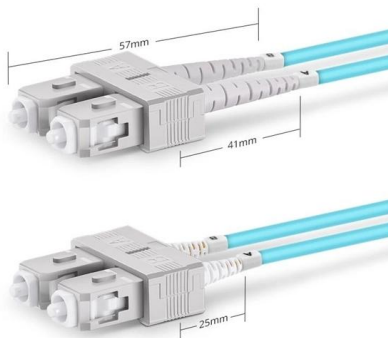


Cautions and Requirements for Installation of

Distribution box is a low-voltage distribution device which assembles switchgear, measuring instruments, protective appliances and auxiliary equipment in a closed

Distribution boards components

Distribution boards (generally only one in residential premises) usually include the meter (s) and in some cases (notably where the supply utilities impose a TT earthing system and/or tariff



Duplex SC UPC

Safety requirements of distribution box

The distribution box has the characteristics of small size, simple installation, special technical performance, fixed location, unique configuration function, not limited by



How to Choose the Right Distribution Box for Your Home or Workshop

This highly technical guide details the exact engineering criteria required for selecting, precisely sizing, and optimally configuring the correct enclosure for your specific electrical load profiles.

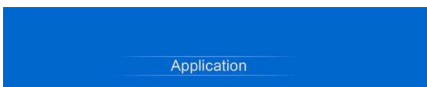


Distribution Boxes Explained: Types, Functions, and

Learn about distribution boxes, their types, functions, and safety features to ensure efficient and secure electrical power distribution in any building.

Electrical Distribution Panel Guide: Types, Sizing & 600

From residential 100-amp panels to massive 600 amp main distribution panels in commercial facilities, this comprehensive guide will help you



Electrical Control Panels & Distribution Boxes: Sizes,

Learn about control panels, breaker boxes, junction boxes, and custom enclosures. Explore standard panel sizes, applications, and key



Size determination, installation method and wiring mode

The distribution box is the central hub of the home circuit and the general control of our daily power consumption. It is an indispensable electrical equipment. If there

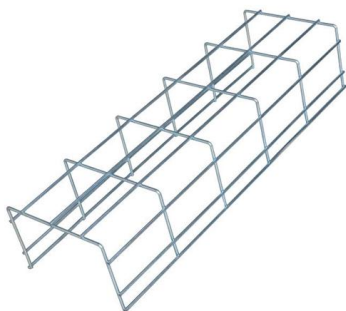
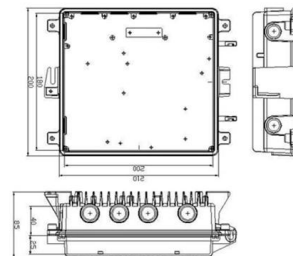


What Is an Electrical Distribution Box? A Complete Guide

An electrical distribution box routes power, prevents overloads, and keeps wiring organised--essential for safe, efficient home and industrial setups!

Outdoor Electrical Distribution Box Specifications: NEC

Complete specification guide for outdoor electrical distribution boxes covering NEC Article 312 requirements, NEMA ratings, sizing calculations, and



Key Points Of Installation And Collocation Of Distribution Box In

Distribution box and switch box shall be made of iron plate or high-quality insulating material, and the thickness of iron plate shall be greater than 1.5mm The electrical equipment in the distribution box



Electrical Installation Guide

The Electrical Installation Guide (wiki) has been written for electrical professionals who must design safe and energy efficient electrical installation, in compliance with international

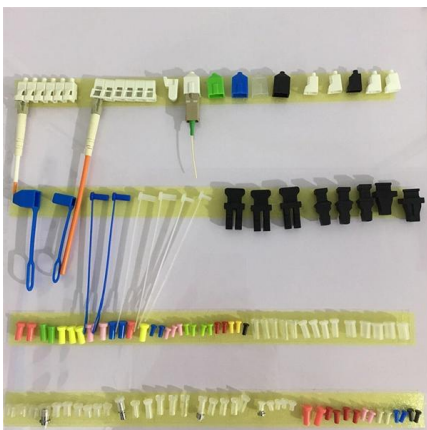


Distribution Board Wiring Guide , Consumer Unit Layout

A distribution board (commonly called a consumer unit in domestic installations) is the central point where the incoming electrical supply is split into individual circuits that serve different

How to Install a Cable Distribution Box Safely and

By following the guidelines in this article and working with reliable suppliers such as Chuanli, the safety, reliability, and compliance of electrical



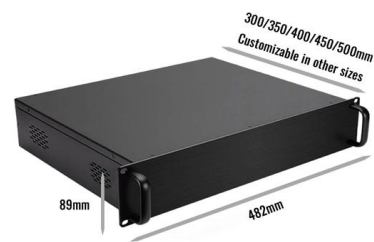
IEC Standard for Power Distribution Board Design and

Designing a power distribution board is not just about placing components inside a metal box. It requires a deep understanding of international



Summary of key points for construction and installation of distribution

The construction and installation points of distribution boxes and switch boxes are summarized as follows: 1. Select qualified products that meet national standards and safety requirements.



Contact Us

For datasheets, pricing, or custom high-speed optical interconnect solutions, please visit:
<https://www.syropy.com.pl>