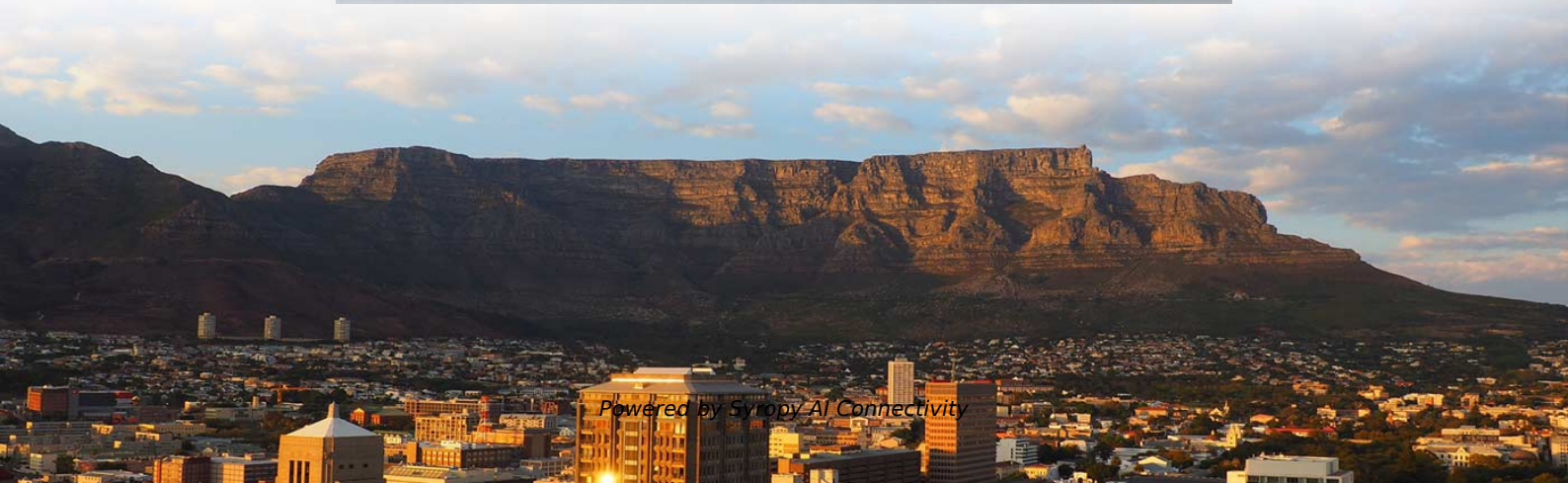
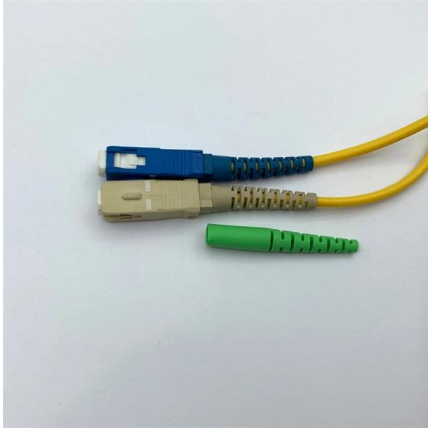


Standard Numbering of Water and Electricity Distribution Boxes





Standard Numbering of Water and Electricity Distribution Boxes



Pr8843

The purpose of this document is to specify a numbering and naming convention system to be applied across all of Unitywater's Wastewater Treatment Plants (WWTPs) Sewage Pump Stations, Water

The installation requirements for the distribution box

A distribution box is the heart of any electrical system. It takes the incoming power and safely distributes it to different circuits throughout your



Complete Guide For Distribution Boxes Types

Distribution boxes, also known as electrical distribution boards or panels, are pivotal components in electrical systems, ensuring the safe and organized distribution of



Home

These codes have been established by distribution companies and approved by the Abu Dhabi department of Energy and clearly set out our roles and responsibilities. Compliance with these



Understanding Distribution Boxes: A Comprehensive Guide

A distribution box, also known as a power distribution box or electrical distribution box, is used to distribute electrical power safely to multiple



Design requirements and standards for low voltage

You must make safety your top priority when working with low voltage distribution boxes. Design requirements help you follow important standards like



How To Label An Electrical Service Panel

When you have an electrical problem and need to shut off a circuit, you should be able to identify the controlling circuit breaker immediately by





Electrical Numbering System (Standardised) - PAKTECHPOINT

PDF file

Electrical - Standard Specifications - University of Washington

In accessible ceiling spaces and exposed in unfinished areas, label conduit with panel and circuit numbers of conductors routed through the conduit. Label conduit at all wall penetrations and

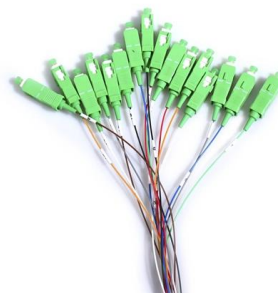


Standard Design And Construction Specifications For Water Systems

Distribution and transmission design operating pressures shall not be less than forty (40) psi, nor more than one hundred (100) psi in the water main, service connection and meter box at all times,

Electrical Identification

The purpose of this standard is to establish consistency in the naming of components in the electrical distribution system and to allow flexibility in obtaining maintenance history information.



Circuit Numbering and Labeling for Electrical Equipment

This standard describes requirements for numbering and labeling of real property electrical distribution equipment, circuits, and site lighting at Lawrence Livermore National



Laboratory.



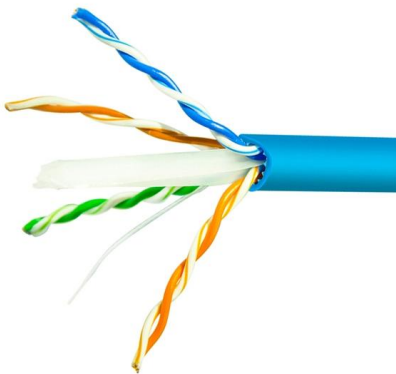
Electrical Equipment Numbering System in Buildings, Plants and

The following numbering system shall be used for major electrical equipment in the primary power distribution system, power supplies to process equipment, emergency



Outdoor Electrical Distribution Box Specifications: NEC

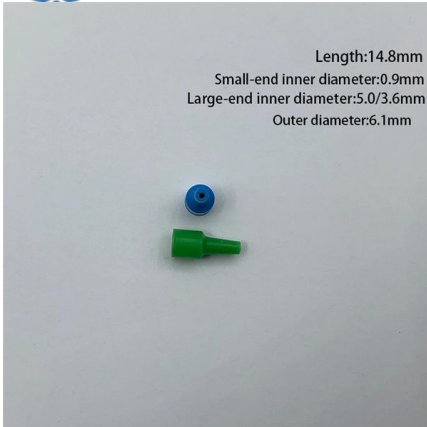
Complete specification guide for outdoor electrical distribution boxes covering NEC Article 312 requirements, NEMA ratings, sizing calculations, and



GTC Technical Guidelines

The position and number of service positions shall depend on the distance from each flat such that the lateral wiring can be installed within the design requirements of the current edition of BS7671





SEC DISTRIBUTION CONSTRUCTION STANDARD

6.1 As per SEC standard and practice, one to five meters can be installed on the front wall of the consumer. So installation of single, double, quadruple, CT-operated up to 400 Amps, CT-operated

International-electrical-standards-regulations

All electrical installations should comply with Brazilian standard ABNT NBR 5410. This document lays down detailed rules governing all aspects of wiring and designing on installation.



Guide on How to Label Electrical Panel & Electrical

Common Naming Conventions: Here are some examples of the most common electrical equipment ID naming conventions we have encountered: Sequential

IEC / BS 7671 Codes for Consumer Unit and Distribution

According to BS 7671: 536 and IEC 61439: distribution boards, consumer units and related devices and equipment must be selected according to their current





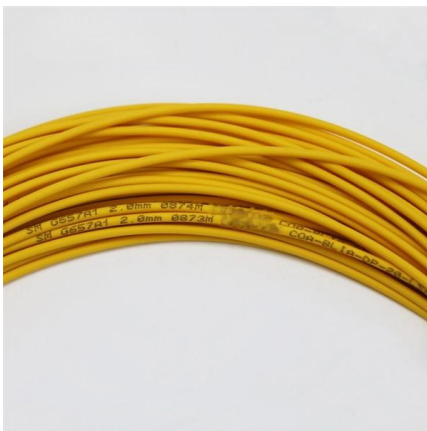
Pr8843

3.6 Drawing or Document Number - NNQQ
Drawing and Document numbers are generated using the Process unit and system numbering system identified in Appendix F. Drawing and Document



How to (Quickly) Label A Home Electrical Panel Directory

Two, label your home's electrical panel directory so that it is accurate, complete and legible. And today I'm going to outline my systematic approach to



Electrical Identification

NOTE: The component identification number, or sequence number, is just a simple numbering of similar equipment on the same floor numbered from left to right as seen on the electrical distribution riser

Equipment Tagging and Numbering Standards

This document provides guidelines for numbering drawings, documents, equipment, and instruments for Unitywater projects. It outlines systems for numbering based



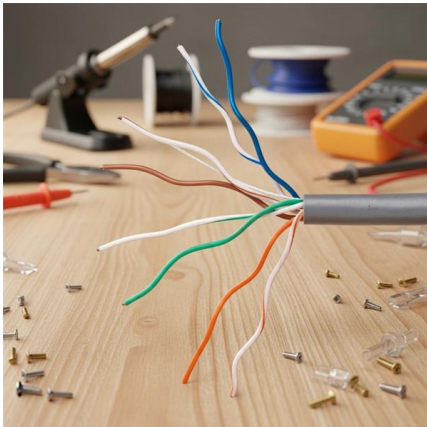
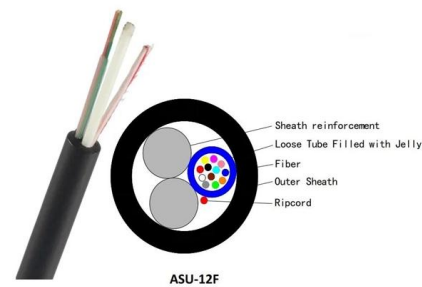


ELECTRICITY

PREFACE: The purpose of these Regulations is to establish standards, principles and guidelines that promote the design, construction, installation, maintenance, operation, energy conservation and

The Complete Guide to Distribution Box: Installation, Types & More

Consult with qualified electrical professionals to ensure your distribution boxes meet current standards and can accommodate future needs. Your proactive approach to electrical



IEC Standard for Power Distribution Board Design and

Designing a power distribution board is not just about placing components inside a metal box. It requires a deep understanding of international

GENERAL ELECTRICAL NOTES

GENERAL ELECTRICAL NOTES ALL CONDUCTORS OPERATING AT 50 VOLTS OR GREATER SHALL BE IN RACEWAY. ALL RACEWAY WITHIN THE STRUCTURE ABOVE THE FLOOR SLAB



Wiring regulations: what are the labelling requirements?



Section 514, entitled 'Identification and Notices', provides clear instruction, with label illustrations, that are supported by UK health and safety law.



Requirements And Specifications For Installation Of

In flammable and explosive environments, explosion-proof distribution boxes should be selected and explosion-proof treatment should be carried out.

More products

OUTDOOR CABINET



FTTX SOLUTION



DATA CENTER



Contact Us

For datasheets, pricing, or custom high-speed optical interconnect solutions, please visit:
<https://www.syropy.com.pl>