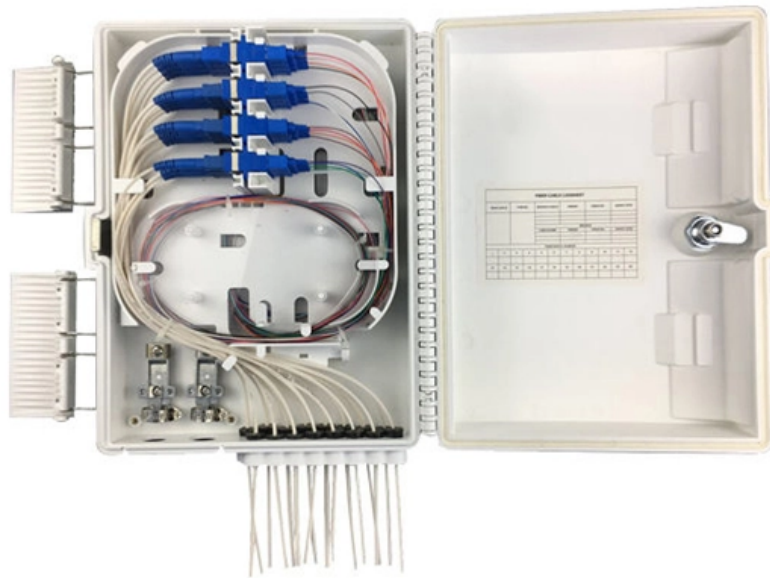


# **Standard Drawing of Construction Elevator Distribution Box**





## Standard Drawing of Construction Elevator Distribution Box

---



### Distribution materials specification-construction standard for

Provides construction standards and specifications for materials used in underground distribution networks.

### Elevator Plans

Elevator Plans is here to connect the dots between demand from micro-manufacturers and freelancers, with the supply from experienced industrial

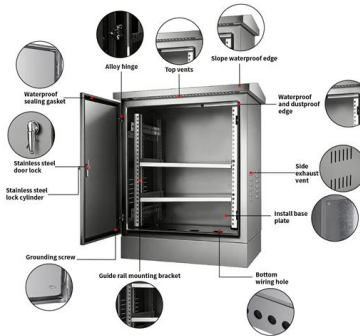


### Elevator Project Planning Guide

Our Elevator Project Planning Guide will help make designing the elevators in your next project quick and easy. This useful guide compiles product brochures,

### Elevator-Construction Details DWG Plan for AutoCAD

Home / Misc / Mechanical, Electrical & Plumbing (MEP) / Elevator-Construction Details DWG Plan for AutoCAD



### Code of Practice 101 For Distribution Substation Design

CODE OF PRACTICE 101 FOR DISTRIBUTION SUBSTATION DESIGN Version 15 Issued By : Asset Management Department Asset



### NEMA

An ANSI-accredited Standards Developing Organization, NEMA gives members a competitive edge in today's rapidly changing marketplace by expanding market opportunities, acquiring exclusive



### Layout1

DRAWINGS SHALL SHOW, ALL DUCTWORK, AIR DISTRIBUTION, MECHANICAL EQUIPMENT, MECHANICAL PIPING, FIRE PROTECTION PIPING, PLUMBING PIPING, CABLE TRAYS,





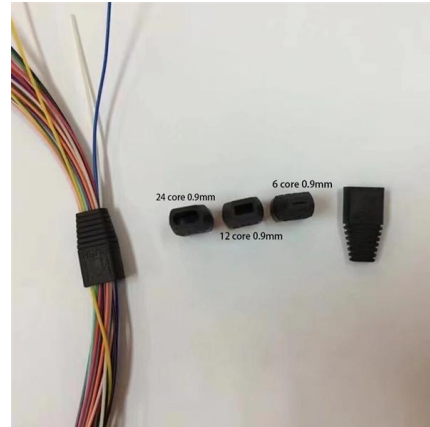
## TECHNICAL SPECIFICATION FOR LT DISTRIBUTION BOX

General Technical Particulars for LT Distribution Boxes : - The L.T. Distribution Boxes should be of the dimensions as per the drawing & details in the table furnished.



### Distribution Design and Construction Package Manual

If standard construction as per FortisBC standards is designed, there is no requirement to issue the drawings unless the work is being issued to external construction crews who have no access to the



### Get Your Standard Power Distribution Box Drawing

Our Standard Power Distribution Box drawing is the essential, universal blueprint you need. This CAD file provides the complete fabrication and layout details for the most common type of



### ELEVATOR HOISTWAY EQUIPMENT:

Understand the construction of corner-post elevators, and the causes of the platform sagging at one of its corners. Have developed a basic under-standing about the functions of the guide rails, the forces



## Manual Of Civil Drawings

Before elevator installation, all floor door apertures must have a safety protection enclosure with a height of not less than 1.2 m, and should ensure that they need to be able to withstand the forces shown.

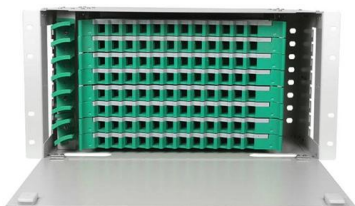


## APPENDIX 9B Standard Drawings for Electrical Design

INTRODUCTION This appendix presents an example set of SPU Standard Drawings for electrical design. Drawings and specifications form the bulk of contract documents. They provide detailed

## Elevators

This category contains dwg files useful for designing: elevators of all types and sizes, single and double elevators with and without stairs, vertical sections.



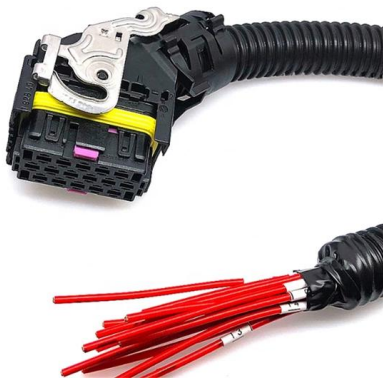
## Residential Elevator Design Guide

About Symmetry Elevating Solutions Symmetry is a beautifully crafted, expertly engineered accessibility-related product line proudly made in the U.S.A. at the Bella Elevator LLC manufacturing plant.



## Cambridge Elevating

Before starting construction please consult the specific application drawings provided by Cambridge Elevating or an authorized distributor that indicate exact dimensions for your project.



### Standard Drawings

To view or download the following drawing titles in PDF format, please [click here](#). If you have AutoCAD program, click the following drawing titles to download them in DWG format:

### Please note H

Emergency lowering access hatch locations shown in the drawing above are suitable for elevators with the upper landing door located adjacent to the rail wall.



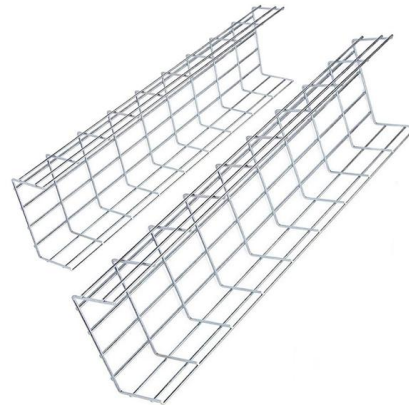
### Elevator Section Drawing

Elevator section drawings are pivotal in the successful design and installation of elevators in buildings. By emphasizing safety, efficiency, and compliance, these drawings guide the entire construction



## Download CAD files for Electrical Distribution Products

Now you have access to a huge range of Schneider Electric CAD files for your projects, without having to call Customer Support and request them. It's

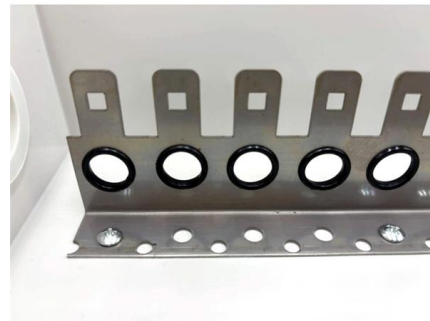


## Bucket Elevator Catalog

Martin offers not only a complete line standard elevators but can design and manufacture MTO elevator specific for a customer's application. The bucket elevator catalog may be used to assist in making a

## Quality Control for Installation and Construction of Electrical Riser

Master the key quality control methods for electrical riser & distribution box installation. Ensure safety, compliance, and prevent hazards in building electrical systems.



## Elevators

Summary: The CAD files for CSI section 142000, focusing on elevators, provide detailed, scalable drawings that are crucial for the design, installation, and



## Installation Diagram

In the civil construction process of the lift shaft, two holes larger than  $\varnothing 60$  are reserved on the doorway surface and the opposite wall at the same elevation as the top floor floor, if they are reserved in the

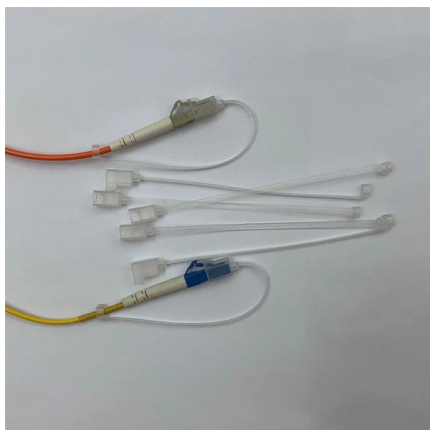
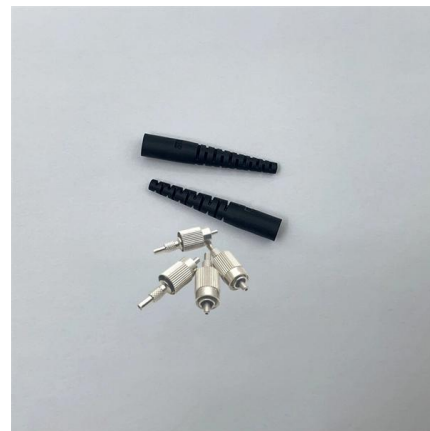


## Elevator Design , PDF , Elevator , Transportation

The document provides basic specifications and important information on elevator planning including horizontal dimensions for different elevator configurations and

## Reliable Standard Distribution Box Drawing Essential

The Standard Distribution Box (DB) is arguably the most critical component in any electrical installation, serving as the central hub for power



## Design Manual

For optimum distribution use drum feeder, a product dispenser, or a vibrating feeder especially designed for the elevators. If these are not included in your supply, the distribution is to be controlled



## Distribution Design and Construction Package Manual

The purpose of this bulletin is to cover the composition, distribution, approval, and return data requirements of design and construction packages for distribution projects.



### Elevator control PB panelboard design guide

The Elevator Control Panelboard is designed to replace multiple components provided in elevator control rooms, thus consolidating and standardizing this area. With the ability to control up to four

## Contact Us

---

For datasheets, pricing, or custom high-speed optical interconnect solutions, please visit:  
<https://www.syropy.com.pl>