

Standard Dimensions of Class A Cable Trays





Standard Dimensions of Class A Cable Trays



Cable Tray Width, Dimensions and Specifications as per

Cable Tray Width, Dimensions and Specifications as per NEC Learn about cable tray width dimensions and specifications as per NEC standards. Understand types,

Cope Ladder Master Spec

Cable Tray Hold Downs - Cable tray supported on standard 1-5/8 inch strut shall be held down with Cope style hold-down brackets. Such as the 9131 series for ladder type cable trays and 90XX series



LEGRAND CABLE TRAYS TECHNICAL GUIDE

NEMA VE 1-2017 Specifies requirements for metal cable trays and associated fittings designed for use in accordance with the rules of Canadian Electrical Code, Part I and the National Electrical Code®

Metal Cable Tray Systems Standard NEMA VE 1-2017

NEMA VE 1-2017 standard for metal cable tray systems. Covers construction, materials, dimensions, load capacity, and testing.



Cable Tray Dimensions Guide: Standard Sizes, Tray

Explore standard sizes by tray type, understand width and depth limits, and see how to calculate and choose compliant cable tray sizes for real projects.



LEGRAND CABLE TRAYS TECHNICAL GUIDE

Not all cable trays are equivalent. The mechanical and electrical characteristics, tests, certifications, overall quality management, recommendations mentioned in this technical guide only apply to our



Document DICOS

This harmonized standard was prepared by the CANENA Technical Harmonization Committee for Metal Cable Tray Systems, comprising members from CSA Group, the National Electrical Manufacturers





Cable Tray

Cable Tray Cable trays are mechanical support systems that provide a rigid structural system for electrical cables, raceways, and insulated conductors used



26 05 36 Cable Trays for Electrical Systems

Install expansion connectors where cable trays cross building expansion joints and in cable tray runs that exceed recommended dimensions. Space connectors and set gaps in accordance with

Full NEMA cable tray and cable management catalog

Cable tray must be supported on spans shorter than or equal to the length of the cable tray being installed. Individual rungs will support without collapse a 200 lb. (90.7 kg) concentrated load applied



12-SDMS-06

4.1.2 The Metallic cable trays shall be manufactured in accordance with NEMA VE-1 standard and/or equivalent IEC standard. 4.1.3 Metallic cable trays shall be designed as a mechanical support for



Ultimate Guide to NEMA Cable Ladder Size (NEMA 1)

This guide consolidates the key dimensions across all four NEMA cable ladder size classes based on the provided product specifications.



Full cable tray systems specification document

A. General: Except as otherwise indicated, provide metal cable trays, of types, classes and sizes indicated; with splice plates, bolts, nuts and washers for connecting units.



Cable Tray Technical Guide A practical guide to product selection and

In designing supports for a cable tray system, consideration should be given to the loads associated with future cable additions and any additional loading that may be applied to the cable tray system (e.g.,



Cable Tray Width, Dimensions and Specifications as per

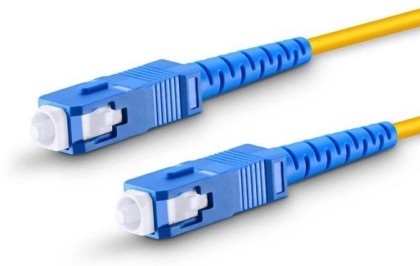
Learn about cable tray width dimensions and specifications as per NEC standards. Understand types, sizes, materials, and installation guide





TECHNICAL AND SIZING DATA

Even though a 900 mm wide tray has six (6) times the volume of a 150 mm wide tray, it cannot carry any more cable weight. When piling cable in tray, the required air separation between cables can be



222 MANUFACTURING LTD

HOW TO SELECT CABLE TRAY MATERIAL AND FINISH CODE Tray is offered in a variety of material types and finishes - aluminum, steel, stainless steel, paint ready. Refer to the material and finishes

Types of Cable Trays - Advantages, Applications and Sizes

Explore the types of cable trays, their advantages, applications, and standard sizes. Learn how they improve cable management and support various industries.



T& B® Cable Tray quote specifications requirements

The side rail height is defined as the outside height of the tray. The load depth is the internal dimension of the tray.

TECHNICAL AND SIZING DATA



100% Canadian Owned, CSA and UL certified. Complete technical support and service for Unitrays product lines. Custom sizing and non-standard tray lengths are available. Interchangeable with other



CABLE TRAY

This standards publication was developed by the NEMA Metal Cable Tray and Nonmetallic Cable Tray Sections. Section approval of the standard does not necessarily imply that all section members voted

Cable Tray Dimensions and Specifications as per NEC

Many electrical systems employ cable trays. They route cables safely & efficiently. NEC defines minimum cable tray size & electrical installation



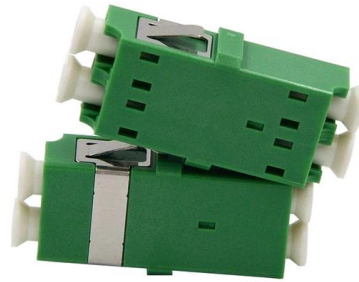
CABLE TRAY SYSTEMS GUIDE

The design and cost of the cable tray is greatly affected by this designation. In order to determine the most appropriate and economical system, a class should be selected that reflects the actual total



Technical information

Technical information CSA and NEMA loading classes The standard classes of cable trays, as related to their maximum design loads and to the associated design support spacing based on a simple beam



Contact Us

For datasheets, pricing, or custom high-speed optical interconnect solutions, please visit:
<https://www.syropy.com.pl>