

Specifications of Finished Cable Trays for Commercial Use





Specifications of Finished Cable Trays for Commercial Use



Cable Tray Systems: Requirements and Best Practices

Cable tray systems are structural components used to support insulated conductors and control, instrumentation, and communication cables. They are typically installed overhead, along

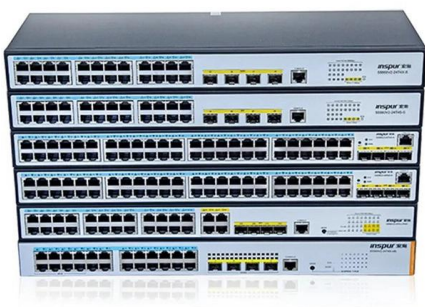
B-Line series Cable Tray Design Considerations

Cable tray support locations are defined by the NEMA VE-1 and VE-2 Manufacturing & Installation Standards, which specify the requirements for cable tray systems designed for use in accordance



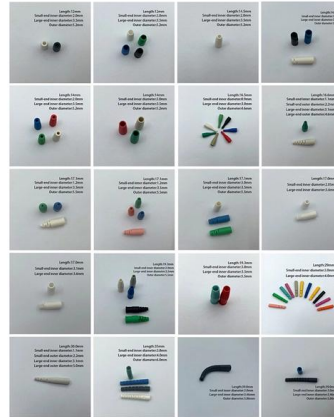
Cable Tray Technical Guide A practical guide to product selection and

SOLID-BOTTOM CABLE TRAY Providing additional cable protection, solid-bottom cable tray is sometimes preferred to support and protect numerous small instrumentation and control cables.



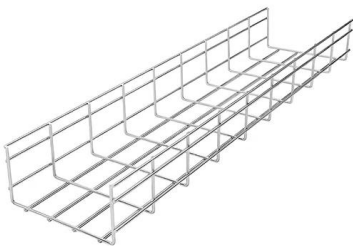
26 05 36 Cable Trays for Electrical Systems

Description: This product category covers metal cable trays and metal cable tray systems intended for field assembly and for use in accordance with Article 392 of NFPA 70.



Cable tray manual

For commercial and industrial cable tray wiring systems: Type ITC, Type MC, Type TC, and Type PLTC multiconductor cables are the most commonly used cables. Type MI and Optical-Fiber cables are



Perforated Cable Tray Sizes: A Comprehensive Guide

Perforated cable trays are commonly used to support and organize cables in industrial, commercial, and residential buildings. These trays come in various sizes and specifications, allowing



Understanding Commercial Complex Cable Trays: Your

Discover effective Commercial Complex Cable Tray solutions. Learn about design, installation, maintenance, and how to choose the right system for

What is the standard size of cable tray?



What is the standard size of cable tray? The standard sizes of cable trays vary depending on the manufacturer, application requirements, and regional



Cable Trays

SRA Solutions Cable Trays provide secure, configurable vertical cable management in either Commercial or SCEC racks.

Cable Trays

Heavy Duty Cable Tray Systems Heavy duty cable trays and cable ladders are manufactured from pre-galvanized or hot-dipped galvanized sheet metal,



Product Catalogue Cable Management Solutions

Cable ladder is a more reliable, less expensive solution for supporting cable, which is easier to maintain, proves more adaptable to changing needs, and is more suitable for harsh and corrosive environments.



26 05 36 Cable Trays for Electrical Systems

EATON B-LINE SERIES GUIDE SPECIFICATION
Section 26 05 36 - CABLE TRAYS FOR
ELECTRICAL SYSTEMS 26 05 364/2025 Specifier
Notes: This product guide specification is written



SECTION 260536

Use UL Classified splicing methods to ensure cable tray is electrically continuous and bonded as recommended by MonoSystems. Ground cable trays at end of continuous run.

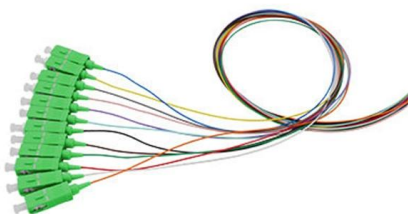
Microsoft Word

Cable Tray Types & Specification Perforated Cable Trays Features Moderate ventilation with added cable support advantage Thickness available 1.2mm, 1.6mm, 2.0mm, 2.5mm, 3.0mm.



CABLE TRAY SYSTEMS GUIDE

Hubbell's NEXTFRAME® Ladder Tray is the effective and widely used cable runway that supports and delivers bundles of cable between cabinets, racks, and closets, along walls, and suspended from



Cable Trays Selection Guide: Types,



Features,

Cable trays are components of support systems for power and communications cables and wires. A cable tray system supports and protects both power and



Niedax Cable Tray

Due to its unique composition it offers a self healing property on cut edges. HRCA (Hot Rolled and Close Annealed): Trays are made of hot roll steel which shall meet IS2062 standard. CRCA (Cold Rolled

HOW TO CHOOSE THE RIGHT CABLE TRAY

A cable tray is a system used to support and route cables and wiring in an industrial environment. Cable trays are used in various installations, including commercial construction, data centers, computer



B-Line series Cable Tray Design Considerations

Is your cable tray system optimized for safety, dependability, space and cost savings? Cable tray (or cable ladder) systems are a popular alternative to electrical conduit systems, as they have an





Full cable tray systems specification document

B. Cable tray systems are defined to include, but are not limited to straight sections of [ladder type] [trough type] [solid bottom type] [channel type] cable trays, bends, tees, elbows, drop-outs, supports



Product Specifications: CABLE TRAY

FDG CABLE TRAY ng; Power, Data, and Audio Visual. A quick and easy system to install without the need for specialised tools or equipment, makes it a first choice for Comm solution that works for your

Cable Tray Technical Guide A practical guide to product selection and

In designing supports for a cable tray system, consideration should be given to the loads associated with future cable additions and any additional loading that may be applied to the cable tray system (e.g.,



CABLE TRAY

SFSP wire Basket Trays have a fast connection profile for installations requiring long runs of straight Cable Trays lengths. Applications : Network cabling, wiring closets, fiber-to-desktop applications and



LEGRAND CABLE TRAYS TECHNICAL GUIDE

Not all cable trays are equivalent. The mechanical and electrical characteristics, tests, certifications, overall quality management, recommendations mentioned in this technical guide only apply to our



Cable Tray Size Chart and Selection Guide

Selecting the appropriate electrical cable tray dimensions is a critical decision that directly impacts the safety, efficiency, and longevity of any industrial or commercial electrical installation.

Contact Us

For datasheets, pricing, or custom high-speed optical interconnect solutions, please visit:
<https://www.syropy.com.pl>