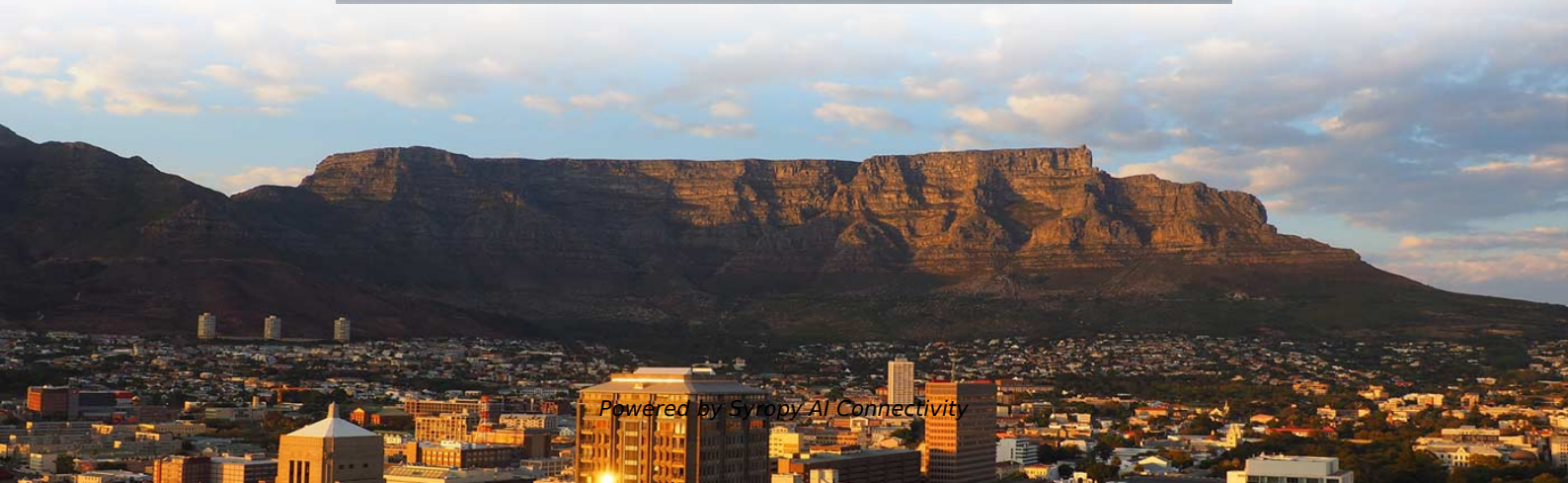
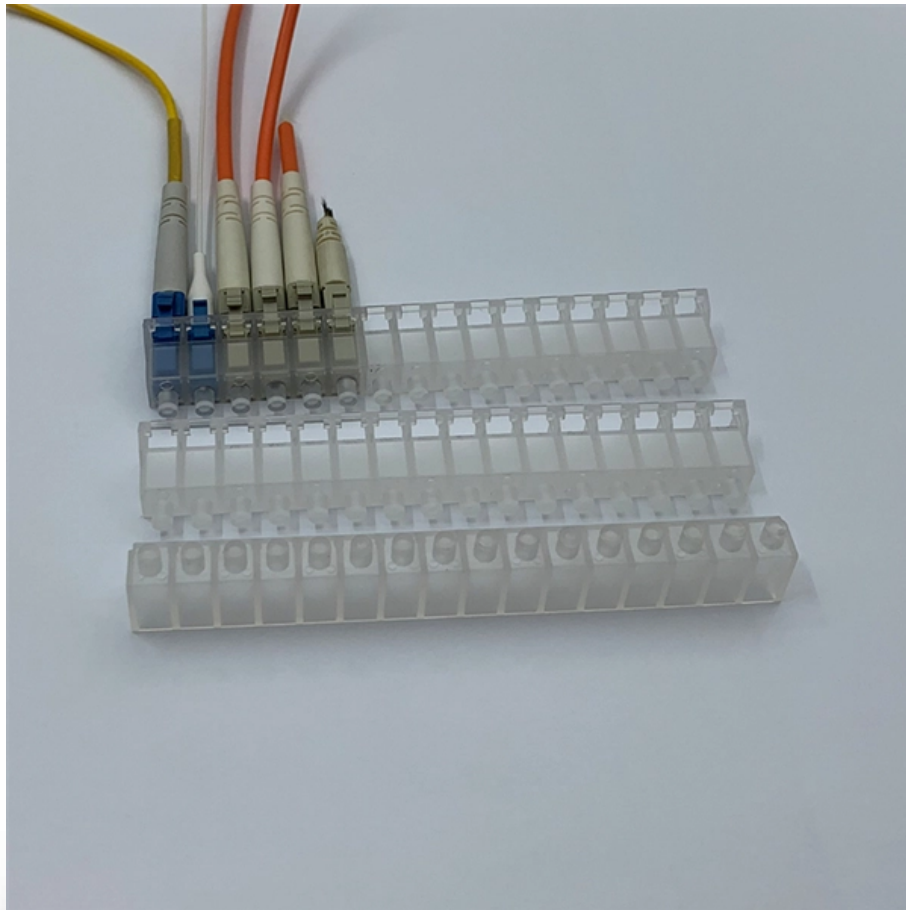
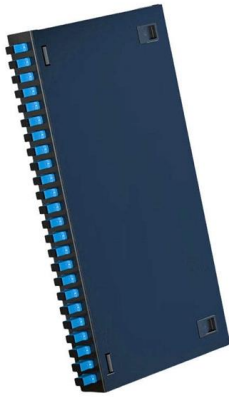


Specifications of Colombian Galvanized Vertical Shaft Cable Trays





Specifications of Colombian Galvanized Vertical Shaft Cable Trays



Galvanized Large-Span Cable Tray For Vertical Shaft

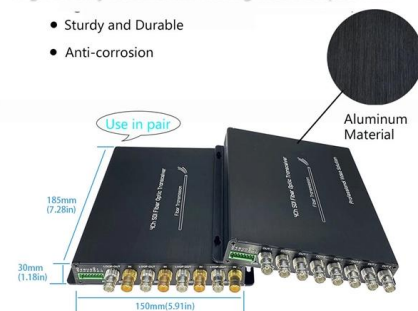
Vertical shaft cable trays play an quintessential role in electrical systems. Their lightweight design, first-rate thermal conductivity, and low-energy manufacturing system make them drastically satisfactory in

Cable Tray Design Standards for KUMPP

This document provides a design basis report for cable trays for a 4000 MW coal-based power plant in Krishnapatnam, Andhra Pradesh. It outlines the design

High Quality Aluminum Housing with Compact Size

- Sturdy and Durable
- Anti-corrosion



Cable Tray Technical Specifications , PDF

The document provides a technical data sheet for cable trays including ladder and

Cable Tray Specifications and Sizes , PDF , Sheet Metal

The data sheet provides specifications for standard cable trays and accessories. Standard cable trays are 2.5 meters in length with a maximum thickness



LEGRAND CABLE TRAYS TECHNICAL GUIDE

Not all cable trays are equivalent. The mechanical and electrical characteristics, tests, certifications, overall quality management, recommendations mentioned in this technical guide only apply to our



GUIDE CABLE TRAYS TECHNICAL

NEMA VE 1-2017 Specifies requirements for metal cable trays and associated fittings designed for use in accordance with the rules of Canadian Electrical Code, Part I and the National Electrical Code®



CABLE MANAGEMENT SYSTEMS CABLE TRAYS & ACCESSORIES

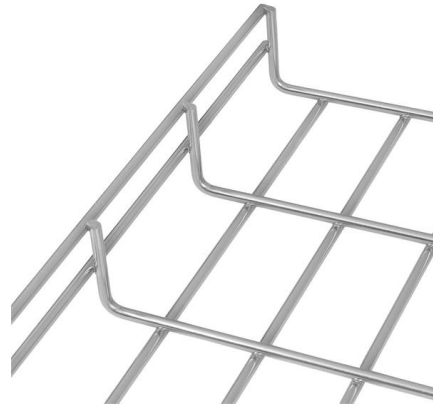
Cable Trunkings Accessories are offered in a comprehensive range. Mill galvanized, hot-dip galvanized, and powder coated





CABLE TRAY

Cable Support Systems are well designed to provide necessary support for cable trays, cable ladders and trunkings. Cable supports are manufactured according to common standards from high quality



CABLE TRAY, CABLE LADDER, CABLE TRUNKING CATALOGUE

Fitting and accessories. with the same or different width of the cable run. All fittings are available in sizes and types corresponding to the straight cable tray sections. These fittings are including: elbow,

Typical Design Philosophy of Cable Trays for Power

Cable trays shall be complete with necessary hot dip galvanized sheet steel accessories such as coupler plates, ground continuity connections, clamps, nuts,



PATNY Ladder Type Cable Trays (LTCT)

Patny Ladder type cable trays. Patny Systems designed cable trays to provide an efficient and economical method of cable management. Reach us today.



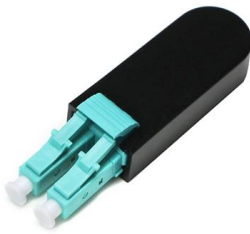
12-SDMS-06

Carbon steel cable trays intended for installation in corrosive or highly corrosive environments with severe alkaline and acidic conditions shall be hot-dip galvanized zinc after fabrication.



CABLE TRAY CABLE TRAY

Cable Tray e lengths. They ar 1 eir steel. Often, they are fabricated from pregalvanized s long corrosion resistant life, with a clean looking, high quality surface which is great for inside installation where they



CABLE MANAGEMENT SYSTEMS CABLE TRAYS & ACCESSORIES

We manufacture a wide range of products capable of providing the characteristics which respond to the proposed application, along with quality of assembly, speed of installation, and cost-saving cable trays.



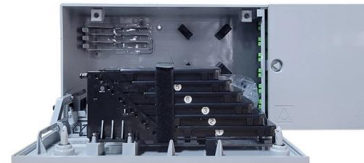
Best Practice Guide to Cable Ladder and Cable Tray Systems

These guidelines will be particularly useful for the design, specification, procurement, installation and maintenance of these systems. Cable ladder systems and cable tray systems are designed for use



Ladder -Type Cable Tray , Galco S.A.S., Colombian

The ladder-type cable tray is designed under the NEMA VE-1 regulation, following the RETIE guidelines. Its main function is to support cables, wires, or conduits.



Cable Tray Specifications and Guidelines

This document provides general guidelines for cable trays and their installation. It discusses the different types of cable trays, including perforated

Cable Tray , EAE Electric , Medium & heavy duty cable

Explore EAE Electric's medium and heavy-duty cable tray systems designed for optimal cable management and durability in industrial and commercial applications.



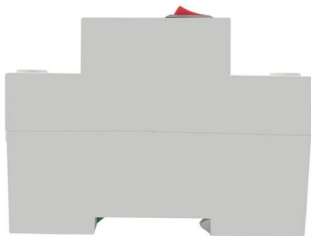
Galvanized Large-Span Cable Tray For Vertical Shaft

The vertical shaft cable tray adopts lightweight design, considerably reducing improvement costs, minimizing vertical shaft loads, and possessing high-quality thermal conductivity, which can



Product Catalogue Cable Management Solutions

With over 20 years of experience T&B Cable Tray provides a complete solution in cable management systems including design, manufacturing and technical support by offering a complete solution for



QCS 2010: Cable Tray Specifications , PDF

It specifies that cable trays shall be constructed from hot-dipped galvanized mild steel with a minimum thickness of 1.5mm. Tray components must be accurately

Full cable tray systems specification document

B. Cable tray systems are defined to include, but are not limited to straight sections of [ladder type] [trough type] [solid bottom type] [channel type] cable trays, bends, tees, elbows, drop-outs, supports



Cable Tray Specifications and Sizes

The document specifies requirements for cable trays, including that they be fabricated from galvanized sheet steel in standard lengths and widths. It provides



Steel cable tray

Ventilated A fabricated structure consisting of integral or separate longitudinal rails and a bottom having openings sufficient for the passage of air and utilizing 75% or less of the plane area of the surface to



Cable Tray Institute

The Cable Tray Institute (CTI) was founded in 1991 to support the cable tray industry by engaging in research, development, education, and the dissemination of

Types of Cable Trays - Advantages, Applications and Sizes

Explore the types of cable trays, their advantages, applications, and standard sizes. Learn how they improve cable management and support various industries.



Technical Specification for Cable tray installation and cable laying work

1. Scope :- This specification covers the following major activities; - Fabrication and installation of Mild Steel (MS) support structure for Galvanized Iron (GI) Cable tray. - Installation of perforated GI Cable



Cable Tray Technical Guide A practical guide to product selection and

Cable tray is considered to be a system. It must provide continuous support for cables, and the electrical continuity of the cable tray system must be maintained.



Contact Us

For datasheets, pricing, or custom high-speed optical interconnect solutions, please visit:
<https://www.syropy.com.pl>