

Special fiber optic cable G 654 for door-to-door delivery in the United States





Overview

654 describes the geometrical, mechanical and transmission attributes of a single-mode optical fibre and cable which has the zero-dispersion wavelength around 1300 nm wavelength, and which is loss-minimized and cut-off wavelength shifted at around the. have announced a new proposal for long-haul optical network cables that will 'break through the glass ceiling' of data transmission limits to ensure the ever-growing demands of data centres can be supplied. To support these high capacity systems in terrestrial backbone networks, low attenuation and large core area fibers compliant with Recommendation ITU-T G 654. E fibre and cable is rapidly increasing in these years, it would contribute more for the improvement of optical network in future. Over longer distances, such as between two data centres, signal regeneration or addition ng-distance transmission," said Xavier Renard, Telecom Marketing Di ector at ACOME.



Special fiber optic cable G 654 for door-to-door delivery in the United States



High Speed Long-Haul Optical Fiber Solution

G.654.E single-mode fiber is deemed as a promising candidate to optimize the transmission performance for next-generation ultra high-speed long

Optical cable with ITU-T G.654.E fibre removes barriers

Their solution combines two existing fibre grades to provide a cable solution that enables longer transmission distances, higher data rates per



Recommendation ITU-T G.654 (08/2024)

Recommendation ITU-T G.654 describes the geometrical, mechanical and transmission attributes of a single-mode optical fibre and cable which has the zero-dispersion wavelength around 1300 nm

What Is The Difference Between G.654E and G.654C

Free Samples Available: Test our G.654.E fiber and other products before bulk orders! For high-speed, low-loss optical transmission, G.654.E fiber is



ITU-T G.654.E Fiber, PureAdvance for Terrestrial Long-Haul Networks

0.16 dB/km or less, which are fully compliant with ITU-T G.654.E. In this whitepaper, we review ITU-T G.654.E fibers from various points of view; what G.654.E is, what the application of G.654.E is, why

Optical Fiber Types

ITU Standards The ITU has defined a series of recommendations that describe the geometrical properties and transmissive properties of multimode and single-mode fiber-optic cables. The four



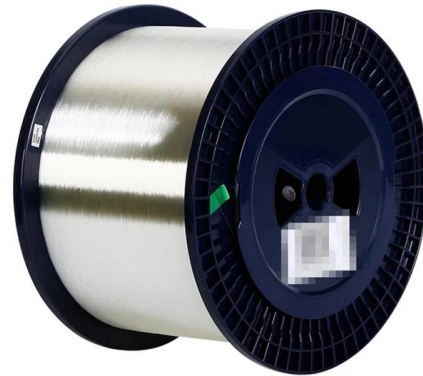
yingdapc

Hier sollte eine Beschreibung angezeigt werden, diese Seite lässt dies jedoch nicht zu.



G654.E Fiber Optic Cables

Experience excellence with Huihong Technologies Limited as we provide top-tier G.654.E fiber optic cables that ensure optimal performance without compromising



TXF® Optical Fiber , G.654.E Fiber , Corning

The superior attributes of TXF ® optical fiber, compliant to ITU-T G.654.E, allow for the provision of an additional network margin that can be leveraged to enable reliable, high-data-rate transmissions over



High-Speed Long-Haul Optical Fiber Solution

As the demand for high-speed and long-haul optical communication continues to grow, the selection of the right fiber optic solution becomes crucial. G.654.E single-mode fiber is specifically



ITU-T Rec. G.654 (07/2010) Characteristics of a cut-off shifted, single

Summary Recommendation ITU-T G.654 describes the geometrical, mechanical and transmission attributes of a single-mode optical fibre and cable which has the zero-dispersion wavelength around



GL FIBER® G.654.E Bend-Insensitive Fiber



G.654.E fibre is featured with larger effective area and lower attenuation than normal fibre, and more suitable for long-haul transmission with high capacity and speed rate.



TXF Optical Fiber , Large Effective Area G.654.E Fiber

The superior attributes of TXF ® optical fiber, compliant to ITU-T G.654.E, allow for the provision of an additional network margin that can be leveraged to enable

G654-E Fiber Cable Specifications , PDF , Optical Fiber , Optics

Data sheet for G654-E fiber in hybrid cable (96F) 48 (G652-D) +48 (G654-E) Design and special properties o Light, thin and particularly robust cable o Cable for direct burial, in applications with high



FS Community

Hier sollte eine Beschreibung angezeigt werden, diese Seite lässt dies jedoch nicht zu.



Amazon . Spend less. Smile more.

Amazon . Spend less. Smile more.



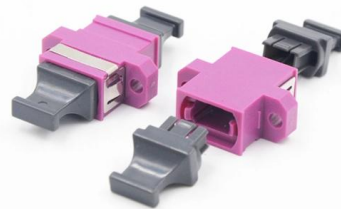
Optical cable with ITU-T G.654.E fibre removes barriers to delivering

One of the key advantages is gradual migration. With both G.652.D and G.654.E fibres combined, operators can transition to higher-capacity architectures without fully overhauling existing



G.654.E Fibre Cable

As a high-tech European manufacturer, we bring over 25 years of specialized experience in fiber optic cables. This extensive expertise has been critical in supporting the large-scale fiber roll-out for major



ZTO G654E Ultra Low Loss and Large Effective Area Fibre

G. 654 fiber is a single-mode fiber with a pure silica core, designed to minimize loss at a wavelength of 1550 nm. It was developed in the mid-1980s for long-distance



G.654.E Fibre Cable



By deploying G.654.E fibre, the operator can maintain 800 Gb/s transmission over distances exceeding 600 km using only optical amplifiers, completely eliminating the need for regeneration.



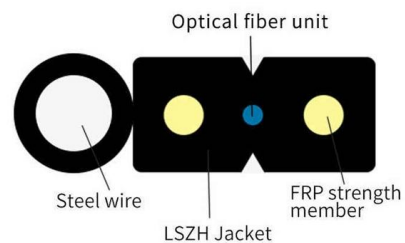
White paper G.654.E Fibre Cable , Solutions de câblage

Although optical fibre is often praised for its virtually unlimited bandwidth, real-world transmission constraints remain. For years, multiplexing multiple high-capacity



Difference between G652 fiber and G654 fiber

In order to meet the needs of long-distance and large-capacity submarine cable communication, G.654 optical fiber has mainly been improved in



STL G654E 125 Fibre

International Standards STL G654E 125 Fibre complies or exceeds the recommendation of ITU-T G.654.E.





What is ITU-T G.654 Fiber

ITU-T Recommend G.654 fiber is a cut-off shifted single-mode optical fiber especially used for high bandwidth long distance transmission. The G.654



Contact Us

For datasheets, pricing, or custom high-speed optical interconnect solutions, please visit:
<https://www.syropy.com.pl>