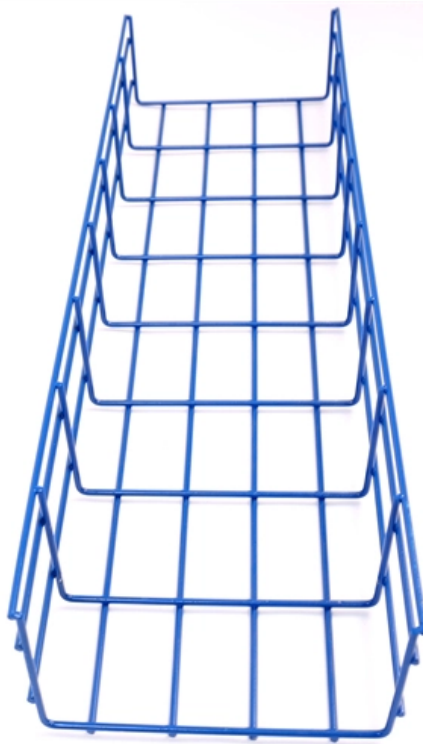


Spanish wall-mounted patch panel with 6 cores





Spanish wall-mounted patch panel with 6 cores

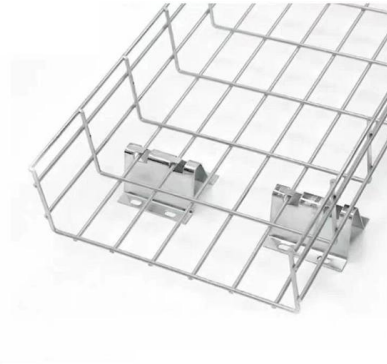


TRENDnet 8-Port Cat6A Shielded Patch Panel, Wall

TRENDnet's 8-Port Cat6A Shielded Wall Mount Patch Panel, model TC-P08C6AS, is ideal for gigabit and 10G Copper Ethernet network applications. This patch panel

Cat6 Patch Panels

\$43.73 In stock Networkx 48 Port Cat 6 Rack Mount Patch Panel - 2U, TAA Compliant, RoHS Compliant TAA Compliant 48 Port CAT6 Patch Panels from



Intellinet Cat6 Wall-mount Patch Panel (560269)

This patch panel offers convenient access to ports and can be mounted to a wall,

Goobay 8 Port CAT 6 Patch Panel / RJ45 Sockets / 250 MHz

Matching. 8-port patch panel With RJ45 sockets For connection of assembled CAT-6 network cables For tool-free mounting Using soldering, screw- and stripping free connection technology (LSA mounting)

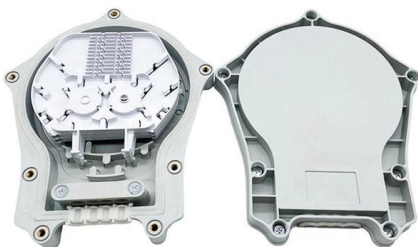


12-Port Cat6A Shielded Wall Mount Patch Panel

TRENDnet's 12-Port Cat6A Shielded Wall Mount Patch Panel, model TC-P12C6AS, is ideal for gigabit and 10G Copper Ethernet network applications. This patch

Network Patch Panel Cat6, Patch Panel 24 Port

buy cost-effective Network Patch Panel Cat6 - Cat6 patch panel 24 port (shielded or unshielded (UTP), Feed-Through or punch down), 1U rack mount. Shop from us



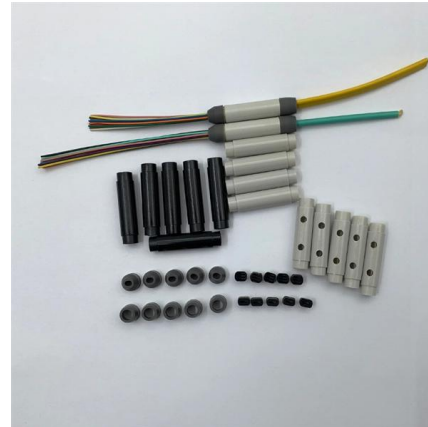
Patch Panels , Leviton Network Solutions

Leviton offers the industry's largest selection of high-quality copper and fiber optic patch panels to support the latest technologies and provide ideal configurations



Rack Mounted & Wall Mounted Fiber Patch Panel SC

Fiber Optic Patch Panels also called fiber optic termination box, can be categorized into Pre-Loaded Fiber Optic Patch Panels and Unloaded patch panels, Most of

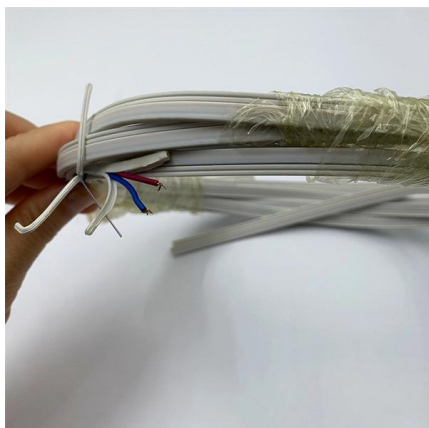


Intellinet Cat6 Wall-mount Patch Panel (560269)

Wall-mount Patch Panel The Intellinet Network Solutions Wall-mount Patch Panel helps maintain the integrity of your data and enables you to quickly change the

Rack Mount Patch Panels including LS, XFM and Denali products.

Discover AFL's rack mount fiber patch panels--featuring Denali High-Density, LS Series, UltraSlim, U Series, and Xpress Fiber Management® (XFM®) options. Engineered for modularity, scalability, and



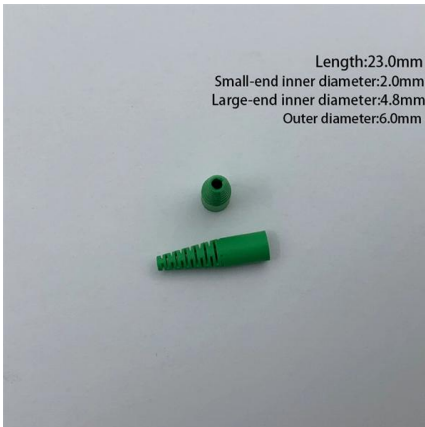
Patch panels Cat5e / Cat6 / Cat6a for sale in different shapes and

With a patch panel you bring structure to your cabling and make maintenance and expansion easier. Both at home and in a professional work environment this is a smart choice. Here you can read



Cat6 Patch Panels

Enabling your company to communicate efficiently at high speed requires a high quality Cat6 Patch Panel. All our Cat6 Panels have been designed and tested to exceed the performance standards



110-Type Patch Panels CAT6 Archives

ICC offers a range of CAT6 Patch Panels, engineered to support high-performance connectivity with PoE++ compatibility. These panels include both wall-mounted and rack-mounted options, available in

Amazon : Wall Mounted Patch Panel

Streamline your cabling with wall-mounted patch panels. Discover compact, space-saving options featuring sturdy metal construction and flexible installation.



6 Cores Wall Mounted Socket Panel

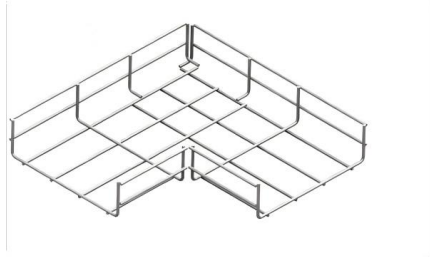
Installed this wall-mounted socket panel for my office network, and it's been a game-changer! It connects smoothly with our Alcatel-Lucent fiber equipment, making everything neat and efficient.





OEM 12 Cores Sc Upc ABS Fiber Patch Panel

Product Description FIBCONET offers wall-mounted and rack-mounted fiber optic patch panels for managing fiber optic cables. These panels are integrated units



Wall Patch Panels , Patch Panel Wall Mounts , CableWholesale

We carry a wide range of patch panel wall mounts that are compatible Cat5 and Cat6 ethernet cables and boast an excellent range of port options. Whether you need a 16- or 48-port patch panel, we're

ICC CAT6 Patch Panel, UL Listed & PoE++ Rated

HIGH-PERFORMANCE CONNECTIVITY: Wall-mounted CAT6 component-rated fixed patch panel with an 89D wall mount bracket, delivering excellent



Wall Mount Fiber Patch Panel, NEMA 3 Rated, Up to 6

Wall Mount Fiber Patch Panel, NEMA 3 Rated, Holds 1 Adapter Panel and 12 Splices, Up to 6 Ports. OC Series Wall Mount Fiber Patch Panels offer the same



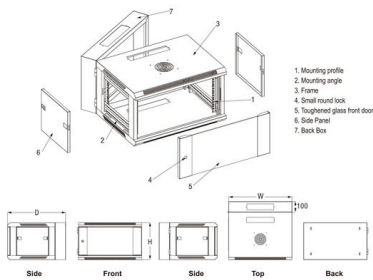
iwillink 12-Port Mini Vertical Cat6 Patch Panel, 10Gbps

Broad Compatibility: Designed for heavy-duty use, this network patch panel supports Cat6 cabling and is backward compatible with Cat5e and Cat5 cables, ensuring



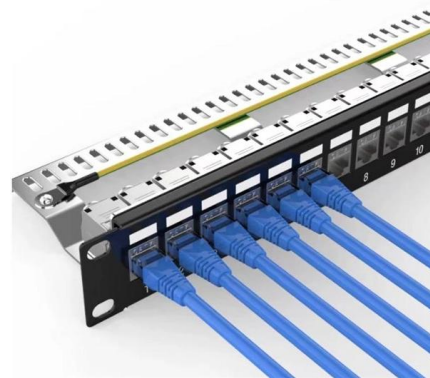
Cat6 Ethernet Wiring , Patch Panels , ShowMeCables

Cat6 Ethernet Patch Panels. Available brands include ECore, ICC, Panduit, and NaviLite. 12- to 96-port options. Available in 1 to 4 RUs. Punchdown and feed-thru options. Vertical panels available. Same



Optical distribution frames and patch panels

Supporting more fiber with lower cost and higher flexibility, Technetix offers a variety of wall, floor and rack-mounted optical distribution frames (ODF) and patch panels.



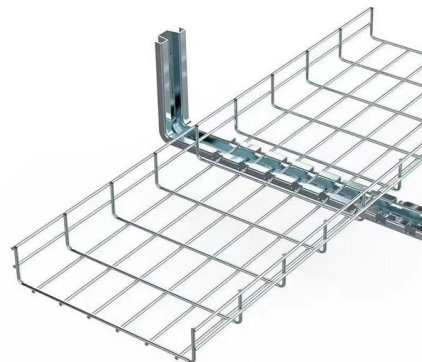
CAT6 Patch Panels, High Density , Primus Cable

The CAT6 Patch Panel, Shielded 48-Port, High Density, 1U Rackmount will maximize networking space. This high-density CAT6 patch panel has flush



Patch Panels , Structured Networking , Magic Patch

Patch panels are the core to any structured cabling system, allowing you to patch between equipment easily. Our range of patch panels are available in a huge



Wall-Mount Panel

The FX UHD and ECX modular platform of panels can be stacked vertically to create an interconnect while the patching spaces can be combined in a horizontal



Serveredge 12 Port CAT6 Surface Mount



Patch Panel

The Serveredge CAT6 Surface Mount Patch Panel is wall mounted with RJ45 jack panels with standard-surpassed transmission performance. It supports high



DP6(TM) Category 6 Punchdown Wall Mount Patch Panel, 12-Port

Shop DP6(TM) Category 6 Punchdown Wall Mount Patch Panel, 12-Port By Panduit (DP12688TGY) At Graybar, Your Trusted Resource For Copper Patch Panels And Other Panduit Products.

High-quality, high-performance data-comm products that

12 Port CAT6 Wall Mount Patch Panel - 1U NP-C612ST-W CAT6 Patch Panels from Networkx® will maximize your network performance and will keep up with even the



Cat 6A Patch Panels , Leviton Network Solutions

Leviton Cat 6A flat and angled patch panels are available in 24 and 48-port varieties, with 110, universal, and QUICKPORT(TM) options.



Contact Us

For datasheets, pricing, or custom high-speed optical interconnect solutions, please visit:

<https://www.syropy.com.pl>