

Spanish base station communication tower





Overview

15 ft) high reinforced concrete freestanding broadcasting tower in Madrid, Spain. It is the central and main transmission node of the terrestrial television and radio networks in the country as well as the station that covers the city and its.



Spanish base station communication tower

What Is a Telecom Base Station and How Does It Work?



A base station (BS)--short for Base Transceiver Station--is a core component of a mobile communication network. It serves as the interface between mobile devices

Torrejón Air Base

Torrejón Air Base (IATA: TOJ, ICAO: LETO) (Base Aérea de Torrejón de Ardoz) is both a major Spanish Air and Space Force base and the co-located



1075KWHH ESS

Torre España in Madrid, Spain

The tower was built in 1982, commemorating the FIFA World Cup celebrated in Spain that year. The building was administered by RTVE until the year 1989, when control over radio and

Category:Communications towers in Spain

Media in category "Communications towers in Spain" The following 7 files are in this category, out of 7 total.



Base transceiver station

A base transceiver station (BTS) or a baseband unit (BBU) is a piece of equipment that facilitates wireless communication between user equipment (UE) and a network. UEs are devices like mobile



Commander, Navy Region Europe, Africa, Central >

COMNAVACT Spain also serves as the commanding officer of Naval Station Rota. The commander reports directly to Commander, Navy Region Europe, Africa



List of Communication towers in Spain

Torrespaña (literally "Spain Tower") is a 231 m (757.87 ft) steel-and-concrete television tower located in Madrid, Spain. National terrestrial television channels RTVE, Telecinco and Antena 3, as well as the



Naval Station Rota

Naval Station Rota, also known as NAVSTA Rota (IATA: ROZ, ICAO: LERT) (Spanish: Base Naval de Rota), is a Spanish naval base, that is jointly used by



What is a base station?

In telecommunications, a base station is a fixed transceiver that is the main communication point for one or more wireless mobile client devices.

The secret of the American Tower

It is now remotely controlled by the US Naval Communication Station in Rota. The operation of the installation was carried out by a section of 20 or so



High-quality ceramic ferrule



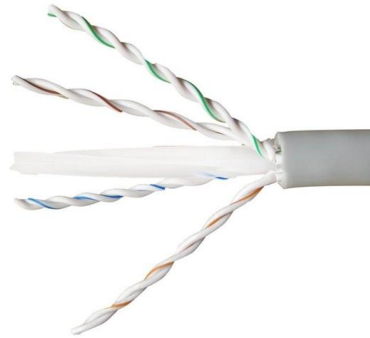
Welcome to Naval Station Rota

Welcome to Naval Station Rota Welcome to Naval Station Rota, Spain - the Gateway to the Mediterranean Installation Information NAVSTA Rota

Types of Base Stations



Unlike base stations, which deal with direct communications between mobile devices and towers, Mobile Switching Centers (MSCs) oversee the routing



What Is A Base Station?

The base station acts as the primary hub, transmitting messages out to mobile units and receiving their responses, which ensures clear and reliable

Collserola Tower

The Collserola Tower is a Telecommunications Tower located in Pico de la Vilana, near the Tibidabo, in the municipality of Barcelona



What is Telecommunication Base Station , China Hop

Most base stations still do not require specialized tower construction, they can be built directly on existing rooftops. Usually, when you see a row of vertically



Breaking Down Base Stations - A Guide to Cellular Sites

What are the main components of a telecom tower? The technology that makes up most telecom tower sites can be boiled down to three main



A Field Guide To The North American Communications

Each antenna is connected to the base station by several cables. Monopole towers have a conduit down the center to house the cables, but on a

OpenCellID

OpenCellID is the largest Open Database of Cell Towers & their locations. You can geolocate IoT & Mobile devices without GPS, explore Mobile Operator coverage and more!



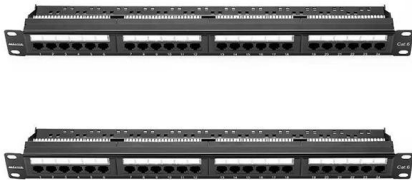
Montjuïc Communications Tower

The Montjuïc Communications Tower (Catalan: Torre de Comunicacions de Montjuïc, IPA: ['tor? ð? kumunik?si'onz ð? mun?u'ik]), popularly known as Torre Calatrava and Torre Telefónica, is a



Torrespaña

National and regional television channels and radio stations broadcast from there. The tower, currently owned by Cellnex, is located in a depression at the Salamanca district near the M30 highway.



Torrespaña _ AcademiaLab

Torrespaña is 220 meters high (232 meters with the communications antenna). Construction began on February 17, 1981, finishing in thirteen months, then costing 3,500 million pesetas. The inauguration

Montjuic Communications Tower , Santiago Calatrava

Montjuic Communications Tower Like Prometheus brought the fire with a torch, Santiago Calatrava brought telecommunication via a like-torch tower. The



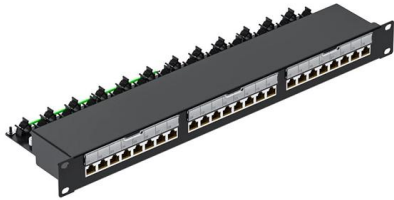
Madrid's 30-year-old giant lollipop , Spain , EL PAÍS

It is the main radio and television signal emitter center for the



Cellular Base Stations

The base station, a wireless system, uses microwave radio communication. It is composed of several antennas mounted on a tower and a building with electronics in it at the base.



Torre España in Madrid, Spain

Torre España (literally Spain Tower) is a 231-meters steel-and-concrete television tower located in Madrid, Spain. National terrestrial television channels RTVE, Telecinco and Antena 3, as

Contact Us

For datasheets, pricing, or custom high-speed optical interconnect solutions, please visit:
<https://www.syropy.com.pl>