

# **Spanish DAC High-Speed Cable QSFP28**





## Spanish DAC High-Speed Cable QSFP28

---

### QSFP Cables Explained 2025: Types, DAC vs AOC,



Learn about QSFP cables: QSFP+, QSFP28, QSFP56, QSFP-DD. Compare DAC vs AOC, speeds, lengths, and use cases in data centers. Includes

### CURDP34\_CZZ05\_EF

The cable assembly's 38 position printed circuit card has been designed to accommodate not only the industry (SFF) defined, but also the higher-bandwidth signal integrity requirements associated with



### QSFP28 Direct Attach Cables Datasheet

100 Gigabit Passive Small Form-Factor Cables Allied Telesis QSFP28 small form-factor direct attach cables are suitable for in-rack connections between QSFP28 ports, on all QSFP28 compatible



### QSFP28 Passive Direct Attach Copper (DAC) Cable Assemblies

By incorporating QSFP28 Passive DAC Cable Assemblies into the physical infrastructure, businesses can achieve 100 Gigabit performance port-to-port without additional signal processing or conversion,



### QSFP28 100G Direct Attach Cable

LR-LINK 100G QSFP28 direct attach passive copper cable for 100Gb ethernet, this DAC QSFP28 assembly features low cost, low power consumption and high



### 100G Direct Attach Cable

QSFP28 direct attach cable with a 100 Gbps max data rate.



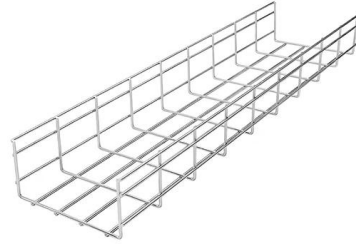
### QSFP28 100G DAC Cable 2m

The 100G QSFP28 2m DAC cable is an efficient and cost-effective solution for short-distance data transmission. It is ideal for use in modern data centers and server rooms.



## 100G QSFP28 DAC Cable, 100G High Speed Cable 1

About this item 100G High Speed: DAC high speed cable is fully compatible, plug and play, 100G high speed optical cable, dedicated to stacking and cascading



## CURDP34\_CZZ05\_EF

QSFP28 DAC Cable PRODUCT FIT QSFP28 DAC Cable support EDR (4x28Gb/s per channel and Ethernet 100G BASE-CR) specifications and downward compatible with the IEEE 802.3bj (40Gb/s),

## Cables DAC/AOC 100G QSFP28 , Cables Twinax

Cable DAC QSFP28 FS, DAC pasivo/activo de 0.5m a 10m y cable QSFP28 AOC de 1m a 100m FS, alternativa rentable para enlaces cortos Ethernet 100G entre puertos QSFP+ de switches. Obtén tus



## 100G DAC Cable , QSFP28 Direct Attach Copper Cable

100G DAC Cables (QSFP28) are cost-effective, pre-terminated twinax copper assemblies designed for short-reach high-speed interconnects in modern data



## High-Speed 100G QSFP28 DAC Cable

The 100G QSFP28 to QSFP28 DAC Cable is a reliable, low-cost solution for short-distance, high-speed connections between network equipment.



## QSFP28 to 4 SFP28 100G/25G Breakout Direct Attach Copper Cables

Regional Availability - Global Siemon QSFP28 100G passive breakout DAC cables allow users to separate QSFP28 100G ports to four individual single lane SFP28 25G ports. They are designed to

## High-Speed Interconnect Technology:

This article provides an in-depth overview of SFP28, SFP56, QSFP28, QSFP56, QSFP-DD, OSFP, as well as DAC, ACC, and AEC.



LoRawan outdoor base station



## QSFP28 100G Direct Attach Copper Cables

Siemon QSFP28 100G passive Direct Attach Copper Cable assemblies are designed to exceed industry standard performance offering a cost-effective, low latency, low-power option for high-speed data



## 100G QSFP28 DAC , Direct Attach Cables (DACs)

100G QSFP28 DAC Our 100G QSFP28 DAC cable is a network cable that is popular among network builders because of its high speed, low power consumption, and



### SUPPORTS

#### DIN RAIL INSTALLATION



### Get reliable 100G QSFP28 cables from US stock with

These are the fastest cables available for QSFP28 format, reaching up to 28G per channel (112G aggregate). Both passive copper DAC and fiber active AOC cables are available. Such cables are

### 100G QSFP28 DAC: Low-Cost, High-Speed Direct

100G QSFP28 Direct Attach Cable Description Innptical's IN-DAC-100G-Dxxx QSFP28 passive copper cable assembly feature eight differential copper pairs,



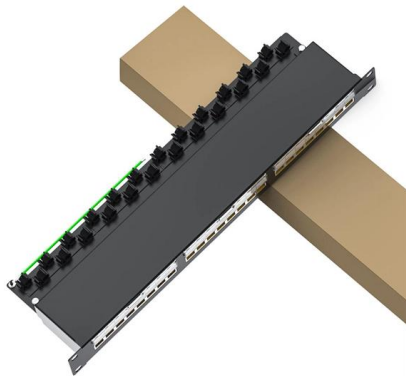
### Cable 100G QSFP28 DAC, 5 m

Los cables QSFP28 100G DAC Digitus® representan la conexión ideal entre conmutadores en el ámbito del Backbone. Los módulos de cable de cobre 100G QSFP28 a QSFP28 Direct Attached Cable



### **100G QSFP28 Passive DAC Cables 1m 2m 3m 5m**

COMNEN's 100G QSFP28 Passive DAC (Direct Attach Copper) Cables provide high-performance, cost-effective interconnect solutions for data centers, high-performance computing (HPC), and enterprise



### **100G QSFP28 Passive Direct Attach Copper Twinax Cable**

Description FS 100G QSFP28 to QSFP28 Passive Copper Cable assemblies are high performance, cost effective I/O solutions for LAN, HPC and SAN. The high speed cable assemblies

### **Cable DAC HUAWEI QSFP28 100G 1m 02311KNW -**

Parte: 02311KNW Cable DAC HUAWEI QSFP28 100G 1m. El cable DAC HUAWEI QSFP28 100G, modelo 02311KNW, es una solución de interconexión de alta



### **QSFP28 Direct Attach Cables (100G DAC)**

Amphenol QSFP28 Cables (100G Ethernet QSFP28 DAC Cables) up to 5m (16.4') In-Stock Today at Cables on Demand. Our leadership in QSFP interconnects





### Passive Direct Attach Cable

As next gen data centers deploy faster speed in Near zero power consumption and no heat generated a tighter space, they need high performance cables that reduce power consumption, provide reliable



### Introduction to 100G QSFP28 DAC Cable

QSFP28 DAC stands for 100G QSFP28 direct attach copper cable. 100G QSFP28 DAC is also called 100G QSFP DAC or 100G QSFP+ Copper

### 100G QSFP28 DAC (Direct Attach Copper Cable)

Offered in a broad range of wire gages (from 30AWG through 26AWG), this 100G copper cable assembly features low insertion loss and low cross talk. QSFP28 form factors can be used with



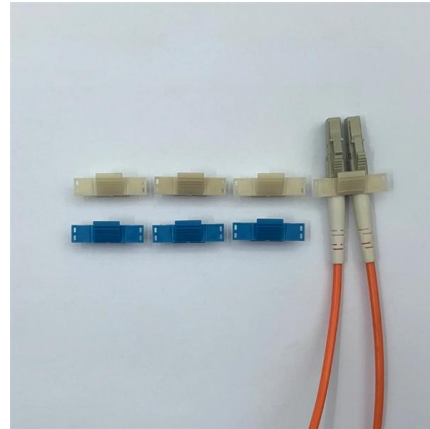
### QSFP28 DAC Cable

Supports current 10 Gbps Ethernet, 14 Gbps (FDR) InfiniBand and 16 Gbps Fibre Channel applications.



## SFP28 Cables o QSFP28 Cables for Sale , Cables on

Perfect for 25-Gigabit Ethernet links via our SFP28 DAC Cables, 100-Gigabit Ethernet links via our QSFP28 DAC Cables or for 25G-100G link aggregation via



### QSFP28 DAC Cable

HIGH SPEED QSFP28 DAC Cable Proven 28 Gbps data rate with potential up to 40 Gbps per lane Meets or exceeds past requirements for 100 Gigabit Ethernet and InfiniBand 100 Gigabit (EDR)



## Contact Us

---

For datasheets, pricing, or custom high-speed optical interconnect solutions, please visit:  
<https://www.syropy.com.pl>