

Slovenia rack DC power distribution unit is heat resistant





Slovenia rack DC power distribution unit is heat resistant

DC power distribution

Actually, the most foreseeable scenario is a combination of AC and DC, with DC helping to manage high energy demand through local DC microgrids. This trend report briefly describes the current



DC power distribution

DC/DC converters allow the voltage of the MVDC outside the house to be matched to the LVDC inside the house, and the power is transferred to the DC appliances (induction cooker, heat pump, air



ASHRAE TC9.9 Data Center Power Equipment Thermal Guidelines

This paper discusses how changes to the data center thermal environment may affect power distribution equipment. This paper also provides an overview of data center power distribution and

Rack-mount power distribution unit, Rack-mount PDU

Find your rack-mount power distribution unit easily amongst the 48 products from the leading brands (iDRC, Maruson Technology, CAEN,) on DirectIndustry, the



Power Solutions Overview , nVent SCHROFF

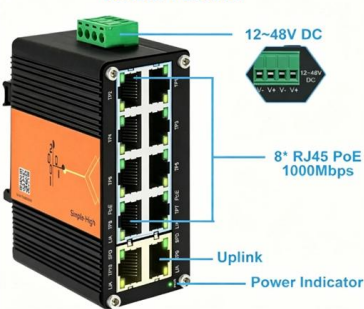
Effective power management is critical to ensuring the reliability and efficiency of your advanced electronics systems. nVent SCHROFF's expert teams specialize in optimizing power distribution and

Build Your Custom Rack Power Distribution Unit (PDU) for Your Data Center

Build your Custom Rack Power Distribution System for your specific data center needs to help optimize power, energy, and



10 Ports PoE Switch 12~48V DC
Booster Function



DC power in the racks

DC racks have a long history- and if you are not currently using DC power distribution, it is pretty certain that you have encountered it in the past, and may

Power distribution



With the compact PDU, any IT rack is equipped with a professional power distribution system. Tool-free installation in the zero-U space of the IT server racks. The



Military Power Distribution Units / Mil-Spec PDU

Reliable military power distribution units (PDUs) offer rugged, tactical solutions for efficient power management in demanding environments.



Bridging the present to the future: Rack-level DC power distribution

Rack-level DC power reduces energy losses, boosts efficiency, and paves the way for environmentally responsible, high-density data centers of tomorrow.



DC Power Distribution Unit

The PDU series is designed to meet the needs of power distribution units of telecom access sites. It comes with an integrated controller that enables customer to read tenant-wise energy statistics as





Rack Mount PDU: Power Distribution Solutions

Rack Power Distribution Units (rPDUs) are the last link in the power chain and ensure delivery of critical power to IT loads. The rPDU is designed to distribute

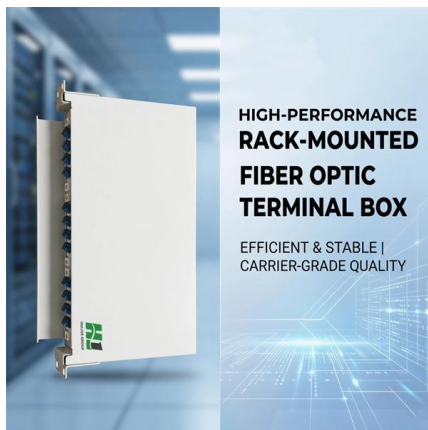


Data Center Power Design: The Electrifying Guide

Unlock the secrets of efficient data center power design in our electrifying 2024 guide. ENCOR is a leading data center advisor and broker.

48V DC Rack Power Distribution Units (-48VDC PDU)

Remote Power Management for Your Telecommunications Network To minimize the impact of locked-up routers, servers and other network devices on business-critical networks, many CLECs, ILECs, ISPs



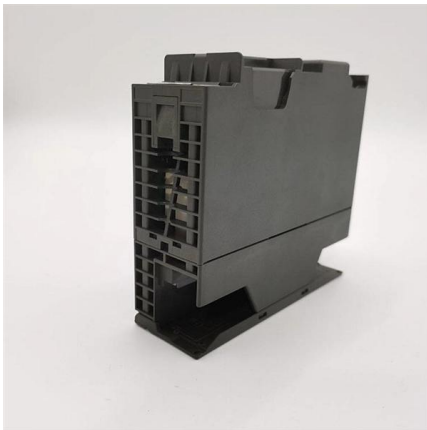
Why 48V DC Power Distribution Demands Rack

Why 48V DC Power Distribution Demands Rack-Mounted Liquid-Cooled Resistors in Modern Data Centers Insights By Eak Resistors Published



DC power in the racks

Why not convert the AC supply to DC power in one go, and then distribute DC voltages to the racks? That could eliminate inefficiencies, and potentially remove

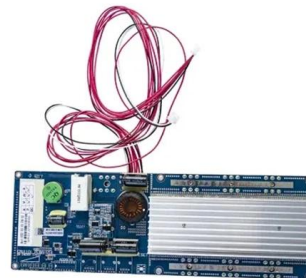


800 VDC in data centers: Why liquid cooling is now mandatory

In initial deployments, the power sidecars in the whitespace will need to be considered from a cooling perspective. First deployments will be air-cooled, and with high power ratings, they

Rack Power Distribution Unit (rPDU)

Rack Power Distribution Unit (rPDU) Every rPDU (Rack Power Distribution Unit) released by Delta is a result of our total commitment to engineering the most efficient and reliable power solutions on the



Power Distribution in Data Centers

The impact of these trends on data center electrical design is obvious: the need for flexible, adaptable, electrical power distribution and monitoring systems.



Rack Mount PDU: Power Distribution Solutions Explained

Rack Power Distribution Units (rPDUs) are the last link in the power chain and ensure delivery of critical power to IT loads. The rPDU is designed to distribute power to all types of IT equipment within the



Addressing challenges in data-center power delivery with 800V high

While 48V infrastructures were "the next big challenge" just a few years ago, using 48V distribution with a 1MW rack would require almost 450lbs of copper to maintain distribution losses - an unsustainable

What is a power distribution unit (PDU)?

Power distribution units are designed to forward alternating current (AC) from a power source to multiple devices in the data center. PDUs can be portable, mounted on the data center



AC Versus DC Power Distribution

Although DC power distribution simplifies paralleling of sources, the argument that DC systems are more reliable because they have fewer conversion stages is somewhat misleading.



Data Center Power Consumption Per Rack , Server

This is why it is essential to ensure that the available power distribution unit can generate the required energy to feed all devices, considering



Future Engery

Currently, Kaori develops In-Rack CDU (Direct-to-Chip (D2C) Cold Plate In-Rack CDU), which is capable of 80 kW heat dissipating from the cabinet.

Rackmount Power Supply: A Comprehensive Review

The rackmount power supply is a core component of electronic systems and automatic test equipment (ATE). These units are designed to be



Data center power distribution , Reliable solutions , Danfoss

Danfoss power distribution equipment for data centers facilitates ideal thermal conditions around server installations while keeping power consumption and CO2 emissions at a minimum.



DC Power Distribution Unit

Description The PDU series is designed to meet the needs of power distribution units of telecom access sites. It comes with an integrated controller that enables customer to read tenant-wise energy

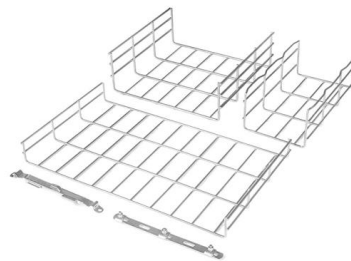


Power Architecture Evolution in Data Centers

For this reason, the conventional power distribution architecture inside the rack, based on a 48V intermediate bus generated from the AC main as standardized by the Open Compute Project (OCP),

ASHRAE TC9.9 Data Center Power Equipment Thermal Guidelines

based telecom UPS units are designed to provide 8 hours or more of run time. Flywheel and super-capacitor based UPS units provide power for a duration of 15 to 30 seconds to a few minutes which



Contact Us

For datasheets, pricing, or custom high-speed optical interconnect solutions, please visit:
<https://www.syropy.com.pl>