

Slovakia Data Center Cold Aisle 2U





Slovakia Data Center Cold Aisle 2U

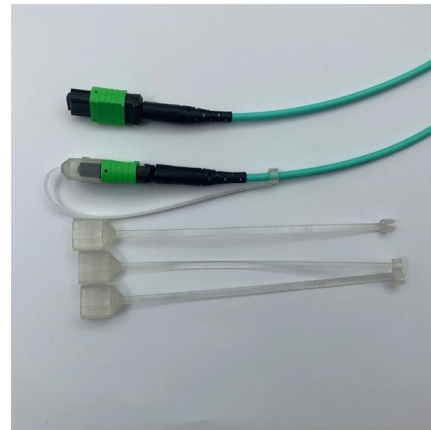


Hot Cold Aisle Containment

Data Center Resources is the manufacturer of Cool Shield hot cold aisle containment systems. Learn about preferred solutions and get your quote today!

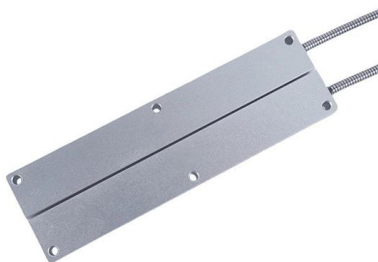
Cold Aisle Containment: Complete Implementation Guide for Data Center

Complete cold aisle containment guide for data centers. Learn CAC benefits, implementation steps, and achieve 35% cooling cost reduction.



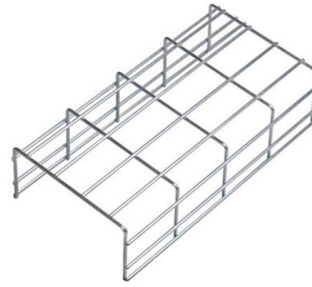
OPTIMIZED ENERGY EFFICIENCY WITH CONTROLLED COLD AISLE

Many have already implemented the basic separation of cold air from warm air with dummy (blanking) panels, bushings for cable entry, cold aisle containment, etc. The data center can be further



Blanking Panel

Designed to effectively seal openings in IT equipment cabinets and control airflow for optimized cooling effectiveness. The HotLok® Blanking Panel reduces hot spots



What is the standard distance between Hot Aisles and between Cold Aisle

Minimum of 3 feet for the hot aisle and 4 feet for the cold aisle. An effective data center floor plan should be deployed in row pairs, using the basic spacing pitches.

Optimizing Data Center Cooling: The Power Of Hot And

Discover how to optimize your data center cooling system with hot and cold aisle containment. Learn about the assessment, design, installation, and



Hot vs Cold Aisle Containment: 40% Cooling Savings

Blog / Data Center Infrastructure Hot Meets Cold: The Epic Showdown Cooling Your Data Center Dive into the epic thermal showdown





Hot Aisle vs Cold Aisle Containment Explained (Data Center Cooling)

In this guide, we'll break down how hot aisle and cold aisle configurations work, what containment systems do, and why airflow management is critical in today's high-density data centers.



The Basics of Hot Aisle, Cold Aisle Data Center Configurations

Though hot aisle, cold aisle configurations have a number of variations, at their most simplest it consists of server racks in rows with cold air intakes facing one way and hot air exhausts

Aisle Containment , Vertiv Data Center Racks

Find out how to improve your data center infrastructure efficiency, using the cold aisle containment or hot aisle containment solutions from Vertiv.



Optimizing Data Center Cooling for Energy Efficiency

Disadvantages of Cold Aisle Containment Hotter Overall Room Temperature: The data center space outside the contained aisles becomes the



Hot Aisle vs. Cold Aisle Containment for Data Centers

Involving data centers, one of the biggest concerns faced is airflow management. Temperature and humidity need to be carefully controlled to protect

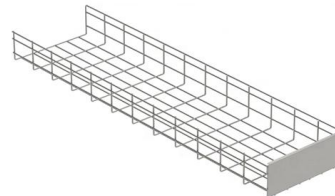


Data Center Hot and Cold Aisles

Hot and cold aisles are a way to control airflow in your data center and increase efficiency. DataSpan shows you how it works. Explore our products

AISLE CONTAINMENT

PRODUCT OVERVIEW ArcTiv Aisle Containment Systems provide efficient hot and cold air isolation for data centers and server rooms. The modular design is simple to configure and deploy while providing



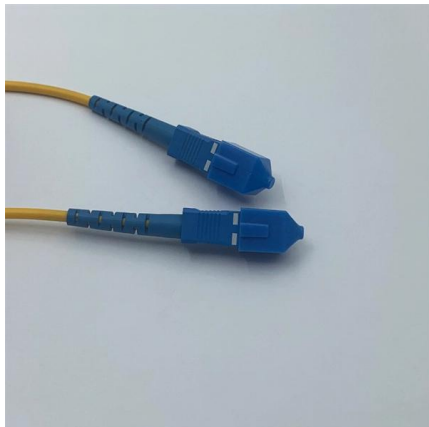
Cold Aisle Containment: Complete Implementation Guide for Data

Complete cold aisle containment guide for data centers. Learn CAC benefits, implementation steps, and achieve 35% cooling cost reduction.



Cut Cooling Costs with Hot & Cold Aisle Containment , STULZ

Discover how hot and cold aisle containment improves cooling efficiency, cuts energy costs, and supports uptime in modern data centres.



Cold Aisle Containment: The Ultimate Guide To

Data Centre professionals see cold aisle containment as a key strategy to improve cooling systems and effectively manage airflow. This comprehensive guide

Move to a Hot Aisle/Cold Aisle Layout

A Time-tested Technique The hot aisle /cold aisle data center layout was originated by IBM in 1992 and it is one of the oldest ways to save energy in the data center.



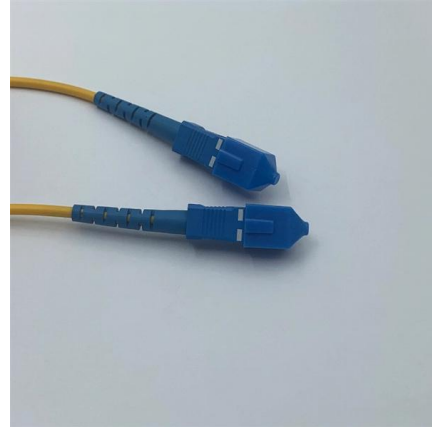
Hot Aisle Containment vs. Cold Aisle Containment: How

When applied to hot aisle containment or cold aisle containment, DCIM can provide valuable insights and facilitate effective management. With



DC Digitalis

At DC Digitalis, you can choose exactly what you need, whether you are a large company looking to rent data centre space, or you just want to run a project with one server.



Cold & Hot Aisle Containment For Data Center Efficiency

Learn how cold and hot aisle containment improves airflow, reduces energy use, and boosts reliability in data centers. Backed by CFD insights from

Server Room Containment Systems , Hot & Cold Aisle Containment in Data

Whether you need cold aisle containment, hot aisle containment, or a hybrid approach, our expert team ensures maximum thermal efficiency and reduced PUE (Power Usage Effectiveness). In modern



Data Centre Cooling: Hot Aisle and Cold Aisle Design

Here's a brief overview of how this arrangement works: Cold Aisle: In the cold aisle, the fronts of all server racks face each other. Servers in this aisle draw in cool air



Containment Strategies in High Density Data Centers

Last week we continued our article series on the challenges of keeping IT equipment cool in high density environments. This week, we outline some



5-INCH COLOR TOUCHSCREEN

Intuitive operation, easily accessible with just one touch



Server Hosting Rack Data Center Aisle Hot / Cold

The data center by Bolein is a modular solution by server hosting rack designed for versatility in data centers. Whether it functions individually or in collaboration with

Cold Aisle Containment in Data Centers , Subzero

Minimize your data center's footprint, establish optimal operating efficiencies and save money with cold aisle containment. Learn more here!



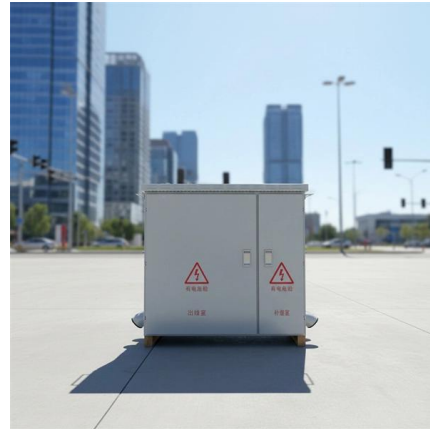
What are hot and cold aisles in the data center?

Hot and cold aisles in the data center are part of an energy-efficient



Hot Aisle vs Cold Aisle in Data Centers: Technical

Data centers are ovens if left unmanaged. Hundreds, sometimes thousands of servers pump out heat -- and your HVAC doesn't care about waste



Cold Aisle Containment

Modular designed frame made of cold roll steel, with thickness $\geq 1.2\text{mm}$ to ensure the firmness and security. Aisle containment in the data center requires that



Slovakia Data Centers

Data Centers in Slovakia - List of Colocation and Cloud data facilities in Slovakia. Get Quotes and find Specs, Photos, Videos etc.



Blanking Panel with Temperature Strip - 2U

The state-of-the-art technology, designed for both 1U and 2U openings, controls airflow for optimized cooling effectiveness. HotLok Blanking Panel with



Contact Us

For datasheets, pricing, or custom high-speed optical interconnect solutions, please visit:

<https://www.syropy.com.pl>