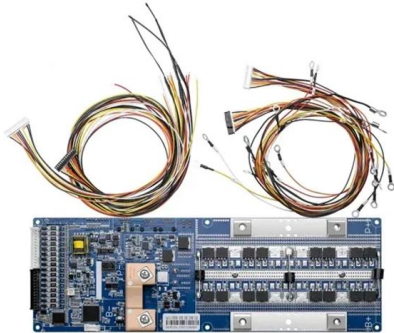


Singapore SFF optical module connector





Singapore SFF optical module connector

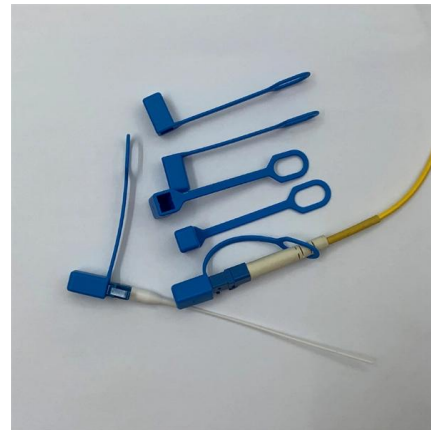


JT-COM 2PCS SC SFP Single Module Gigabit SC Connector Fiber

JT-COM 2PCS SC SFP Single Module Gigabit SC Connector Fiber Transceiver Compatible with Mikrotik Cisco Switch 5 Year Warranty

ATZ FO-SFP-SMBDxxK-LC/A

20KM/40KM/80KM SFP Transceiver :1.25G SFP BiDi TX1310nm/1490nm RX1550nm SM/LC Connector/DDM Function/Compatible with Cisco.



Fast Ethernet SFF Transceivers

Small form factor (SFF) optical transceivers designed for multimode fiber featuring either LC duplex or MT-RJ connector.

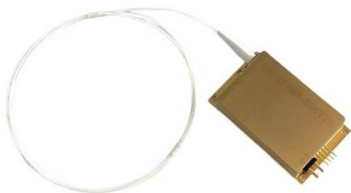
Compact SFF Optical Modules: Reliability, Density & Efficiency for

Discover how soldered SFF (Small Form-Factor) optical modules deliver high reliability, dense port integration and cost-efficient connectivity for OEMs in industrial, telecom and embedded



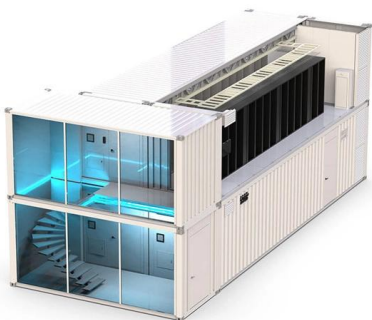
Fiber Optic Connectors , Anixter Singapore

Anixter is your source for Fiber Optic Connectors products.



25G Optical Transceiver , Zutto ZT25SP28-300M001 Singapore

Featuring a compact, hot-pluggable design with a duplex LC connector, it ensures reliable data transmission up to 300m over single-mode fiber. The module's compliance with SFF-8431 and SFF



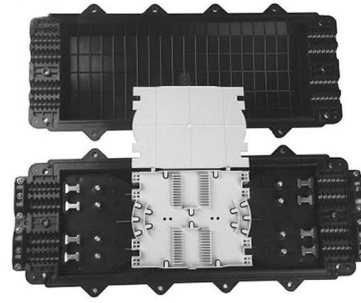
Unlocking the Secrets of Fiber SFP Connectors: A

Discover the ins and outs of fiber SFP connectors with this comprehensive guide. Explore everything from different wavelengths to gigabit



SFF-8402

SFP2 connectors, defined in SFF-TA-1031, feature enhancements that enable use at higher data rates compared to connectors defined in SFF-8071. SFP2 connectors are backwards compatible to SFP+



Singapore Standards

The physical requirements of an optical transceiver that will enable mechanical interchangeability of transceivers complying with this standard both at the printed circuit wiring board and for any panel

Introduction to SFF Transceivers

With the continuous development of 5G communication technology, 100G modules are gradually becoming popular. We know that there are many



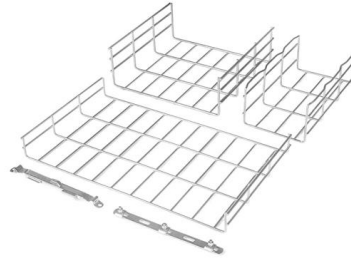
SFP Optical Module 1.25G Single Optical Fiber20km

SFP Optical Module 1.25G Single Optical Fiber 20km SFP-1.25G-20KM-TX/RX This is a standard SFP optical module. It uses a single mode optical fiber and the



Fiber Optic Connectors , Products , Amphenol

The 109 connector line meets or exceeds the pertinent requirements of SMPTE standard 358M on harsh environment multi-channel fiber optic connectors suitable for deployment in demanding outdoor

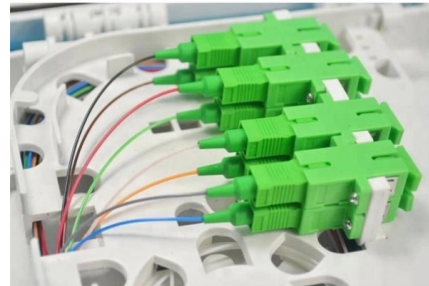


SFF-8679 Specification for QSFP+ 4X Hardware and Electrical

ABSTRACT: This specification defines the contact pads, the electrical, power supply, ESD and thermal characteristics of the pluggable QSFP+ module or cable plug.

Cisco GLC-SX-MM 1000BASE-SX SFP Transceiver

FS Cisco compatible GLC-SX-MM SFP optical transceiver, up to 550m link lengths over multimode fibre (MMF), applied for Gigabit Ethernet communication links,



1/2/4G Transceiver Modules , Optical Transceivers

FS provides 1/2/4G transceivers modules in SFP form factor, supporting transmission distances from 100m to 120km over SMF/MMF fiber and enabling low power and cost-effective connectivity



SFP modules

The small form-factor plug-in module provides a fiber optic interface with a data transmission speed of 100 Mbps with a wavelength of 1310 nm (long).



Customized 1000BASE-SX SFP 850nm 550m DOM

Tech Support 1000BASE-SX SFP Transceiver Module (MMF, 850nm, 550m, LC) 1000BASE-SX compatible SFP transceiver supports up to 550m link lengths over

SFP Transceivers

GLC FE 100FX is Cisco SFP fiber optic transceiver module designed for 100Base-X, GLC FE 100FX operate via multimode optical fiber and its working distance is up to 2km max. GLC FE 100FX



2 Gbit/s small form factor fiber-optic transceiver for single mode

Small form factor (SFF) optical transceivers are expected to be commonly used in the near future for high-end (high bit-rate, single mode) applications as well as for low-cost applications. SFF optical



SFF SFP Transceiver Explained: Standards, Types & Uses

Most SFF optical modules use LC or SC fiber connectors for duplex fiber links. The connector type depends on the hardware design and the fiber infrastructure used in the network.

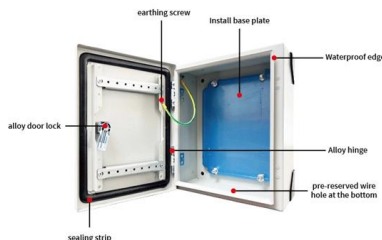


Mini SFP Optical Transceiver Overview: A Beginner Guide

10Gbps Mini SFP transceiver Conclusion The above is a Mini SFP optical transceiver overview from the definition, the difference between Mini SFP and SFP transceiver, application, etc. I

What is SFP: SFP Meaning, SFP Types, SFP Port

What is an SFP module? This article will give a comprehensive introduction to the SFP module, including SFP meaning, SFP port, SFP types, and how to choose



SFP Optical Module 1.25G Single Optical Fiber 20km

This is a standard SFP optical module. It uses a single mode optical fiber and the speed rate can up to 1.25Gbps, transmission distance up to 20 km.



Generic Compatible 100GBASE-LR4 QSFP28 DOM Optical

This transceiver is compliant with IEEE 802.3 100GBASE-LR4, SFF-8665 and SFF-8636 standards. Digital diagnostics functions are also available via the I2C interface, as specified by the QSFP28



Contact Us

For datasheets, pricing, or custom high-speed optical interconnect solutions, please visit:
<https://www.syropy.com.pl>