

Simultaneous coefficient of terminal distribution box





Simultaneous coefficient of terminal distribution box



Understanding Distribution Boxes:A Comprehensive Guide

Understanding its significance, this article covers what a distribution box is, how it functions, its structure, the various types available, and how it

Distribution Box vs Control Box vs Junction Box: Key

Learn the differences between distribution boxes, control boxes, and junction boxes. Discover their functions, applications, and how E-abel provides



TECHNICAL SPECIFICATION I.R.O. 63,100,160 & 315 KVA

For temperature rise test, a distribution box with all assembly of Isolator / Porcelain cutouts shall be kept in an enclosure such that the temperature outside the box shall be maintained at 50 ° C.

Electrical Distribution Fundamentals Design Guide Data Bulletin

Although this basic function has not changed, the complexity of the loads themselves, along with today's reliability and efficiency requirements, makes its realization more complex. This



fan-powered terminal units

Fan-powered terminal units have been a key component of many building HVAC systems over the years, as they are largely responsible for helping move air through a building to occupant spaces.



Distribution Box and Selection Guide

Distribution Box Selection Guide This guide provides information on how to select the appropriate Distribution Box for Electric project. If you have any



Dimensional criteria for the design of enclosures

It determines, in function of the simultaneous operation of the equipment, the value of the current that must be considered for sizing the electrical conductors.





Basic knowledge of distribution cabinet and distribution box

Function: it is mainly used to distribute energy, distribute the main power supply to each power branch switch, and connect and disconnect the branch power supply

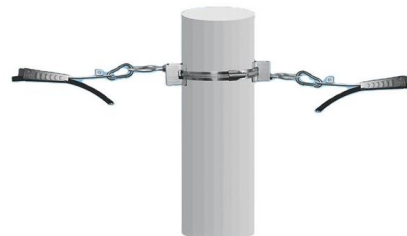


DISTRIBUTION BOX

2.2 The boxes should be suitable for 1/ 3-phase (4 cores) inputs & provision for 4/9 nos. of 3-phase or 4/9/18 nos. of 1-phase outputs. Bus bars should be with a continuous pair of contact bars with colour

A Definitive Guide To Distribution Boxes

The distribution box acts as the center of power distribution, distributing electricity to all connected devices. A distribution box, also known as a distribution board, panel board, breaker



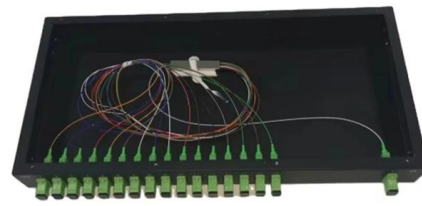
Understanding Distribution Boxes: Your Guide to Power

Weatherproof Distribution Boxes These serve specific outdoor purposes, with rain, dust, and extreme temperatures sealed shut, protecting any



Complete Guide For Distribution Boxes Types

Distribution boxes, also known as electrical distribution boards or panels, are pivotal components in electrical systems, ensuring the safe and organized distribution of



Ordering information

NO.	1	2	3	4
Model	P4001	P4002	P1204	P1208
Product name	Patch Panel	Patch Panel	Patch Panel	Patch Panel
Illustration				
WU	1	2	3	4
Maximum number of cores	96	192	288	384
Product size (including modules and accessories)	482.0*206.7*43.3mm	482.0*206.7*86.3mm	482.0*206.7*131.3mm	482.0*206.7*177.3mm
Standard color code	RAL9005	RAL9005	RAL9005	RAL9005

Terminal boxes , Junction boxes , Ex , Ex e , Ex d , ATEX

We offer bespoke, custom-made terminal boxes and terminal box combinations, as well as standard products with short delivery times. Our products are certified for installation technologies all over the

The Meaning and Function of Primary, Secondary, and Tertiary

The terms primary, secondary, and tertiary distribution boxes are relative. Let's make an example for clarity: A newly constructed residential area introduces a 10kV power line to a substation. From the



Simultaneous siting and sizing of Soft Open Points and

In this section, the MISOCP model for simultaneous sites and sizes of SOPs and the allocation of tie switches is applied to a distribution network. The



TERMINAL UNIT a2 ENGINEERING

Types of Air Terminal Units & Style of Space Air terminal units can be considered as a local air handling device for individual zones within a building. The air terminal unit manages supply air from a central

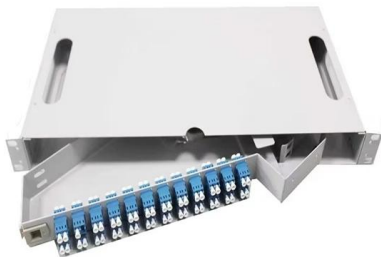


Factor of simultaneity according to circuit function

Modbus over serial line is today one of the most stable communication mean in the Electrical Distribution environment, and compatible with most of 3d party devices.

How to Choose a Transformer for a Shopping Mall?

Other loads are relatively scattered, and only the power meter is installed in the terminal distribution box, so the operation load record takes the



Microsoft Word

OVERVIEW The control of airflow rate in VAV systems is important for several reasons, including acoustics, ventilation, energy management and occupant comfort. Most VAV terminals today are



Sizing large J-box containing distribution blocks

I would still like to know how to add them to a box calculation for possible future applications that could except them. Even with another type of splicing device in place of the block, I

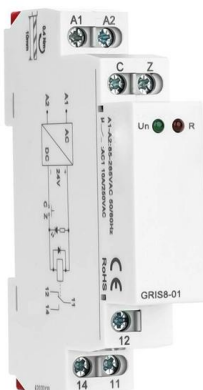


Distribution Automation Handbook

The horizontal communication between feeder terminals in each cubicle provides the possibility for station level automation and gateway connections to upper level systems for complete primary

How to Choose the Right Distribution Board , Axiom Controls

Step-by-step guide to selecting the right distribution board for your electrical system, covering load capacity, protection features, safety, and applications.



What Is the Difference Between a Terminal Box and a Distribution Box

Conclusion In conclusion, the differences between a terminal box and a distribution box are significant and essential to understand in the context of electrical systems. While both



Bus Bars vs. Terminal Blocks: The Ultimate Guide to

Comprehensive guide comparing bus bars and terminal blocks for power distribution. Learn about their features, applications, pros and cons to

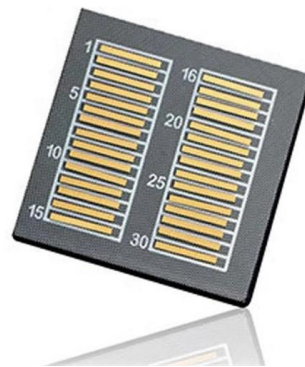


What the simultaneity factor is and how this is calculated

What is the simultaneity factor? The simultaneity factor is a simpler formula than it appears. You have to take these two aspects: 1. The maximum

Optimal power flow and computer-based analysis of a simultaneous

Optimal power flow for combined AC and multi-terminal HVDC grids based on VSC converters
The possibility of enhanced power transfer in a multi-terminal power system through



Distribution Box Guide: Types, Components & Solutions

Understand distribution boxes (DB boxes) in 5 minutes. Learn about types, components, functions, and uses. Find the perfect DB box for your needs.



Contact Us

For datasheets, pricing, or custom high-speed optical interconnect solutions, please visit:

<https://www.syropy.com.pl>