

Should the distribution box be fitted with a protective barrier





Overview

If the box will be exposed to rain, dust, or sun, you'll need one with higher protection — look for models with IP66 or NEMA 4X ratings to stay safe and compliant. Choose the right box based on environment (indoor/outdoor), load capacity, and durability. Ensure safe placement: install in dry, accessible areas with good ventilation and at appropriate height (typically ~1. When electrical problems occur—such as short circuits or excessive power draw—the circuit. In modern electrical systems, cable distribution boxes (also known as electrical distribution boxes or distribution boxes) play a crucial role as the key hub for managing, distributing, and protecting circuits.



Should the distribution box be fitted with a protective barrier



Requirements And Specifications For Installation Of

A leakage protector should be installed in the distribution box to provide additional safety protection. Installation requirements in special

Q& A: Is distance satisfactory to protect electrical

In this EHS Hotline Q& A, an EHS Hero subscriber asked whether distance is satisfactory for protecting power distribution boxes (breaker boxes,



ESD Packaging Solutions Guide: Anti-Static Materials,

ESD Solutions: From Static Bags to Boxes There is a wide range of ESD protection options available to you, including bags, boxes, totes, and

Distribution Boards: Enhancing Electrical Safety and Efficiency

These essential distribution and protection devices safeguard valuable equipment, individuals, and facilities by regulating the electrical supply. This blog deeply dives into the



Product Catalog



Safety Barriers , R. STAHL

Safety barriers are used as cost-effective isolators without galvanic separation between intrinsically safe and non-intrinsically safe circuits. Their function is to

Distribution boards components

Distribution boards (generally only one in residential premises) usually include the meter (s) and in some cases (notably where the supply utilities impose a TT earthing system and/or tariff



Requirements And Specifications For Installation Of

The distribution box should be installed in an area close to the power supply to reduce power loss and ensure safety. Avoid installing in a humid and



Distribution Boxes Explained: Types, Functions, and

Most distribution boxes contain circuit breakers or fuses that function as protective barriers for the connected wiring and electrical devices. These



Technical Requirements for Distribution Box in Electrical Industry

Insulation barrier protection (transparent) should be required behind all distribution box screens to meet the relevant national regulations; the color requirements of distribution boxes are the same.

Understanding Distribution Boxes: A Comprehensive Guide

In general, a distribution box is mainly used to distribute electrical power to multiple circuits and provide circuit protection. An electrical panel may



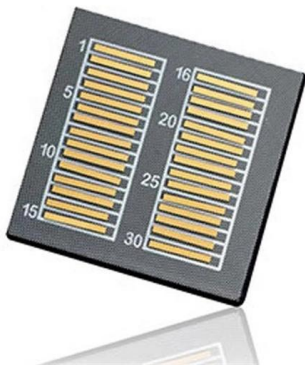
Distribution box

Yet the distribution box is a highly complex component that not only ensures safe power distribution, but is also responsible for protection in an emergency. In this article, you will learn everything you need



Installation Standards and Safety Precautions for Distribution Boxes

Distribution boxes, switch boxes should be installed in dry, ventilated and room temperature places; shall not be installed in the role of serious damage to the gas, smoke, vapour,

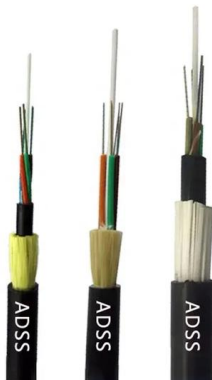


Role of Protective Enclosures in Safe Electrical Installations

Protective enclosures play a vital role in ensuring the safe operation and longevity of electrical systems. These enclosures not only protect against environmental factors like dust,

FM guide to the selection of enclosures for distribution boards

Exposed conductive parts inside the unit should not be connected to the protective earth conductor. These parts must always be connected to a protection system that implies the use of a protective



Distribution Boxes Explained: Types, Functions, and

Beyond simple power distribution, these units provide essential safety measures that protect against electrical hazards like short circuits and power

Protection for the Electrical Distribution System



As electrical distribution systems evolve with the integration of renewable energy sources, distributed generation, and smart grid technologies, the complexity and dynamic behaviour of the



What Are the Top 10 Taboos and Precautions in the Installation of

If the distribution box door contains devices operating above extra-low voltage, and no protective earth wire is provided, it can easily cause safety accidents.

Personal Protective Equipment

When engineering, work practice, and administrative controls are not feasible or do not provide sufficient protection, employers must provide personal protective equipment (PPE) to their employees and



Installation Standards and Safety Precautions for Distribution Boxes

Otherwise, special protective treatment. 11. The power distribution system should be set up indoor total distribution box and outdoor sub-distribution box or set up outdoor total distribution



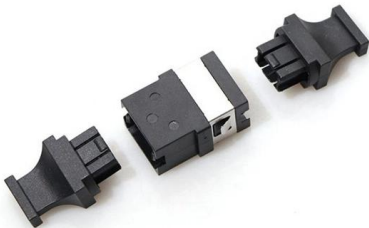
Understanding Distribution Boxes: A Comprehensive Guide

Learn what a distribution box is, its types, and how to choose the right one for your project. Includes clear examples and expert tips.



How to Install a Cable Distribution Box Safely and

Reliable cable distribution boxes ensure safe, efficient power management for residential, commercial, and industrial systems. Learn



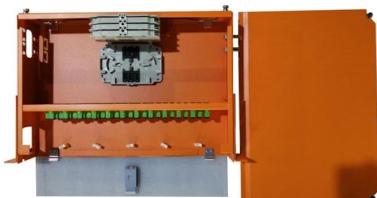
How to Install a Distribution Box--A Comprehensive

Whether you are an electrical contractor or a construction brigade, knowing how to properly and safely install distribution boxes is the basis of



How to confirm whether the installation location of the

Ensure that the installation location of the electrical distribution box will not interfere with other equipment or production processes. The box should not





Contact Us

For datasheets, pricing, or custom high-speed optical interconnect solutions, please visit:

<https://www.syropy.com.pl>