

Should cable trays use single-core wire or cable





Should cable trays use single-core wire or cable



CABLE TRAY INSTITUTE

The Cable Tray Institute (CTI) was founded in 1991 to support the cable tray industry by engaging in research, development, education, and the dissemination of



100+ Essential Questions Answered About Cable Trays:

Discover over 100 expert answers about cable trays, covering key topics like material selection, load capacity, installation methods, and maintenance.

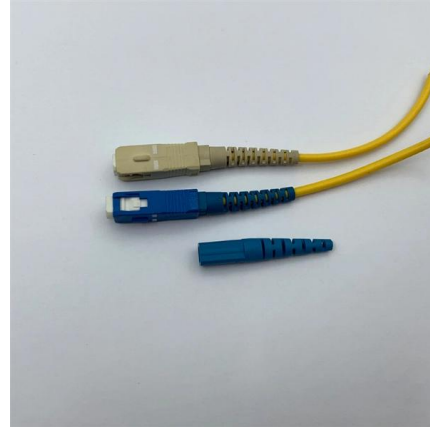
What Are Tray Cables and Their Types?

Discover the various tray cable types, ideal for industrial applications. Learn about their construction, uses, and benefits in electrical installations.



Ultimate Guide to Cable Tray Selection - Types,

Learn how to choose the best cable tray system for your needs. Explore types, materials, installation tips, and NEC compliance in this expert guide.



CABLE

If you are carrying single-core 630mm cables, then you would probably want to use a proper cable tray rather than a wire basket. He adds: "You can carry more weight by using more



Types of Cable Typically Used in Cable Tray

To that end this Bulletin is intended to discuss the types of cables most frequently used in cable trays and the wiring methods permitted in cable trays under the



Cable Tray Fill Rules (NEC 392)

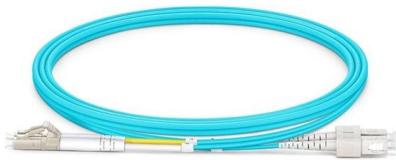
Cable Tray Fill and Installation per NEC 392 Cable tray types, fill rules for single-conductor and multiconductor cables, ampacity derating, separation





Cable Tray Systems: Requirements and Best Practices

This article explains the main requirements and good practices for cable tray systems, including tray types, materials, loading, supports, bonding, cable selection, and installation details.



Cable Tray Technical Guide A practical guide to product selection and

In designing supports for a cable tray system, consideration should be given to the loads associated with future cable additions and any additional loading that may be applied to the cable tray system (e.g.,

Single-Core vs. Multi-Core Cables , How to Choose?

Explore the differences between single-core and multi-core cables, their applications, advantages, and disadvantages in electrical systems.



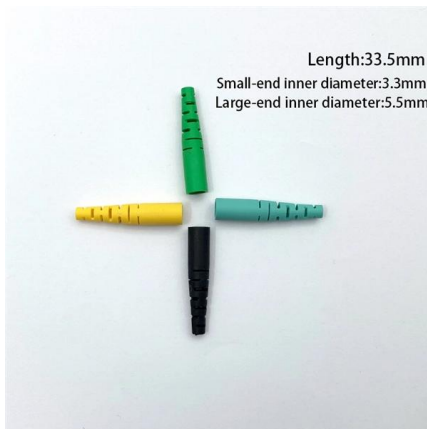
The Ultimate Guide to Tray Cables: Types, Applications and

Tray cables (TC) are multi-conductor cables designed and rated for installation in cable trays and raceways or supported by messenger wires. Unlike standard electrical cables, tray cables



HOW TO CHOOSE THE RIGHT CABLE TRAY

A cable tray is a system used to support and route cables and wiring in an industrial environment. Cable trays are used in various installations, including commercial construction, data centers, computer

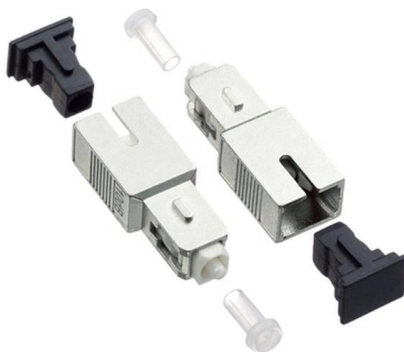
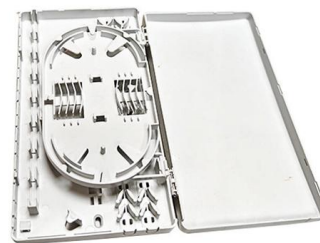


Explaining NEC Article 392 on Cable Trays

NEC Article 392 explains cable trays, their components, appropriate wiring methods for cable trays, and instances where they are and are not

Cable Tray Questions , Cable Tray Institute

Answer: Yes, there are NEC rules. Instrumentation, signal, and telecommunications cabling should be separated from power cabling. There are NEC requirements, but also for noise and electromagnetic



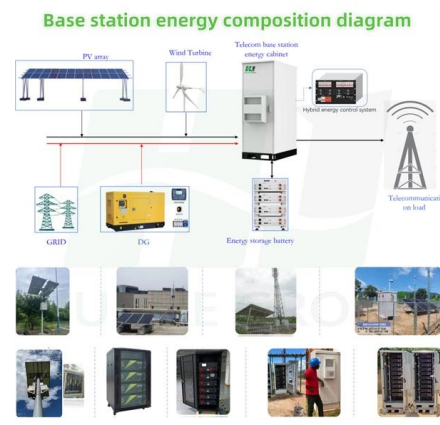
A Comprehensive Guide to Tray Cable

Tray cable is a widely used type of multiconductor or multipair cable approved for installation in cable raceways and cable trays. According to the NEC



Core Cable: Single Core vs Multi-Core

Read More: Single Core Cable VS Multi-Core: What's The Differences? core cable vs pair cable
Core cables and pair cables are two distinct

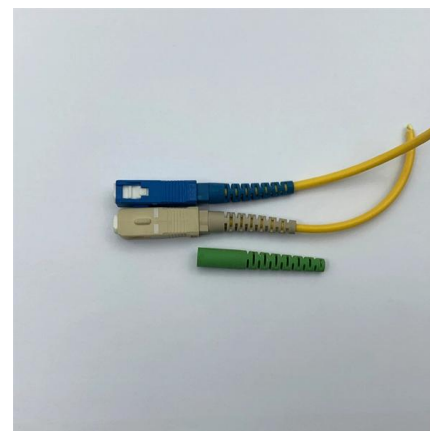


Single Core Cable VS Multi-Core: What's the Differences?

Explore the important differences between single core cable and multi-core cables in our blog. Learn about their unique benefits in different

Session 13 - Wiring Methods & Cable Standards

On trays or racks HV cables shall be segregated from the LV cables. Individual cables emerging from floors or soil shall be protected against mechanical damage by means of galvanized steel pipes or



Single Conductors in Tray or Basket , Information by Electrical

This table includes almost all common types of wire and cable found in the NEC. Cable types that are not presented in the table include single-conductor building wire types such as





POWER CABLE INSTALLATION GUIDE

When pulling cable into cable trays the same approach should be used for cable installed into conduit. Care must be given to the run lengths, number of cable turns, and cable sheave size to ensure the



7 Types of Cable Trays: How to Choose the Right One

This article explains each major cable tray type, how it works, and when it should be used, so users can make informed, standards-based decisions.



Annex I

The single core power cables shall be attached to the cable trays or supporting structures with cable clamps, sized for short-circuit currents according to IEC 61914.



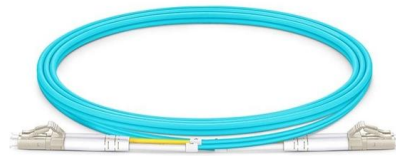
qian-an-industrial-cable-trays Service provider

Single wires, hose lines, cuttings, supply lines, cable harnesses, assemblies, lighting accessories such as shrink tubes Cable types such as PTFE, PFA, FEP, and multi-core transparent cables



Siemens Profinet Cable Specs For Industrial Networks

The Core Requirements of PROFIBUS/PN Cabling Before you head to the supply cabinet or log onto a supplier's site, you demand to realise what "PROFINET" really demands in terms of



Comparison of Multi-core vs. Single-core Cable

Single-core cables consist of a single solid conductor, featuring simple structure, high current-carrying capacity, and excellent mechanical strength. They are primarily

Cable Tray Technical Guide A practical guide to product selection and

SOLID-BOTTOM CABLE TRAY Providing additional cable protection, solid-bottom cable tray is sometimes preferred to support and protect numerous small instrumentation and control cables.





Guide for Selection of Single-core and Multi-core Cables

Single-core wire with the outer skin peeled off is a big, thick copper core inside, so it's harder, so we can call it BV hard wire. Inside the multi-core wire is a lot of



Cables Allowed in Tray

This is a critical distinction because it means the requirements for the cable contained in raceway is different than cable supported by cable tray. Cable in tray is viewed as being exposed to a greater



Contact Us

For datasheets, pricing, or custom high-speed optical interconnect solutions, please visit:
<https://www.syropy.com.pl>