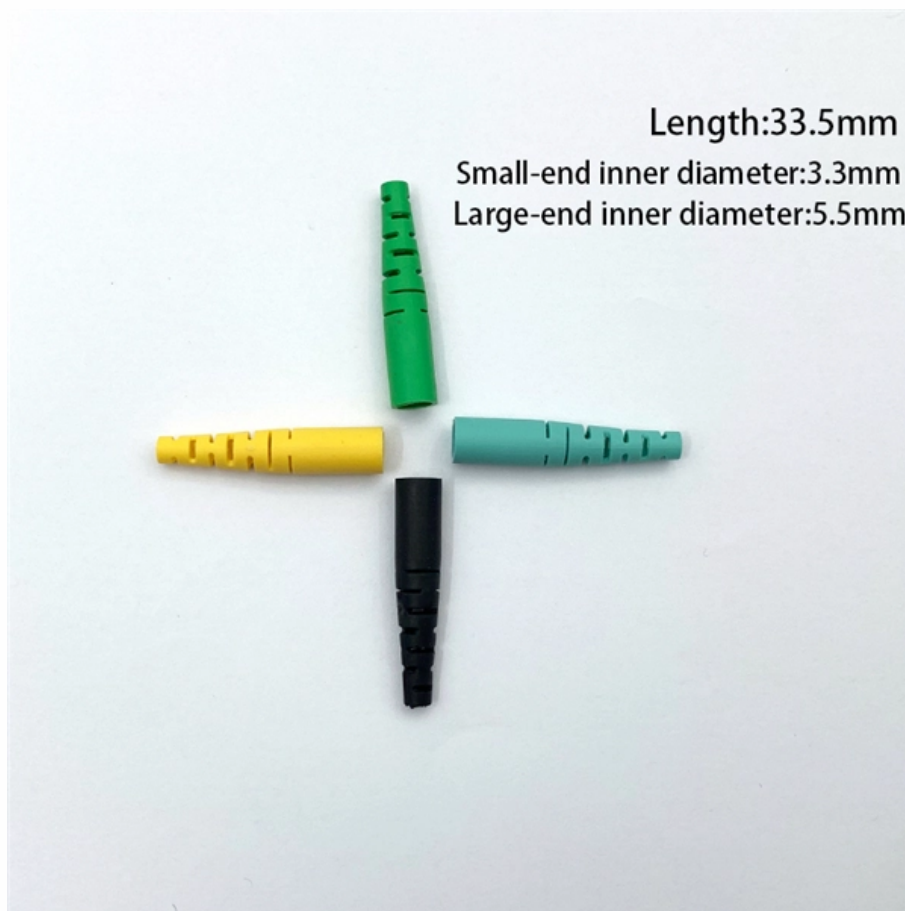


# Should I select relay protection





## Overview

---

When selecting relay protection for electrical systems, prioritize accuracy, response speed, and compatibility with your network voltage and fault types. Types of Protective Relays: Protective relays are categorized by their mechanism (electromagnetic, static, mechanical) and function. They are intended to quickly identify a fault and isolate it so the balance of the system continue to run under normal conditions.



## Should I select relay protection

---



### Fundamentals of Relay Protection Design

Relay protection is a crucial aspect of electrical power network transmission and distribution systems, ensuring the safety and reliability of the overall network. Designing an effective

### Protective Relay Technology: Safeguard Electrical Systems

Explore Protective Relay Technology: the key to electrical safety. Discover its types, functions, and how it prevents system failures.

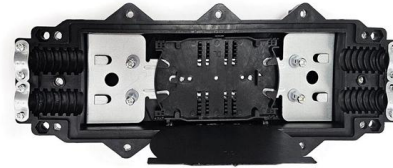


### Protective Relays and Monitoring Relays Selection

Protective relays and monitoring relays detect or monitor for abnormal power system conditions. Protective relays detect defective lines, defective apparatuses, or

### Protective Relay: Working, Types, and Applications

Learn about protective relays, their working principle, types, and applications in power systems. Discover how relays protect transformers,



## Understanding Protective Relays in Electrical Power Systems -

Explore the world of protective relays and their vital role in ensuring the safety and reliability of electrical power systems.



## How to Select, Configure, and Apply Safety Relays

Learn how to select, configure, and apply safety relays based on machine risk assessments and ISO 13849 PL ratings. Includes real-world examples, wiring tips, and relay selection charts.



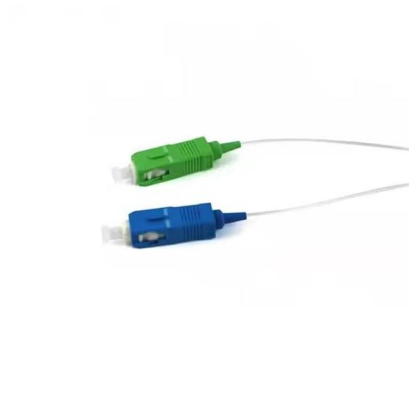
## Power System Protective Relays: Principles & Practices

As the protected components of the electrical systems have changed in size, configuration and their critical roles in the power system supply, some protection aspects need to be revisited (i.e. the use of

## Choosing Electrical Protection Relays



Select the right electrical protection relay based on application, reliability, and cost. Learn about types and strategies for electrical system protection.



### 301 Moved Permanently

301 Moved Permanently 301 Moved Permanently  
nginx

### Protective Relaying Philosophy and Design Guidelines

It should be recognized that details associated with effective application of protective relays and other devices for the protection of shunt reactors is a subject too broad to be covered in detail in this



### The basics of power system protection that every

Introduction to relay protection Protection is the branch of electric power engineering concerned with the principles of design and operation of

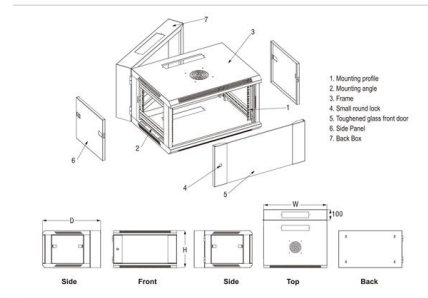


### Power System Protective Relays: Principles



## & Practices

Abstract: Protective relays and devices have been developed over 100 years ago to provide "last line" of defense for the electrical systems. They are intended to quickly identify a fault and isolate it so the



### Protective Relay , Fundamental Requirements of

A Protective Relay is a device that detects the fault and initiates the operation of the circuit breaker to isolate the defective element from the rest of the system.

### What is Protection Relay?

A protection relay is a crucial component of electrical systems that safeguard infrastructure, employees, and equipment from electric problems and

Integrated Aluminum Alloy Die Casting



Durable and Secure Metal Screws



### Power System Protective Relays: Principles & Practices

Protective relays and devices have been developed over 100 years ago to provide "lastline"of defense for the electrical systems. They are intended to quickly identify a fault and isolate it so the balance of





## Motor Protection Relays , How it works, Application

Explore the importance of motor protection relays, their types, selection criteria, and future trends in motor safety and efficiency.



## Types of Protective Relays

This article covers various types of protective relays, such as overcurrent, directional, and differential relays, highlighting their operating characteristics and applications

## How To Choose Relay

Applying The Principles To Relay Selection  
Knowing how to choose a relay will save you time and money in breakdowns and failures. Follow the various principles of



## Basic protection relay knowledge

On the other hand, unselective protection operation in the extra high voltage network - i.e. at the national grid level- may endanger the stability of the whole power system, possibly leading to a



## Relay Protection in HV/MV Substations: Calculations,

Effective relay protection in HV/MV substations requires a thorough approach encompassing calculations, precise settings, meticulous coordination,



## Types of Electrical Protection Relays or Protective Relays

? Key learnings: Protective Relay Definition: A protective relay is an automatic device that senses abnormal conditions in electrical circuits and

## Protection Relay Types and Testing Procedures

Discover the types of protection relays, their applications, and essential testing procedures to ensure grid reliability and safety. Learn about



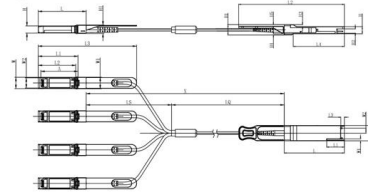
**doi: 10.1007/978-3-319-20919-7\_3**

Perform power system simulations of selected faults and observe how a given protection principle (overcurrent, impedance, and differential) works. Set the relays for a given power system. Verify by



## How to Choose the Best Relay Protection for Your Electrical System

Learn what to look for in relay protection devices, including types, key features, and buying tips to ensure safety and reliability in power systems.



Unit mm

QSP28	L	L3	L2	L3	L4	W	W1	W2	H	H1	H2	H3	H4	H5	H6
Max	72.2	-	128	4.35	61.4	18.45	-	6.2	8.6	12.4	5.35	2.5	1.6	2.0	-
Type	72.0	-	4.20	61.2	18.35	-	-	8.5	12.2	5.2	2.3	1.5	1.8	6.55	-
Min	68.8	16.5	124	4.05	61.0	18.25	2.2	5.8	8.4	12.0	5.05	2.1	1.3	1.6	-

SFP28	L	L1	L2	L3	W	W1	W2	H	H1	A
Max	57.6	47.7	44.55	119.9	13.8	14.0	12.3	8.7	10.3	45.25
Type	57.4	47.5	44.35	117.9	13.55	13.8	12.1	8.5	10.1	45
Min	57.2	47.3	44.15	115.9	13.3	13.6	11.9	8.4	9.9	44.65



## A Comprehensive Guide to Relays: Selection, Applications, and

Relays should also come with appropriate safety features, especially for high-voltage applications. Ensure that the relay has overload protection and short-circuit protection to prevent

## Protective Relays and Monitoring Relays Selection

Both protective relays and monitoring relays may be sensitive to voltages, power or phase, current, or frequency. Protective relays often have circuitry in them for the



## Choosing the Right Protection Relay

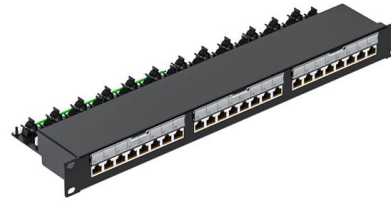
In this guide, we will distinguish three types of functions: protection against abnormal variations in the main supply, protection against leakage



## Basic protection relay knowledge



A fast and selective arc fault mitigation for air-insulated LV & MV switchgear and Relion protection and control relays and sensor technology protect staff and plant facilities for many years.



### **Industrial Relay Selection Guide: How to Choose the**

In this industrial relay selection guide, find the right relay by considering important factors like type, voltage, durability, and application needs.

## **Contact Us**

---

For datasheets, pricing, or custom high-speed optical interconnect solutions, please visit:  
<https://www.syropy.com.pl>