

Several electrical distribution boxes in the elevator machine room





Several electrical distribution boxes in the elevator machine room



NEC Article 620: Elevators, Part 2

Overcurrent devices and disconnects must be located in machine or control spaces, be lockable and provide a single means to disconnect

California Code of Regulations, Title 8, Section 3012. Electrical

3. Ducts for heating, cooling, ventilating, and venting may be installed in the machine room, subject to the following: a. Clear headroom of 7 ft (2.13m) is maintained. b. Clear workspace around all elevator



NEC Article 620: Elevators

Utility-owned electrical structures not directly concerned with electrical generation, transmission and distribution are NEC regulated. An example would be the

Understanding What Is Elevator Machine Room: A

An elevator machine room is a dedicated, secure area that contains the mechanical and electrical components necessary for your elevator to function.



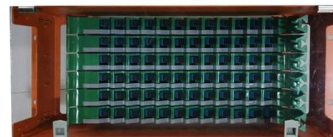
Prohibited Equipment in Elevator Machine Room or Control Room

Electrical devices related to the elevator's power supply are not allowed in the machine or control rooms without special authorization. However, transformers up to 30 kVA that serve these areas may be



Panels in Elevator Machine Rooms

Anything in the machine room is to remain in the machine room. 38-037 Wiring in hoistways, machine rooms, control rooms, and machinery spaces and control spaces Unless a



Product parameters



OESC 620.37 Wiring in Hoistways, Machine Rooms,

In Oregon, Raceways and conduits for the connection of elevator devices shall only enter the machine room to the extent necessary to connect the devices attached



EQUIPMENT ROOMS, ELEVATOR

EQUIPMENT ROOMS, ELEVATOR Security / Identification: All mechanical equipment rooms that house elevator machinery shall be lockable and securable such that access is limited to elevator mechanics



MBT-MS-Y 380V Elevator Power Distribution Box In

MBT-MS-Y 380V Elevator Power Distribution Box In Machine Room



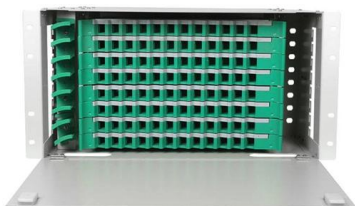
OESC 620.37 Wiring in Hoistways, Machine Rooms,

NEC 620.37 covers wiring in hoistways, machine rooms, control rooms, machinery spaces, and control spaces related to the elevator. In the OESC, this section was



Code requirements for elevator machine room wires? This is a

27 votes, 49 comments. 14K subscribers in the Elevators community. Everything related to elevators and escalators.





What is an Elevator Machine Room?

The Machine room is an area set aside for the elevator equipment and consists of the Controller, 2 electrical disconnects and the pump unit. The



Stumped by the Code? NEC Requirements for Elevators

Where there is no machine room, control room, machinery space, or control space outside the hoistway, the overcurrent device must be located outside the



The Electrical Ups and Downs of Elevator Design , EC& M

The many codes and guidelines that regulate the electrical design of an elevator can seem overwhelming, and dealing with the electrical inspector,



6-1 Elevator Machine Room, Control Room, and Machinery Space

For each elevator group, provide electrical power service from the main building electrical distribution panel to the elevator machine room. Designer must consider type of elevator drive specified and





Wiring in Hoistways, Machine Rooms, Control Rooms, Machinery

Electrical wiring, raceways, and cables associated with elevators and dumbwaiters are allowed in hoistways, machine rooms, and control spaces for various functions, including signaling,



Elevator Equipment Room Code Requirements

Rules on elevator equipment rooms often distinguish between new and existing construction. In new construction, for example, the code may ban the presence of any equipment in the room that is not

Compliance with the 2017 NEC for Elevator Controllers

Traction elevators are typically installed in a "bank of elevators" where fused switches, or circuit breakers in a panelboard are located in the machine room serving the bank of elevators.



Elevator control PB panelboard design guide

Not only does the Elevator Control Panelboard provide electrical feeds, it also contains necessary components for the control of the elevator and the fire alarm system.



Residential Elevator Electrical Guide

The document outlines the electrical requirements for an elevator machinery space. It specifies that an electrician needs to provide: 1) Main power via a 10/3 wire

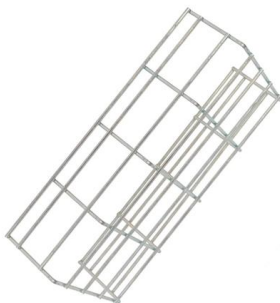


0110-ElectricalRequirements-1124

Explanation-The 240VAC feed should have a black, red, white, and ground wire to the machine room. All electrical contractors will have full knowledge of this requirement. Simply insure they are aware of

NEC Article 620: Elevators, Part 2

AI Overview NEC Article 620 prescribes wiring, protection, grounding and installation rules for elevators and related equipment. Each car, machine



Hoistway Wiring

There is some confusion as to what wiring may be introduced into an elevator hoistway or machine room, control room, control space, or machinery space. Wiring related only to the elevator



Understanding Distribution Boxes: A Comprehensive Guide

A distribution box, also known as a power distribution box or electrical distribution box, is used to distribute electrical power safely to multiple



Elevator machine room layout , Information by Electrical Professionals

We are planning to feed the elevator motor from a 480V panel "LPH-ELEV". This panel is also feeding the step down transformer "TF-ELEV-30kVA" which in turn feeds the Panel "LP-ELEV".

Contact Us

For datasheets, pricing, or custom high-speed optical interconnect solutions, please visit:
<https://www.syropy.com.pl>