

Server Access Switch Configuration





Server Access Switch Configuration

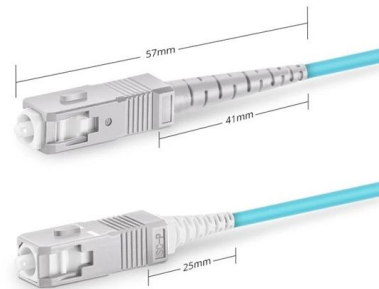


Basic Switch Configuration Guide with Examples

This tutorial explains basic switch configuration commands in detail with examples.

Initial Switch Configuration

Whether the configuration deployment of a switch is completed all at once or done in phases, the basic switch settings must first be configured. The initial management configuration includes setting IP



Simplex SC UPC

How To Configure A Network Switch

Learn how to configure a network switch for optimal performance and security. Follow these step-by-step instructions to



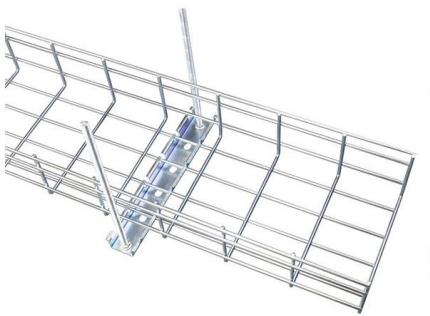
Basic Cisco Switch Configuration Example in 10 Steps

Learn how to configure a switch with ServerMania's expert guide. Optimize your network setup quickly and efficiently. Get started now!



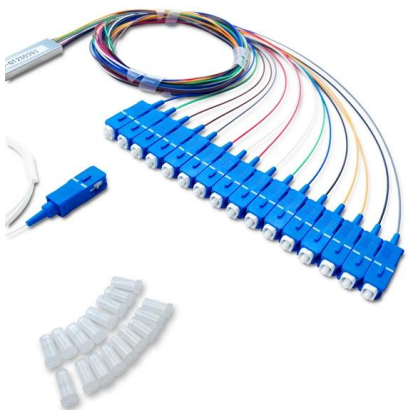
9 Configuring Switch Security

9 Configuring Switch Security The authentication, authorization, and accounting (AAA) mechanism verifies the identity of, grants access to, and tracks the actions of users managing a switch. The



Learn AI to help transform the future

The AI-driven shift in enterprise IT is opening extraordinary possibilities for businesses to innovate, scale, and stay secure.



Configuring Access and Trunk Interfaces

Configuring Access and Trunk Interfaces Ethernet interfaces can be configured either as access ports or trunk ports. Trunks carry the traffic of multiple



Guide to Basic Switch Configuration , Auvik

Switch configuration on your own can seem like a daunting task. Use this handy guide to get your network switch up and running with ease.



Configuration Guide for Cisco Secure ACS 4.1

Deploy the Access Control Servers This chapter discusses topics that you should consider before deploying Cisco Secure Access Control Server, hereafter

How to Configure a Cisco Switch in 10 Steps

In this step-by-step guide, we walk you through configuring Cisco



Configuring and Securing a Cisco Switch: A Step-by

You've successfully configured a Cisco switch from scratch using a Windows workstation, PuTTY and should have an overall understanding on how to



8 Steps to Configure Your Network Switch

Follow these simple best practices to set up a new network switch. Just like riding a bicycle, nobody's born knowing how to setup a network switch. And this process is a little more advanced than, say,



Understanding the Role of an Access Switch in Your

Explore the crucial role of an access switch in your network. Learn how it connects end-users and devices via Ethernet, enhancing overall performance.

Configuring Switch-Based Authentication

Preventing Unauthorized Access to Your Switch
You can prevent unauthorized users from reconfiguring your switch and viewing configuration information. Typically, you want network administrators to have



How to Configure a Cisco Switch in 10 Steps

Configuring a Cisco switch is a fundamental task for network administrators, as it lays the groundwork for efficient and secure network



Understanding Access Switches: Key Components of

Explore the role of access switches in your LAN setup. Understand their key components, functions in the access layer, and how they integrate into



18 Configuring Switch Security

18 Configuring Switch Security The authentication, authorization, and accounting (AAA) strategy is used to verify identity of, grant access, and track the actions of remote users in all switches in the Cisco

How to Configure a Cisco Switch (step by step)

If you're looking to configure a switch for the first time, this post is for you. Learn step-by-step configuration commands for Cisco IOS Switches.



Configure SSH Server Authentication Settings on a Switch

Configure SSH Server Settings Configure SSH Server Authentication Settings Step 1. Log in to the switch console. The default username and password is cisco/cisco. If you have



AAA Configuration on Cisco Switch

This lesson explains how you can enable AAA authentication and 802.1X Port control for client authentication on Cisco switches.

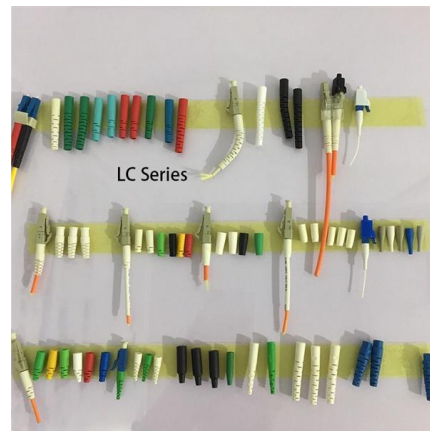


Cisco Switch Basic Configuration

Cisco switches are the backbone of many enterprise and service provider networks, enabling efficient and secure communication between

Configuring VLANs on Cisco Switches

Master configuring VLANs on Cisco switches. Learn to configure Access and Trunk ports, and Native VLANs and Allowed VLAN Lists. Learn to verify with show



Basic Cisco Switch Configuration Example in 10 Steps

Unlike other lower class switch vendors (which are plug-and-play), the Cisco switch needs some initial basic configuration in order to enable management, security



A Switch Connects to a Server

When the server uses static link aggregation, the access device must use the manual mode. When the server uses IEEE 802.3ad dynamic link aggregation, the access device must use the LACP mode.

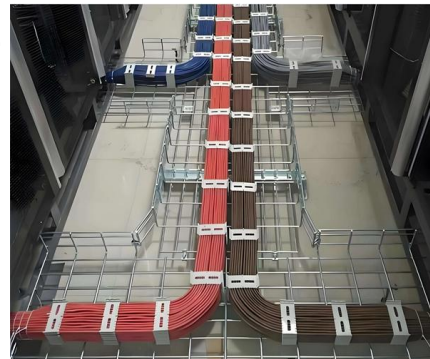


How to Configure Cisco Switches: A Step-by-step Guide

How to configure a Cisco switch? In this step-by-step guide, we'll configure a Cisco Catalyst Switch. Catalyst series is a well-known family of

How to Configure Cisco Switches: A Step-by-step Guide

In this step-by-step guide, we'll configure a Cisco Catalyst Switch. Catalyst series is a well-known family of enterprise-grade network equipment,



Contact Us

For datasheets, pricing, or custom high-speed optical interconnect solutions, please visit:
<https://www.syropy.com.pl>