

Server AI Module





Server AI Module

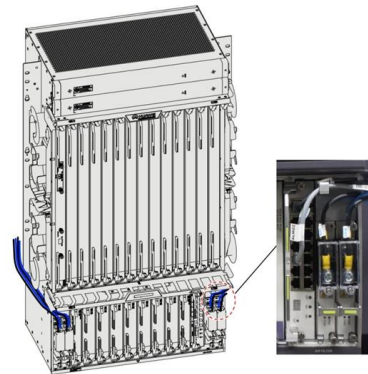


Building the AI Server

AI/ML demands are reshaping servers. Explore how CPUs, GPUs, FPGAs and AI accelerators drive performance for workloads like deep learning

Micron Samples 256-GB DDR5 RDIMM for AI Servers

Micron is now sampling its new 256-GB DDR5 registered dual in-line memory module (RDIMM) for AI and HPC platforms.



What is an AI server?

AI servers are high-performance systems specifically designed to process complex AI workloads, including model training and real-time inference.

ITOM

Using AI and machine learning, ServiceNow Event Management aggregates and correlates events from a variety of monitoring tools, suppresses duplicates, and



Samsung plans Q4 launch of AI server memory modules

Samsung Electronics plans to send samples of its CXL 3.1 memory modules for AI servers in the third quarter. The company aims to begin mass production in the fourth quarter as demand



Power AI at Scale with NVIDIA MGX(TM) AI Servers

NVIDIA MGX is a modular server architecture built to power AI, HPC, and cloud-scale workloads. With flexible support for multiple generations of CPUs and



Micron Redefines AI Performance With Sampling of 256GB DDR5 Server Module

Micron Technology, Inc. today announced it has sampled 256GB DDR5 registered dual in-line memory modules (RDIMM) to key server ecosystem enablers. The module is built on the





High-Bandwidth Memory Solution for AI Servers

A memory module is set to power AI servers with higher speed, lower energy use, and smoother performance for large AI workloads.



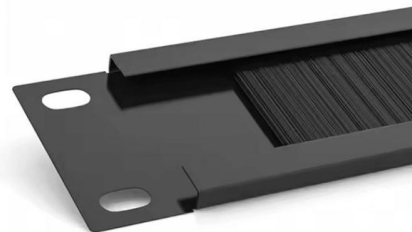
Rambus Enables SOCAMM2 Memory Modules for AI Servers

As AI workloads reshape modern data centers, memory is one of the most critical factors for performance, efficiency, and total cost of ownership. While CPUs and accelerators continue to scale



SK hynix begins mass production of next-gen AI server memory

SK hynix Inc. said Monday it has begun mass production of a next-generation memory module designed for artificial intelligence servers, as it seeks to strengthen



SK hynix Begins Mass Production of 192GB SOCAMM2 'Setting

It is designed to be a primary memory solution for next-generation AI servers. SOCAMM2 (Small Outline Compression Attached Memory Module 2): An AI server-optimized





How to Fix a 500 Internal Server Error

A "500 Internal Server Error" is a message you might see when browsing the web. It means something went wrong on the website's server, but



Micron Redefines AI Performance With Sampling of 256GB DDR5 Server Module

Micron Technology, Inc. today announced it has sampled 256GB DDR5 registered dual in-line memory modules to key server ecosystem enablers. The module is built on the company's

China Memory Module Maker POWEV Advances DDR5 Push

As the market focuses on China's push into HBM and next-gen NAND, another domestic memory player is quietly advancing in DDR5 amid the AI-driven demand surge. According to IT



How to Build an Affordable Custom AI Server for AI

Take control of your AI projects with a custom-built server. Learn to optimize hardware, reduce costs, and future-proof your AI setup.



Best Practices , ServiceNow

Explore ServiceNow's best practices to optimize processes, enhance performance, and improve user experience.



PowerShell Gallery , SqlServer 22.4.5.1

This module allows SQL Server developers, administrators and business intelligence professionals to automate database development and server administration, as well as both



A Jargon-Free Guide on How AI Server Architecture Works

Whether you're deploying AI in your business, tinkering with a project, or just want to understand the tech shaping our world, this guide discusses what



Get Started With the Microsoft MCP Server for Enterprise

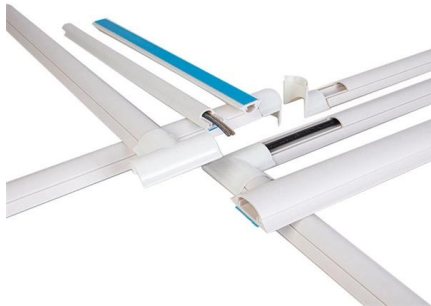
Microsoft MCP Server for Enterprise: Learn how to install, configure, and run the MCP Server in your MCP clients to query Microsoft Graph using natural language.





Configure security baselines for Windows Server 2025

Learn how to deploy security baselines using OSConfig to enforce granular security settings to better protect and harden your Windows Server 2025 environment.



Artificial Intelligence (AI) Servers - Intel

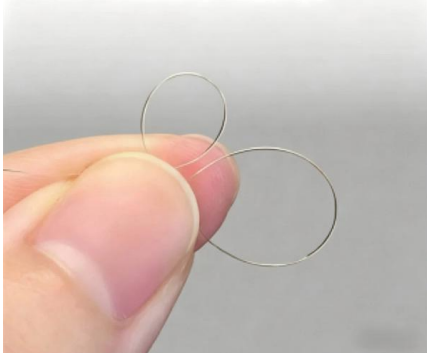
Learn about AI server components, key considerations to help inform AI server design and the potential benefits unlocked through optimal server architecture. AI



Build Agents using Model Context Protocol on Azure

This article explains how to build AI agents using the Model Context Protocol (MCP) on Azure to create intelligent, scalable applications.

7.5mm Radius



Micron Redefines AI Performance With Sampling of 256GB DDR5 Server Module

With our 256GB DDR5 RDIMM, Micron is enabling servers to deliver significantly higher performance," said Raj Narasimhan, senior vice president and general manager of the Cloud



What is an AI Server? AI Server Architecture Explained

Learn what AI servers are and how they power artificial intelligence. Complete guide to AI server components, architecture, and requirements for ML



Micron Redefines AI Performance With Sampling of 256GB DDR5 Server Module

"Capacity, bandwidth, and power are the defining drivers of AI efficiency. With our 256GB DDR5 RDIMM, Micron is enabling servers to deliver significantly higher performance," said Raj

Why liquid cooling will dominate AI data centres in 2026

As AI power demands surge into 2026, liquid cooling is becoming the essential technology keeping data centres efficient, stable, and future-ready.

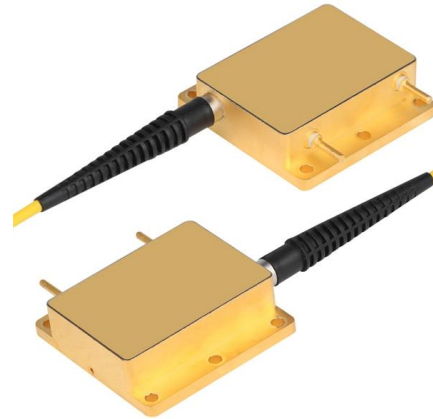


Windows Server 2025 and Windows 11 PowerShell modules

These modules enable you to use Windows PowerShell to administer, maintain, configure, and develop new features for Windows Server 2025 and Windows 11. The table below



but both methods say module not found. I am using online ide pro so it auto imports all modules via Pyodide and WebAssembly. If i do succesfully import it i also don't understand how to



Micron Redefines AI Performance With Sampling of 256GB DDR5

The module is built on the company's leading-edge 1-gamma technology, which is capable of speeds up to 9,200 megatransfers per second (MT/s), greater than 40% faster than modules in

Contact Us

For datasheets, pricing, or custom high-speed optical interconnect solutions, please visit:
<https://www.syropy.com.pl>