

# **Semiconductor laser diode 1310nm to 56**





## Semiconductor laser diode 1310nm to 56

---



### Microsoft Word

1310NM FABRY-PEROT (FP) LASER DIODE LC OR SC PACKAGE FP-1310-4I-XXX The FP-1310-4I-xxx is an MOCVD grown InAlGaAs ridge laser diode with emission wave-length of 1310 nm and

### 1550nm Laser Diode, 20mW DFB Laser (\$565.00)

These lasers diodes are designed for compliance with Telcordia GR-468-CORE standards. This standard is a widely recognized standard that outlines the

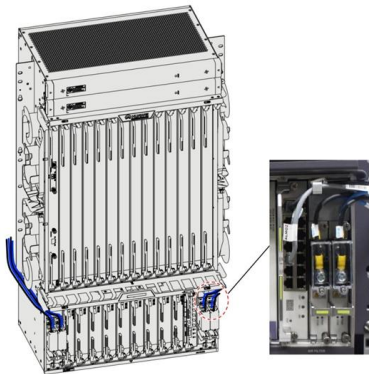


### TO56-114-116 Pulsed Laser Diode

When operated in pulsed mode has a center wavelength of  $1310\text{nm} \pm 20\text{nm}$  (19 watts peak pulsed) in a standard TO-56 package. It is multimode, which allows for high coupling efficiency into optical fibers.

### High power Distributed Feedback Lasers (DFB)

Achieving High-Power with SemiNex Distributed Feedback (DFB) Laser Diodes SemiNex Distributed Feedback (DFB) lasers provide the ultimate in stability and



### **1310nm Lasers and Laser Diode Modules , RPMC Lasers Inc**

What are 1310nm Lasers? 1310nm IR laser diodes and IR laser modules are available with both single-mode and multi-mode beam profiles. They have either free space or fiber coupled outputs. The diode

### **Directly Modulated Semiconductor Lasers Market 2025**

Asia-Pacific The Asia-Pacific region dominates the global Directly Modulated Semiconductor Lasers market, driven by robust telecom infrastructure expansion and the rapid deployment of 5G networks.



### **25G DFB Laser Diode, 1270~1370nm TO56 Laser**

GLSUN 25G TO56  
1270/1290/1310/1330/1350/1370nm DFB Laser Diode is TO56 package with Aspherical lens cap and uncooled DFB/LD chips with MQW



### 1310nm DFB Laser Diode LC TOSA

The DFB-1310-10LR-LCA is specifically designed for applications based on several optical communications standards, including IEEE 10GBASE-LR, STM64, STM64 FEC, 10GFC, 10G GbE,



- IP65/IP55 OUTDOOR CABINET
- ALUMINUM
- OUTDOOR ENERGY STORAGE CABINET
- OUTDOOR EQUIPMENT CABINET

### 1310NM FP Laser Diode TO 56 Package

Detail Model:YS-FP-1310-56A Features: Wide Operating Temperature (-40°C to 85°C or 100°C) Stable Threshold Current for Easy Transmitter control (T0~80K) 1310nm Typical Emission Wavelength FP

### Semiconductor Laser : Laser diode module, DPSS laser

Laser diode module, DPSS laser, Fiber coupled Laser for sale : Semiconductor Laser



### FP-1310-5I-XXX-Laser-Diode-Pigtailed- Package-Data-Sheet

FP-1310-5I-XXX The FP-1310-5I-xxx is an MOCVD grown InAlGaAs ridge laser diode with emission wave-length of 1310 nm and standard continuous light output of 5 mW per facet. These lasers



## 1310 nm Laser

Description Compact 1310 nm laser is a powerful infrared diode laser module. This wavelength matches one of the water absorption lines and is therefore usable in



## TO56 1310nm Laser Diode for Optical Communication

10Gbps 1310nm DFB Laser TO 56 4pin Header for SFP Module Lovi 10Gbps 1310nm DFB Laser TO-Can is designed for high performance optical

## 10Gbps 1310nm DFB Laser Diode TO 56 4PIN Header for SFP

10Gbps 1310nm DFB Laser Diode TO 56 4PIN Header for SFP Transceiver, Find Details and Price about Laser Diode Laser Diode TO from 10Gbps 1310nm DFB Laser Diode TO 56 4PIN Header for



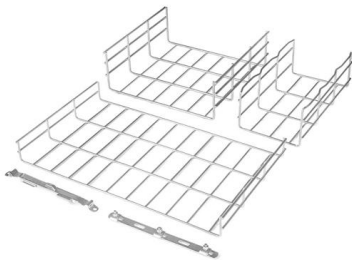
## 1310nm Fabry-Perot FP Laser Diode LC TO SA\_FP-1310-4I-LCX

The FP-1310-4I-LCx is an MOCVD grown InAlGaAs ridge laser diode with emission wave-length of 1310 nm and standard continuous light output of 5mW per facet. These lasers provide stable, single





The 1310nm from OSI Laser Diode, Inc. is a Laser Diode with Wavelength 1270 to 1330 nm, Output Power 500  $\mu$ W, 1000  $\mu$ W, 2000  $\mu$ W, Output Power 500  $\mu$ W, 1000  $\mu$ W, 2000  $\mu$ W, Threshold Current 6



### 1310nm Laser Diodes

All Brands on One Site, Compare Specifications and Get Pricing for 1310nm Laser Diodes, Unbiased SELECTION GUIDE, Research All of Your Choices and Select

### TO 56 Laser Diodes, DFB Laser Diode Chip Package, GLsunMall

TO-CAN 56 package for DFB Laser Diodes for emitting transmit ends ends with wide range of wavelengths and output power. Multimode or Single mode. Browse for wavelength and power options.



### 1310NM LASER DIODES

Fiber Optical Communications Diode lasers operating at the 1310nm wavelength are most commonly used in the telecommunications industry. Data is sent back and forth in rays of light, typically through



## High Power Lasers Diodes (10W ~ 1kW)

INTRODUCTION: For an in depth article on the technology and physics' principles underlying laser diodes, please refer to the article "A Technical Introduction to



## 1310 nm laser diodes & turn-key so

Standard singlemode DFB or Fabry-Pérot laser diodes from 10 to 500mW are offered as stock items or associated with a low noise or ultra-low noise CW or nanosecond pulsed turn-key driver.

## 1310nm DFB Laser TO56 InGaAsP DFB DIODES Module

BeamQ Laser 1310nm DFB Laser TO56 InGaAsP DFB DIODES Module # ML720AA47S-23 - ML720AA47S 1310nm 5mw TO56 InGaAsP DFB LASER DIODES with Narrow Line Width.



## 1310nm Laser Diodes, Comb, Fabry-Perot Lasers, SOA, Gain Chips

1310nm Laser Diodes and advanced semiconductor light sources including comb and Fabry-Perot lasers, FBG, SOA, gain chips, BA and BOA. Innolume offers full in-house production from epitaxy to



### **1310nm Fabry-Perot\_FP\_Laser\_Diode\_LC\_TO SA\_FP-1310-4I-LCX**

These lasers provide stable, single transverse mode oscillation. These are hermetically sealed devices in a coaxial package (TO-56) with an integrated photodiode to monitor the optical output. Suitable as

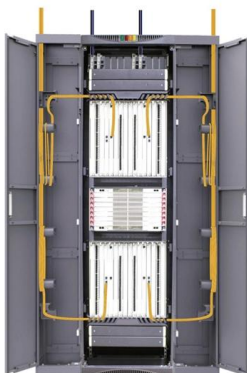


### **1310 NM FABRY-PEROT (FP) LASER DIODE TO56 PACKAGE**

FP-1310-4I-56A The FP-1310-4I-56A is an MOCVD grown InAlGaAs ridge laser diode with emission wave-length of 1310 nm and standard continuous light output of 5 mW. These lasers provide stable,

### **2.5Gbps 1310nm DFB Laser Diode TO56**

It is a high-tech communication enterprise specialized in the development, production and sales of semiconductor laser chips, laser diode TO,



### **LD-1310-31B Laser Diode**

The LD-1310-31B Fiber Coupled Laser Diode consists of Fabry-Perot lasers, having a fiber pigtail precisely attached for optimum coupling efficiency. This 1310 nm



## **T056 1310nm Laser Diode for Optical Communication**

Lovi 10Gbps 1310nm DFB Laser TO-Can is designed for high performance optical communication applications as well as supports performance



## **Contact Us**

---

For datasheets, pricing, or custom high-speed optical interconnect solutions, please visit:  
<https://www.syropy.com.pl>