

Selection of bolts for outdoor metal cable trays





Selection of bolts for outdoor metal cable trays



CABLE TRAYS GENERAL INFORMATION AND

General information of Kiraç Metal Cable Trays and installation guide are arranged in accordance with IEC 61537 standards and this document has been prepared for

Cable Tray Technical Guide A practical guide to product selection and

A practical guide to product selection and installation This guide for engineers and installers has been developed by ABB as a practical reference regarding cable tray characteristics, installation, and

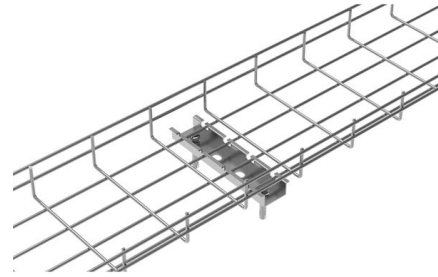


Mounting instructions

2 Intended use The screw-on cable tray systems are used to support and route all kinds of cables, taking the approved load values into account. Depending on the corrosion protection used, they can

BZP Cable Tray Bolts and Serrated Flange Nuts

These tray bolts and serrated flange nuts are specially designed for the rapid installation of cable tray and give a superior fixing than traditional roofing bolts.



Selecting Outdoor Cable Tray: A Project Engineer's Guide

Our engineer's guide helps you choose the right outdoor cable tray based on environment, load, and corrosion resistance. Select HDG, Aluminum, or

Guide to cable support systems

OBO also offers matching load details including informative load tables - using which the suitable cable tray, mesh cable tray or cable ladder can be selected - for the mounting systems such as universal



Selecting Cable Trays: A Complete Guide for Cable

Selecting cable trays can feel overwhelming, especially with so many options available. But don't worry--I've got you covered.





B-Line series Cable Tray Design Considerations

For ladder or ventilated trough trays, the total sum of the cross-sectional areas of all the cables to be installed in the cable tray must be equal to or less than the allowable cable area for the tray width, as

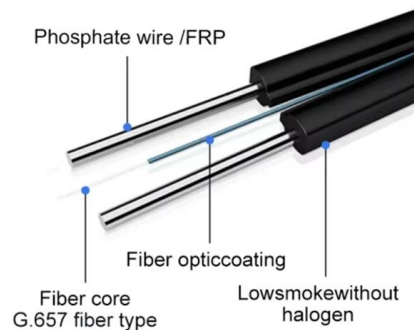


The Ultimate Guide to Selecting the Right Cable Tray for

Project Assessment: Begin by assessing the specific requirements of your project, including the type of cables, environmental conditions, and load capacity Material

GUIDE CABLE TRAYS TECHNICAL

Specifies requirements for metal cable trays and associated fittings designed for use in accordance with the rules of Canadian Electrical Code, Part I and the National Electrical Code®



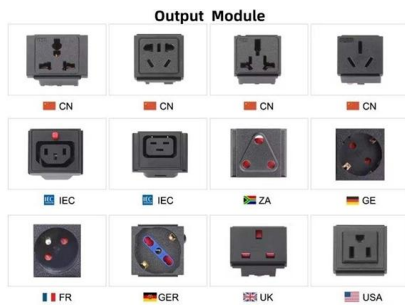
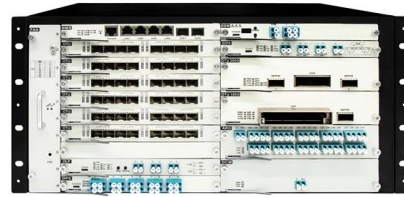
Cable Tray Bolts and Nuts: Secure Your System

Find high-quality cable tray bolts and nuts for secure installations. Explore top suppliers, materials, and sizes. Click to discover reliable solutions for your project needs.



GUIDE CABLE TRAYS TECHNICAL

In accordance with its continuous improvement policy, Legrand reserves the right to change the specifications and illustrations without notice. All illustrations, descriptions and technical information



Why Choose Us

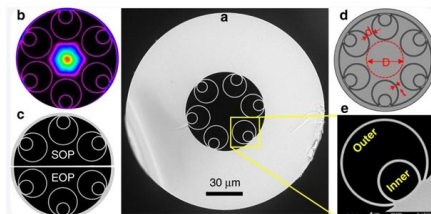
- 20 Years of OEM/ODM**
20 Years factory manufacturing experience.
- Professional R & D team**
30 years experience in electrical electronic engineer.
- Fully Certified**
Our are certified CE, UL, TUV, ISO9001, ISO14001 etc.
- Timely Delivery**
21 production lines, 500+ employees, Timely delivery guaranteed.
- Quality Assurance**
Professional QC team with full process inspection.
- After sales service**
After Sales Service for Customer Satisfaction.

Why Ladder Type Cable Trays Are Perfect for Outdoor Projects?

They are designed to withstand harsh weather conditions and provide long-lasting support and protection for cables. 4. Can ladder type cable trays be customized for different outdoor

How to Select the Right Electric Cable Tray for Your Application

Additionally, opting for a ladder cable tray design would ensure proper ventilation and ease of maintenance, making it ideal for the facility's complex cable management needs. Conclusion



Cable Trays: How to Choose the Right Type for Your

Conclusion Cable trays are an essential component of any cable management system, providing support, protection, and organization for cables.



CABLE MANAGEMENT SYSTEMS - Kiraç Metal

Kiraç Metal is specialised in manufacturing, design and development of Cable Management Systems for commercial and industrial buildings both indoor and



CABLE TRAY

We manufacture a wide range of products capable of providing the characteristics which respond to the proposed application, along with quality of assembly, speed of installation, and cost-saving cable trays.

BZP Cable Tray Bolts and Serrated Flange Nuts

M6x12 BZP Cable Tray Bolts and Serrated Flange Nuts (P) Product Code: N402-306 These tray bolts and serrated flange nuts are specially designed for the rapid



Cable Trays Selection Guide: Types, Features,

Cable trays are components of support systems for power and communications cables and wires. A cable tray system supports and protects both power and



Cable Tray Technical Guide A practical guide to product selection and

Cable tray length is selected based on the load to be supported, the distance between the supports (also referred to as the span), and handling and installation constraints.



10 Things to Consider when Selecting a Cable Tray

We want to see your next construction project succeed whether you choose Snake Tray as your partner for cable management solutions or not

A T& B Cable Tray Metallic cable tray

The benefits of cable tray An evaluation of the costs and benefits of various wiring systems should be done in the design phase. Avoiding the system selection process or deferring it until construction,



Guide to cable support systems

OBO also offers matching load details including informative load tables - using which the suitable cable tray, mesh cable tray or cable ladder can be selected - for the mounting systems such as universal





Connecting Cable Trays: Your Guide to Secure and

Learn common methods for connecting cable trays safely and efficiently. Our guide covers splice plates, quick-connects, and key tips for secure



Roofing Bolts & Square Nuts Cable Tray Bolts, Roofing Bolts Zinc

Grade 8.8 High Tensile Carbon Steel Commonly used with drop in anchors for suspending cable trays from ceilings or can be cut to a required length and used with chemical resin.

12-SDMS-06

4.2.4 The metallic cable tray load safety factor shall be at least 1.5. The cable tray shall also be able to support, without collapse, a 890 N concentrated load at mid span over and above stated cable load



Contact Us

For datasheets, pricing, or custom high-speed optical interconnect solutions, please visit:
<https://www.syropy.com.pl>