

Secondary distribution box without explosion-proof plug





Secondary distribution box without explosion-proof plug



Custom CZ1290 Explosion-proof distribution boxes

CZ Electric Co., Ltd is a Custom CZ1290 Explosion-proof distribution boxes (socket with transformer) suppliers and company, Wring is finished in the box. Product

Certified Explosion-Proof & Flameproof Enclosures , Ex

Explore ATEX/IECEX-certified explosion-proof & flameproof enclosures for hazardous areas. Reliable protection for Class I & II Div 1 zones.

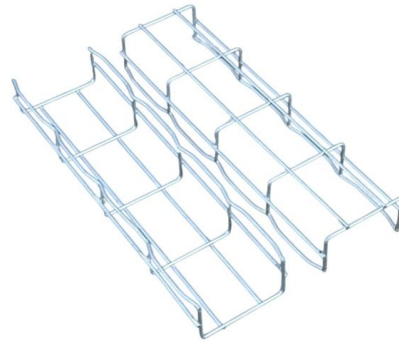


Custom CZ1290 Explosion-proof distribution boxes

CZ1290 Explosion-proof distribution boxes (mobile power branch connection socket box)
Prodcuts Features: Besides the present designation for the full plastic

Explosion-proof Distribution Box

China Explosion-proof Distribution Box catalog of
Exd Explosion Prevention Exe Aluminum Alloy
Junction Box Explosion-Proof Threading Straight
Box Ex Seal Wire Box, Explosion-Proof Type a



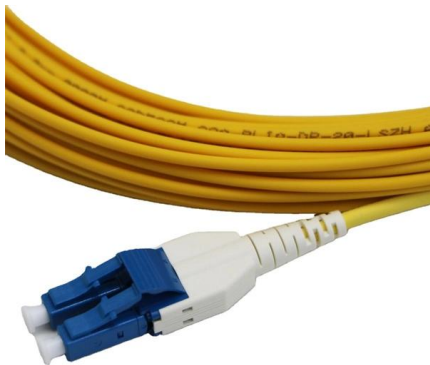
Ex-Proof DB - Orostar

Ex-Proof DB Zone 1 & Zone 21 certified Distribution Board (DB) ATEX and IECEx certified We have effectively designed, integrated, and delivered an Ex d certified



6WAY EXPLOSION PROOF DISTRIBUTION BOXES,

FOR EXPLOSION-PROOF PLUG 16A, 32A CAN BE SELECTED. WRING IS FINISHED IN THE SOCKET BOX. REASONABLE ARRANGEMENT AND



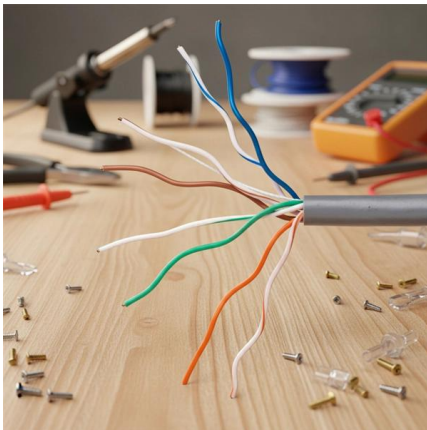
Litost® Industrial Distribution Board with Plug & Socket Box

Litost® Industrial Distribution Board with Plug & Socket Box Enclosures Sheet Metal (Without MCB) 5 Pole Three Phase IP44 Weather Proof Plug & Socket - 32 AMP Brand: Litost -51% INR2,888 (INR577.60 /



Energy Distribution

BARTEC offers one of the most extensive ranges of explosion-proof and substance-resistant components, devices, and systems for controlling, switching, and

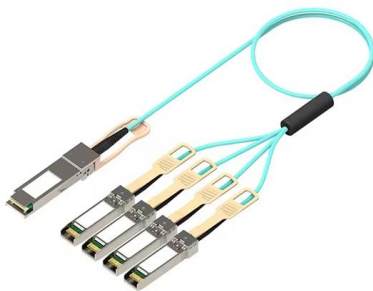


DISTRIBUTION BOARDS

A distribution board (also known as Panel board, breaker panel, electric panel, DB board or DB box) is a component of an electricity supply system that divides an electrical power feed into subsidiary circuits

Explosion Proof Enclosure Comprehensive Guide

Explosion-Proof Distribution box: These smaller components are structurally similar to distribution cabinets. You can use these for the distribution



Hazardous Location Electrical Boxes , McMaster-Carr

Choose from our selection of hazardous location electrical boxes, including outlet boxes and covers, weatherproof outlet boxes and covers, and more.



Explosion protective components & systems , Products , ABB

From its global facilities ABB manufactures a wide range of ATEX, IECEx, UL, CSA approved electrical products for hazardous area applications. These include cable glands and lighting ranges.



Top 3 Facts About Explosion Proof Distribution Box & Electrical

Explosion proof distribution boxes and electrical enclosures are critical components for ensuring safety in hazardous environments. They are designed to contain internal explosions and

Explosion-Proof & Flameproof Enclosures , EX Industries

Explosion-proof (also spelled explosionproof) and flameproof enclosures are solidly constructed junction boxes for use in hazardous area locations. These enclosures



Explosion Proof Splitter Box for Zone 1 , ATEX Certified

ATEX Zone 1 Splitter Box When it comes to power distribution in hazardous areas, safety and compliance are paramount. The ATEX



SA POWERNET EX Splitter Box - ATEX Certified

Constructed with a rugged, waterproof, and dustproof design, the splitter box ensures exceptional durability and reliability. Its compact and lightweight build,



Installation and Wiring of High and Low Voltage Explosion-Proof

B. Secondary Circuit Wiring of High and Low Voltage Explosion-Proof Distribution Boxes: The factory should complete the secondary circuit wiring and relevant tests before shipping.

Portable Splitter Box Hazardous Areas

This enclosure is CE marked to the Atex Directive for safe use in zones 1 and 2



REQUIREMENTS FOR COMPONENTS USED IN INDUSTRIAL

An explosion-proof enclosure marked for Class I hazardous locations (or Type 7). A dust-ignition-proof enclosure marked for Class II hazardous locations (or Type 9), A barrier that provides intrinsically



Portable Splitter Box Hazardous Areas

The Ex splitter box is designed for use in hazardous areas is to get two or more sockets as outputs by one current input, allowing this way us to use more than



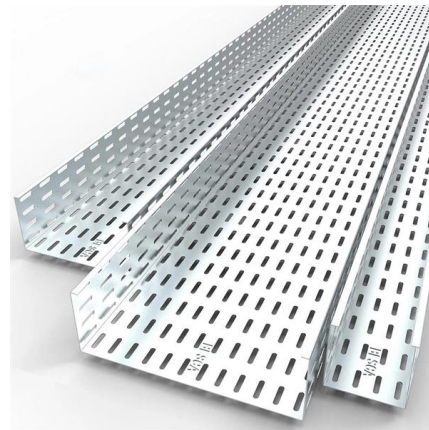
Ex Enclosure Systems

They are completely pre-assembled explosion protection enclosures made of resistant plastic including ATEX and IECEx approval. The special feature of the



2way Explosion Proof Distribution Box for Hazardous Zones

Discover the 16A 220V2way Explosion Proof Distribution Box, ideal for Zone 1 and 21, ensuring safety and reliability in hazardous environments.



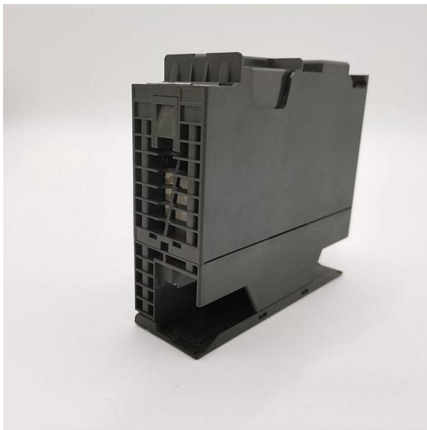
Ex junction and terminal boxes - Explosion-Proof , mlx-ex

GRP Ex terminal boxes What are Ex Terminal Boxes? Ex terminal boxes are protective enclosures used to connect and distribute electrical circuits safely within explosive atmospheres. They serve as



Explosion Proof 2 WAY DISTRIBUTION BOX

Appleton - ATEX 3 WAY - 24V , 110V , 220V / 16A , 32A Explosion Proof Distribution Box ensures safe and reliable power distribution in hazardous areas. Certified for Zone 1, 2 (Gas) and Zone 21, 22



Ex Local Control Stations & Distribution Boxes

Atex control stations, explosion protected control units and distribution boxes made stainless steel maritime grade AISI 316L or AISI 304L. Atex Delvalle provides a

Contact Us

For datasheets, pricing, or custom high-speed optical interconnect solutions, please visit:
<https://www.syropy.com.pl>