

# **Secondary Distribution Box Switch Identification Card**





## Secondary Distribution Box Switch Identification Card

---

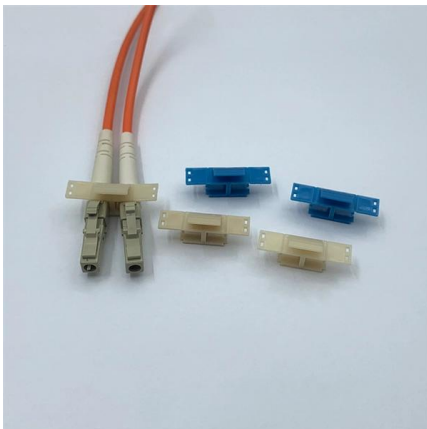


### The difference between the first, second, and third levels of

As for the equipment inside, there are certain differences: the first level distribution cabinet generally has isolation switches, circuit breakers, leakage protectors, etc., the second level

### Uniswitch presentation17032003JN.ppt

Market segment Uniswitch Switchgear for electricity distribution application such as: Secondary substations Manufacturing industry Shopping centres Airports Metro Etc.



### How to (Quickly) Label A Home Electrical Panel Directory

In other words, every single electrical fixture, switch and plug in your house is connected to a circuit or fuse that runs to your electrical panel (also

### NEC Article 408: Switchboards, Switchgear, and Panelboards

A directory must be provided for each switchboard, switchgear, and panelboard to identify the circuit served by each overcurrent device. This directory must be legible and permanently installed on the



### Understanding the Electrical Sub Panel: A Clear

Anatomy of an Electrical Sub Panel An electrical sub panel, also known as a sub panel box or breaker box, is an essential component of an electrical system. It

### Distribution Box Guide: Types, Components & Solutions

Understand distribution boxes (DB boxes) in 5 minutes. Learn about types, components, functions, and uses. Find the perfect DB box for your needs.



### Statista

Find statistics, consumer survey results and industry studies from over 22,500 sources on over 60,000 topics on the internet's leading statistics database

### 10 Distribution Board Types Explained [May

Discover 10 types of distribution boards, from Main Distribution Boards to Fuse Boxes. Learn about their features, and applications,



### Primary and secondary power distribution systems

Secondary selective service achieves similar results by using switches on secondary voltages rather than primary voltages. With secondary selective



### Electrical

Subclassification labels for all emergency power system equipment as listed for equipment identification labels, and all junction and pull boxes. Fire Alarm equipment per the Fire Alarm specification



### Interpretation of the Secondary Diagrams of the Box-Type Substation

The secondary circuit refers to the low-voltage circuit used for control, protection, measurement, and signal indication, which is different from the primary circuit (main circuit, carrying large current).



## A Complete Guide to Distribution Boards

Read this comprehensive buyer's guide on distribution boards, explaining what they are, their uses, types, how to connect distribution boards,



### The Meaning and Function of Primary, Secondary, and Tertiary

The equipment within these boxes varies: primary distribution cabinets usually contain isolating switches, circuit breakers, and residual current devices (RCDs); secondary cabinets contain

### Distribution switchboards

Distribution switchboards, including the Main LV Switchboard (MLVS), are critical to the dependability of an electrical installation. They must comply with well-defined standards governing



### Electrical Identification

It is intended to provide easy identification of a component's location, power supply, and load information from the equipment label solely and to make it easy to trace equipment power sources and loads for



## Distribution Boards

Distribution boards, often referred to as electrical panels or breaker boxes, serve as the nerve center of any electrical system. Here we explore the crucial parts of a distribution board and gain insights into

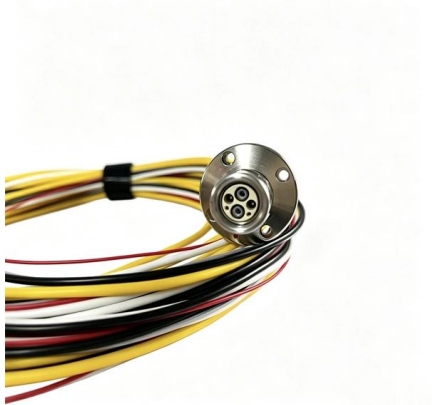
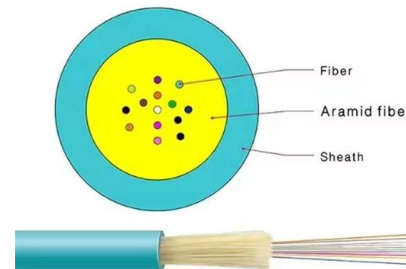


### Wiring of the Distribution Board From Energy Meter to

How to Wire a Distribution Board? Distribution Board also known as "Panel Board", "Switch & Fuse Board" or "Consumer Unit" is a box installed in the building

### Primary and secondary power distribution systems

Primary distribution systems Primary distribution systems consist of feeders that deliver power from distribution substations to distribution



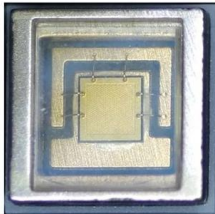
### Power Distribution Box Essentials: Functions, Types

Every distribution box is specially equipped to handle unique tasks, power clean-up and in an efficient manner in a wide range of settings. 5)

PDF file

## Circuit Numbering and Labeling for Electrical Equipment

Identify all drives, starters, disconnect switches, and control devices with a plate or thermal-transfer label. Match identification exactly to equipment legend noted on the drawings.



## Interpretation of the Secondary Diagrams of the Box-Type Substation

The following is a professional technical analysis of the **\*\*interpretation of the secondary diagrams of the box-type substation power distribution cabinet\*\***. Combining with the Electrical Drafting Standard

## Policies, Procedures, and Forms Updates

The Postal Service is revising section 608.10.4, "Acceptable Secondary Forms of Identification," to reflect that the Postal Service no longer accepts utility bills as an acceptable form of



## Microsoft Word

Identify the incoming breakers or switches on high voltage switchgear and fused switch lineups with the utility or University substation source circuit identification number and location. A schedule or



## 26 05 53 IDENTIFICATION FOR ELECTRICAL SYSTEMS

IDENTIFICATION FOR ELECTRICAL SYSTEMS 26 05 53 - 1 G. For disconnecting means where power can be backfed (like tie breaker) provide permanent sign at disconnecting



### SafePlus 12

To configure switchgear with more than 5 modules, the required number of tanks can be joined together by use of an external busbar. Alternatively, the complete switchgear can be configured fully modular

### Wiley Online Library , Scientific research articles, journals, books

Hier sollte eine Beschreibung angezeigt werden, diese Seite lässt dies jedoch nicht zu.



## Contact Us

---

For datasheets, pricing, or custom high-speed optical interconnect solutions, please visit:  
<https://www.syropy.com.pl>