

Sealing the cable opening in the distribution box



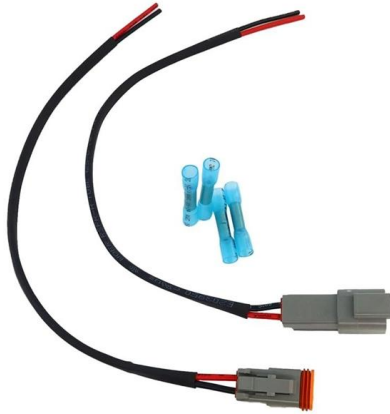


Overview

Effective techniques for sealing cable entry points involve using high-quality sealants, employing grommets or cable glands, and ensuring a clean and secure installation. This means that the technical equipment is protected against corrosion and the operational safety is increased at the same time. Our adaptable solution Multidiameter™, based on sealing modules with removable layers, makes installation easy and.



Sealing the cable opening in the distribution box



Electrial Wiring and Air Sealing

Installing electrical boxes, light cans and pulling cables is an important task, but a critical detail is to make sure that as these are installed, they are also properly air sealed.

Air Sealing Electrical Wiring

For wall-mounted electrical boxes, caulk all openings in the box (including around the wire penetrations) and seal around the box where it meets the drywall. Seal wiring gaps and holes



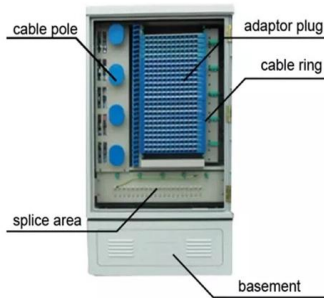
trafostationen_en_151202 dd

For sealing cables and cable ducts, there are different system covers and system seals available, which are connected via the integrated bayonet system. All cable entries are pressure tight and sealed with



SEALING OF CONTROL CABINETS & ELECTRICAL DISTRIBUTION BOXES

Automated sealing solution for control cabinet construction The lifelines of highly automated industrial production for electrical distribution and for the control and safety technology of manufacturing plants



Electrical Enclosure Seals , McMaster-Carr

Choose from our selection of electrical enclosure seals, including gasket tape for enclosures, washdown hole plugs, and more. Same and Next Day Delivery.

The correct use of cable glands

Cable glands are chosen according to the diameter of the cable. Sealing is guaranteed by the compression of a rubber gasket that squeezes on the external



The installation requirements for the distribution box

Learn how to install a distribution box safely and correctly. Covers wiring, placement, standards, and expert tips for a compliant setup.

CABLE ENTRY SEALS



Roxtec sealing solutions allow you to route and seal pre terminated cables without cutting connectors. Roxtec seals have large openings making them ideal for use with pre terminated cables. You can



OM3 Fiber Patch Cable Family



Cable entry seals for Enclosures & Cabinets **ROXTEC**

You can seal cables or pipes of several different sizes simply by peeling off layers

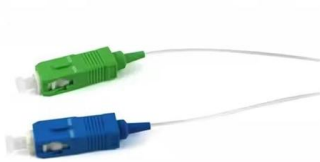
Entry seals for electrical cabinets and enclosures

Roxtec entry seals are an excellent option for cable management in waterproof enclosures and allow the routing of multiple electrical cables or pipes through each opening in an



Entry seal for electrical cabinet enclosures , **Roxtec**

Roxtec entry seals are an excellent option for cable management in waterproof enclosures and allow the routing of multiple electrical cables or pipes





Electrical Distribution Box Installation Mistakes

The Electrical Distribution Box is a very important part of the power system, improper installation will cause a lot of danger and loss. Here are some things that go



Cable Entry Seals 101: Everything You Need to Know

Cable entry seals may be small, but they play a huge role in ensuring the safety, reliability, and longevity of your electrical systems. By understanding the different

Best Materials For Sealing Cable Entry Points

Cable entry sealing foam: Protecting cable entry areas is essential but which material is best? Discover our cable entry sealing foam.



Study on Cable Hole Sealing Device for Distribution Box

Published in: 2022 China International Conference on Electricity Distribution (CICED)
Article #: Date of Conference: 07-08 September 2022 Date Added to IEEE Xplore: 02 November 2022



Cable Entry Seals: A Complete Beginner's Guide

Cable entry seals play a crucial role in protecting electrical systems and enclosures from environmental hazards like dust, moisture, and temperature changes.



Effective Techniques for Sealing Cable Entry Points

Effective techniques for sealing cable entry points involve using high-quality sealants, employing grommets or cable glands, and ensuring a clean and secure installation.

Sealing electrical boxes after construction

So after you have addressed all other issues, and you are down to the last bit of air sealing, and air is coming through the electrical box, what is the best way to seal them? There seem



Length:35mm
Small-end inner diameter:3.8mm
Large-end inner diameter:4.0mm
Outer diameter:6.0mm



Business Standard

Hier sollte eine Beschreibung angezeigt werden, diese Seite lässt dies jedoch nicht zu.

Sealing cable glands: standards and



To seal the input in a private house or cottage, fire polyurethane foam is most often used, evenly distributing it in the pipe around the cable. After hardening, the mounting foam is cut off and partially



Cable and pipe seals for power transmission and distribution

Secure a safe and reliable grid Benefit from the world's most innovative and flexible cable and pipe transits. Standardize with Roxtec penetration seals in different applications throughout the entire

A complete analysis of the cable sealing process for waterproof

In waterproof junction box, cable waterproofing is very important, especially in outdoor or humid environments. Here are several common cable waterproofing methods: Sealing glue: Use



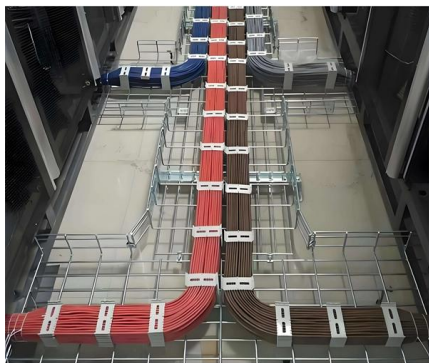
EO-1100: Sealing of Service Ducts, Entrances, and Bus Openings in

Sealing against water and gas penetration is required in service duct(s) and bus opening(s) in structures housing distribution system electrical equipment. Application of sealing material prevents flooding of



SEALING OF CONTROL CABINETS~& ELECTRICAL DISTRIBUTION BOXES

Automated sealing solution for control cabinet construction The lifelines of highly automated industrial production for electrical distribution and for the control and safety technology of manufacturing plants



Cable Entry Seals for Sealing Protection , TE Connectivity

Our cable entry seals are available in standard and threaded types, have factory-applied adhesive, and can accommodate single or multiple cables up to 2.5

Cable entry seal system - better than gland, plate

With just one Roxtec entry seal for high cable density applications, you can replace more than 30 conventional cable glands and be sure to have a



Cable Entry Seals 101: Everything You Need to Know

2. Multi-Entry Seals Designed to accommodate multiple cables through a single opening. Reduce the number of cutouts needed, saving space and simplifying



Contact Us

For datasheets, pricing, or custom high-speed optical interconnect solutions, please visit:

<https://www.syropy.com.pl>