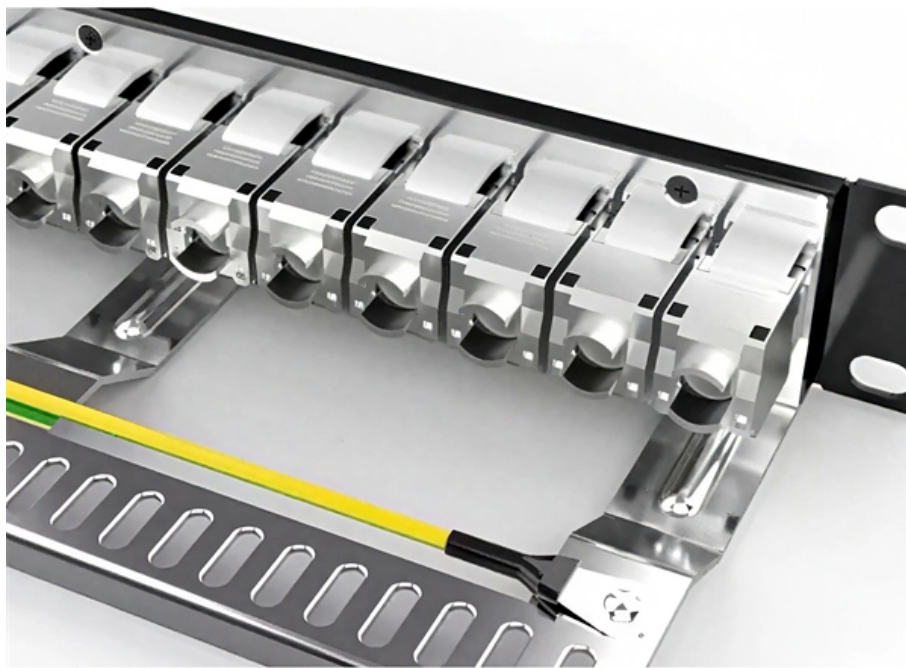


Safety Standard Requirements for Secondary Distribution Boxes





Safety Standard Requirements for Secondary Distribution Boxes



Secondary unit substations design guide

As a result of locating power transformers and their close-coupled secondary switchboards as close as possible to the areas of load concentration, the secondary distribution

Secondary Distribution Substations; Common Clauses

7.1 Secondary distributions plant under this Design Standard is totally enclosed in metalwork. The levels of Electrical and Magnetic Field (EMF) at these substations is no greater than present in most

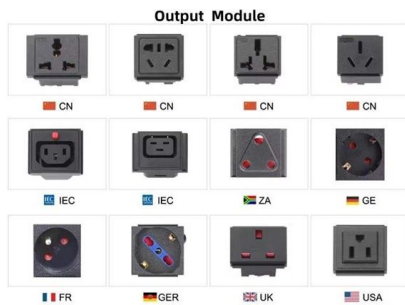


Requirements And Specifications For Installation Of

The installation requirements and specifications of Distribution box involve many aspects, including site selection, fixing method, wiring specifications

OSHA Secondary Containment Requirements for

Learn about OSHA secondary containment requirements for safe storage of hazardous chemicals & how to comply with the guidelines for effective



Why Choose Us



Key Material Requirements for Distribution Box

Learn the key material requirements for distribution box, Discover how the right materials ensure long-lasting performance and safety.

Detailed introduction of safety requirements for distribution box

Safety control requirements for distribution box:
1. The low-voltage power supply system at the construction site shall be equipped with a general distribution box, a distribution box and a



Installation Precautions for Substation Secondary

In a substation, the secondary equipment provides the functional interface for the control, supervision, and protection of the network. The



Detailed explanation of the installation specifications and standards

This article will focus on the definition, applicable environment, installation specifications and standards, and precautions of "secondary explosion-proof distribution box", and comprehensively analyze its



Secondary Distribution Substations

They do not cover installations for connections for plant feeding generators. They do however include the provisions required for supply restoration using portable generators.

Understanding Distribution Boxes: A Comprehensive Guide

Distribution box What Is a Distribution Box Used For A distribution box is used to receive electrical power from a main supply and distribute it to



Design requirements and standards for low voltage

You can show compliance by designing and testing your boxes to meet published safety standards, such as IEC 62368-1. The LVD also requires you to



Safety requirements for distribution box

4? All kinds of electrical components and leakage protectors used in distribution boxes at all levels shall meet the quality requirements of national standards. 5? The leakage protectors in distribution boxes



Distribution materials specification-construction standard for

REV.



Distribution materials specification-construction standard for

Provides construction standards and specifications for materials used in underground distribution networks.

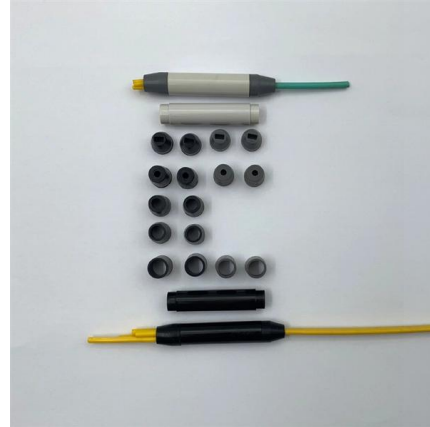


Technical Requirements for Distribution Box in Electrical Industry

Different industries, different products have different technical requirements, in the electrical industry, distribution boxes, distribution boxes are no exception, distribution boxes, distribution boxes are also

Distribution Technical Standards and

The Primary Service Requirements (formerly the Primary Guide) R5 and associated advisory 2026-019 have been released on 2026-03-13 ES43 B1-03 and B1-15 and have been revised



Secondary Systems Design Standard

This standard covers the secondary system schemes, standard design references and design parameters required for TransGrid to safely protect and control high voltage equipment at 500kV and



Power Distribution Boxes Explained Simply

Discover the essentials of a Power Distribution Box--how it works, key types, benefits, and tips to ensure safe, efficient electrical power management.



How To Maximize Worksite Safety When Using Power Distribution Boxes

Safety Standards for Temporary Power Distribution It's important to make sure you review all OSHA regulations and other applicable standards when implementing temporary power





Electrical Distribution Safety, O Reg 22/04

"secondary distribution line" means an electricity distribution line conveying electricity at 750 volts or less phase to phase; "vault" means an isolated enclosure, either above or below ground,



Cautions and Requirements for Installation of

When the distribution box is installed and constructed, some safety operation items have become the primary premise of the work. Therefore, there are certain

Installation requirements for distribution boxes

Distribution boxes shall be made of non-combustible materials; open distribution boards may be installed in production places and offices with low electric shock risk; enclosed cabinets shall



Installation Standards and Safety Precautions for Distribution Boxes

Switch box shall be distributed by the final sub-distribution box. 2. The power distribution box and switch box must be rainproof and dustproof. 3. When the construction site stops working for



ES54 S2-01 Secondary Three-Phase Services 120/208 V and

Application This standard describes requirements for installing secondary three-phase services up to 1600 A 120/208 V and 347/600 V supply on private property.



Power Distribution Box Essentials: Functions, Types

Selecting the proper distribution box will guarantee the reliable and safe management of power according to the user's requirements. 8) Why need an

Contact Us

For datasheets, pricing, or custom high-speed optical interconnect solutions, please visit:
<https://www.syropy.com.pl>