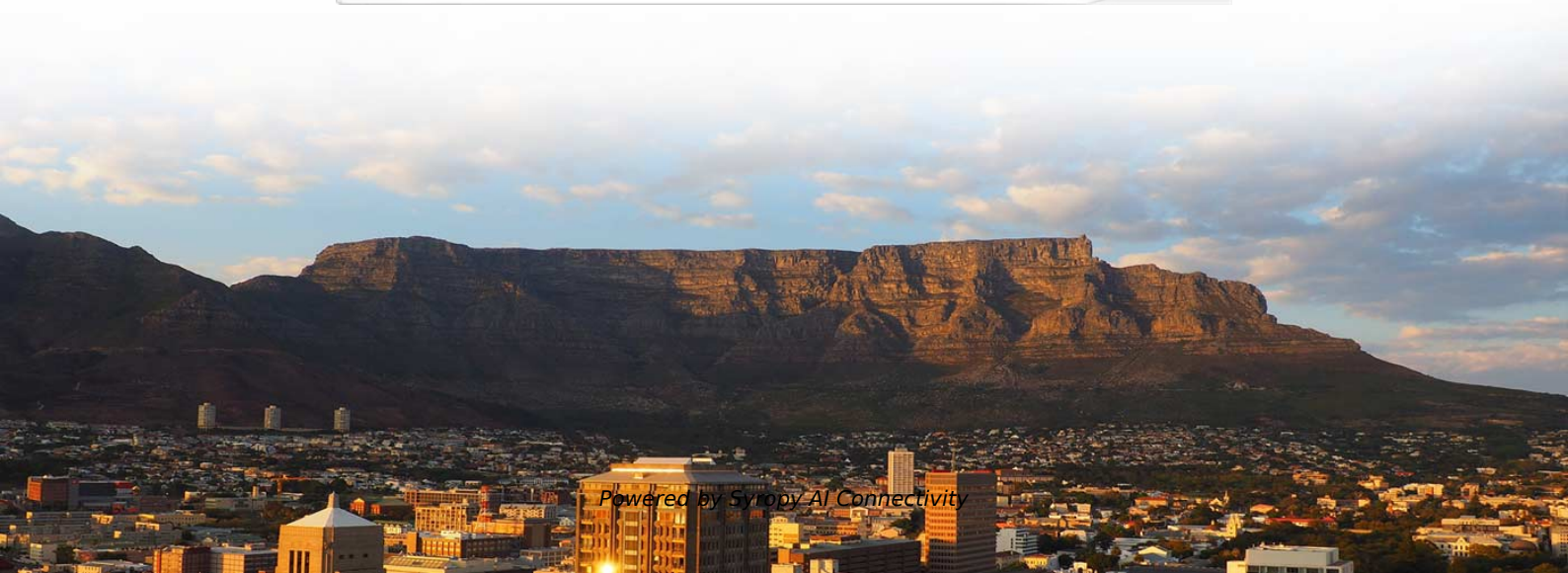


Safety Measures for Tower Communication Operations





Overview

Communication tower workers must wear personal protective equipment (PPE) at all times while on the job. The safety gear includes hard hats, approved eye protection, gloves, and specific types of footwear. Pursuant to the OSH Act, employers must comply with safety and health standards and regulations issued and enforced either by OSHA or by an OSHA-approved state plan. In addition, the Act's General Duty Clause, Section 5(a) (1), requires employers to provide their employees with a workplace free. They are designed to ensure the structural integrity of towers and the safety of all personnel. Recent research and the author's personal experience unveiled four major occupational hazards related to work on telecommunications towers: falling objects, falls from height, electrocution, and animal attacks.



Safety Measures for Tower Communication Operations

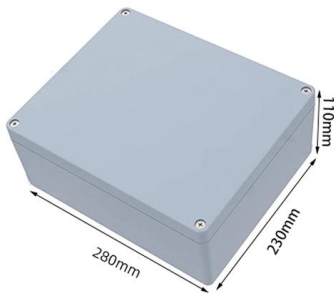


Communication Towers

Overview Prior to the 1980s, communication and broadcast tower erection, servicing and maintenance was a very small and highly specialized industry. Over the past 30 years, the growing demand for

Working at Height in the Telecommunication Industry:

Working at height in the telecommunications industry can be hazardous, but by following strict safety procedures, proper training, and



Occupational Safety Risks During Maintenance of

Discover the occupational safety risks of maintaining telecommunication towers and explore strategies to enhance worker protection.

Occupational safety risks during maintenance of tele-communication towers

Occupational safety risks during maintenance of tele-communication towers
Raphael Friederich
Ribeiro, Béda Barkokébas Juniora, Eliane Maria Gorga Lagoa,



A Pilot's Guide to Safe Surface Operations Introducti

Effective communications are a key component of every safe aircraft operation - both in the air and on the ground. Communication not only involves speaking, it also involves active listening. This booklet

Communication Tower Best Pratices

Section II presents best practice bullets that identify generally applicable approaches to improving communication tower worker safety.



Occupational safety risks during maintenance of

Research method: Three teams were assessed during their maintenance work. The risks of accidents were identified through self-made



A Guide to Understanding Telecom Tower Safety Standards

An expert guide to telecom tower safety standards. Explore the critical rules for structural design, construction, maintenance, and RF exposure to ensure network safety.



Communication Tower Safety Best Practices

This document provides best practices for communication tower safety gathered from industry stakeholders. It outlines general best practices such as establishing comprehensive safety and

OSHA Booklet Compiles Best Practices for

OSHA recently published a booklet that provides safety information and best practices for preventing injuries among communication tower workers.



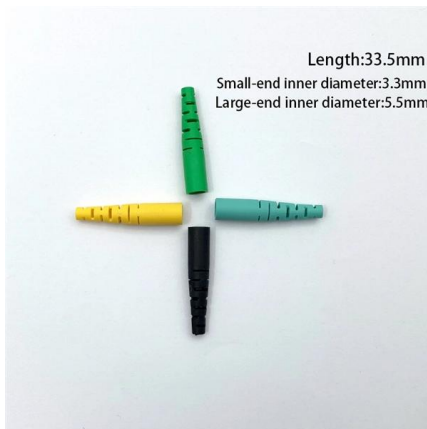
Ensuring Security and Safety in Tower Operations. Why

In the world of telecommunications, tower operations form the backbone of network connectivity. These towers -- those tall, steel structures you



Communication Tower Safety Involves Many

Improve communication tower safety! Learn about OSHA guidelines, fall protection, & visual safety tools to reduce accidents.

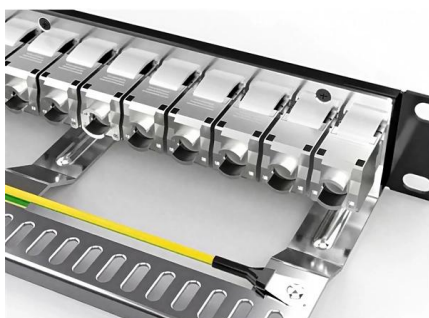


Recommended Best Practices for Communication Tower Design,

NOTE: These recommendations replace all previous recommendations for communication tower construction and operation. These recommendations have been modified and updated from previous

Safety in the Tower Climbing Telecommunications Field

Over the years, safety protocols for tower climbers have undergone significant advancements to minimize risks and protect these brave professionals



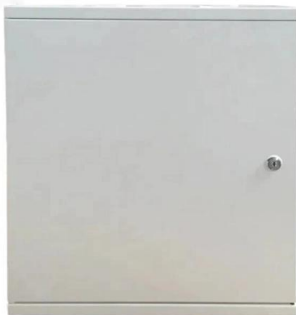
Communication Tower Safety

OSHA is aware of employee safety risks in communication tower construction and maintenance activities and is requesting information from the public on these risks. This RFI requests



Enhancing Safety at Tower Sites

This guide dives into the safety measures that can transform towers from potential hazards into safe, efficient workplaces.



Communication Tower Worker Safety 101

All employers must take steps to ensure that their workers are well-trained, supervised, and equipped with the required safety gear. By prioritizing safety and

Microsoft Word

The guide is a result of the long-standing commitment of both agencies to ensuring the safety of tower workers. In the spirit of good government and cooperation, our agencies have hosted workshops with



Occupational safety risks during maintenance of

Only 20% of occupational safety items were in conformity. Implications for theory and practice: Suggestions on control measures were given



Final

Service Guidance on the Siting, Construction, Operation, and Decommissioning of Communication Towers. Personal communication from Clark (Director, US Department of Interior Fish and Wildlife



Telecom Industry Safety and Compliance , EHS

Safe, compliant, and resilient telecom operations with TECH EHS. From tower safety audits to digital permit systems, smart EHS solutions tailored for telecom

ITPro Today, Network Computing, IoT World Today combine

ITPro Today, Network Computing and IoT World Today have combined with TechTarget . The page you are looking for may no longer exist.



Communication Tower Safety: Preventing falls and other

Fortunately, raising awareness about communication tower hazards and adhering to safety protocols can greatly reduce the risk. When erecting or working on

Working at Heights: Mast and Tower Safety for Telco

Learn critical mast and tower safety protocols for



ISP & telco technicians, ensuring structural integrity, fall protection, and safe operations.



Contact Us

For datasheets, pricing, or custom high-speed optical interconnect solutions, please visit:

<https://www.syropy.com.pl>