

SFP optical port optical module





Overview

Small Form-factor Pluggable (SFP) is a compact, hot-pluggable network interface module format used for both telecommunication and data communications applications. SFP types SFP transceivers are available with a variety of transmitter and receiver specifications, allowing users to select the appropriate transceiver for each link to provide the required optical or electrical reach over.



SFP optical port optical module



Optical Module Working Principle , SFP Transceiver Technical Guide

Understanding the working principle of optical modules--especially SFP transceivers--is critical for network engineers, data center operators, and telecom professionals tasked with building and

SFP Fiber Optic Connector Types: LC, SC, MPO Explained

Most SFP fiber optic modules use LC connectors, while SC connectors are mainly found in legacy networks and MPO/MTP connectors are used for high-density cabling rather than directly on



SFP Optical Module Specifications: Standards & Performance

These modules, including SFP, SFP+, and SFP28, are widely used in enterprise networks, data centers, and carrier-grade deployments to ensure high-speed, reliable connectivity.

Transceivers Explained: SFP vs SFP+ vs SFP28 vs QSFP+ vs QSFP28

In this guide, we break down the differences between these modules and help you make the best decision for your infrastructure--whether you're upgrading a legacy system, increasing the



What are electrical port optical modules?

Electrical port module is also known as optical port to electrical port module, photoelectric conversion optical module, it is a kind of module that supports hot-swappable, the package form is SFP, and the

The Ultimate Guide to SFP Modules (2026): Types, Speeds

SFP (Small Form-factor Pluggable) is a compact, hot-pluggable network interface module used to connect network devices (switches, routers, firewalls) to fiber optic or copper cables.



Accortec Extreme Networks 1-Port 1000Base-SX SFP Module

10051-ACC - Accortec Extreme Networks 1-port 1000base-sx Sfp Module - For Data Networking - 1 X Lc 1000base-sx - Optical Fiber - Multi-mode - Gigabit Ethernet

SFP Optical Transceiver , SFP Optical



Module , Perle

Perle SFP Optical Transceivers can be used and interchanged on a wide variety of Cisco or MSA compliant SFP products. They can be intermixed in combinations



SFP vs. QSFP: Differences, Use Cases, and How to Choose

Compare SFP vs. QSFP transceivers: key differences, speeds, distances, costs, and expert guidance to choose the right module for your network architecture.

What Is an SFP Module? Complete Guide

SFP (Small Form-factor Pluggable) modules are compact, hot-swappable transceivers used to connect network devices such as switches,



Arista Optics Modules and Cables

To accommodate an increasing spectrum of applications, Arista offers a wide choice of OSFP, QSFP-DD, QSFP, SFP, SFP-DD and DSFP transceivers and cables that comply with industry standards,



Are 10G Optical Modules Compatible with Gigabit Optical Ports

Second, whether 10G optical modules are compatible with gigabit SFP optical ports Here we look at the following aspects of the 10G optical module is compatible with Gigabit SFP optical port.

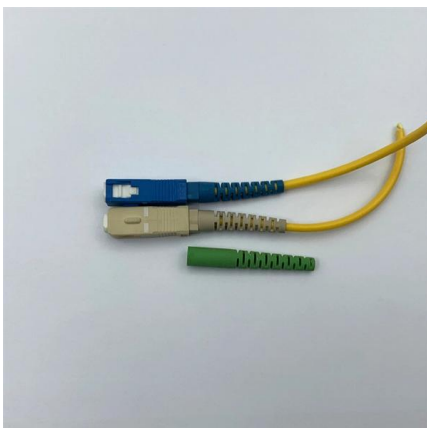
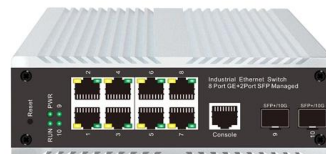


SFP vs SFP+: A Complete Guide to Compatibility and

SFP+ is the enhanced version of SFP, supporting 10Gbps instead of 1Gbps. In most scenarios, an SFP module can operate in an SFP+ port, but the

Optical Transceiver: SFP vs SFP+ vs QSFP28 vs QSFP-DD

This article provides a comprehensive comparison of mainstream optical transceivers, including SFP, SFP+, QSFP+, QSFP28, and QSFP-DD. It explains their technical differences,



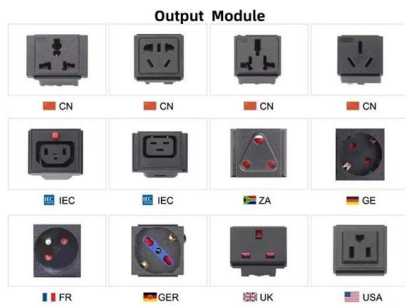
What is SFP Port? Everything You Need to Know

What is an SFP port? The SFP port also refers to a Small Form-factor Pluggable port. It is a compact mechanical slot that accepts an SFP module



Learn how to choose the right SFP module for your network. Avoid

Learn how to choose the right SFP module for your network and avoid common compatibility mistakes. This practical guide explains SR vs LR, singlemode vs multimode,

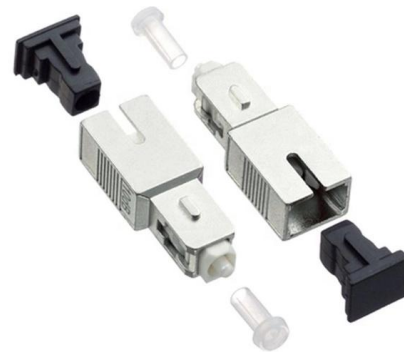


Why Choose Us

- 20 Years of OEM/ODM**
20 Years factory manufacturing experience.
- Professional R & D team**
30 years experience in optical electronic engineer.
- Fully Certified**
Our are certified CE, UL, TUV, ISO9001, ISO13193 etc.
- Timely Delivery**
21 production lines, 500+ employees, Timely delivery guaranteed.
- Quality Assurance**
Professional QC team with full process inspection.
- After-sales service**
After-Sales Service for Customer Satisfaction.

Gigabit Ethernet Module: SFP to RJ45 Solution

The SFP to RJ45 solution involves inserting a Gigabit Ethernet module into the Gigabit optical port of a device to connect it to an Ethernet cable, which is then connected to the electrical



SFP Module Guide: SFP vs SFP+ vs SFP28 vs QSFP and How to

Learn what an SFP module is, how SFP, SFP+, SFP28, and QSFP differ, and how to choose the right module for speed, distance, fiber type, and compatibility.



10G SFP+ Module Vs 10G RJ45 Module

10G Optical Port (SFP+): A compact fiber interface that requires two additional components: an SFP+ transceiver module and a fiber patch cord. It transmits data via light signals



What is an SFP Optical Module? The Complete Guide to

The SFP optical module is a standardized, modular assembly designed to be quickly installed or removed from a device's port without requiring

HPE 24-port 1GbE SFP MACsec v3 z12 Module

Shop HP HPE 24 port 1GbE SFP MACsec v3 z12 Module For Data Networking, Optical NetworkOptical FiberGigabit Ethernet Unknown products at Best Buy. Find low everyday prices and buy online for



The Ultimate Guide to SFP Modules (2026): Types,

What is an SFP? SFP (Small Form-factor Pluggable) is a compact, hot-pluggable network interface module used to connect network devices (switches, routers,



What Is an SFP Module? -- Complete Guide to SFP, SFP+ & SFP28

SFP modules are removable, standardized optical transceivers that enable modular media deployment. They convert signals between electrical and optical media and can support copper or fiber connections.



Cisco 10GBASE SFP+ Modules Data Sheet

The Cisco 10GBASE SFP+ modules give you a wide variety of 10 Gigabit Ethernet connectivity options for data center, enterprise wiring closet, and



Contact Us

For datasheets, pricing, or custom high-speed optical interconnect solutions, please visit:
<https://www.syropy.com.pl>