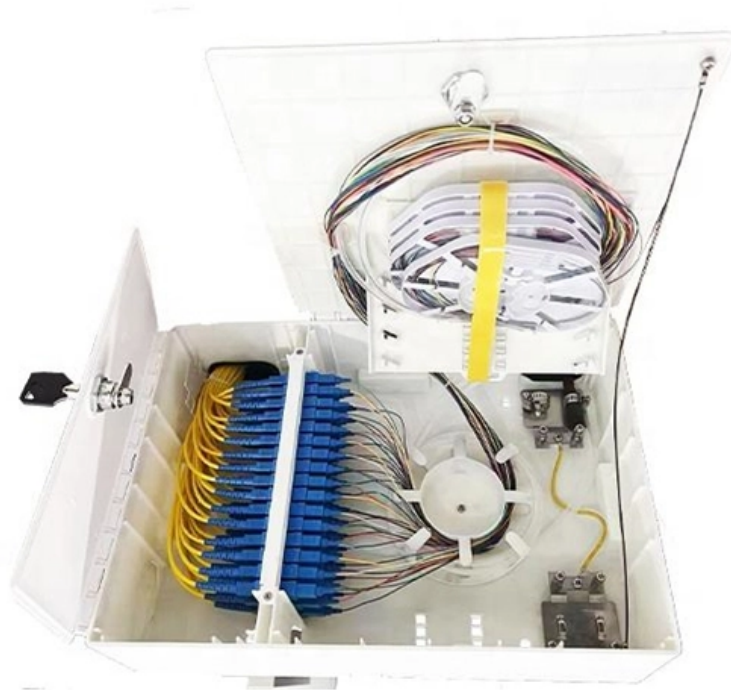


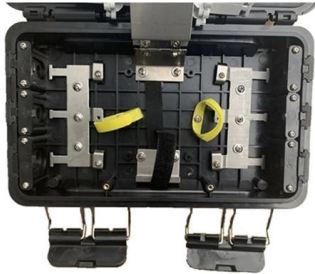
# **SFP optical module single core**





## SFP optical module single core

---

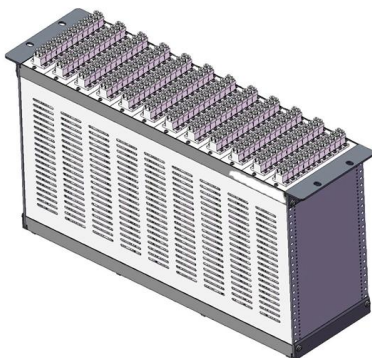
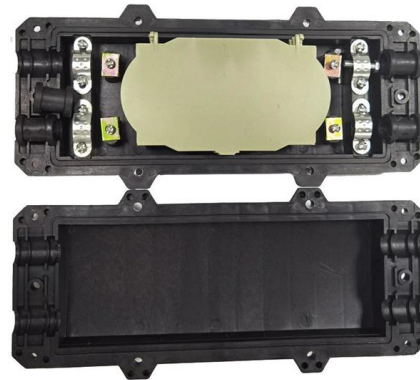


### Top Optical Modules for POTN Deployment: SFP, QSFP, and OSFP

Modern optical transport networks are the nervous system of digital infrastructure. As data demand continues to multiply, choosing the right optical module becomes a crucial decision in

### What Is Inside an SFP Transceiver? How Optical Modules Work in

But what exactly happens inside an SFP transceiver? Understanding how these modules work can help network engineers and IT buyers make better decisions when selecting, deploying, or



### SFP Modules: Types, Selection Guide & Applications

This guide demystifies SFP modules, exploring their design, types, key differences from related modules (like SFP+, SFP28, and QSFP), and actionable tips for selecting the right one for

### What Is an SFP Module? (Comprehensive Guide Including Fiber Optic

Single-mode optical modules: Matched with single-mode fibers, with a core diameter of 9um, excellent transmission performance, supporting long-distance transmission, used in scenarios such as



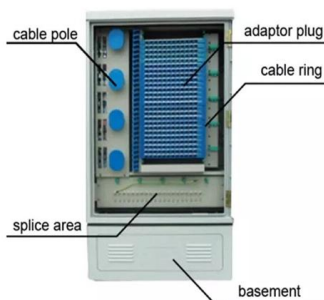
### SFP Module - Optcore

SFP Module SFP module is a small form factor, compact, hot-pluggable optical transceiver, also called mini-GBIC. Our SFP module comply with the SFF-8472 MSA (Multi-Sourcing Agreement), CE, FCC,



### 1G SFP LX 1310nm 20km Single mode Transceiver

Generic SFP-1G-LX Compatible 1000BASE-LX/LH SFP 1310nm 10km-20km Transceiver supports 1G gigabit Ethernet throughput over singlemode fiber (SMF)



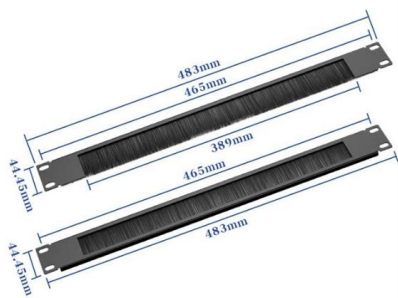
### optical transceiver sfp+ 10g single mode module 1310nm 10km lc

Upgrade networks with our optical transceiver sfp+ 10g single mode module 1310nm 10km lc. This LC transceiver delivers effortless 10km connectivity for data centers and servers.



## The Ultimate Guide to SFP Modules (2026): Types, Speeds

Confused by SFP vs SFP+? Read the definitive 2026 guide on SFP modules. We explain Single Mode vs Multimode, DDM diagnostics, and how to choose the right transceiver for Cisco, Juniper, and more.

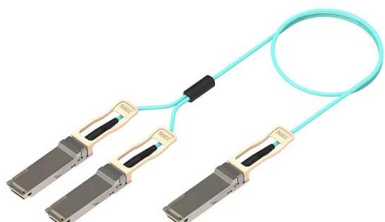


## How to Check If My SFP Is Single Mode or Multimode

In fiber networks, SFP modules are usually split into single-mode and multimode. They might look almost identical from the outside, but knowing the difference is important. If you want to

## Optical Transceiver: SFP vs SFP+ vs QSFP28 vs QSFP-DD

This article provides a comprehensive comparison of mainstream optical transceivers, including SFP, SFP+, QSFP+, QSFP28, and QSFP-DD. It explains their technical differences,



## The Most Comprehensive Guide Of Optical Modules

Explore the ultimate guide to optical modules. Learn types, functions, performance metrics & how to choose the right module for your fiber network.



## What Are SFP Transceiver Modules? , 1G & 10G Networking

Learn how 1G & 10G SFP Transceiver Modules, single-mode, multimode, BiDi optical solutions for enterprise, telecom, and data center networks.



### How to Choose SFP Module for Compatibility, Speed,

Learn how to choose the right SFP module based on compatibility, speed, fiber type, wavelength, and distance. Practical guide for engineers and IT

### Single Mode SFP Transceiver , Optcore

High-performance single mode SFP transceivers for long-distance networking applications. Find the perfect SFP module for your switches and devices.



### Optic Modules Datasheet

datasheet is intended to guide the user through the various options available when choosing an optic module for a given platform depending on the architecture. The following table lists the different

### 1G SFP Transceiver , Difference SMF vs. MMF



Introduction to singlemode (SMF) SFP modules  
SMF SFPs use singlemode optical fiber with a 9-micron core and a 125-micron cladding. It typically transmits signals at 1310 nm and 1550



### Learn how to choose the right SFP module for your network. Avoid

Learn how to choose the right SFP module for your network and avoid common compatibility mistakes. This practical guide explains SR vs LR, singlemode vs multimode,

### SFP Module Introduction: SFP meaning, Fiber SFP and

SFP module is the core part of the optical fiber communication networks. This post will introduce everything you should know about SFP transceivers, including what



### Single Mode SFP Transceiver: Complete Guide Explained

A single mode SFP module supports long-haul links thanks to its narrow fiber core and laser-based signal propagation, which minimizes modal dispersion and signal loss.



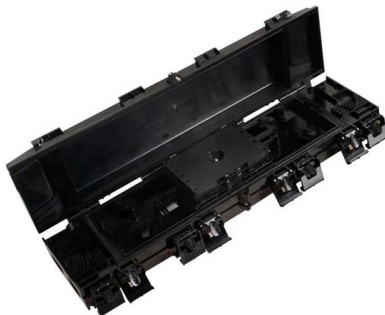
### **XG-SFP-LR-SM1310 10GBASE-LR SFP+ 1310-nm 10-km DOM**

The XG-SFP-LR-SM1310 is aligned to IEEE 10GBASE-LR optical specifications and supports a link length of up to 10 kilometers over a single-mode fiber (SMF) with an LC connector. It adopts the



### **Understanding SFP Modules: Wavelength and Color Codes**

? Understanding SFP Optical Modules - Wavelength & Pull Ring Color Codes When working with networking and fiber optics, SFP (Small Form-Factor Pluggable) modules are crucial for connecting



### **What is an SFP Optical Module? The Complete Guide to**

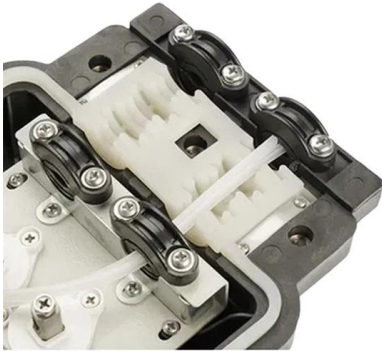
Understand the core function, compare data rates (1G to 25G), learn critical compatibility rules, and follow our 5-step checklist for selecting the perfect





## **Understanding 5G Communication Optical Transceivers:**

From the fronthaul of base stations to the backhaul connecting core networks, optical transceivers are essential for enabling 5G's promised bandwidth



## **Contact Us**

---

For datasheets, pricing, or custom high-speed optical interconnect solutions, please visit:  
<https://www.syropy.com.pl>