

SFP Optical Module Application Circuit Design



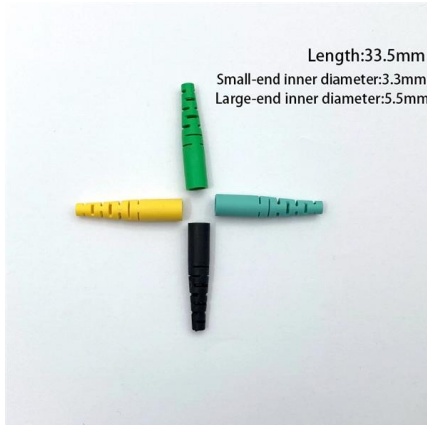


Overview

This comprehensive guide breaks down the internal structure, core components (TOSA, ROSA, lasers), and operational mechanisms of SFP optical modules, enriched with technical insights and real-world applications. This evaluation board is a complete SFP+ module as defined in the SFP+ MSA document. The design uses Micrel's MIC3003 controller, the 10G DFB/FP laser driver SY88022AL, and any of the following 10G limiting amplifiers: SY88053C/073L. 17901 Von Karman Avenue, Suite 600, Irvine, CA 92614 Tel: (949) 679-5712 Fax: (949) 420-2134 Email: Support@OptixCom.com Page 1
Germany Office: OptixCom GmbH Magdeburger Strasse 18, 66121 Saarbruecken, Germany Tel: +49 (0)681 4013-5172 SFP+. The SFP-RDK includes: Applications Note(AN-706), User Manuals The SFP-RDK consists of Analog Devices' optical transceiver chip set: the ADN2870 dual loop laser driver, the. Whether you are creating a 100-Gbps or 400-Gbps, small form-factor pluggable (SFP) module, SFP+ transceiver, XFP module, CFP, X2/XENPAK module.



SFP Optical Module Application Circuit Design

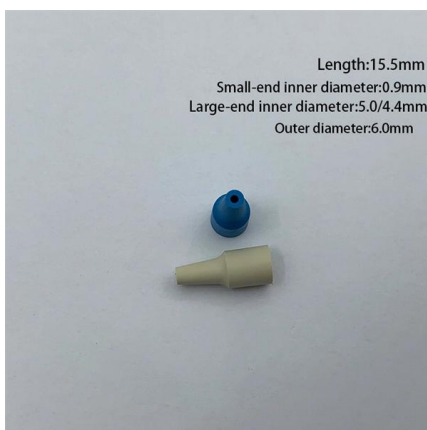


SFP+ Module Reference Design

Related Support Documentation MIC3003 datasheet: Fibre optic module controller featuring digital diagnostic monitoring interface, as per SFF-8472/SFF-8432, with internal/external calibration and full

Optical Module Working Principle , SFP Transceiver Technical Guide

This comprehensive guide breaks down the internal structure, core components (TOSA, ROSA, lasers), and operational mechanisms of SFP optical modules, enriched with technical insights and real-world



SFP+ Module Reference Design

This evaluation board is a complete SFP+ module as defined in the SFP+ MSA document. The design uses Micrel's MIC3003 controller, the 10G DFB/FP laser driver SY88022AL, and any of the following

SFP Reference Design Kit Preliminary Data Sheet (Rev. PrA)

The Analog Devices SFP Reference Design is available in several configuration depending on the end application. The primary differences are related to the speed of the receive section, and the



What Is an SFP Module? -- Complete Guide to SFP, SFP+ & SFP28

An SFP (Small Form-factor Pluggable) is a compact, hot-pluggable transceiver module that allows networking equipment -- including switches, routers, servers, and media converters -- to support

How to Use SFP Connectors in Your PCB Layout

SFP connectors are used to route data into fiber optic transceiver modules, which are normally found in high-speed networking equipment. Today,



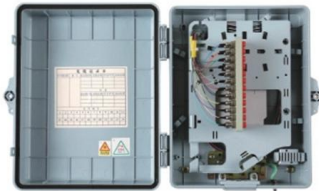
Small Form Factor Pluggable (SFP) Modules: Guide

Discover Small Form Factor Pluggable (SFP) modules, their types, uses in data centers and telecom, key vendors, and future market trends.



Development of SFP+ (the smallest 10Gbit/s plug-pluggable optical)

This paper describes the fundamental structure of SFP+ and the design of Sumitomo Electric's "SPP5101-SR" 850nm SFP+ for 10Gbit/s multimode-fiber application (10GBASE-SR). The

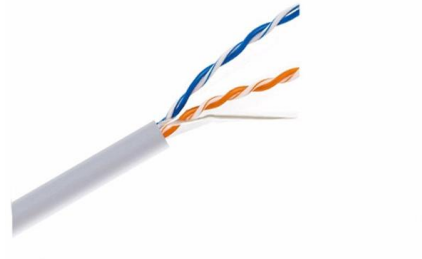


SFP Module Reference Design Guide

This evaluation board is a complete SFP module as defined in the SFP MSA document. The design uses Micrel's MIC3003 controller, the 1.25G DFB/FP laser driver SY84782U, and any of the

What Is an SFP Module and How to Choose It? (2026)

Discover what an SFP module is and how to choose the right one in 2026. Compare SFP, SFP+, and QSFP28. For the ultimate technical guide, see



What is an SFP Module? An Ultimate Guide , SFP

The small form-factor pluggable (SFP) is a compact, hot-pluggable transceiver used in data communication applications. This blog explains its types,



In-Depth Analysis of SFP Modules: History, Workings,

Dive into the world of SFP modules, exploring their history, working principles, various types, applications, compatibility issues, and the correct way to



TI Optical Module 10G SFP+ Total Solution

ABSTRACT TI 10G optical module SFP+ total solution is a complete demonstrated-working optical transceiver solution targeted for the small form factor pluggable (SFP+). This solution reduces

What is SFP Module? An Ultimate Guide (2024)

An SFP module is a small, pluggable optical transceiver that fits into the SFP port of a networking switch or other device. Sometimes, it is known as



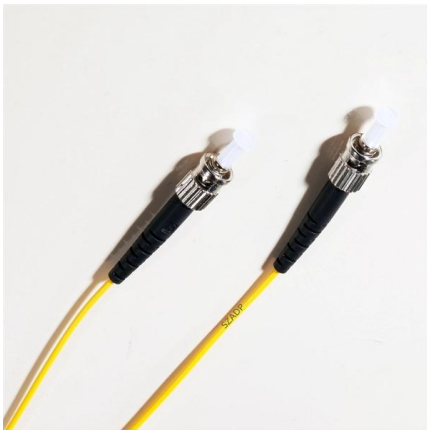
Optical Module PCB: The Ultimate Guide to Design, Fabrication, and

This guide serves as an in-depth resource for engineers, designers, and project managers involved in the development of optical module PCBs. It will explore the complete product lifecycle, from design



SFP Optical Transceivers: Types, Principles, Selection,

In conclusion, SFP optical transceivers are critical components in modern optical communication networks, offering a wide range of types and

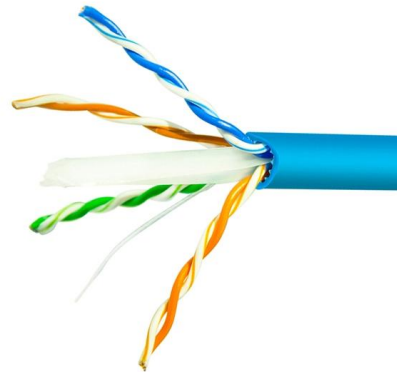


Optical module design resources , TI

View the TI Optical module block diagram, product recommendations, reference designs and start designing.

SFP Modules: The Key to Efficient Fiber Optic Connectivity

Explore the world of SFP modules - the compact, flexible, and high-speed solution for data transmission in fiber optic networks.



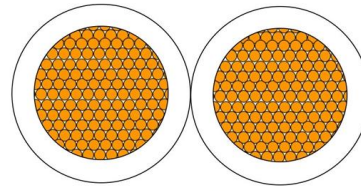
The Ultimate Guide to SFP Modules (2026): Types,

Confused by SFP vs SFP+? Read the definitive 2026 guide on SFP modules. We explain Single Mode vs Multimode, DDM diagnostics, and how to choose the right



ONET SFP+ 10G LR Reference Design With ONET8551T,

Design Overview The Texas Instruments 10.3125-Gbps SFP+ LR Reference Design evaluation board (EVM) was designed to demonstrate the optical performance of the ONET1151L laser driver, the



Optical module design resources , TI

Integrated circuits and reference designs help you create a smaller and faster optical module design used in high-bandwidth data communication applications. Whether you are creating a 100-Gbps or

Roc Yu MCU Central FAE Team

This application note provides the schematics, PC-board layout, Gerber files, bill of materials (BOM), firmware, and a graphical user interface (GUI); not only for the module but also for the evaluation board.



Grid Cable for marine and offshore applications

SFP Chipset and Reference Design Simplify 4.25 GBPS

Complete high performance chips sets support SFP for Sonet, Ethernet and Fiberchannel at rates from 100Mbps to 4.25G and XFP at 10G. Full reference designs speed time to market, simplify evaluation



Optical Transceivers Design Reference Guide

This design guide provides the information needed to incorporate OptixCom's fiber optics transceiver products in the customer's system. The SFP+ series of the transceiver products are compliant with

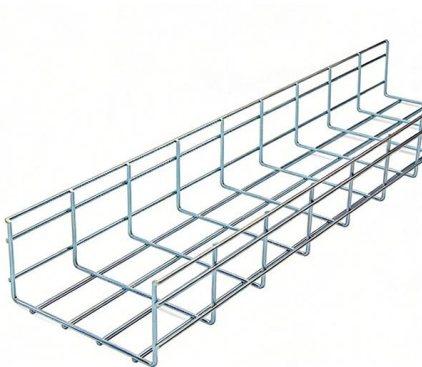


What is SFP Module and How to Choose it?

Ethernet SFP Module: What Is It? Ethernet SFP module, known for its compact, small form-factor pluggable design, also referred to as a mini-GBIC

The road to SFP+: Examining module and system

In contrast, SFP+ modules present relatively new challenges for IC, module, and system designers since standards compliance is determined by the interaction of



Designing a Copper SFP using the VSC8221 10/100

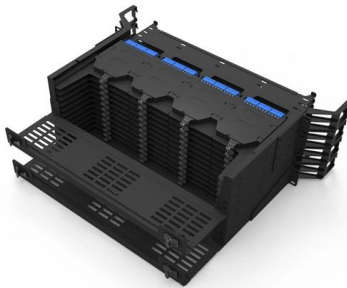
The audience for this document is customers engaged in the design of copper SFPs or field application engineers, marketing and sales involved support and design of VSC8221 based copper SFPs.

Designing a Copper SFP using the VSC8221



10/100

A SFP module can support various kinds of technologies such as Asynchronous Transfer Mode (ATM), FDDI, Fiber Channel, Fast Ethernet and Gigabit Ethernet, and Synchronous Optical Network



SFP Dual LC Optical Transceivers

SFP Dual LC Optical Transceivers This design guide provides the information needed to incorporate OptixCom's fiber optics transceiver products in the customer's system. The SFP series of the

Contact Us

For datasheets, pricing, or custom high-speed optical interconnect solutions, please visit:
<https://www.syropy.com.pl>