

SFP ONT Optical Network Terminal Original Product



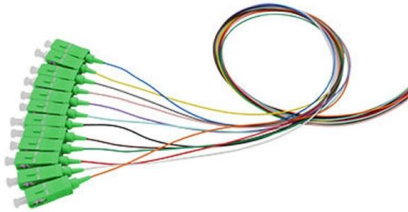


Overview

NTU-SFP-200 is a high-performance subscriber terminal designed for communication with higher-level equipment of passive optical networks and providing broadband access services to the end user. Choose from reliable Optical Network Terminals for seamless connectivity and efficient network solutions. From residential to business to multi-dwelling units, our extensive portfolio of ONTs supports any deployment scenario with industry-leading voice, data and video capabilities. x (1/2/3/4/5) compliant with SFP packaging and integrates a bidirectional optical transceiver function with. PLANET GPN-SFP is an SFP GPON ONU device designed in compliance with the ITU-T G. It is a cost-effective GPON customer premises system that provides broadband services with 1244 Mbps upstream and 2488 Mbps downstream by connecting to subscribers' switches or routers.



SFP ONT Optical Network Terminal Original Product



What is an ONT (Optical Network Terminal)?

What is ONT An ONT, which stands for Optical Network Terminal, is a device that connects the fiber optic infrastructure to your home. This is a must

Defining ONT: Optical Network Terminal

Optical Network Terminal (ONT) explained: Dive into what they are, the parts they're made of, and how they facilitate connectivity.



Nokia ONT Solutions for Modern Fiber Networks: What You

The blog discusses key considerations for selecting Nokia ONT solutions, focusing on compatibility, performance advantages over generic modules, and proper sourcing strategies for authentic Nokia

Openreach Summarises New ONTs for UK FTTP

Network access provider Openreach (BT) has published a new Suppliers Information Note (SIN) for their Fibre-to-the-Premises (FTTP) broadband ISP lines, which

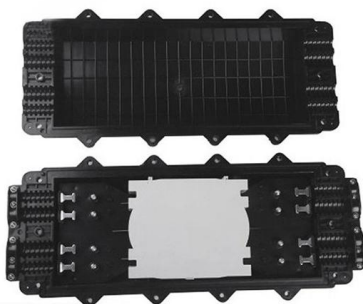
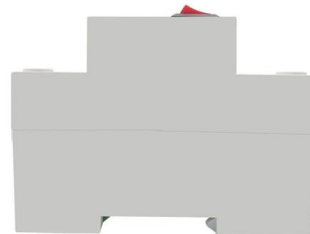


ONT (Optical Network Terminal): A Detailed Guide

ONT or Optical Network Terminal is a device that can get a fiber-optic internet connection in your home or office by communicating directly with ISP (Internet

Optical network terminals

Our SDX 600 Series offers a comprehensive range of GPON optical network terminals (ONTs), from feature-rich, multiport solutions to ultra-compact,



What is Optical Network Terminals (ONT)?

Explore Optical Network Terminals (ONT), their functions, and how they support efficient, high-speed connectivity in modern fiber networks.



ONT/ONU Devices , Optical Network Terminals and

Discover our selection of GPON, EPON, and XG (S)PON ONT/ONU devices. Choose from reliable Optical Network Terminals for seamless connectivity and



Optical Network Terminals Selection Guide: Types,

Optical network terminals (ONTs) are essential endpoint devices in fiber-optic communication systems, responsible for converting optical signals from fiber

ONT Exposed: A Comprehensive Exploration of Optical Network Terminal

Decode ONT impact on modern communication networks, understanding how ONTs facilitate seamless data delivery in optical infrastructures. Delve into the intricacies of ONT technology, ensuring reliable



Optical Network Terminal explained , Pysmian

How does ONT work? The optical signal from the service provider's fibre optic network is received by the ONT and it translates the optical signals into data that



Nokia ONT G-010S-A Quick Reference Guide

The Nokia Optical Network Terminal (ONT) G-010S-A is the answer for home networking delivered by Gigabit Passive Optical Network (GPON) Small Form-Factor Pluggable (SFP).



Subscriber terminal ONT NTU-SFP-200

NTU-SFP-200 is a high-performance subscriber terminal designed for communication with higher-level equipment of passive optical networks and

Amazon : Optical Network Terminal

Optical network terminals provide a seamless bridge between fiber optic and Ethernet networks. Discover plug-and-play convenience and auto-negotiation features.



A Quick Guide to ONT (Optical Network Terminal)

Understand how an Optical Network Terminal (known as an ONT) functions, how it differs from Optical Line Terminal (OLT), and its Role in



SFP with PON MAC and w/o PON MAC

The OLT provides an integrated access box for Passive Optical Networks. OLTs are typically chassis with one or more line cards inside, and on each line card there is



What is ONT? Everything You Need to Know

What is ONT? "ONT" stands for Optical Network Terminal. It is sometimes referred to as an "ONT box," "fiber box," or CPE (Client Premises

What is an Optical Network Terminal (ONT)? Your

This is where the ONT comes in ? What is an Optical Network Terminal (ONT)? An Optical Network Terminal (ONT), also known as a fiber



GPON ONT ONU SFP Class B+ Transceiver

Optcore's OSP2G-GNU is a high performance and cost-effective SFP GPON ONT (also called GPON ONU) transceiver designed for Passive Optical Network



Optical line termination

An optical line termination (OLT), also called an optical line terminal, is a device which serves as the service provider endpoint of a passive optical network.

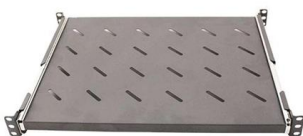


What is an optical network terminal (ONT)?

Share this An optical network terminal is a device that connects a customer's premises to an optical network. Learn all about ONTs, how they work,

Optical Network Terminals

Simplify creation, deployment, and management of end-to-end connectivity services including access, transport, and 5G slices across multi-vendor network elements, network functions, and cloud



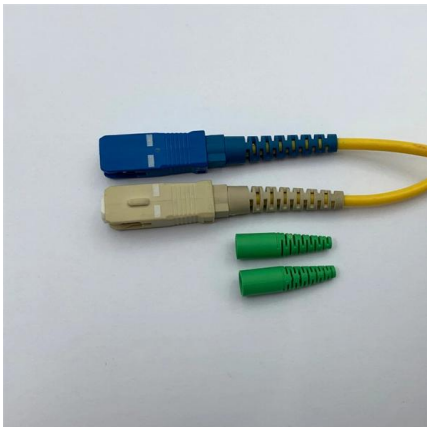
GPN-SFP

The GPN-SFP is a device that integrates the functions of a traditional Optical Network Terminal (ONT) or Optical Network Unit (ONU) into a compact Small



Cisco 10G Routed PON ONT Data Sheet

These 10G optical network terminals for fiber-to-the-premises applications can be managed remotely and are interoperable with the Cisco Routed PON solution. Three models offer a



Nokia ONT G-010S-Q

The Nokia Optical Network Terminal (ONT) G-010S-Q is the answer for home networking delivered by Gigabit Passive Optical Network (GPON) Small Form-Factor Pluggable (SFP).

SFP, Ubiquiti GPON ONT (Optical Network Terminal)

An Optical Network Terminal (ONT), sometimes referred to as an Optical Network Unit (ONU), is a device that is placed at the customer's premises and securely connects the incoming fibre supply to



ONT What is it and how is it used in a fiber network?

What Is an ONT? ONT stands for Optical Network Terminal. It's the device that: Connects directly to a fiber optic line run by your Internet provider Converts that



Contact Us

For datasheets, pricing, or custom high-speed optical interconnect solutions, please visit:

<https://www.syropy.com.pl>