

Rwanda Customs Clearance Micro-Module Armor





Rwanda Customs Clearance Micro-Module Armor



Itegeko ry'ubushyamba rya Gukora Gasutamo mu Rwanda , PDF

This document is the official gazette of Rwanda containing Law No. 21/2006 of 28 April 2006 establishing the customs system. Some key points: - It defines various

Rwanda ARTICLE 7: RELEASE AND CLEARANCE OF GOODS

7.3 Separation of Release from Final Determination of Customs Duties, Taxes, Fees and Charges The Customs implemented the facility of quick release of goods without deposit thus to facilitate traders



RWANDA REVENUE AUTHORITY

The Clearing agent should fill the prescribed application form clearly specifying reasons for request of this special regime. This application should be addressed to the Commissioner for Customs & Excise.

Rwanda

The Customs Services Department under the Rwanda Revenue Authority has the primary function of collecting and accounting for import duties and taxes on imports. All importers must use clearing



RWANDA REVENUE AUTHORITY

Customs Officers must therefore ensure that regulations in force for the control of restrictions and prohibitions of exports of any particular goods are observed. Required Customs Procedure Codes.



CUSTOMS REGULATIONS AND INFORMATION FOR IMPORTS

IAM Note: Customs regulations can change at any time with or without notice. This document is provided as a guide and for information only. While IAM has exercised reasonable care in publishing



Rwanda ARTICLE 7: RELEASE AND CLEARANCE OF GOODS

The Customs post clearance audit is implemented on traders who benefited from Customs facilities like gold card scheme, AEO etc. and the scope of the audit cannot exceed five years.





Rwanda ARTICLE 10: FORMALITIES CONNECTED WITH

10.2 Acceptance of Copies Rwanda Customs and other institutions involved in the international clearance process usually accept electronic copies lodged by traders in the Rwanda electronic

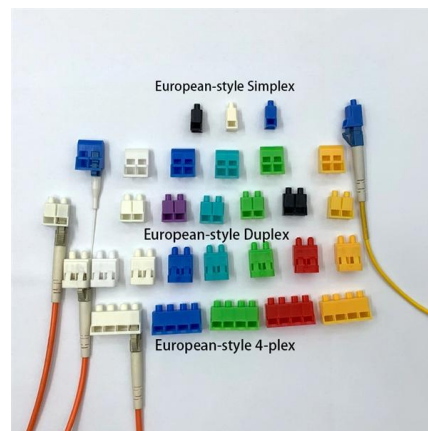


SW

RRA has developed a new mobile friendly web application which can be used to declare goods to Rwanda Customs, while crossing a border. This mobile web application will facilitate speedy

RWANDA REVENUE AUTHORITY

Pre-clearance is handled in accordance with the normal customs clearance procedure. However the declarations are rerouted to the yellow channel for documentary verification even if they are initially



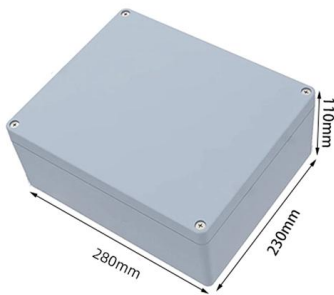
RWANDA REVENUE AUTHORITY

Rwanda Electronic Single Window (ReSW) The Rwanda Electronic Single Window (ReSW), launched in 2012, streamlines international trade by simplifying customs and trade processes. It reduces



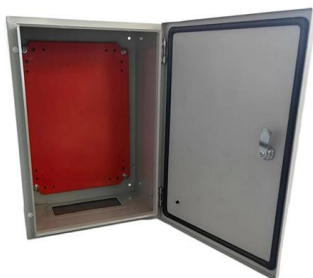
ACE Power Logistics

Clear your goods through customs online, from Kigali Submit your file, track your clearance in real time, and get your release notice -- fast, transparent, stress-free.



Import Customs Guide RWANDA

FIDI Import Customs Guide RWANDA of this publication. It is recommended to verify this information with a FIDI Affiliate prior to shipping. This document is produced based on the information supplied at



Customs clearance procedure for import at Rusumo border

Customs declaration is registered and assessed by a clearing agent appointed by the importer of goods. The clearing agency and/or trader are liable for all information declared on customs declaration.



Rwanda

Procedure Apply In-Person First obtain the Notice of Arrival of goods from the warehouse where the goods are being kept by presenting the custom declaration number to the warehouse



RWANDA REVENUE AUTHORITY

Customs Clearing Agents This section contains all the information about Customs Clearing agents.



Rwanda

Customs clearance procedures, including submission of declarations and documents, are fully conducted online through the Rwanda Electronic Single Window system.



IMPORTATION AND GOODS' CLEARANCE

The purpose of this document is to provide the information related to importation and clearance of goods. This document provides the meaning of importation, required documents to process a



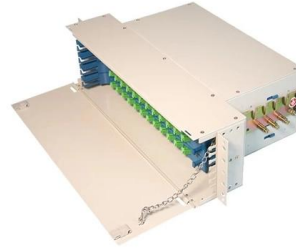
International convention and customs procedures of Rwanda

Learn how to buy and sell goods in Rwanda, including information on the import and export procedures and taxes, customs and international conventions.



RWANDA REVENUE AUTHORITY

A clearing agency is an agency licenced to transact any business related to the goods entrance or exit. Basing on the Customs law, importers are obliged to engage customs clearing agencies for

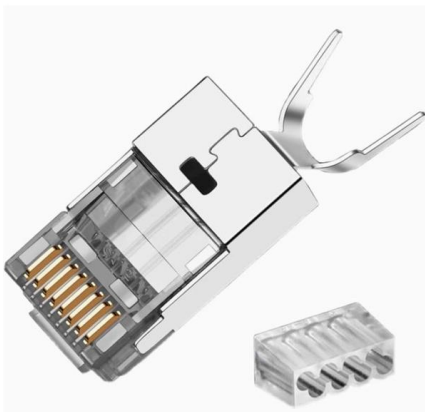


Rwanda

In addition to documentary and physical verification at border posts, importing taxpayers may be subject to Post-Clearance Audits (PCA). PCA is explained in more detials here.

Rwanda

Import documentation to Rwanda may be found in the Rwanda Trade Portal. The Rwanda Trade Portal is regularly updated to reflect the latest regulatory changes and remains the



Understanding Import and Export Regulations in Rwanda

This comprehensive guide sheds light on recent developments, trade facilitation measures, and the importance of compliance for businesses engaged



Contact Us

For datasheets, pricing, or custom high-speed optical interconnect solutions, please visit:

<https://www.syropy.com.pl>