

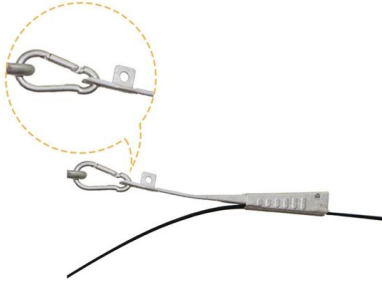
# Route the top-mounted dual-layer separate cable tray for strong and weak current wires





## Route the top-mounted dual-layer separate cable tray for strong an

---



### Installation Of Cable In Cable Trays: NEC, Safety

Cable tray layout must take into consideration the design limits of the cable. To minimize damage and verify integrity after installation, follow the practices

### Cable Tray Spacing Standards for Installation and Safety

The Importance of Cable Tray Spacing in Electrical Infrastructure Cable tray spacing is a critical aspect of electrical infrastructure, influencing both



### Important design considerations for cable ladder and

Consequently, only cables where mechanical protection is provided by a suitable sheath, for example, PVC sheathing or steel wire armouring, can be

### Anixter - Wire and Cable, Networking, Security and Utility Power

Anixter - Wire and Cable, Networking, Security and Utility Power Solutions



### Supplier of power cables, cable tray & cable raceway in

PowerTel & his associated factories can provide you a wide of range of low, medium. high voltage power cable, and its cable tray & raceway, including



### A Guide to Installing and Supporting Electrical Cable Trays

This guide covers the critical steps, from selecting the right electrical cable tray and performing accurate cable fill calculations to managing a safe cable pull through



### Guide to cable support systems

Widths of 8 and 15 millimetres enable flexible adjustment to different cable trays, cable ladders and cable volumes. With the help of the matching SBV tightening strap locks and 576 spring chuck, the





## Complete cable tray manual for electrical engineers and

The fact that a cable can easily enter and exit cable tray anywhere along its route, allows for some unique opportunities that provide highly flexible designs. Fewer

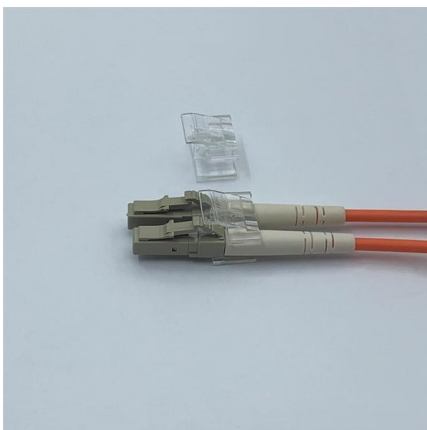
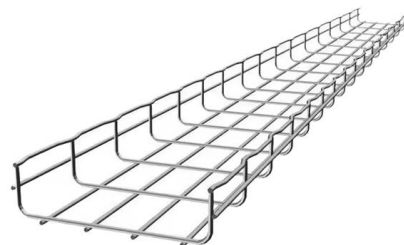


### Mastering Cable Tray Installation , Step-by-Step Guide for a Seamless

A seamless setup ensures the safe routing and support of cables, preventing potential hazards and minimising maintenance requirements. In this blog post, we will take you through a step

### Cable Tray Installation

Learn everything about cable tray installation with our complete guide. Discover types, steps, and safety tips for efficient electrical cable management.



### Cable tray installation requirements-ZM Technology Co., Ltd.

As a supporting project of the wiring project, the cable tray has no special normative guidance, and the specifications and forms of various manufacturers lack universality.



## **A Guide to Installing and Supporting Electrical Cable Trays**

A professional guide to installing electrical cable tray systems per NEC Article 392. Covers support, securing cables, and fill calculations.



## **Core Principles for Electrical and Instrumentation Cable**

An effective layout ensures safety, minimizes interference, reduces maintenance time, and keeps the overall system organized. Below are the key principles to

## **Best Practice Guide to Cable Ladder and Cable Tray Systems**

This publication is intended as a practical guide for the proper and safe\* installation of cable ladder systems, cable tray systems, channel support systems and associated supports.



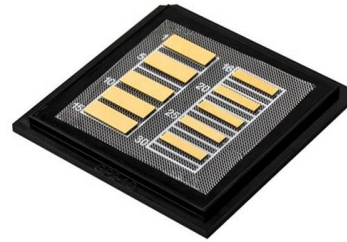
## **GUIDE CABLE TRAYS TECHNICAL**

When fitting cable trays and their accessories, the products are cut on site to create changes of direction, adjust sections, etc. Damage can also occur during handling; as a result, both the



## Beama Best Practice Guide , Installation Of The System , Cable

The following recommendations are intended to be a practical guide to ensure the safe and proper installation of cable ladder and cable tray systems and channel support and other support systems.



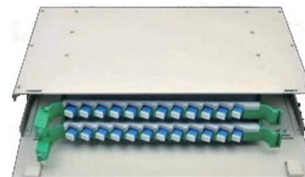
### Cable Tray Technical Guide A practical guide to product selection and

The choice of method should be discussed with a local inspector. The best decision may be to extend only the cables, creating a discontinuity in the cable tray.



### Cable Tray Design, Layout, and Overall Wiring Planning

Learn about effective Cable Tray Design and Layout for electrical systems. Our guide covers planning, material choice, safety, and maintenance.



### B-Line series Cable Tray Design Considerations

As an industry leader in cable tray, Eaton offers one of the widest ranges of cable management solutions available in the market today with its B-Line series portfolio. With unmatched quality and service, we



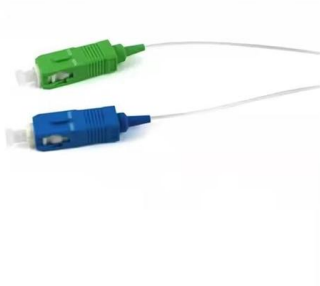
### **Weak current construction , Construction points and installation**

The cable tray construction sequence is as follows: measurement positioning -> support hanger installation -> bridge installation -> grounding treatment Cable tray selection design: Strong and



### **Cable Tray Technical Guide A practical guide to product selection and**

A practical guide to product selection and installation This guide for engineers and installers has been developed by ABB as a practical reference regarding cable tray characteristics, installation, and



### **Guide to cable support systems**

Universal systems for cable support structures are used for small loads. The systems are suspended from the ceiling with threaded rods, stand-off brackets allow raised floor mounting of cable trays,



### **Cable Tray Layout & Section (Electrical) , PMG Engineering**

Explore the essentials of cable tray layout and section design in electrical systems, ensuring optimal cable management and support.



## Cable Pathways: A Data Center Design Guide and Best

Cables may not be the most glamorous part of the data center, but they certainly are important. Scott VanDenBerg of Optical Cable Corporation

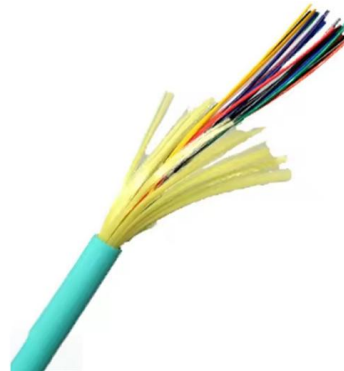


### RECOMMENDED SPECIFICATIONS OF JUNCTION BOX AND CABLE TRAY

Basic requirements for some aspects of the E&I components (e.g., cable tray and junction box) can be found in the ABS Rules for Building and Classing Mobile Offshore Drilling Units (MODU Rules), as

### Cable tray restrictions where power and data share a common tray

I have surveyed a site where power wiring and data wiring share the same 18inch cable tray mounted above the racks in an article 645 space (with no raised floor?). The power wiring is type



## Contact Us

---

For datasheets, pricing, or custom high-speed optical interconnect solutions, please visit:  
<https://www.syropy.com.pl>