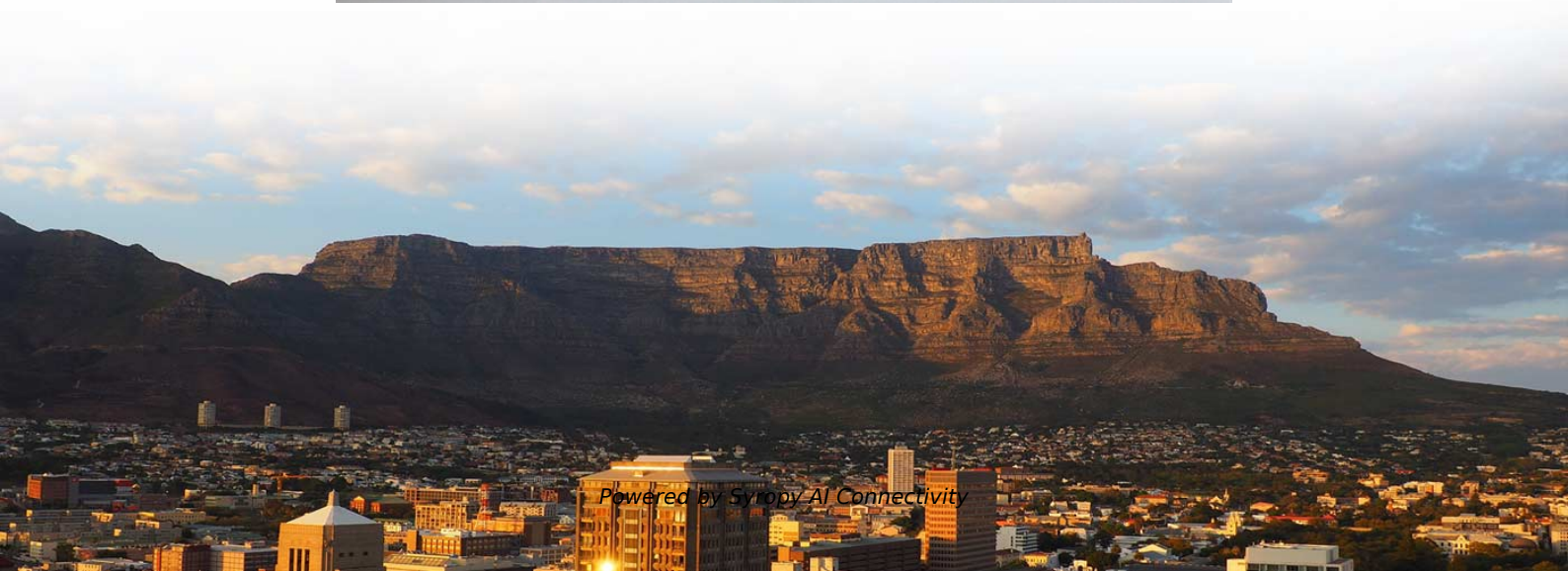


RoHS-compliant Erbium-Doped Fiber Amplifier SFP





RoHS-compliant Erbium-Doped Fiber Amplifier SFP



EDFA (Erbium Doped Fiber Amplifier) - Physics and

EDFA (Erbium-Doped Fiber Amplifier) is an optical device used to compensate optical signal attenuation caused by fibers and components, to increase optical

Understanding Erbium-Doped Fiber Amplifiers (EDFA)

In the realm of fiber optic communications, Erbium-Doped Fiber Amplifiers (EDFAs) play a pivotal role in enhancing signal strength over long



Erbium-Doped Fiber Amplifiers: Ultimate Guide

Discover the principles, applications, and benefits of Erbium-Doped Fiber Amplifiers in modern optics and telecommunications.

Erbium doped fiber amplifier

Two critical parameters in the numerical solution of coupled rate and propagating equations are the absorption and emission cross sections. The Er cross section



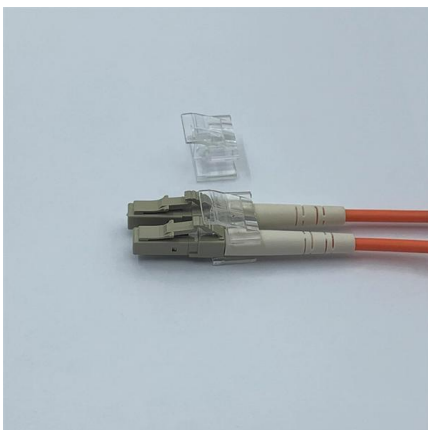
Erbium-Doped Fiber Amplifiers (EDFA)

Thorlabs' core-pumped erbium-doped fiber amplifiers (EDFAs) provide high small signal gains and output powers in a compact, turnkey benchtop package or a plug-in PXIe module with FC/APC (2.0)



EDFA

These units are designed for any optical Ethernet transmission applications and has been developed to integrate with optical telecommunication equipment manufactured by any vendor. The products



Erbium Doped Fiber Amplifiers

Erbium Doped Fiber AmplifierŌs (EDFAŌs) have revolutionized the optical communications world by expanding the applications for which optical fiber is a solution.



EDFA Erbium Ytterbium Doped Fiber Amplifier CATV OAB-C-EY R4

Erbium Ytterbium Doped Fiber Amplifiers provide the perfect opportunity to build flexible CATV network systems. These amplifiers are available in both single channel and DWDM configurations. OAB-C



A photonic integrated circuit-based erbium-doped amplifier

Abstract Erbium-doped fiber amplifiers revolutionized long-haul optical communications and laser technology. Erbium ions could provide a basis for



Erbium Doped Fibers , Rare Earth Doped Optical Fibers

F-EDF erbium doped fibers provide the basic building block to fiber optic amplifiers used in broadband optical networks in the 1550 nm transmission window. These erbium doped fibers deliver gain



Erbium-doped fiber: Amplifiers: What everyone needs to know

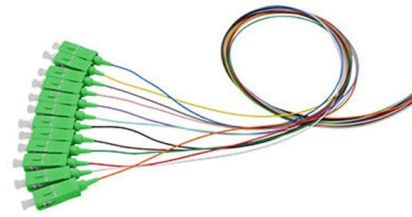
This paper discusses erbium-doped fiber amplifiers and its applications. EDFA gain performance and fiber optimization, EDFA saturation and output power, amplified spontaneous





Erbium-Doped Fiber

An erbium-doped fiber amplifier is one of the most popular optical devices in modern optical communication systems as well as in fiber-optic instrumentation. EDFAs provide many advantages



PXI Erbium-Doped Fiber Amplifier

Optimize your C-band optical signal with our high-power Erbium-Doped Fiber Amplifier (EDFA). Constant power, current, and gain control modes for versatility.

15 Must-Know Questions for Erbium-Doped Fiber

EDFA stands for Erbium-doped fiber amplifier, a vital element in optical communication systems. In this article, we'll delve into 15 key questions



EDFA , Erbium-doped fiber amplifiers , NIR-SWIR

Shop our collection of EDFA erbium-doped fiber amplifiers: 1030-2054nm, -14 to +15dBm input, up to 40 W output. SLM narrow linewidth options. Browse at RPMC

Erbium-Doped Fiber Amplifiers



High-power applications often involve ytterbium-sensitized fibers or double-clad fibers for enhanced pump absorption efficiency. Conclusion Erbium-doped fiber amplifiers remain a dominant technology

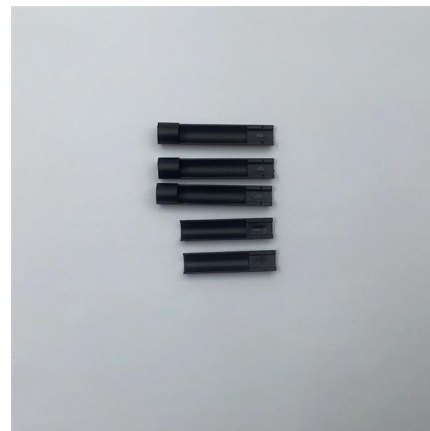


Optical amplifiers and lasers using erbium-doped optical fibers

We report properties on Erbium-Doped Fiber for amplifier and fiber laser applications. Key factors such as pump source, power, and fiber length were analyzed to optimize system

1550nm Erbium Doped Fiber Amplifier

With well-qualified optical and electronic circuits design, AN-EDFA-1550 keeps the excellent optical and electrical performance by using high quality devices. All materials applied in AN-EDFA-1550 EDFA



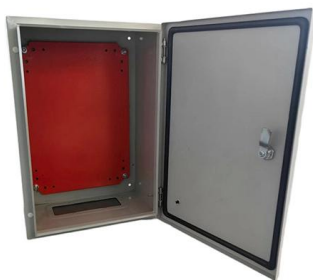
A photonic integrated circuit-based erbium-doped amplifier

We demonstrate a photonic integrated circuit-based erbium amplifier reaching 145 milliwatts of output power and more than 30 decibels of small-signal



Erbium doped fiber amplifier

For example, the erbium-doped fiber devices have been extraordinarily successful due to their low noise, high and broad optical gain, and would continue to

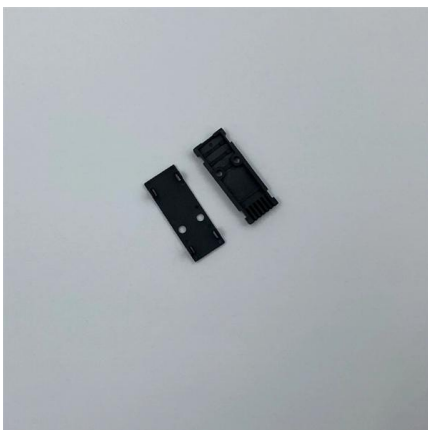


Erbium-Doped Fiber Amplifiers (EDFAs): Foundations

EDFAs support multi-channel amplification over long distances, making them a foundational technology in global fiber-optic communication

Erbium Doped Fibers , Rare Earth Doped Optical Fibers

Erbium Doped Fibers provide the basic building blocks for fiber optic amplifiers more specifically Erbium Doped Fiber Amplifiers (EDFAs) used in broadband optical networks and CATV applications. The



What is an Erbium-Doped Fiber Amplifier(EDFA) in

An Erbium-Doped Fiber Amplifier boosts optical signals in fiber networks, enabling long-distance communication with minimal loss and high



Review of Erbium-doped fiber amplifier

In particular, the Erbium-doped fiber amplifier (EDFA) is one example of an optical fiber amplifier that is widely known for use in amplifying optical signals.



Erbium Ytterbium Doped Fiber Amplifier, Up to 37 dBm, Rackmount

The Optilab EYDFA-XX-R Erbium Ytterbium Doped Fiber Amplifier (EYDFA) is a high-power, versatile amplifier designed for MOPA, optical communication and other general-purpose optical applications.



Rare-earth-doped Fibers - erbium, ytterbium, thulium,

Rare-earth-doped fibers are optical glass fibers which are doped with rare earth ions. Such dopants are usually used for laser amplification.

Waterproof and dustproof, reliable and safe

The outer classic sink design allows the sealing ring of the cabinet and door to be seamlessly compressed without leaving a trace of gaps



Compact and flat-gain fiber optical amplifier with Hafnia-Bismuth

For the first time, we demonstrated a compact Erbium-doped fiber amplifier (EDFA) using a newly developed Hafnia Bismuth Erbium co-doped fiber (HBEDF) as a gain medium. The HBEDF





Erbium-doped Fiber Amplifiers

Erbium-doped fiber amplifiers use erbium-doped fibers. They typically operate in the 1.5-um spectral region and are most frequently used for telecom systems.



Erbium-doped Fiber Amplifiers (EDFA)

BaySpec supplies IntelliGain® series metro erbium-doped fiber amplifiers (EDFAs) designed for OEM integration into applications that require a high gain and a low

Contact Us

For datasheets, pricing, or custom high-speed optical interconnect solutions, please visit:
<https://www.syropy.com.pl>