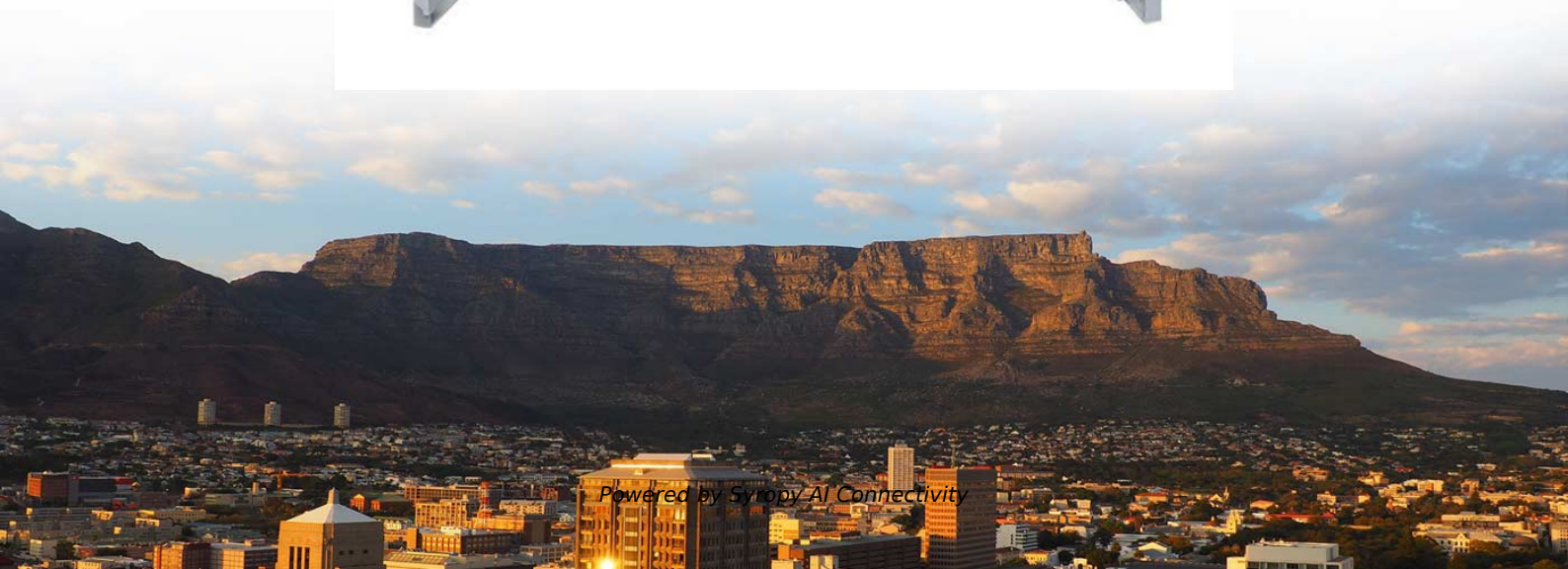


Requirements for installing electrical distribution boxes by slotting in the wall





Overview

Choose the right box based on environment (indoor/outdoor), load capacity, and durability. Ensure safe placement: install in dry, accessible areas with good ventilation and at appropriate height (typically ~1. In this guide, we'll break down everything you need to know to install a distribution box correctly and confidently. The installation requirements and specifications of Distribution box involve many aspects, including site selection, fixing method, wiring specifications and safety protection. For residential buildings, the standards DIN VDE 0100-410 (protection against electric shock), DIN VDE 0100-420 (protection against thermal effects) and DIN VDE. Just like travelers need clear pathways and safety protocols, your electrical circuits need proper management to prevent chaos.



Requirements for installing electrical distribution boxes by slotting

Installing Electrical Boxes and Receptacles

Electrical-box lineup. The plastic electrical boxes on the left mount either with built-in nail holders or a bracket that attaches to a stud. The plastic box with the face-mount bracket is automatically set at



Distribution box

A distribution box, also known as a fuse box or power distribution box, is the heart of the domestic electrical installation. It is used to distribute the electricity supplied by the energy supplier to the

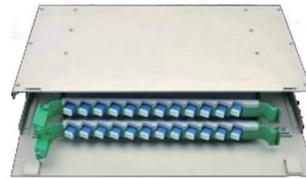


Requirements And Specifications For Installation Of

The installation requirements and specifications of Distribution box involve many aspects, including site selection, fixing method, wiring specifications

Summary of key points for construction and installation of distribution

The construction and installation points of distribution boxes and switch boxes are summarized as follows: 1. Select qualified products that meet national standards and safety requirements.



Safety requirements of distribution box

The distribution box has the characteristics of small size, simple installation, special technical performance, fixed location, unique configuration function, not limited by

Installation process of distribution box

3. The distribution box shall be embedded in the installation, and the panel after installation shall be flat with the wall. 4. After the cabinet (panel) adjustment is



Integrating the housing of an electrical flush-mounted box

Integrating the housing of an electrical flush-mounted box The integration of an electrical flush-mounted box is an essential step for any modern electrical installation, allowing cables to be secured and



Power Distribution Boxes Explained Simply

Discover the essentials of a Power Distribution Box--how it works, key types, benefits, and tips to ensure safe, efficient electrical power management.



Cautions and Requirements for Installation of

Distribution box is a low-voltage distribution device which assembles switchgear, measuring instruments, protective appliances and auxiliary equipment in a closed

Distribution Box Installation: A Complete Guide to Safe

In this comprehensive guide, we'll cover everything you need to know about distribution box installation, from the basics to the step-by-step installation



Electric Panel Installation Method Statement

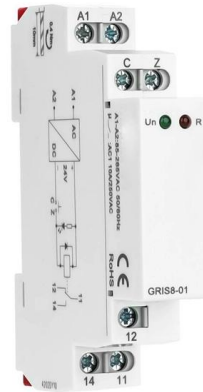
This document provides a method statement for installing and terminating electric panels and distribution boxes. It outlines 4 steps: 1) Pre-installation preparation





Design requirements and standards for low voltage

You must make safety your top priority when working with low voltage distribution boxes. Design requirements help you follow important standards like



Installing Electrical Box in a Completed Wall

This post goes over the equipment and materials you need, as well as a step-by-step description of how to install an electrical box in a completed wall. By following

The Complete Guide to Distribution Box: Installation, Types & More

Proper installation of a distribution box requires careful planning and adherence to electrical codes. While major installations should always involve qualified electricians, understanding



- IP65/IP55 OUTDOOR CABINET
- IP54/55
- OUTDOOR ENERGY STORAGE CABINET
- OUTDOOR MODULE CABINET

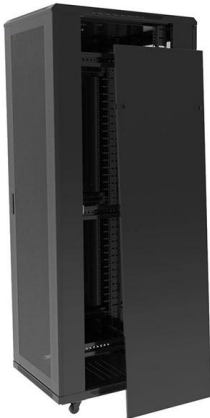
How to Install a Distribution Box--A Comprehensive

Before starting the installation, finding a proper place for putting the distribution box is crucial, because it largely decides the safety and convenience



Understanding Distribution Boxes: A Comprehensive Guide

support safer operation in electrical systems For this reason, distribution boxes are widely used in homes, commercial buildings, industrial

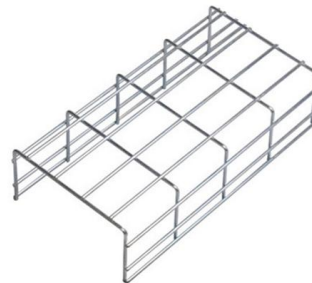


Understanding Distribution Boxes: Your Guide to Power

What are Distribution Boxes and Their Importance? What are Distribution Boxes and Their Importance? Distribution boxes, or electrical junction

Tips for Electrical Box Installation

Installing the electrical wall boxes is necessary for switches and receptacle outlets. Follow these tips for electrical box



Length:33.5mm
Small-end inner diameter:6.0mm
Large-end inner diameter:6.9mm



Installing an Electrical Box In Your Home , Woodsmith

Cutting an Opening for the Box Once you've identified your wall stud, use a saw to carefully cut out an opening large enough for your electrical box.



Size determination, installation method and wiring mode

The distribution box is the central hub of the home circuit and the general control of our daily power consumption. It is an indispensable electrical equipment. If there



Latest Requirements for Distribution Box Installation under the US

The latest NEC updates prioritize adaptive solutions for modern energy demands. With homes now packing solar arrays, EV chargers, and smart-home systems, distribution boxes work

Distribution Box Installation: A Complete Guide to Safe

The distribution box, often referred to as a breaker box, fuse box, or electrical panel, is a critical component of any electrical system. It acts as the central hub for



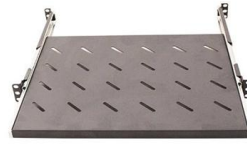
A Step-by-Step Guide to Wiring an Electrical Panel Box

Find out how to properly wire an electrical panel box with a comprehensive diagram and step-by-step instructions.



How to Install a Cable Distribution Box Safely and

This article provides a detailed overview of the entire process of installing a distribution box, from pre-installation preparation to post-installation



Webit Cabling

Contact Us

For datasheets, pricing, or custom high-speed optical interconnect solutions, please visit:

<https://www.syropy.com.pl>