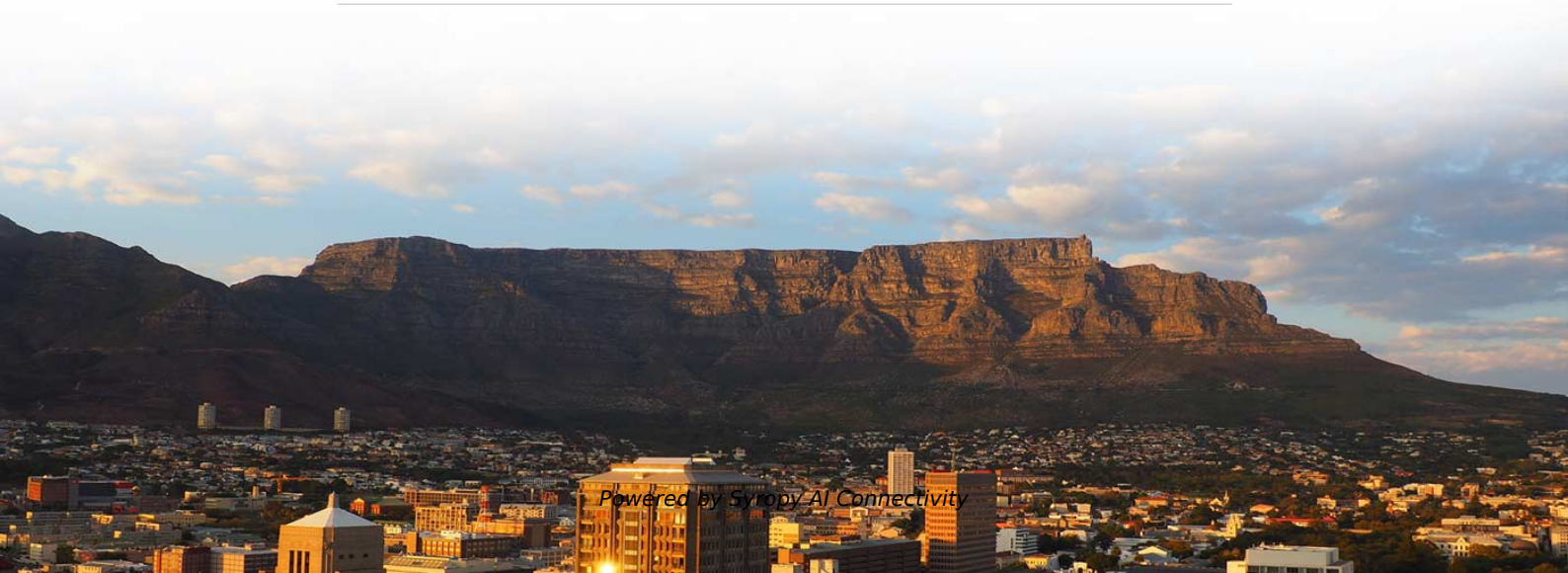


Requirements for Temporary Electrical Distribution Boxes



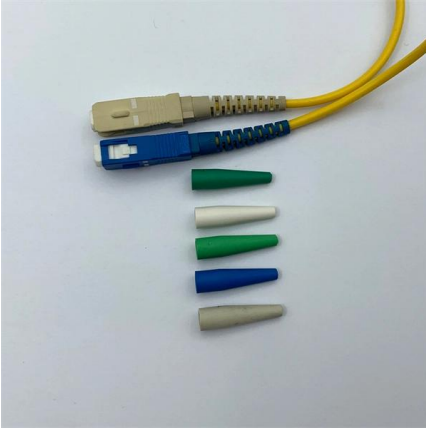


Overview

Construction site temporary installations must use 110V CTE for portable tools, IP-rated distribution boards, 30 mA RCD protection on every circuit, and quarterly EICR inspections. However, exposure to weather, frequent relocation, rough use and other conditions not normally encountered with conventional wiring systems necessitate special consideration not required in other applications or in completed structures. This guide covers BS 7375, BS 7671 Section 704, and everything electricians need to know about site electrics. Why Temporary Power Systems Are Critical on Job Sites Construction sites are constantly changing environments.



Requirements for Temporary Electrical Distribution Boxes

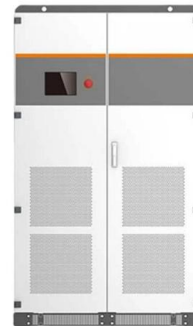


Temporary Power Construction Site Guide: Industrial Plug Sockets,

Discover how to supply temporary power safely on construction sites using E-abel distribution boxes, industrial plug sockets, and IP67 connectors for reliable outdoor electricity.

Electrical Power Distribution Boxes for Temporary Event

Small events may require a single single-phase distribution box, while larger events will likely need multiple 3-phase distro boxes for high-demand



Temporary Jobsite Power Setup: NEC & OSHA Compliance Guide

Ensure NEC & OSHA compliance with your temporary jobsite power setup using a reliable industrial portable power station.



Expert Guide: Selecting Temporary Power Distribution Boxes

Different temporary power distribution boxes were selected for workshops, warehouses, and tank farms based on their specific hazardous area ratings and protective features. A one-size-fits



Temporary Power Safety

Follow these steps to ensure proper safety procedures are met when working with or around temporary power. GFCI protection is required for all 125-volt, 15-, 20-, and

TEMPORARY POWER

Events Temporary electrical supplies are required for many different types of events. For example, television and film sets, theatre productions and concerts, both indoor and outdoor, have power



Temporary Electrical Supply HSE Procedure For

Below procedure will help you to establish a safe standard for the installation of temporary and permanent electrical fixtures/appliances on project sites.



Does BS 7671 apply to temporary power distribution?

It regularly gets updated as our technologies and understanding of electrical safety progresses, but ultimately it is a standard to which electrical installations must adhere. Temporary installations and



How To Get Temporary Power for Your Construction

Temporary Power Box A temporary power box, also known as a power spider box, is a portable electrical enclosure that provides temporary electrical



Temporary Installations, based on the 2020 NEC

The support requirement for temporary cables is determined by the authority having jurisdiction based on the jobsite conditions. You can't use vegetation to support



Does BS 7671 apply to temporary power distribution?

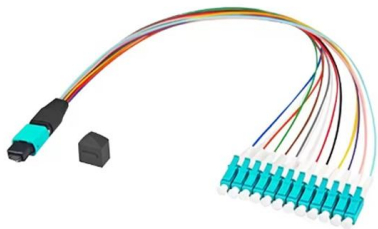
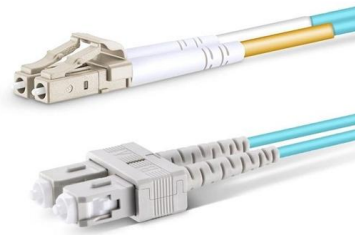
BS 7375: The Standard for Construction Site Electrical Distribution BS 7375 (Code of Practice for Distribution of Electricity on Construction and Building Sites) is the primary guidance





Requirements And Specifications For Installation Of

In flammable and explosive environments, explosion-proof distribution boxes should be selected and explosion-proof treatment should be carried out.

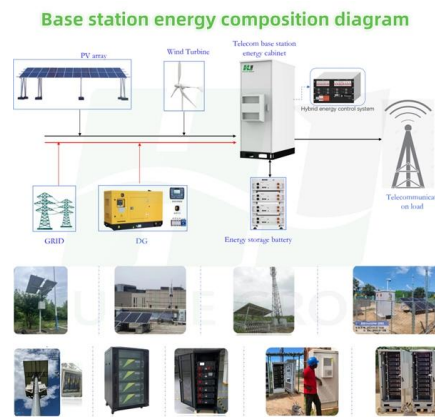


Understanding NFPA 70, Article 590: Temporary Electrical Installations

Electrical Accidents Know No Boundaries: The article underscores that electrical accidents can occur in any installation, temporary or permanent if NEC requirements are not

A Guide to Temporary Power Distribution Boxes , ATI

Temporary power distribution boxes are a popular method of providing electrical power to remote areas. Learn about the benefits of using



Temporary electrical wiring for construction sites

All 120-volt, single-phase, 15- and 20-ampere receptacles shall be of the grounding type and their contacts shall be grounded by connection to the equipment grounding conductor of the circuit



The Ultimate Guide to Temporary Power Distribution Boxes

Learn all about temporary power distribution boxes, their applications, advantages, and how to choose the right one for your needs.

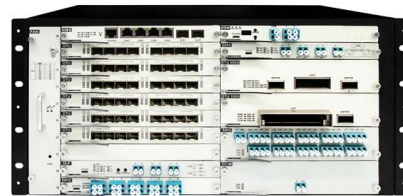


Essential Guidelines for Safe Temporary Electrical

This article aims to provide a comprehensive overview of the essential guidelines for safe temporary electrical installations on construction sites, focusing on Best

Temporary Power Safety Solutions

Temporary Power Safety Solutions Temporary Power Distribution While the requirements for safely distributing power at construction sites, street fairs,



5 Benefits of Using a Temporary Distribution Box

For this reason, such applications rely on temporary power distribution boxes for getting electricity to equipment. So read this helpful list



Five mistakes when installing temporary distribution boxes and how to

Temporary distribution boxes are indispensable at construction sites, events and temporary workplaces. Yet things often go wrong when installing or renting these installations,



How to Get Temporary Power for Your Construction Site

Temporary power is a short-term or nonpermanent power structure. It's a safe and reliable electricity supply for tools, lights and facilities for the duration of a

Expert Guide: Selecting Temporary Power Distribution Boxes

Industrial sites demand electrical systems that perform under pressure. Temporary power distribution boxes handle that role, routing electricity where it needs to go while keeping



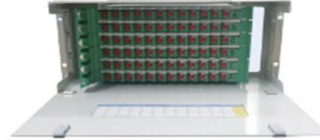
Temporary Power Safety Solutions

While the requirements for safely distributing power at construction sites, street fairs, carnivals, convention centers, and the like attempt to mimic those for permanent



1926.405

Electrical continuity of metal raceways and enclosures. Metal raceways, cable armor, and other metal enclosures for conductors shall be metalically joined together into a continuous electric conductor

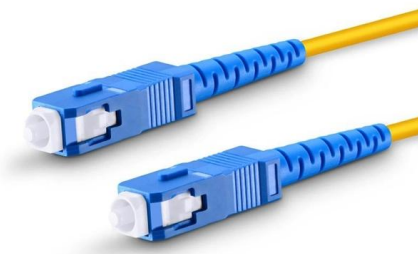


Safety requirements of distribution box

The distribution box has the characteristics of small size, simple installation, special technical performance, fixed location, unique configuration function, not limited by

The installation requirements for the distribution box

A distribution box is the heart of any electrical system. It takes the incoming power and safely distributes it to different circuits throughout your



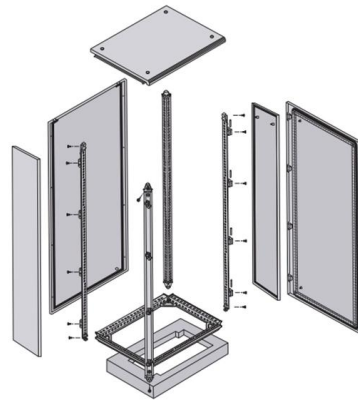
Temporary Installations, based on the 2020 NEC

The requirements of Article 590 apply to temporary power and lighting installations and removals, including power for construction, remodeling, maintenance, repair,



Distribution Boxes Rental in Dubai, UAE

Rent certified distribution boxes in Dubai for events, construction, and temporary power needs. Fast delivery, safe setup, and 24/7 support. Get a quote now!



Safety Guidelines for Temporary Power Distribution

Learn about the essential safety guidelines for temporary power distribution to protect employees from electrical hazards.

Contact Us

For datasheets, pricing, or custom high-speed optical interconnect solutions, please visit:
<https://www.syropy.com.pl>