



Requirements for Network Patch Panel Termination

190X95X25mm





Overview

Step 1: Tools Required The first and foremost step is to ensure that you have all the required tools. These tools include: - Cat6 cable - Cat6 patch panel - Cable stripper - Cable crimping tool - Cable tester. A company I work for recently paid "a professional" to wire an office with Cat6 cable including terminating the RJ45 jacks in a patch panel. Instead of using generic principles, you can follow these concrete selection ideas based on your actual deployment needs: Media Types & Category Requirements: For environments that need to combine copper, fiber, and other services, or plan to upgrade to higher categories, blank keystone patch. According to the Telecommunications Industry Association (TIA) TIA-568 standards, untwisting the copper conductors more than 0. Design, manufacture, test, and install the project's data cabling systems in accordance to the UNM IT design guidelines and standards, industry standards, manufacturer's requirements and in accordance with NFPA 70 (National Electric Code), state codes, local codes, requirements of authorities.



Requirements for Network Patch Panel Termination

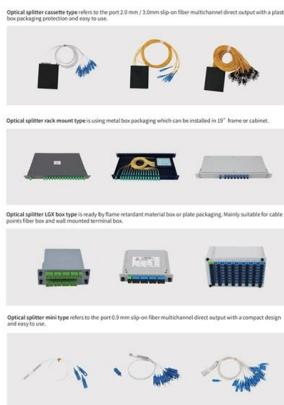


Lab 7A : Termination on Modular Patch Panel

Learn how to properly terminate cables on a modular patch panel for reliable network connections. This lab covers step-by-step techniques for efficient cable management and secure terminations

Transceivers and Termination Points -- MCSI Library

Transceivers and Termination Points Network transceivers and termination points are fundamental elements in the world of networking and telecommunications. Transceivers, such as SFP and QSFP



Specification Standard

Install termination blocks and patch panels as specified by the requirements of this section and in particular the related sections; 27 15 13 Copper Horizontal Cabling; 27 15 43 Face plates and

Structured Cabling Termination Techniques

This technical guide moves beyond the basics to detail the methods, tools, and standards required for terminating copper and fiber optic cables



Patch Panel Terminations: The Backbone of Structured

Patch panel terminations are a critical aspect of network infrastructure that often goes unnoticed until problems arise. Proper termination techniques,



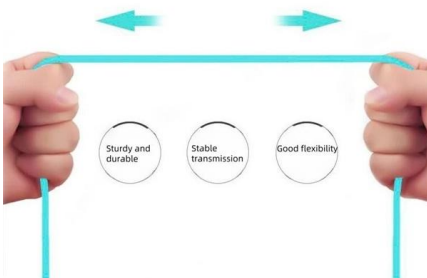
How To Terminate Fiber Optic Patch Panel -Teleweaver

What is a fiber optic patch panel? Fiber optic patch panel is also called fiber distribution panel. Its main function is to terminate the fiber optic cable and



More durable and robust

The outer layer is made of environmentally friendly PVC, which is soft and elastic. It can be stretched without damage, so you can use it with confidence.



How To Terminate A Patch Panel

To terminate a patch panel, you will need the following materials and tools: Materials: - Patch panel - Keystone jacks - Patch cables - Cable ties Tools: - Cable tester - Wire cutter/stripper -



How To Terminate Cat6 Patch Panel

In conclusion, the above steps are a general guideline on how to terminate Cat6 patch panel. Learning how to terminate the patch panel is essential for setting up an efficient and strong network



Ethernet Patch Panel: Complete Guide to Structured

Modern tool-less keystone panels simplify installation, while traditional punch-down panels require proper tools for reliable termination.

Requirements for correct termination of Cat6 in patch panel

A company I work for recently paid "a professional" to wire an office with Cat6



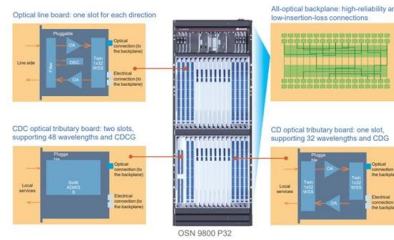
271119-2021-Terminations

The eight-position module shall exceed the connector requirements of the TIA/EIA Category 6A standard. The module termination to four-pair, 100-ohm solid unshielded twisted pair cable shall be

Patch Panel Terminations: The Backbone of Structured



Patch panel terminations are a crucial component in structured cabling systems, serving as the central point where network cables are organized and



SPECIFICATION STANDARD Terminations Blocks and Patch Panels

3.02 PATCH PANEL INSTALLATION he patch panel installation shall meet the manufacturer's requirements and specifications to provide a 20-yea Each TR shall contain patch panels as required

Optical Distribution Frame (ODF): The Complete Guide for Fiber Network

In modern data centers and enterprise networks, Optical Distribution Frames (ODF) serve as the backbone for organizing, terminating, and managing fiber optic connections. This article



Cable Plant Basics: Master Network Management

Learn essential strategies for organizing and managing network patch panels to improve reliability, simplify troubleshooting, and support scalable



Build a Reliable Ethernet Patch Panel System , Server

Step-by-step guide to building a reliable Ethernet patch panel system in server rooms. Follow TIA standards, avoid common mistakes, and ensure 10G

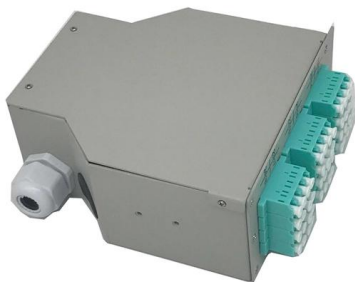


What is a Patch Panel, and What is It Used For?

Patch Panels are passive networking devices that help organize and manage network cables by providing a central place for cable termination and

What Is A Patch Panel? How It Works, Key Benefits

Learn how a patch panel can help multi-location enterprises organize network cabling across every site for streamlined management in this blog by



10.6. Patch Panels, Patch Cables and Racks

Cable termination, patch panels, patch cables and racks are designed to prevent emanations, cross-connecting or cross-patching systems of differing classifications as well as following good



Section 27 11 19

Specify angled panel covers at the top and bottom of each stack of angled patch panels. Covers shall mount to the same RU rail positions as the top and bottom patch panels.



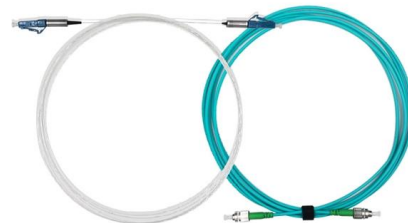
How To Terminate Network Cable On Patch Panel

Conclusion Terminating a network cable on a patch panel is a vital skill for any network installer or technician. With our step-by-step guide, you should



Specification Standard

All telecommunications cables, termination blocks and patch panels shall be installed and terminated by manufacturer certified technicians experienced in the installation and termination of



How To Terminate Cat6 Patch Panel

This process requires a proper understanding of the cable termination process, and the tools required for the process. Here is a step-by-step guide to help you terminate Cat6 patch panel.



Requirements for correct termination of Cat6 in patch panel

A company I work for recently paid "a professional" to wire an office with Cat6 cable including terminating the RJ45 jacks in a patch panel. When I looked at the patch



How to Terminate Fiber Patch Panel

Fiber patch panel is a crucial component in fiber optic networks that allows for efficient management and organization of fiber optic cables. In this blog

Patch Panel Installation: 11 Steps to Installing a Network

A patch panel is a device that the Ethernet wires terminate into for a computer network. Learn more about the steps to installing yours!



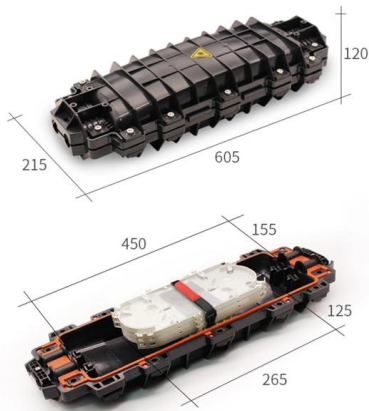
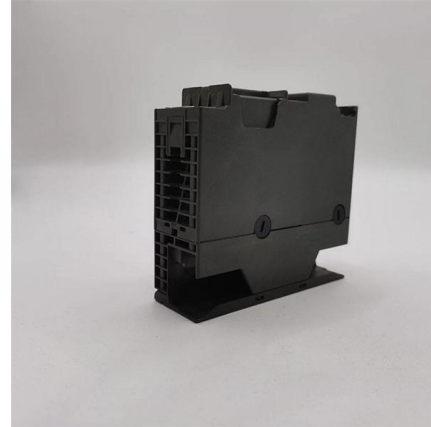
How to Terminate on a Patch Panel

This video provides a step by step approach on how to terminate twisted pair cables onto a loaded patch panel. It details the tools required, including a cab



Types of FS Ethernet Patch Panels Explained: Punch

Network Stability Requirements: For networks that must operate continuously with minimal change, punch down Ethernet patch panels offer very



How To Terminate Cat6A Patch Panel

Terminating a Cat6a patch panel is a process that involves the installation of the patch panel on a wall, rack, or enclosure, and then attaching Cat6a cables to it to ensure that network

Contact Us

For datasheets, pricing, or custom high-speed optical interconnect solutions, please visit:
<https://www.syropy.com.pl>